



Chipsmall Limited consists of a professional team with an average of over 10 year of expertise in the distribution of electronic components. Based in Hongkong, we have already established firm and mutual-benefit business relationships with customers from,Europe,America and south Asia,supplying obsolete and hard-to-find components to meet their specific needs.

With the principle of “Quality Parts,Customers Priority,Honest Operation,and Considerate Service”,our business mainly focus on the distribution of electronic components. Line cards we deal with include Microchip,ALPS,ROHM,Xilinx,Pulse,ON,Everlight and Freescale. Main products comprise IC,Modules,Potentiometer,IC Socket,Relay,Connector.Our parts cover such applications as commercial,industrial, and automotives areas.

We are looking forward to setting up business relationship with you and hope to provide you with the best service and solution. Let us make a better world for our industry!



## Contact us

Tel: +86-755-8981 8866 Fax: +86-755-8427 6832

Email & Skype: info@chipsmall.com Web: www.chipsmall.com

Address: A1208, Overseas Decoration Building, #122 Zhenhua RD., Futian, Shenzhen, China



# COMPONENTS / ACCESSORIES

## SIDE PANELS AND FLANGES



### Flange, 482.6 mm (19")



**For Ripac EASY**  
Integrated mounting holes for installation of handles

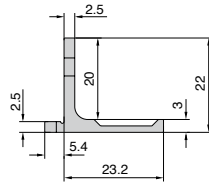
**Material:**  
Extruded aluminum profiles

**Surface finish:**  
Anodized

U	Packs of	Order No.
3	2	<b>3634.745</b>
6	2	<b>3634.750</b>

#### + Accessories:

Handles for subracks,  
see page 104



### Handles



#### For subracks and component shelves

For fitting on the subrack flange with handle holes and on all component shelves.

**Material:**  
Die-cast zinc

**Surface finish:**  
Spray-finished, silver-grey

**Supply includes:**  
Assembly parts.

For	Packs of	Order No.
Subracks 3 U and 4 U	2	<b>3636.010</b>
Component shelves		
Subracks 6 U and 7 U	2	<b>3666.010</b>

### Trim section, rear



To fit all Ripac Vario, Ripac Vario EMC, Ripac Compact and Ripac Vario Mobile. Ensures 84 HP fit at the rear of the subrack. With integral channel to accommodate EMC gaskets.

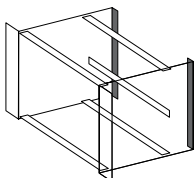
**Material:**  
Extruded aluminum section

**Surface finish:**  
Clear-chromated

U	Order No.	
	Packs of 1	Packs of 2
2	<b>3684.633</b>	–
3	<b>3684.634</b>	<b>3685.276</b>
4	<b>3684.635</b>	–
6	<b>3684.636</b>	<b>3685.277</b>
7	<b>3684.637</b>	–
9	<b>3684.638</b>	–
10	<b>3684.639</b>	–
11	<b>3684.640</b>	–

#### + Accessories:

EMC gaskets, vertical,  
see page 116



Ripac Vario

