



Chipsmall Limited consists of a professional team with an average of over 10 year of expertise in the distribution of electronic components. Based in Hongkong, we have already established firm and mutual-benefit business relationships with customers from,Europe,America and south Asia,supplying obsolete and hard-to-find components to meet their specific needs.

With the principle of “Quality Parts,Customers Priority,Honest Operation,and Considerate Service”,our business mainly focus on the distribution of electronic components. Line cards we deal with include Microchip,ALPS,ROHM,Xilinx,Pulse,ON,Everlight and Freescale. Main products comprise IC,Modules,Potentiometer,IC Socket,Relay,Connector.Our parts cover such applications as commercial,industrial, and automotives areas.

We are looking forward to setting up business relationship with you and hope to provide you with the best service and solution. Let us make a better world for our industry!



Contact us

Tel: +86-755-8981 8866 Fax: +86-755-8427 6832

Email & Skype: info@chipsmall.com Web: www.chipsmall.com

Address: A1208, Overseas Decoration Building, #122 Zhenhua RD., Futian, Shenzhen, China



LOC	DIST	REV	DATE	APP
6	14			

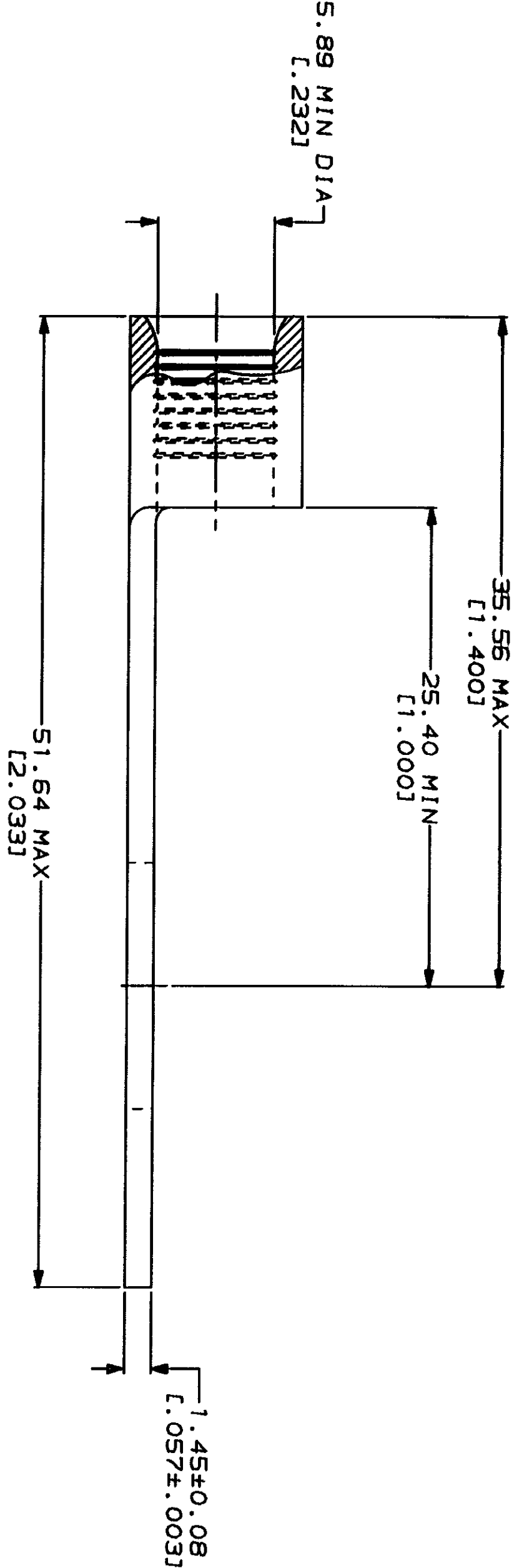
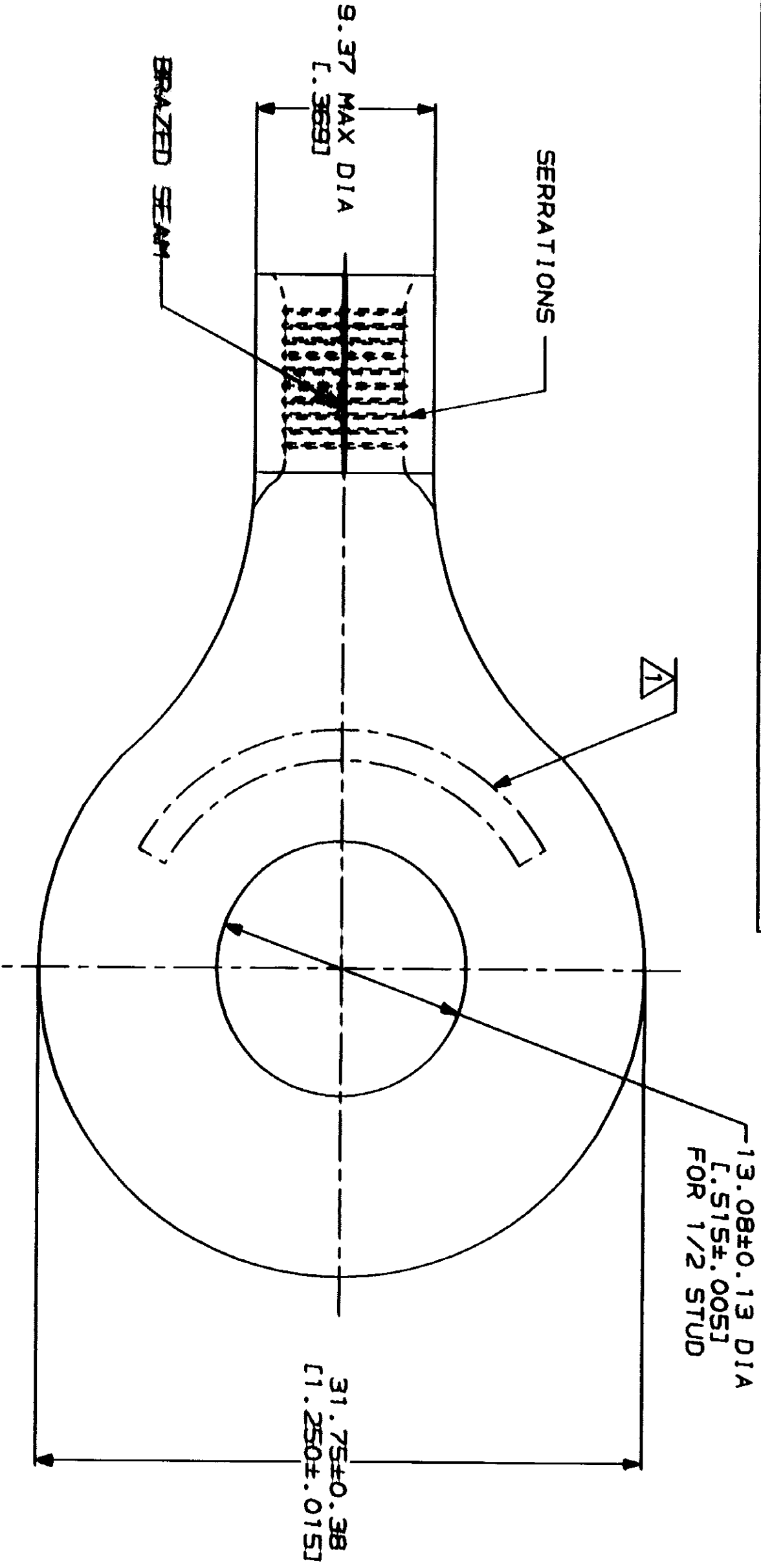
ZONE	CD	DESCRIPTION	DATE	APP
E		REVISED PER 0720-0220-93	4/19/94	gdp

METRIC

DIMENSIONS LISTED IN mm [INCHES]

WIRE RANGE	E13288 Listed
6 AWG SOLID OR STRANDED	6 AWG STRANDED
6 AWG SOLID OR STRANDED	NOT APPLICABLE

△ STAMP AMP SIZE APPROX AS SHOWN



AMP INCORPORATED
CUSTOMER SERVICE SYSTEMS

FOR ADDITIONAL
PRODUCT INFORMATION OR
COPIES OF DRAWINGS
AND TECHNICAL DOCUMENTS

FOR APPLICATION
TOOLING INFORMATION

FOR ORDER ENTRY

MAX RECOMMENDED OPERATING
TEMPERATURE:
170°C MAX

VOLTAGE RATING:
NOT APPLICABLE

WIRE CROSS SECTIONAL AREA RANGE:
10.5-16.8mm² [20,800-33,100] CIR MILS
SOLID OR STRANDED

FINISH
TIN PLATE
0.00254 [0.00100] MIN
THK PER MIL-T-10727

DO NOT SCALE PRINT.
UNLESS SPECIFIED
DIMENSIONS ARE IN MILLIMETERS
DIMENSIONS IN INCHES
ARE SHOWN IN PARENTHESES

DR 3-24-93
TA-SHOWMAN
DATE 3-24-93
DRAWN BY

APPROVED BY
DATE 3-24-93
JL MCKLEY
PRODUCT SPEC

APPLICATION SPEC

AMP
AMP Incorporated
Harrisburg, PA 17105-3608

TERMINAL, RING TONGUE,
SOLISTRAND™

SIZE
G
CAGE CODE
00779
DRAWING NO
C-36808

QTY
500
LOOSE PIECE, BOX
36808-1

CUSTOMER DRAWING