



Chipsmall Limited consists of a professional team with an average of over 10 year of expertise in the distribution of electronic components. Based in Hongkong, we have already established firm and mutual-benefit business relationships with customers from,Europe,America and south Asia,supplying obsolete and hard-to-find components to meet their specific needs.

With the principle of “Quality Parts,Customers Priority,Honest Operation,and Considerate Service”,our business mainly focus on the distribution of electronic components. Line cards we deal with include Microchip,ALPS,ROHM,Xilinx,Pulse,ON,Everlight and Freescale. Main products comprise IC,Modules,Potentiometer,IC Socket,Relay,Connector.Our parts cover such applications as commercial,industrial, and automotives areas.

We are looking forward to setting up business relationship with you and hope to provide you with the best service and solution. Let us make a better world for our industry!



## Contact us

Tel: +86-755-8981 8866 Fax: +86-755-8427 6832

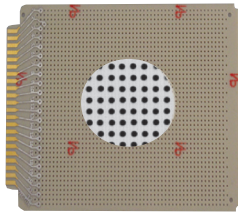
Email & Skype: info@chipsmall.com Web: www.chipsmall.com

Address: A1208, Overseas Decoration Building, #122 Zhenhua RD., Futian, Shenzhen, China

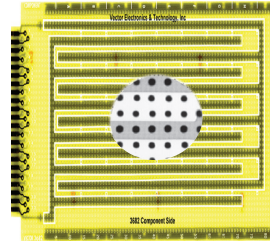




## 44 CONTACTS

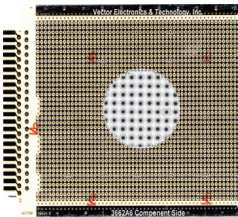


**3662 4.50" H X 6.50" L x .062" TH**  
**3662-2 4.5" H X 9.6" L X .062" TH**  
**3662-5 4.5" H X 4.5" L X .062" TH**  
 0.100" grid Gold-plated edge contacts only. 22 numbered edge contacts on front side; 22 including grounding contact on reverse side. Bare prototype area board.  
 .042" diameter holes. 44 gold-plated contacts (22 each side) on .156" centers.  
 16-Pin DIP= 50  
 Material: CEM-1  
 WW Terminals: T44, T46, T49, T68  
 Solder Connector: R644  
 WW Connector: R644-3C or R644-3F  
 WW Socket Pin: R32  
 Extender: 3690  
 Rec. Card Cage: CCK13

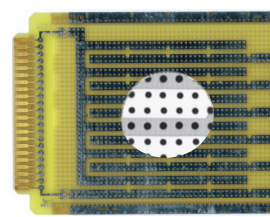


**3682-2 4.50" H X 6.5" L X .062" TH**  
**3682 4.5" X 9.6" L X 0.062" TH**  
 0.100" grid. Gold-plated edge contacts with Interleaved bus pattern on wiring side only. Bus outline is traced on component side to facilitate device placement. Unclad test point area at top of board.  
 .042" diameter holes. 44 gold-plated contacts (22each side) on .156" centers.  
 16-pin DIP Capacity: 3682-2= 24 3682=48  
 WW Terminals: T44, T46, T49, T68  
 Socket pin: R32 Solder Connector: R644  
 WW Connector: R644-3C or R644-3F  
 Extender: 3690  
 Card Cage: CCK 13; CCK14  
 Material: FR-4

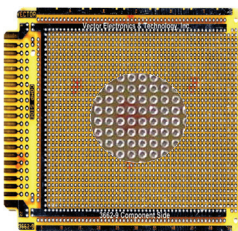
Plugbord



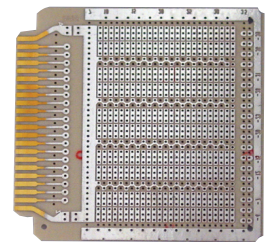
**3662A6 4.50" H X 6.5" L X .062" TH**  
 0.100" grid. Gold-plated edge contacts with overall ground plane on one side with 0.085" diameter clearance around holes, no pads or ground plane on component side. Row and column legends on both sides. Bare prototype area board.  
 .042" diameter holes. 44 gold-plated contacts (22each side) on .156" centers.  
 16-pin DIP Capacity = 90  
 WW Terminals: T44, T46, T49, T68.  
 Socket pin: R32 Solder Connector: R644  
 WW Connector: R644-3C or R644-3F  
 Extender: 3690  
 Card Cage: CCK 13  
 Material: CEM-1



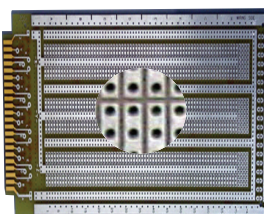
**3682-4 4.50" H X 6.5" L X .062" TH**  
 0.100" grid. Gold-plated edge contacts with Interleaved bus pattern on wiring side and overall ground plane on component side. Unclad test point area at top of board.  
 .042" diameter holes. 44 gold-plated contacts (22each side) on .156" centers.  
 16-pin DIP Capacity: = 24  
 WW Terminals: T44, T46, T49, T68  
 Socket pin: R32 Solder Connector: R644  
 WW Connector: R644-3C or R644-3F  
 Extender: 3690  
 Card Cage: CCK 13; CCK14  
 Material: FR-4



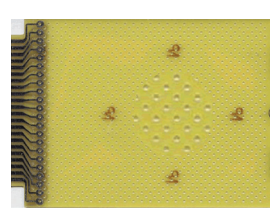
**3662-9 4.50" H X 6.5" L X .062" TH**  
 0.100" grid. Gold-plated edge contacts with Pad-Per-Hole pattern; 0.085" diameter pads both sides.  
 Voltage plane, ground plane, row and column legends on both sides.  
 .042" diameter holes. 44 gold-plated contacts (22each side) on .156" centers.  
 16-pin DIP Capacity = 48  
 WW Terminals: T44, T46, T49, T68  
 Socket pin: R32  
 Solder Connector: R644  
 WW Connector: R644-3C or R644-3F  
 Extender: 3690  
 Card Cage: CCK 13  
 Material: FR-4



**4112-5 4.50" H x 4.50" L x .062" TH**  
**4112-4 4.50" H x 6.50" L x .062" TH**  
**4112 4.50" H x 9.60" L x .062" TH**  
 0.100" grid Zig-Zag Buses with 3-hole solder pad pattern on wiring side, overall Ground Plane pattern on component side (0.085" dia. clearance around holes) 3-hole pads are 0.280" x 0.080".  
 Row and column legends.  
 .042" holes not plated thru. 44 gold-plated contacts (22 each side) on .156" centers.  
 16-pin DIP Capacity: 4112-5 = 8 4112-4 = 25 4112 = 40  
 WW Terminals: T44, T46, T49, T68  
 Socket pin: R32  
 Solder Connector: R644  
 Extender: 3690  
 Card Cage: CCK12, CCK 13, CCK 14  
 Material: FR-4



**3677 4.50" H x 9.60" L x .062" TH**  
**3677-2 4.50" H x 6.50" L x .062" TH**  
 0.100" grid 3-Hole Solder Pad (0.28" x 0.080") one side only. Voltage plane, ground plane, row and column legends on both sides.  
 .042" holes not plated thru  
 22/44 contacts gold plated @.156" centers  
 16-Pin DIP: 3677 = 21 3677-2 = 12  
 Material: FR-4  
 WW Terminals: T44, T46, T49, T68  
 Solder Connector: R644  
 WW Socket Pin: R32  
 Extender: 3690  
 Rec. Card Cage: CCK14  
 WW Connector: R644-3



**838WE 4.50" H x 6.50" L x .062" TH**  
 Alternating intersections of 0.100" designed for mounting transistors. Solder plated edge contacts only, 22 numbered edge contacts on front side; 22 including grounding contact on reverse side. Bare prototype area for unrestricted component placement.  
 .062" diameter holes, 44 solder plated edge card connector contacts on .156" centers  
 Material: FR-4 Epoxy Glass  
 Push-In Terminal: T28  
 Solder Connector: R644  
 Extender: 3690, 3690-6  
 WW Connector: R644-3C

## PLUGBORD™ "G" PATTERN