



Chipsmall Limited consists of a professional team with an average of over 10 year of expertise in the distribution of electronic components. Based in Hongkong, we have already established firm and mutual-benefit business relationships with customers from,Europe,America and south Asia,supplying obsolete and hard-to-find components to meet their specific needs.

With the principle of “Quality Parts,Customers Priority,Honest Operation,and Considerate Service”,our business mainly focus on the distribution of electronic components. Line cards we deal with include Microchip,ALPS,ROHM,Xilinx,Pulse,ON,Everlight and Freescale. Main products comprise IC,Modules,Potentiometer,IC Socket,Relay,Connector.Our parts cover such applications as commercial,industrial, and automotives areas.

We are looking forward to setting up business relationship with you and hope to provide you with the best service and solution. Let us make a better world for our industry!



Contact us

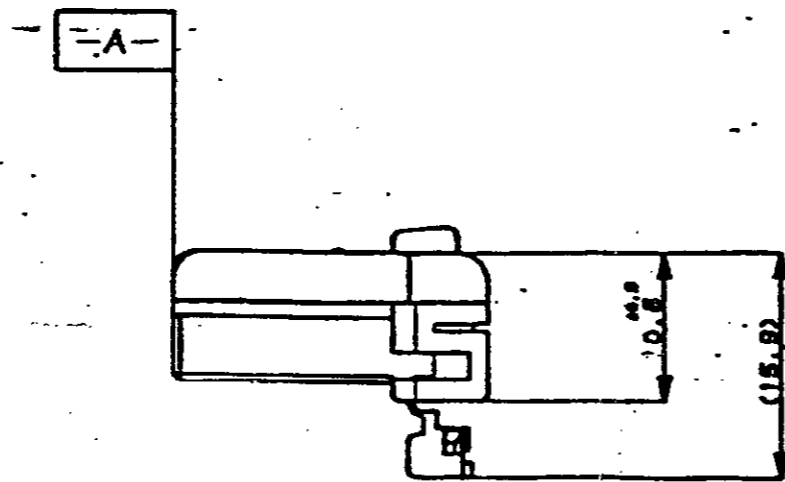
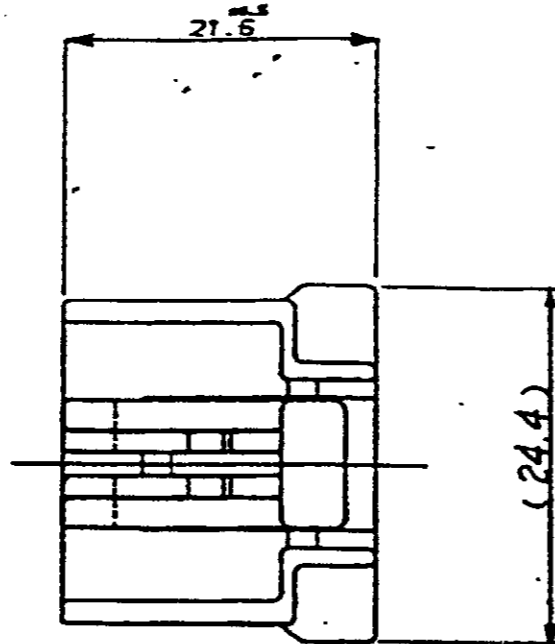
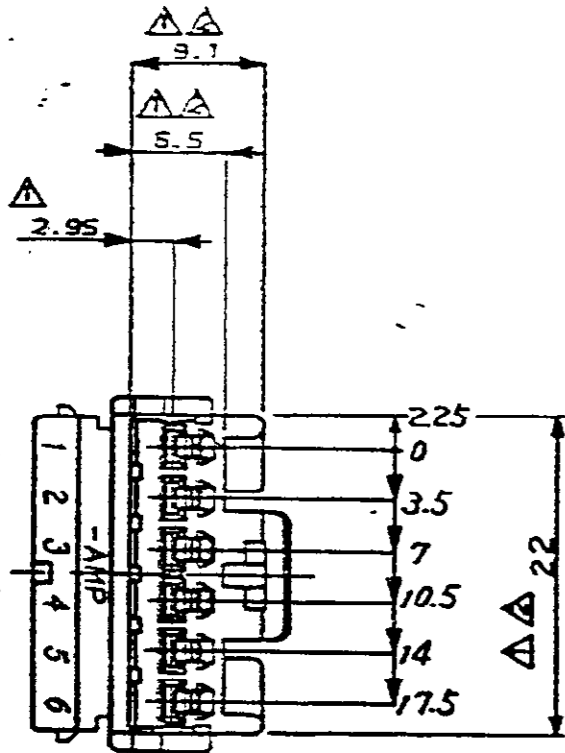
Tel: +86-755-8981 8866 Fax: +86-755-8427 6832

Email & Skype: info@chipsmall.com Web: www.chipsmall.com

Address: A1208, Overseas Decoration Building, #122 Zhenhua RD., Futian, Shenzhen, China



P	LTR	DESCRIPTION	DATE	DWN	APVD
0		RELEASED (RD98-146)	01 JUN '98	HSK	CS



UNCONTROLLED



NOTES

1. TO BE MEASURED BETWEEN [A] AND 2mm.
2. TO BE MATED WITH PLUG HSG SMOOTHLY.
3. APPLIED CONTACT P/N : 173630 & 173631
4. APPLIED CAP HSG P/N : 368504

NATURAL	TRIBIT 1503(S)K	0-368502-1
COLOR	MATERIAL	PART NO.

<small>THIS DRAWING IS A CONTROLLED DOCUMENT FOR AMP INCORPORATED. IT IS SUBJECT TO CHANGE AND THE CONTROLLING ENGINEERING ORGANIZATION SHOULD BE CONTACTED FOR THE LATEST REVISION.</small>		DWN	AMP KOREA	
DIMENSIONS: MM		CHK	AMP KOREA	
TOLERANCES UNLESS OTHERWISE SPECIFIED: 0 <XX<10 ± 0.2 10<XX<30 ± 0.25 30<XX ± 0.3 ANGLES ± 3°		APVD	AMP KOREA	
3rd ANGLE PROJECTION		PRODUCT SPEC	.070 MLC 6P PLUG HSG.	
MATERIAL: SEE TABLE		APPLICATION SPEC	SIZE	DRAWING NO
FINISH		WEIGHT	A3	C- 368502
			CAGE CODE	SHEET 1 OF 1
			00779	REV 0
			SCALE 2/1	