



Chipsmall Limited consists of a professional team with an average of over 10 year of expertise in the distribution of electronic components. Based in Hongkong, we have already established firm and mutual-benefit business relationships with customers from,Europe,America and south Asia,supplying obsolete and hard-to-find components to meet their specific needs.

With the principle of “Quality Parts,Customers Priority,Honest Operation,and Considerate Service”,our business mainly focus on the distribution of electronic components. Line cards we deal with include Microchip,ALPS,ROHM,Xilinx,Pulse,ON,Everlight and Freescale. Main products comprise IC,Modules,Potentiometer,IC Socket,Relay,Connector.Our parts cover such applications as commercial,industrial, and automotives areas.

We are looking forward to setting up business relationship with you and hope to provide you with the best service and solution. Let us make a better world for our industry!



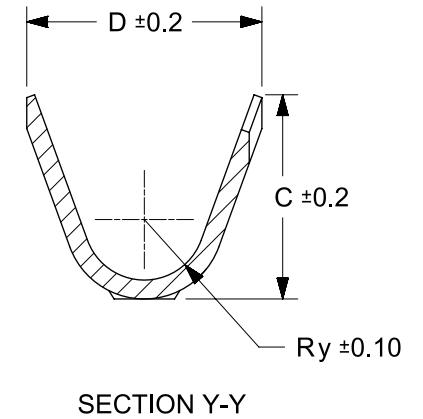
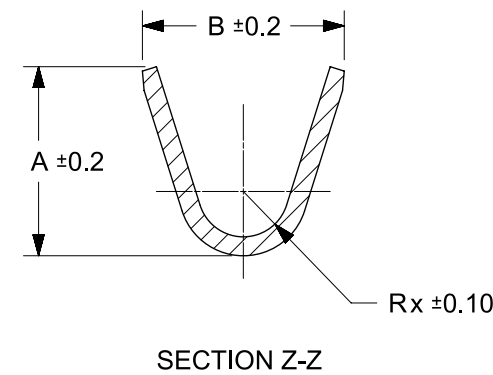
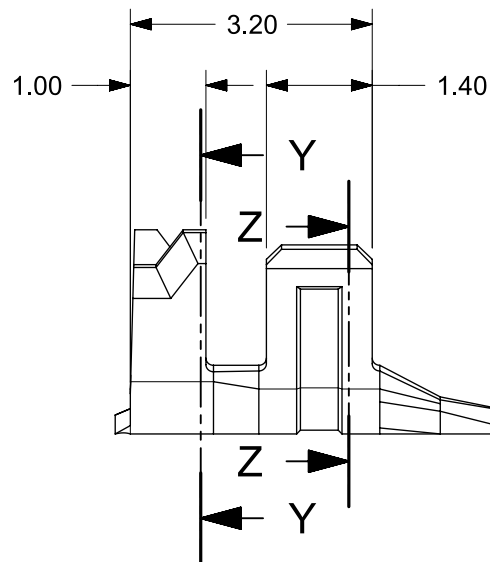
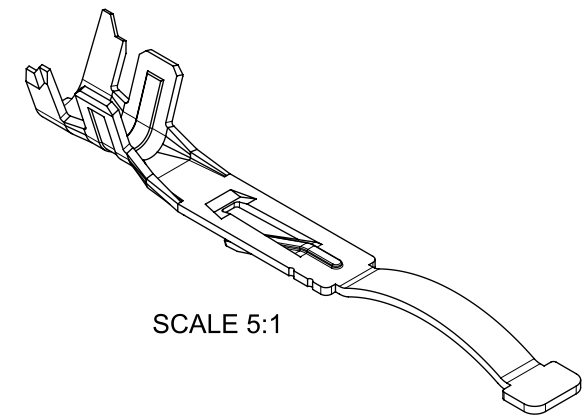
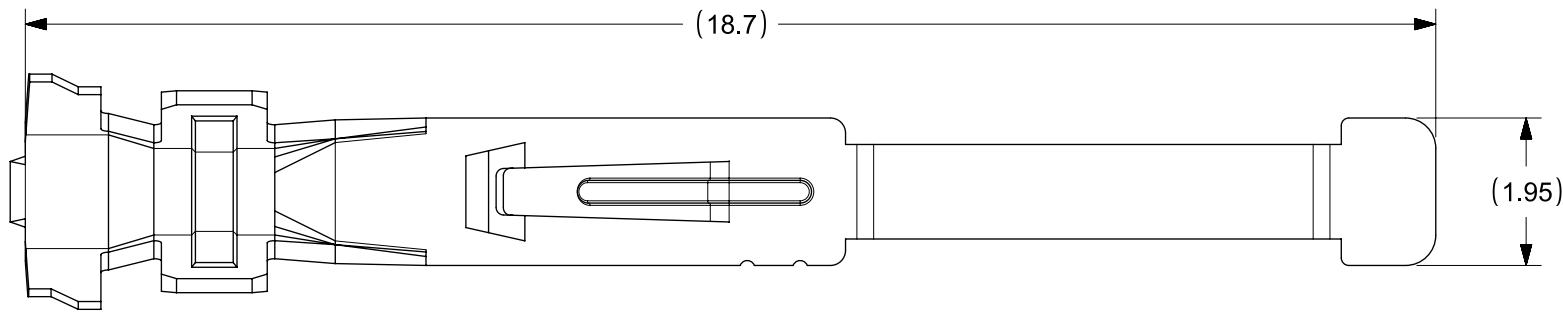
Contact us

Tel: +86-755-8981 8866 Fax: +86-755-8427 6832

Email & Skype: info@chipsmall.com Web: www.chipsmall.com

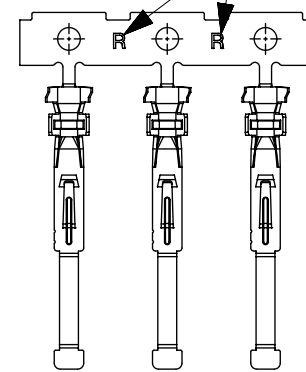
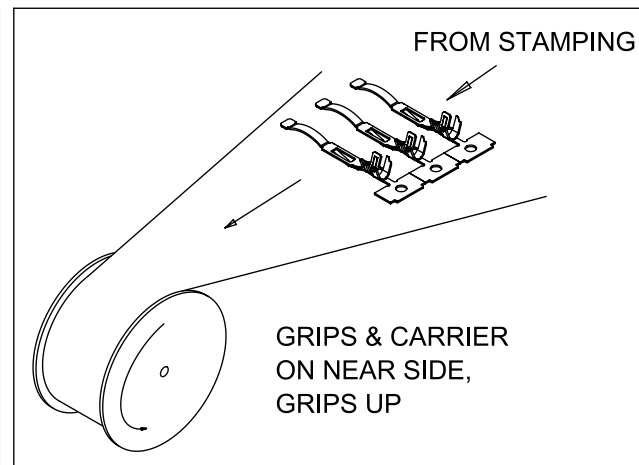
Address: A1208, Overseas Decoration Building, #122 Zhenhua RD., Futian, Shenzhen, China





(0.25)
SHEET THICKNESS

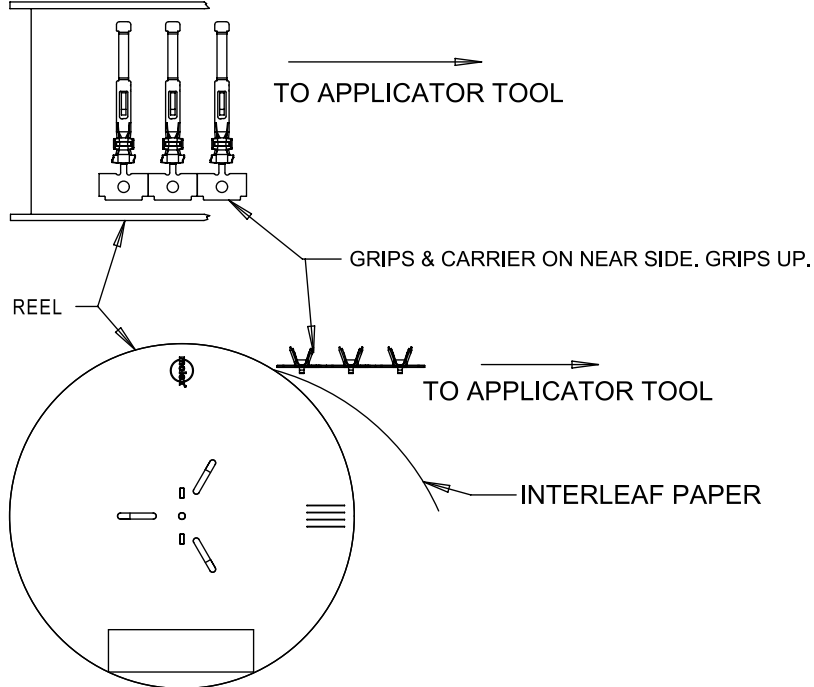
SEE NOTE 8



NOTES:

1. MATERIAL: HIGH COPPER
2. PLATING: TIN OVER NICKEL OVERALL
3. PRODUCT SPECIFICATION: PS-36876-001
4. PACKAGING SPECIFICATION: PK-36876-001
5. MATES WITH: IDENTICAL TERMINAL (SERIES 36876)
6. USED WITH: GENDERLESS CRIMP HOUSING SERIES 36877
7. COSMETIC SPECIFICATION: PS-45499-002 CLASS B
8. "R" MARKING ON CARRIER STRIP IS FOR INTERNAL REFERENCE ONLY.

DIRECTION D
LEFT PAYOFF WITH
PAPER INTERLEAF
(LEFT TO RIGHT)



PART NO.	AWG	A	B	Rx	C	D	Ry
368760001	20-22	2.50	2.70	0.60	2.70	3.10	0.80
368760002	24-26	2.35	2.70	0.25	2.20	2.40	0.70

RELEASE STATUS	P1	RELEASE DATE	27.05.2016	03:55:16
----------------	----	--------------	------------	----------

THIS DRAWING CONTAINS INFORMATION THAT IS PROPRIETARY TO MOLEX ELECTRONIC TECHNOLOGIES, LLC AND SHOULD NOT BE USED WITHOUT WRITTEN PERMISSION																			
EC NO: 105248 DRWN: VLM CHK'D: NCSR APPR: KPRASAD	2016/02/25 2016/05/25 2016/05/26	GENERAL TOLERANCES (UNLESS SPECIFIED)		DIMENSION UNITS		SCALE		<div>molex®</div>											
				MM		10:1													
		ANGULAR TOL ± 0.5 °		DRWN BY		DATE		<div>GENDERLESS TERMINAL 20-26 AWG DITTO INTERCONNECTS</div>											
				NCSR		2013/10/28													
		4 PLACES ±		CHK'D BY		DATE								<div>PRODUCT CUSTOMER DRAWING</div>					
		3 PLACES ±		APPR BY		DATE		SERIES		MATERIAL NUMBER		CUSTOMER							
				2 PLACES ± 0.13		KPRASAD		2013/10/29		36876		SEE TABLE		GENERAL MARKET					
		1 PLACE ± 0.25		0 PLACES ±		DRAWING SIZE		THIRD ANGLE PROJECTION		DOCUMENT NUMBER		DOC TYPE		DOC PART		SHEET NUMBER			
				DRAFT WHERE APPLICABLE MUST REMAIN WITHIN DIMENSIONS		A3				SD-36876-001		PSD		000		1 OF 1			
B	REV																		