



Chipsmall Limited consists of a professional team with an average of over 10 year of expertise in the distribution of electronic components. Based in Hongkong, we have already established firm and mutual-benefit business relationships with customers from,Europe,America and south Asia,supplying obsolete and hard-to-find components to meet their specific needs.

With the principle of “Quality Parts,Customers Priority,Honest Operation,and Considerate Service”,our business mainly focus on the distribution of electronic components. Line cards we deal with include Microchip,ALPS,ROHM,Xilinx,Pulse,ON,Everlight and Freescale. Main products comprise IC,Modules,Potentiometer,IC Socket,Relay,Connector.Our parts cover such applications as commercial,industrial, and automotives areas.

We are looking forward to setting up business relationship with you and hope to provide you with the best service and solution. Let us make a better world for our industry!



## Contact us

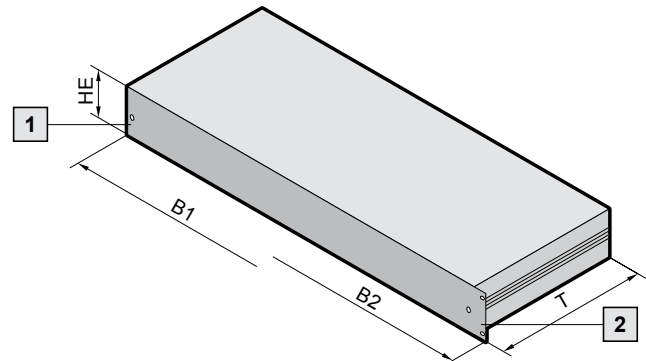
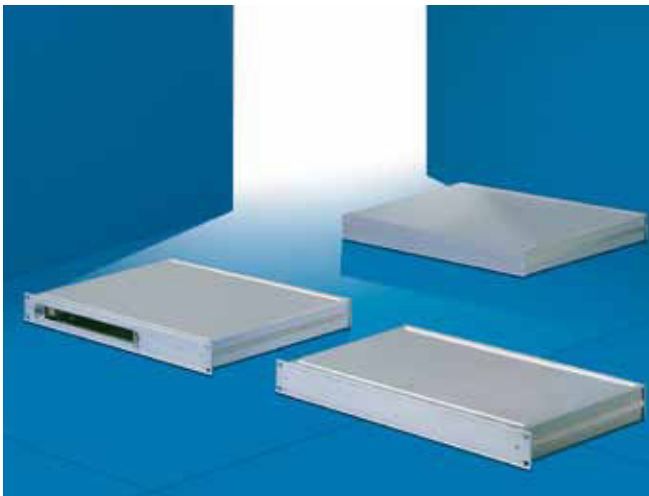
Tel: +86-755-8981 8866 Fax: +86-755-8427 6832

Email & Skype: info@chipsmall.com Web: www.chipsmall.com

Address: A1208, Overseas Decoration Building, #122 Zhenhua RD., Futian, Shenzhen, China



### RiBox system enclosure 1 U



B = Width  
T = Depth  
HE = U

#### Technical specifications:

System enclosures 1 U, 150, 200, 250, 300, 350 mm deep. Easy to assemble with just 4 screws. Optionally for use as an instrument case or 19" rack-mount enclosure. Front panel to hold an overlay to conceal the screws. Maximum interior space. Optional EMC upgrades with additional EMC gaskets.

Option of installing 1 VME or CPCI board horizontally.

#### Design:

System enclosure 1 U, to IEC 60 297-1. Optionally available for 19" rackmounting in the enclosure or as an instrument case version.

- 1** Equipped as an instrument case
- 2** Equipped as a rack-mount unit

#### Material/surface finish:

Side panels: Extruded aluminum section, untreated  
Base/cover trays: Aluminum, clear-chromated  
Front/rear panel: Extruded aluminum section, clear-chromated  
Mounting plate: Sheet steel

U	1	1	1	1	1	-	-
Width (B1) mm	447	447	447	447	447	-	-
Width (B2) mm	19" (482.6)	19" (482.6)	19" (482.6)	19" (482.6)	19" (482.6)	19" (482.6)	19" (482.6)
Depth (T) mm	150	200	250	300	350	250	350
Order No. instrument case	<b>3687.819</b>	<b>3687.820</b>	<b>3687.821</b>	<b>3687.822</b>	<b>3687.823</b>	-	-
Order No. rack case	<b>3687.814</b>	<b>3687.815</b>	<b>3687.816</b>	<b>3687.817</b>	<b>3687.818</b>	-	-
Order No. rack-mount including mounting kit for double Euroboards	-	-	-	-	-	<b>3684.072</b>	<b>3684.073</b>
<b>Supply includes</b>							
Side panel	2	2	2	2	2	2	2
Front panel	1	1	1	1	1	1	1
Rear panel	1	1	1	1	1	1	1
Base/cover tray	2	2	2	2	2	2	2
Mounting kit	-	-	-	-	-	1	1
<b>Accessories</b>							
EMC set	<b>3684.080</b>	<b>3684.080</b>	<b>3684.080</b>	<b>3684.080</b>	<b>3684.080</b>	<b>3684.080</b>	<b>3684.080</b>
Mounting plate	<b>3684.074</b>	<b>3684.075</b>	<b>3684.076</b>	<b>3684.077</b>	<b>3684.078</b>	-	-