



Chipsmall Limited consists of a professional team with an average of over 10 year of expertise in the distribution of electronic components. Based in Hongkong, we have already established firm and mutual-benefit business relationships with customers from,Europe,America and south Asia,supplying obsolete and hard-to-find components to meet their specific needs.

With the principle of “Quality Parts,Customers Priority,Honest Operation,and Considerate Service”,our business mainly focus on the distribution of electronic components. Line cards we deal with include Microchip,ALPS,ROHM,Xilinx,Pulse,ON,Everlight and Freescale. Main products comprise IC,Modules,Potentiometer,IC Socket,Relay,Connector.Our parts cover such applications as commercial,industrial, and automotives areas.

We are looking forward to setting up business relationship with you and hope to provide you with the best service and solution. Let us make a better world for our industry!



Contact us

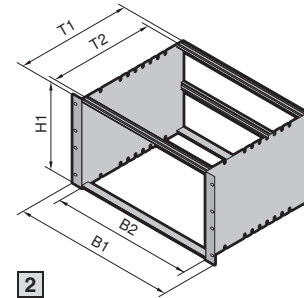
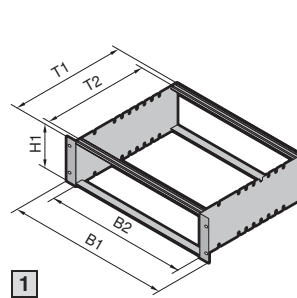
Tel: +86-755-8981 8866 Fax: +86-755-8427 6832

Email & Skype: info@chipsmall.com Web: www.chipsmall.com

Address: A1208, Overseas Decoration Building, #122 Zhenhua RD., Futian, Shenzhen, China



Ripac ECO 3 U, 6 U, sheet steel



B = Width
T = Depth

Material/surface finish:

Side panels:
1.5 mm sheet steel, zinc-plated
Flanges/horizontal rails:
Extruded aluminum section,
clear-chromated

Supply includes:

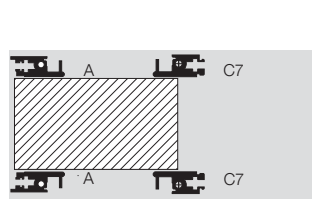
Side panels, flanges, horizontal rails, threaded inserts, assembly screws.

Tests:

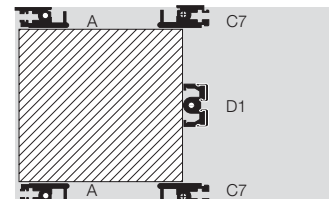
Shock and vibration tested to:
IEC 600-68-2-6 test Fc
IEC 600-68-2-27 test Ea

Standards:

Ripac subracks are based on the system dimensions of DIN 41 494 part 5 and IEC 60 297-3.



1 For backplane



2 For backplane

					Order No.		Page
					1	2	
					3	6	
U (H1)	B1 mm	B2 HP	Side panel (T1) mm	T2 mm	Max. PCB depth mm	For backplane	For backplane
482.6 (19")	84		175	150	160	3688.114	3688.116
			235	210	220	3688.115	3688.117

Accessories

Covers	125
Horizontal rails	100
Guide rails	119