



Chipsmall Limited consists of a professional team with an average of over 10 year of expertise in the distribution of electronic components. Based in Hongkong, we have already established firm and mutual-benefit business relationships with customers from,Europe,America and south Asia,supplying obsolete and hard-to-find components to meet their specific needs.

With the principle of “Quality Parts,Customers Priority,Honest Operation,and Considerate Service”,our business mainly focus on the distribution of electronic components. Line cards we deal with include Microchip,ALPS,ROHM,Xilinx,Pulse,ON,Everlight and Freescale. Main products comprise IC,Modules,Potentiometer,IC Socket,Relay,Connector.Our parts cover such applications as commercial,industrial, and automotives areas.

We are looking forward to setting up business relationship with you and hope to provide you with the best service and solution. Let us make a better world for our industry!



## Contact us

Tel: +86-755-8981 8866 Fax: +86-755-8427 6832

Email & Skype: info@chipsmall.com Web: www.chipsmall.com

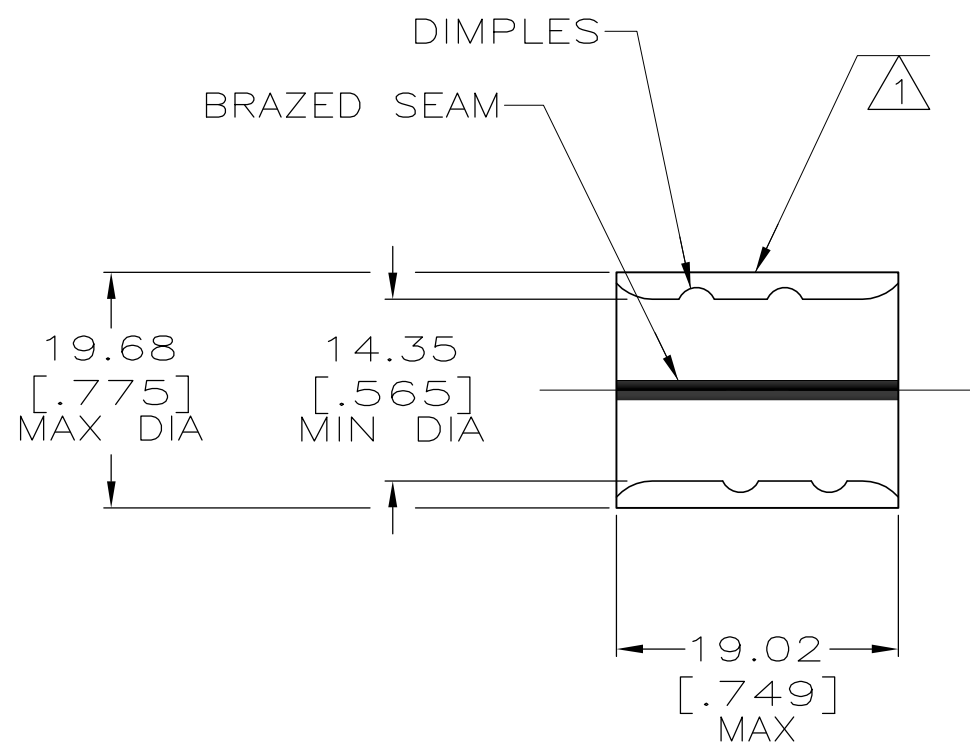
Address: A1208, Overseas Decoration Building, #122 Zhenhua RD., Futian, Shenzhen, China



THIS DRAWING IS UNPUBLISHED. RELEASED FOR PUBLICATION  
 © COPYRIGHT BY TYCO ELECTRONICS CORPORATION. ALL RIGHTS RESERVED.

LOC	DIST	REVISIONS					
G	14	P	LTR	DESCRIPTION	DATE	DWN	APVD
			E1	REV PER ECR 08-010969	01MAY08	JR	RL

<b>AMP</b> WIRE RANGE	Listed FILE E13288	LR7189 Certified
3/0 AWG SOLID OR STRANDED	3/0 AWG STRANDED	3/0 AWG SOLID OR STRANDED



- 1 STAMP AMP 3/0W\* 150 LOCATE APPROX AS SHOWN
- 2 MATERIAL THK: 2.31 ±0.08 [.091 ±.003]
- 3 TIN PL 0.00254 [.000100] MIN THK PER ASTM B545.
- 4 CLEANED, UNPLATED
- 5 P/N 1-36909-1 IS NOT UL OR CSA LISTED.
- 6 STAMP FOR MANUFACTURING LOCATION OR CODE PERMISSIBLE.
- 7 PREPRODUCTION - FASR REQ.
- 8 NOT UL OR CSA LISTED
- 9 0.00254 [.000100] MIN TIN-LEAD (60/40) PLATE PER SAE-AMS-P-81728
- 10 PRELIMINARY - NOT FOR PRODUCTION

	-	LOOSE PIECE		36909-2
	-	LOOSE PIECE		36909-1
	-	LOOSE PIECE		36909
FINISH	QTY	PACKAGE TYPE	PART NO	

**AMP INCORPORATED**  
**CUSTOMER SERVICE SYSTEMS**

FOR ADDITIONAL PRODUCT INFORMATION OR COPIES OF DRAWINGS AND TECHNICAL DOCUMENTS  
 PRODUCT INFORMATION CENTER  
 1-800-522-6752

FOR APPLICATION TOOLING INFORMATION  
 TOOLING ASSISTANCE CENTER  
 1-800-722-1111

FOR ORDER ENTRY  
 1-800-526-5142

MAX RECOMMENDED OPERATING TEMPERATURE:  
 170° C

VOLTAGE RATING:  
 N/A

CIRCULAR MIL AREA:  
 150,500-190,000  
 SOLID OR STRANDED

THIS DRAWING IS A CONTROLLED DOCUMENT.

DIMENSIONS: INCHES

TOLERANCES UNLESS OTHERWISE SPECIFIED:

0 PLC	± -
1 PLC	± -
2 PLC	± 0.20[.008]
3 PLC	± -
4 PLC	± -
ANGLES	± -

MATERIAL: COPPER ASTM B-152 ANNEALED

FINISH: SEE TABLE

DWN JR RUTH 14FEB01		Tyco Electronics Corporation Harrisburg, Pa 17105-3608		
CHK MS FEHER 14FEB01		NAME SPLICE, PARALLEL, SOLISTRAND		
APVD M SPICER 14FEB01		SIZE A3	CAGE CODE 00779	DRAWING NO G-36909
PRODUCT SPEC -	SCALE: 2:1 SHEET 1 OF 1 REV E1			
APPLICATION SPEC -	CUSTOMER DRAWING			
WEIGHT -				