



Chipsmall Limited consists of a professional team with an average of over 10 year of expertise in the distribution of electronic components. Based in Hongkong, we have already established firm and mutual-benefit business relationships with customers from,Europe,America and south Asia,supplying obsolete and hard-to-find components to meet their specific needs.

With the principle of “Quality Parts,Customers Priority,Honest Operation,and Considerate Service”,our business mainly focus on the distribution of electronic components. Line cards we deal with include Microchip,ALPS,ROHM,Xilinx,Pulse,ON,Everlight and Freescale. Main products comprise IC,Modules,Potentiometer,IC Socket,Relay,Connector.Our parts cover such applications as commercial,industrial, and automotives areas.

We are looking forward to setting up business relationship with you and hope to provide you with the best service and solution. Let us make a better world for our industry!



Contact us

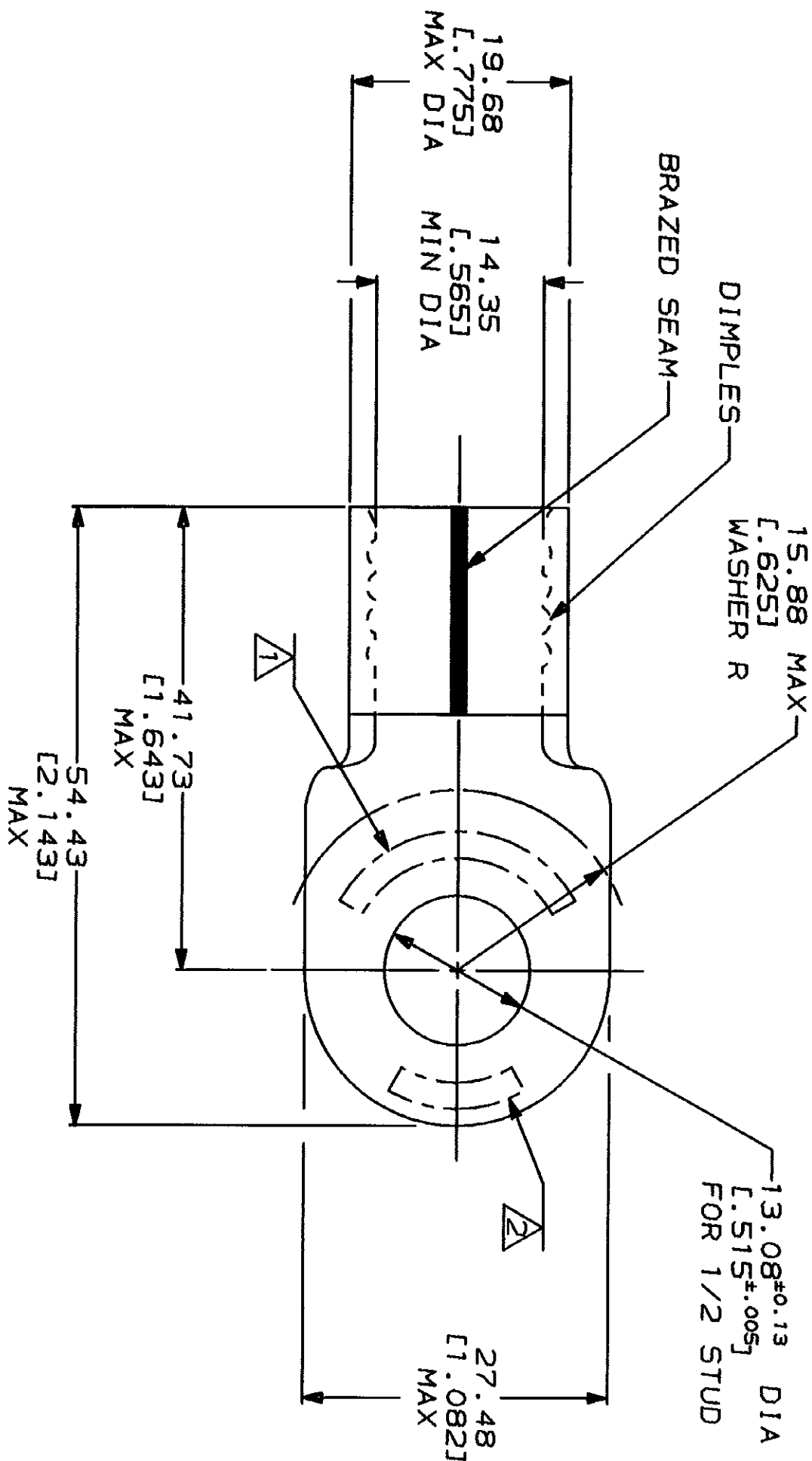
Tel: +86-755-8981 8866 Fax: +86-755-8427 6832

Email & Skype: info@chipsmall.com Web: www.chipsmall.com

Address: A1208, Overseas Decoration Building, #122 Zhenhua RD., Futian, Shenzhen, China



DRAWING MADE IN THIRD ANGLE PROJECTION			
THIS DRAWING IS UNPUBLISHED.			
RELEASED FOR PUBLICATION			
BY AMP INCORPORATED. ALL INTERNATIONAL RIGHTS RESERVED.			
AMP PART NO	MATERIAL	PKG TYPE	QTY
8-36929-3	M/F 8-36929-0	BOX	25
8-36929-5	M/F 8-36929-0	SPL	5



METRIC
DIMENSIONS LISTED IN mm [INCHES]

AMP WIRE RANGE	UL E13288 Listed
3/0 AWG SOLID OR STRANDED	3/0 AWG SOLID OR STRANDED
LR7189 Certified	MILITARY P/N AND CLASS
3/0 AWG SOLID OR STRANDED	NOT APPLICABLE

- △ STAMP AMP 3/0W* APPROX AS SHOWN
- △ STAMP 150 APPROX AS SHOWN
- 3 TONGUE MATERIAL THK: 2.31±0.08 [0.091 ±.003]

AMP INCORPORATED
CUSTOMER SERVICE SYSTEMS

FOR ADDITIONAL
PRODUCT INFORMATION OR
COPIES OF DRAWINGS
AND TECHNICAL DOCUMENTS

FOR APPLICATION
TOOLING INFORMATION

FOR ORDER ENTRY

PRODUCT INFORMATION CENTER
1-800-522-6752

TOOLING ASSISTANCE CENTER
1-800-722-1111

1-800-526-5142

MAX RECOMMENDED OPERATING
TEMPERATURE:
170°C MAX

VOLTAGE RATING:
NOT APPLICABLE

CIRCULAR MIL AREA:
76.3-96.3mm² (150,000-190,000) CIR MILS
SOLID OR STRANDED

DO NOT SCALE PRINT.
UNLESS SPECIFIED
DIMENSIONS IN INCHES
TOLERANCES ON 1
2 PLC DEC ± 0.20(0.008)
3 PLC DEC ± .
ANGLES

MATERIAL
COPPER ASTM B-152
ANNEALED

FINISH
TIN PLATE
0.00254(0.000100) MIN
THK PER MIL-T-10727

DR 5/20/93 DK SCHRUM	CHK 1/27/94 RD HEIH	APPD 1/27/94 RE ROSER	APPD 1/27/94 JL HECKLEY
APPLICATION SPEC			
WEIGHT			

AMP
AMP Incorporated
Harrisburg, PA 17105-3508

TERMINAL, RING TONGUE,
SOLID STRAND™

SIZE
CAGE CODE
DRAWING NO

SCALE 2:1

00779

36929

36929
PART NO