



Chipsmall Limited consists of a professional team with an average of over 10 year of expertise in the distribution of electronic components. Based in Hongkong, we have already established firm and mutual-benefit business relationships with customers from,Europe,America and south Asia,supplying obsolete and hard-to-find components to meet their specific needs.

With the principle of “Quality Parts,Customers Priority,Honest Operation,and Considerate Service”,our business mainly focus on the distribution of electronic components. Line cards we deal with include Microchip,ALPS,ROHM,Xilinx,Pulse,ON,Everlight and Freescale. Main products comprise IC,Modules,Potentiometer,IC Socket,Relay,Connector.Our parts cover such applications as commercial,industrial, and automotives areas.

We are looking forward to setting up business relationship with you and hope to provide you with the best service and solution. Let us make a better world for our industry!



Contact us

Tel: +86-755-8981 8866 Fax: +86-755-8427 6832

Email & Skype: info@chipsmall.com Web: www.chipsmall.com

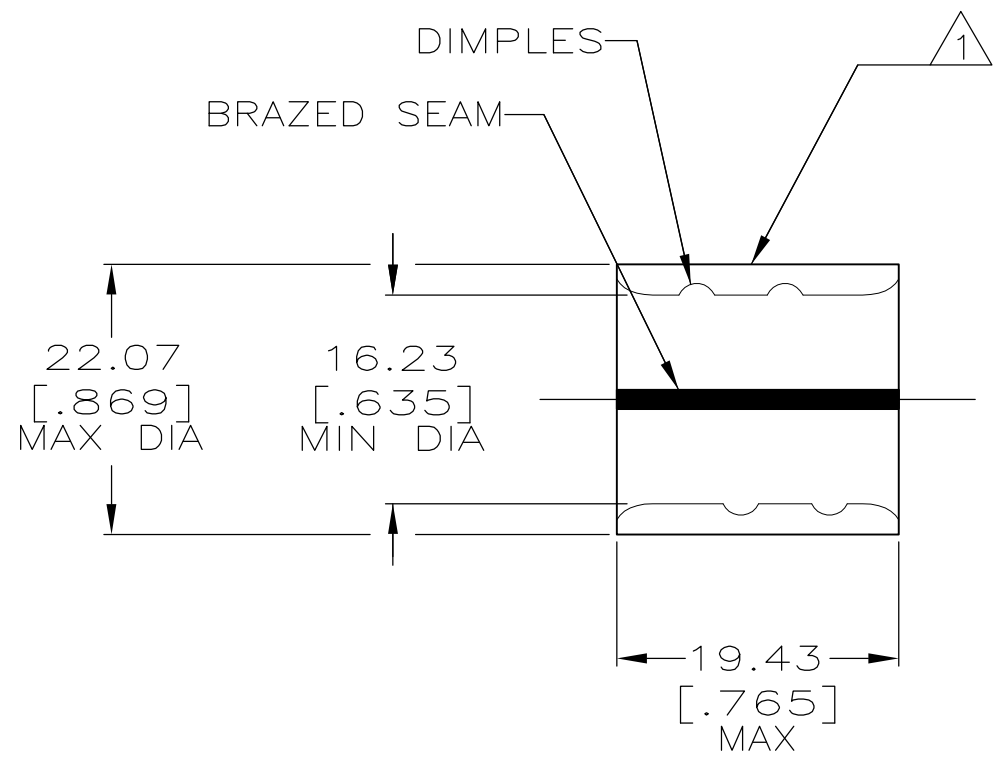
Address: A1208, Overseas Decoration Building, #122 Zhenhua RD., Futian, Shenzhen, China



THIS DRAWING IS UNPUBLISHED. RELEASED FOR PUBLICATION
 © COPYRIGHT - By - ALL RIGHTS RESERVED.

LOC	DIST	REVISIONS					
		P	LTR	DESCRIPTION	DATE	DWN	APVD
G	14		F2	REVISED PER ECO-12-001377	23JAN12	KH	DR

AMP WIRE RANGE	Listed FILE E13288	LR7189 Certified
4/0 AWG SOLID OR STRANDED	4/0 AWG SOLID OR STRANDED	4/0 AWG SOLID OR STRANDED



- 1 STAMP AMP 4/0W* 200
LOCATE APPROX AS SHOWN
- 2 MATERIAL THK: 2.59^{±0.08} [.102^{±.003}]
- 3 TIN PL 0.00254 [.000100] MIN THK
PER ASTM B545.
- 4 CLEANED, UNPLATED
- 5 P/N 1-36948-1 IS NOT UL OR CSA LISTED.
- 6 STAMP FOR MANUFACTURING LOCATION OR
CODE PERMISSIBLE.
- 7 PREPRODUCTION - FASR REQ
- 8 NOT UL OR CSA LISTED
- 9 0.00254 [.000100] MIN TIN-LEAD (60-40)
PLATE PER SAE-AMS-P-81728
- 10 PRELIMINARY - NOT FOR PRODUCTION

FINISH	QTY	PACKAGING TYPE	PART NO.
9	-	LOOSE PIECE	8 10 36951-2
4	-	LOOSE PIECE	5 7 1-36951-1
3	-	LOOSE PIECE	36951

AMP INCORPORATED
CUSTOMER SERVICE SYSTEMS

FOR ADDITIONAL PRODUCT INFORMATION OR COPIES OF DRAWINGS AND TECHNICAL DOCUMENTS
 PRODUCT INFORMATION CENTER
 1-800-522-6752

FOR APPLICATION TOOLING INFORMATION
 TOOLING ASSISTANCE CENTER
 1-800-722-1111

FOR ORDER ENTRY
 1-800-526-5142

MAX RECOMMENDED OPERATING TEMPERATURE:
 170°C

VOLTAGE RATING:
 N/A

CIRCULAR MIL AREA:
 96.3-117.0mm² [190,000-231,100]
 SOLID OR STRANDED

THIS DRAWING IS A CONTROLLED DOCUMENT.

DIMENSIONS:
 mm [INCHES]

TOLERANCES UNLESS OTHERWISE SPECIFIED:

0 PLC	± -
1 PLC	± -
2 PLC	± 0.20[.008]
3 PLC	± -
4 PLC	± -
ANGLES	± -

MATERIAL: COPPER PER ASTM B-152
 FINISH: SEE TABLE

DWN DK SCHRUM 5/24/93
 CHK RD HEIM 1/27/94
 APVD JL MECKLEY 1/27/94

STE TE Connectivity

NAME: SPLICE, PARALLEL, SOLISTRAND

SIZE: A3 CAGE CODE: 00779 DRAWING NO: C-36951 RESTRICTED TO: -

WEIGHT: -

CUSTOMER DRAWING SCALE: 2:1 SHEET: 1 OF 1 REV: F2