



Chipsmall Limited consists of a professional team with an average of over 10 year of expertise in the distribution of electronic components. Based in Hongkong, we have already established firm and mutual-benefit business relationships with customers from,Europe,America and south Asia,supplying obsolete and hard-to-find components to meet their specific needs.

With the principle of “Quality Parts,Customers Priority,Honest Operation,and Considerate Service”,our business mainly focus on the distribution of electronic components. Line cards we deal with include Microchip,ALPS,ROHM,Xilinx,Pulse,ON,Everlight and Freescale. Main products comprise IC,Modules,Potentiometer,IC Socket,Relay,Connector.Our parts cover such applications as commercial,industrial, and automotives areas.

We are looking forward to setting up business relationship with you and hope to provide you with the best service and solution. Let us make a better world for our industry!



Contact us

Tel: +86-755-8981 8866 Fax: +86-755-8427 6832

Email & Skype: info@chipsmall.com Web: www.chipsmall.com

Address: A1208, Overseas Decoration Building, #122 Zhenhua RD., Futian, Shenzhen, China



INTERCONNECTS

SERIES 302, 330, 370, 380 DISCRETE INSULATED PINS

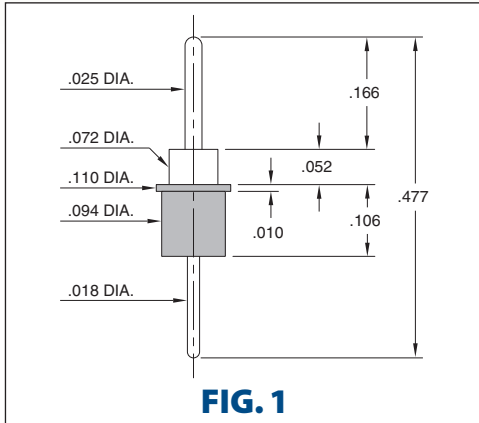


FIG. 1

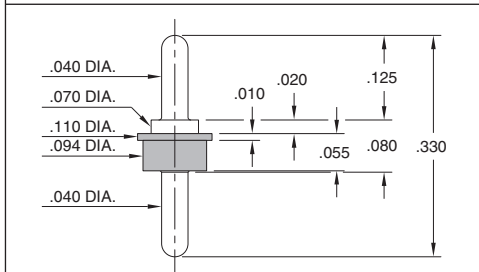


FIG. 2

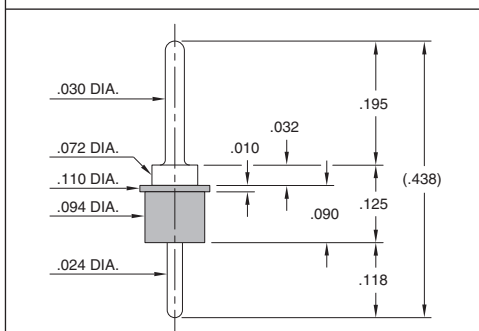


FIG. 3

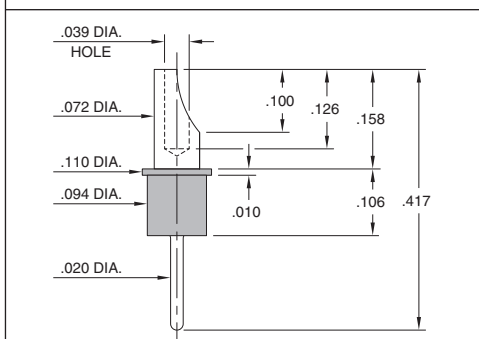
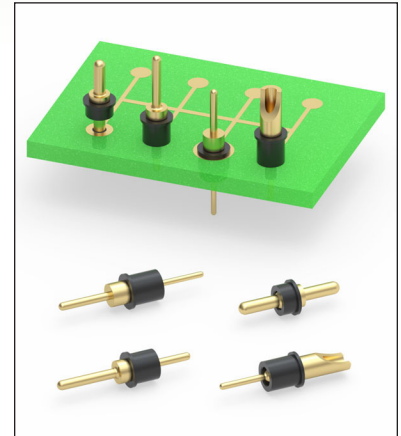


FIG. 4

- Series 302, 330, 370 and 380 insulated parts are offered in double tail & solder cup styles

302-10-001-00-900800 uses pin #0290-0
 330-10-001-00-770800 uses pin #3077-0
 370-10-001-00-070800 uses pin #7007-0
 380-10-001-00-000800 uses pin #8000-0
 See pages 162, 165, 215 and 216 for details

- Insulated terminals are used to electrically isolate single pin interconnects in an assembly. The plastic sleeve provides insulation of the terminal from nearby conductive components or for applications such as mounting through a metal panel or other non-insulated housing. The sleeve also facilitates the handling of small, individual terminals and can provide mechanical support for pins mounted on or through printed circuit boards
- Insulators are high temperature thermoplastic, suitable for most soldering operations



ORDERING INFORMATION

	Series 302...900800	Double tail Pin with Sleeve
FIG. 1	302-10-001-00-900800	
FIG. 2	Series 330...770800	Double tail Pin with Sleeve
FIG. 3	330-10-001-00-770800	
FIG. 4	Series 370...070800	Double tail Pin with Sleeve
	370-10-001-00-070800	
	Series 380...000800	Soldercup pin with Sleeve
	380-10-001-00-000800	

SPECIFICATIONS:

Insulating Sleeve tolerance: $\pm .003$

Packaging: Bulk



XX=Plating Code
See Below

For
Electrical, Mechanical
& Environmental Data,
See page 264

SPECIFY PLATING CODE XX=	10		
Pin Plating	10 μ " Au		

