



Chipsmall Limited consists of a professional team with an average of over 10 year of expertise in the distribution of electronic components. Based in Hongkong, we have already established firm and mutual-benefit business relationships with customers from,Europe,America and south Asia,supplying obsolete and hard-to-find components to meet their specific needs.

With the principle of “Quality Parts,Customers Priority,Honest Operation,and Considerate Service”,our business mainly focus on the distribution of electronic components. Line cards we deal with include Microchip,ALPS,ROHM,Xilinx,Pulse,ON,Everlight and Freescale. Main products comprise IC,Modules,Potentiometer,IC Socket,Relay,Connector.Our parts cover such applications as commercial,industrial, and automotives areas.

We are looking forward to setting up business relationship with you and hope to provide you with the best service and solution. Let us make a better world for our industry!



## Contact us

Tel: +86-755-8981 8866 Fax: +86-755-8427 6832

Email & Skype: info@chipsmall.com Web: www.chipsmall.com

Address: A1208, Overseas Decoration Building, #122 Zhenhua RD., Futian, Shenzhen, China

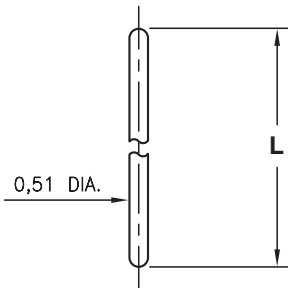


# MALE PCB PINS

## STRAIGHT AND RIGHT ANGLE PINS

### 3320

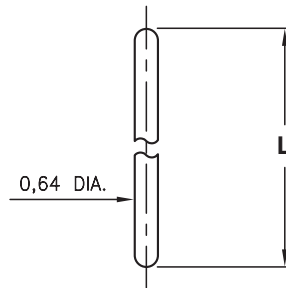
3320-X-00-XX-00-00-03-0



Basic Part Number	Length L
3320-0	6,35
3320-1	12,7

### 3325/6527

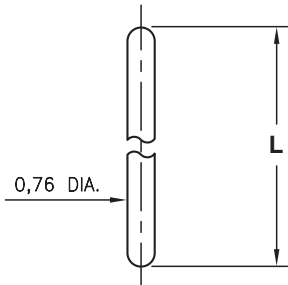
XXXX-X-00-XX-00-00-03-0



Basic Part Number	Length L
3325-0	6,35
3325-1	12,7
3325-2	19,05
6527-0	10,67

### 3330

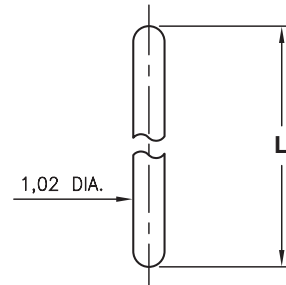
3330-X-00-XX-00-00-03-0



Basic Part Number	Length L
3330-0	6,35
3330-1	12,7
3330-2	19,05

### 3340

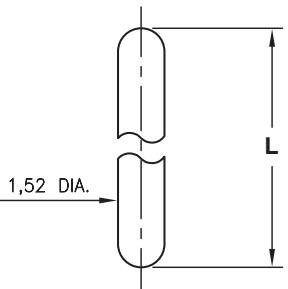
3340-X-00-XX-00-00-03-0



Basic Part Number	Length L
3340-0	6,35
3340-1	12,7
3340-2	19,05

### 3560

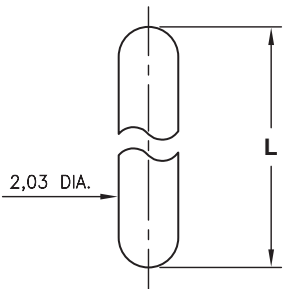
3560-X-00-XX-00-00-03-0



Basic Part Number	Length L
3560-0	6,35
3560-1	12,7
3560-2	19,05

### 3580

3580-X-00-XX-00-00-03-0



Basic Part Number	Length L
3580-0	6,35
3580-1	12,7
3580-2	19,05

#### SPECIFICATIONS:

**Pin Material:** Brass Alloy 360, 1/2 Hard  
(Except where noted)

**Dimensions:** Inches

**Tolerances On:** Lengths:  $\pm 0,13$   
Diameters:  $\pm 0,051$   
Angles:  $\pm 2^\circ$



**ORDER CODE:** XXXX - X - 00 - XX - 00 - 00 - 03 - 0

**BASIC PART #** →

← **SPECIFY PIN FINISH:**

- ◆ **80** 5,08 $\mu$ m TIN OVER NICKEL (RoHS)
- ◆ **15** 0,25 $\mu$ m GOLD OVER NICKEL (RoHS)

