



Chipsmall Limited consists of a professional team with an average of over 10 year of expertise in the distribution of electronic components. Based in Hongkong, we have already established firm and mutual-benefit business relationships with customers from,Europe,America and south Asia,supplying obsolete and hard-to-find components to meet their specific needs.

With the principle of “Quality Parts,Customers Priority,Honest Operation,and Considerate Service”,our business mainly focus on the distribution of electronic components. Line cards we deal with include Microchip,ALPS,ROHM,Xilinx,Pulse,ON,Everlight and Freescale. Main products comprise IC,Modules,Potentiometer,IC Socket,Relay,Connector.Our parts cover such applications as commercial,industrial, and automotives areas.

We are looking forward to setting up business relationship with you and hope to provide you with the best service and solution. Let us make a better world for our industry!



Contact us

Tel: +86-755-8981 8866 Fax: +86-755-8427 6832

Email & Skype: info@chipsmall.com Web: www.chipsmall.com

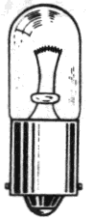
Address: A1208, Overseas Decoration Building, #122 Zhenhua RD., Futian, Shenzhen, China



Miniature Incandescent Indicators

FOR MOUNTING IN 1/16" CLEARANCE HOLE

PER MIL-L-3661B



T-3 1/4
MINIATURE
BAYONET BASE

See lamp ratings
on page K.

MATERIALS AND FINISHES

- Mounting Bushing and Lens Holder: Brass, black nickel finish
- Mounting Nut: Brass, white nickel finish
- Internal-tooth Lockwasher: Phosphor bronze, white nickel finish
- Terminals: Solder — Brass, hot-tinned with elongated slot

Recognized under the component
program of Underwriters'
Laboratories Inc.

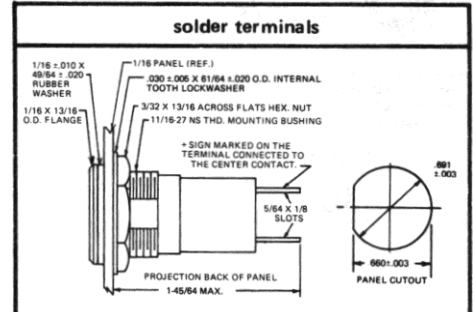
75W., 125V.



373 SERIES
375 SERIES
376 SERIES

BASE PART NUMBERS

WITH SCREW-IN LENS CAPS



LH76/3 373-0410-01-203

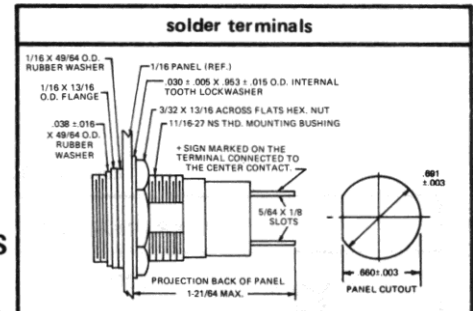
CAP PART NUMBERS

COMPLETE ASSEMBLY PART NUMBERS

| | | |
|--|---|--------------------------|
| | <p>LC14 81-0131-203 convex, transparent</p> | <p>373-0410-0131-203</p> |
| | <p>LC17 203-0131-203 convex, mech. dimmer complete blackout</p> | <p>375-0410-0131-203</p> |
| | <p>LC18 204-0131-203 convex, mech. dimmer semi-blackout</p> | <p>376-0410-0131-203</p> |

Part numbers shown in gray are normally
in inventory at your Dialight Distributor.

WITH SCREW-ON LENS CAPS



LH77/3 377-0410-11-203

377 SERIES

BASE PART NUMBERS

CAP PART NUMBERS

COMPLETE ASSEMBLY PART NUMBERS

| | | |
|--|---|--------------------------|
| | <p>LC19 169-1131-203 stovepipe, transparent</p> | <p>377-0410-1131-203</p> |
| | <p>LC20 169-1191-203 stovepipe internal fluting</p> | <p>377-0410-1191-203</p> |

Part numbers listed in this catalog designate products with RED lens.
For ordering lens colors other than red, consult chart on page 2D.

Order complete with lamp to be assured of receiving the
indicator light and correct lamp together for immediate use.