



Chipsmall Limited consists of a professional team with an average of over 10 year of expertise in the distribution of electronic components. Based in Hongkong, we have already established firm and mutual-benefit business relationships with customers from,Europe,America and south Asia,supplying obsolete and hard-to-find components to meet their specific needs.

With the principle of “Quality Parts,Customers Priority,Honest Operation,and Considerate Service”,our business mainly focus on the distribution of electronic components. Line cards we deal with include Microchip,ALPS,ROHM,Xilinx,Pulse,ON,Everlight and Freescale. Main products comprise IC,Modules,Potentiometer,IC Socket,Relay,Connector.Our parts cover such applications as commercial,industrial, and automotives areas.

We are looking forward to setting up business relationship with you and hope to provide you with the best service and solution. Let us make a better world for our industry!



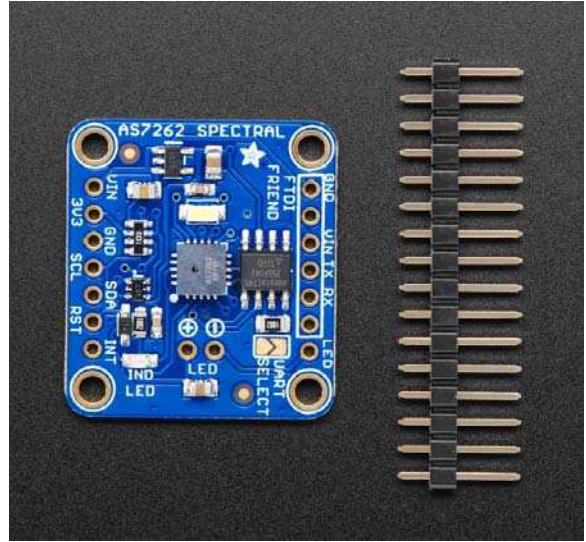
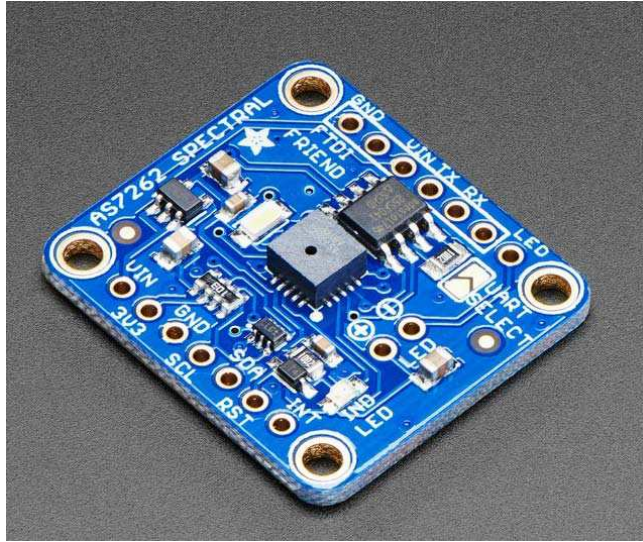
Contact us

Tel: +86-755-8981 8866 Fax: +86-755-8427 6832

Email & Skype: info@chipsmall.com Web: www.chipsmall.com

Address: A1208, Overseas Decoration Building, #122 Zhenhua RD., Futian, Shenzhen, China





Adafruit AS7262 6-Channel Visible Light / Color Sensor Breakout

PRODUCT ID: 3779

*The colors of the rainbow, so pretty in the sky
Are also in this sensor, controlled by you and I!*

Detect trees of green, and red roses too with the new Adafruit AS7262 6-Channel Visible Light / Color Sensor Breakout. This sensor from AMS has 6 integrated visible light sensing channels for red, orange, yellow, green, blue, and violet. These channels can be read via the I2C bus as either raw 16-bit values or calibrated floating-point values. There is also an on-board temperature sensor that can be used to read the temperature of the chip, and a powerful LED flash to reflect light off objects for better color detection.

The 6 channels on the AS7262 are realized by silicon interference filters at 450nm, 500nm, 550nm, 570nm, 600nm, and 650nm. This breakout uses the I2C interface on the chip by default, but a UART interface that accepts AT commands is also selectable.

We've placed the sensor on a PCB for you and included an SPI flash chip pre-programmed with the device firmware, a 3.3V regulator, I2C level shifting, and the recommended LED flash. Both the I2C and UART interfaces are broken out, making this breakout an excellent all-in-one solution for all your color-sensing needs. The pinout for the UART interface is plug-and-play compatible with the Adafruit FTDI Friend.

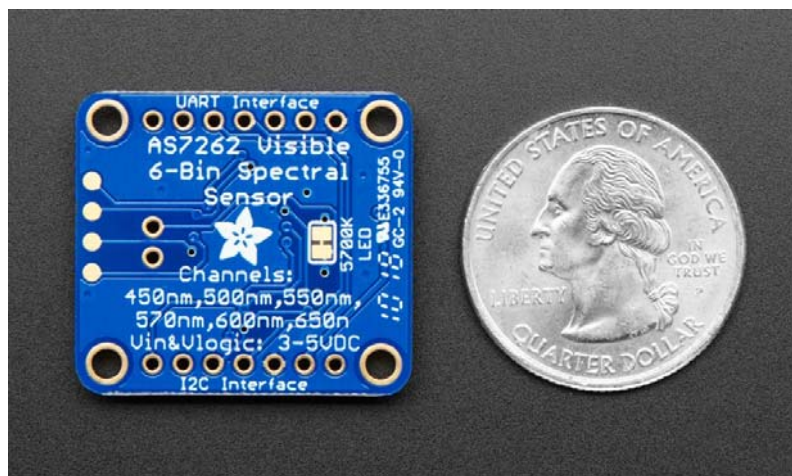
We've also prepared software libraries to get you up and running in Arduino or CircuitPython with just a few lines of code!

Check out our full guide for schematics, datasheets, Arduino & CircuitPython code and more!

<https://cdn-learn.adafruit.com/downloads/pdf/adafruit-as7262-6-channel-visible-light-sensor.pdf>

Product Dimensions: 27.8mm x 25.0mm x 3.9mm / 1.1" x 1.0" x 0.2"

Product Weight: 2.6g / 0.1oz



<https://www.adafruit.com/product/3779> 4-3-18