



Chipsmall Limited consists of a professional team with an average of over 10 year of expertise in the distribution of electronic components. Based in Hongkong, we have already established firm and mutual-benefit business relationships with customers from,Europe,America and south Asia,supplying obsolete and hard-to-find components to meet their specific needs.

With the principle of “Quality Parts,Customers Priority,Honest Operation,and Considerate Service”,our business mainly focus on the distribution of electronic components. Line cards we deal with include Microchip,ALPS,ROHM,Xilinx,Pulse,ON,Everlight and Freescale. Main products comprise IC,Modules,Potentiometer,IC Socket,Relay,Connector.Our parts cover such applications as commercial,industrial, and automotives areas.

We are looking forward to setting up business relationship with you and hope to provide you with the best service and solution. Let us make a better world for our industry!



Contact us

Tel: +86-755-8981 8866 Fax: +86-755-8427 6832

Email & Skype: info@chipsmall.com Web: www.chipsmall.com

Address: A1208, Overseas Decoration Building, #122 Zhenhua RD., Futian, Shenzhen, China



This lovely little display breakout is the best way to add a small, colorful and very bright display to any project. Since the display uses 4-wire SPI to communicate and has its own pixel-addressable frame buffer, it can be used with every kind of microcontroller. Even a very small one with low memory and few pins available! The 1.54" display has 240x240 16-bit full color pixels and is an IPS display, so the color looks great up to 80 degrees off axis in any direction. The TFT driver (ST7789) is very similar to the popular ST7735, and our Arduino library supports it well.

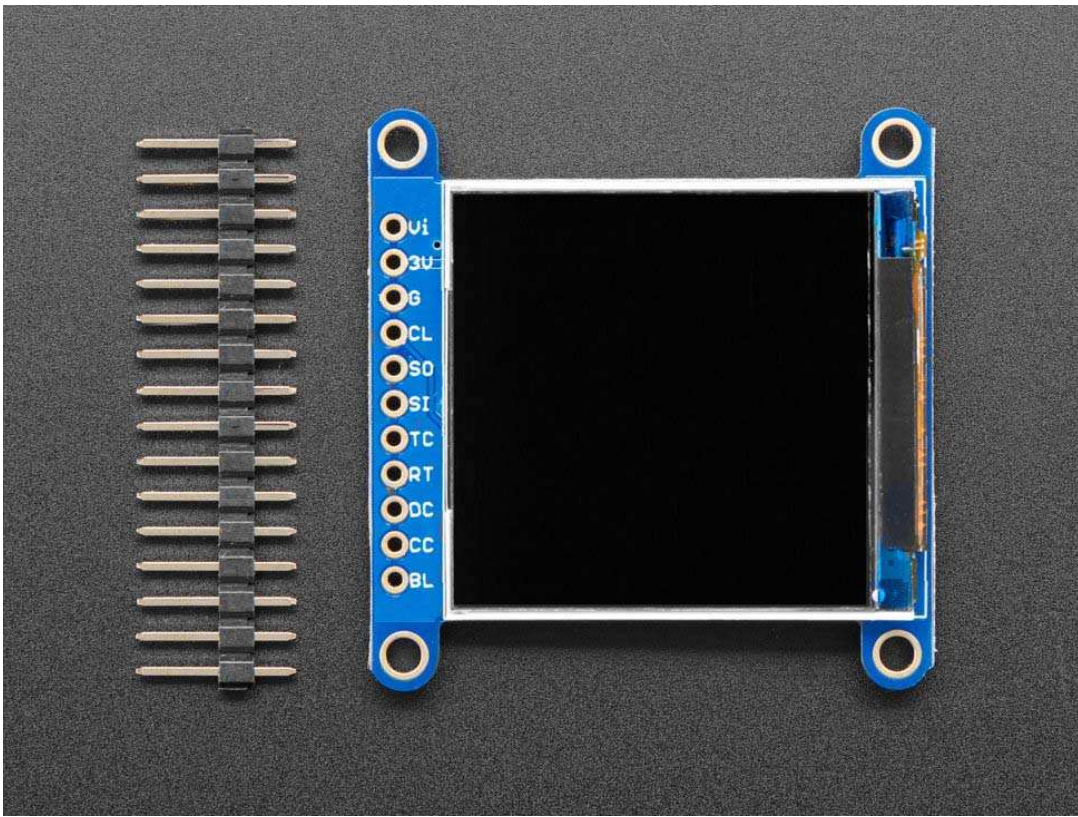
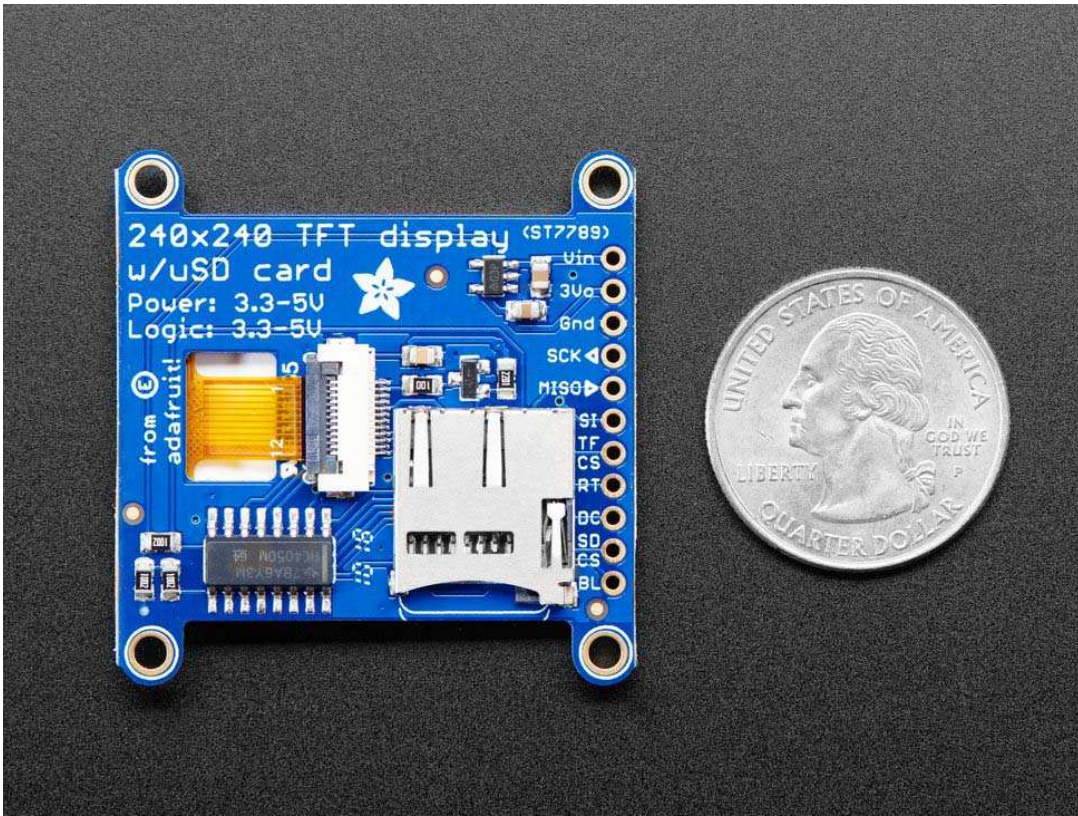
Our breakout has the TFT display soldered on (it uses a delicate flex-circuit connector) as well as a ultra-low-dropout 3.3V regulator and a 3/5V level shifter so you can use it with 3.3V or 5V power and logic. We also had a little space so we placed a microSD card holder so you can easily load full color bitmaps from a FAT16/FAT32 formatted microSD card. The microSD card is not included, but you can pick one up [here](#).

Of course, we wouldn't just leave you with a datasheet and a "good luck!" – we've written a full open source graphics library that can draw pixels, lines, rectangles, circles, text and bitmaps as well as example code and a wiring tutorial. The code is written for Arduino but can be easily ported to your favorite microcontroller!

Specifications:

- 1.54" LCD TFT display
- Built-in microSD slot
- 1x16 header for easy breadboarding
- 4 x 0.1" / 2.5mm mounting holes in corners
- LCD screen dimensions: 32mm x 31mm / 1.3" x 1.2"
- Overall dimension: 42mm x 41mm x 6mm / 1.7" x 1.6" x 0.2"
- Mounting holes: 1.45" x 1.4"
- Weight: 8.7g





<https://www.adafruit.com/product/3787> 4-17-18