



Chipsmall Limited consists of a professional team with an average of over 10 year of expertise in the distribution of electronic components. Based in Hongkong, we have already established firm and mutual-benefit business relationships with customers from,Europe,America and south Asia,supplying obsolete and hard-to-find components to meet their specific needs.

With the principle of "Quality Parts,Customers Priority,Honest Operation,and Considerate Service",our business mainly focus on the distribution of electronic components. Line cards we deal with include Microchip,ALPS,ROHM,Xilinx,Pulse,ON,Everlight and Freescale. Main products comprise IC,Modules,Potentiometer,IC Socket,Relay,Connector.Our parts cover such applications as commercial,industrial, and automotives areas.

We are looking forward to setting up business relationship with you and hope to provide you with the best service and solution. Let us make a better world for our industry!



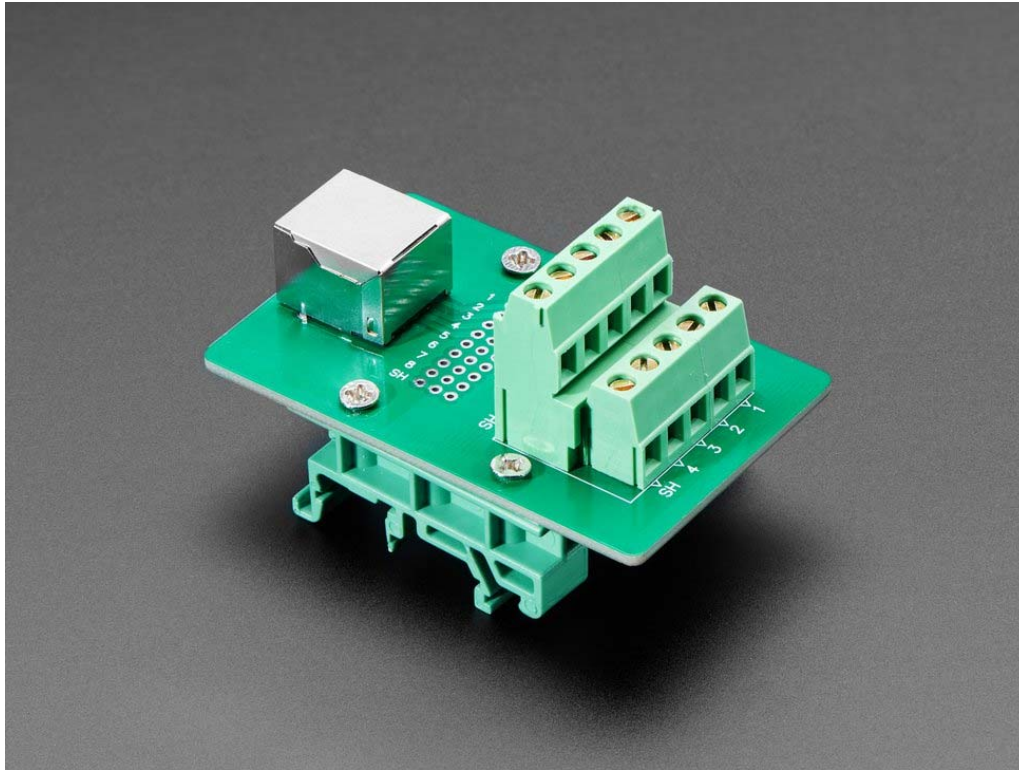
## Contact us

Tel: +86-755-8981 8866 Fax: +86-755-8427 6832

Email & Skype: info@chipsmall.com Web: www.chipsmall.com

Address: A1208, Overseas Decoration Building, #122 Zhenhua RD., Futian, Shenzhen, China





## DIN Rail RJ-45 To Terminal Block Adapter – Right Angle Jack

PRODUCT ID: 3797

This one going out to all the makers and designers who use DIN railing in their builds. This adapter plate was recommended by a customer, its perfect for simplifying complex wiring. You connect an RJ45 cable (a.k.a Ethernet) to this very PCB which can be DIN rail-mounted. Then, all 8 wires are broken out into terminal blocks, so you can connect and power your sensors, displays, microcontrollers, etc.

No soldering required! Just unscrew the terminal blocks and slide in your stranded or solid-core wire.

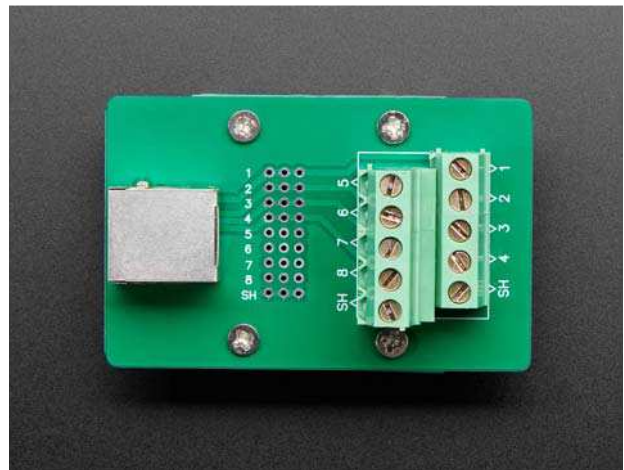
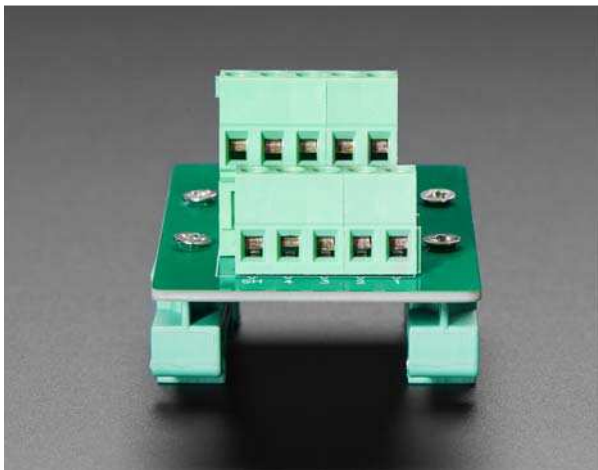
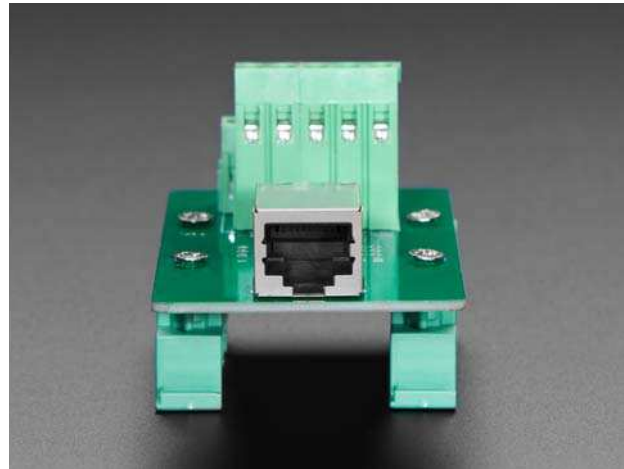
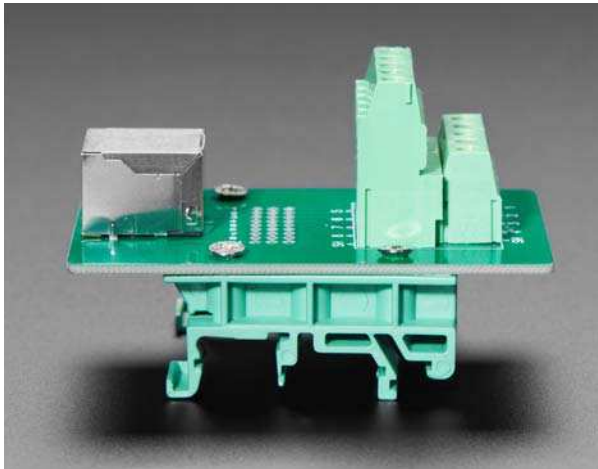
Note that these aren't recommended for actual Ethernet traffic, especially long term...given that the twisted pairs are decidedly untwisted when they are on the PCB but for basic power/data distribution, RJ45's are great!

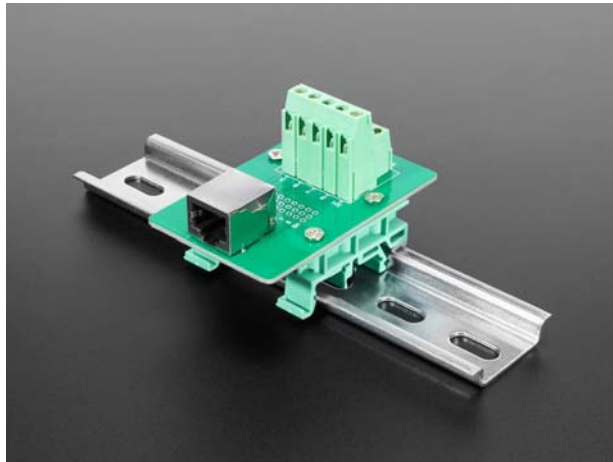
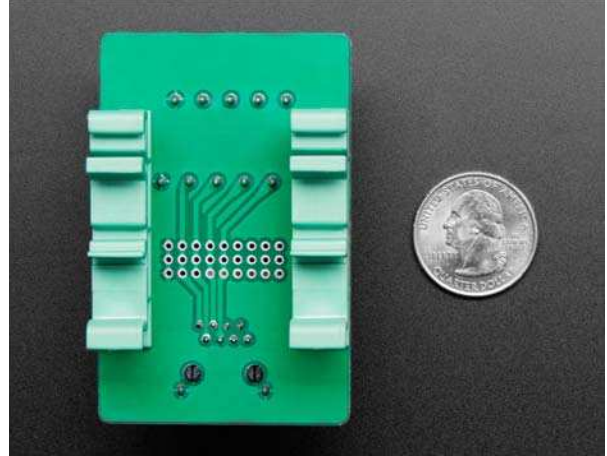
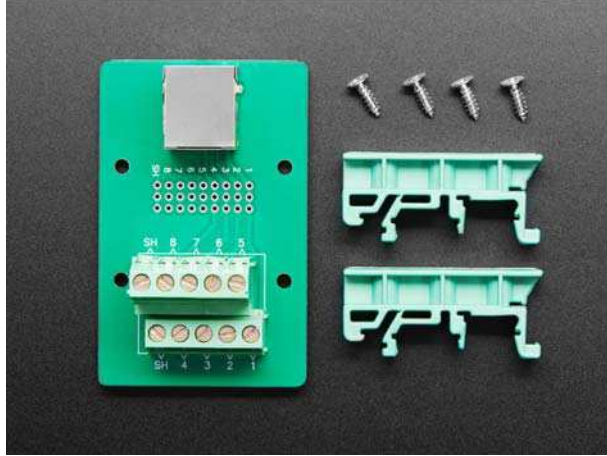
This is the DIN Rail RJ-45 to Terminal Block Adapter that comes with a Right Angle RJ45 Ethernet jack on one end and terminal blocks on the other. We also have a DIN Rail RJ-45 to Terminal Block Adapter - Vertical

## TECHNICAL DETAILS

Product Dimensions: 70.0mm x 45.0mm x 30.5mm / 2.8" x 1.8" x 1.2"

Product Weight: 30.4g / 1.1oz





<https://www.adafruit.com/product/3797> 6-4-18