



Chipsmall Limited consists of a professional team with an average of over 10 year of expertise in the distribution of electronic components. Based in Hongkong, we have already established firm and mutual-benefit business relationships with customers from,Europe,America and south Asia,supplying obsolete and hard-to-find components to meet their specific needs.

With the principle of "Quality Parts,Customers Priority,Honest Operation,and Considerate Service",our business mainly focus on the distribution of electronic components. Line cards we deal with include Microchip,ALPS,ROHM,Xilinx,Pulse,ON,Everlight and Freescale. Main products comprise IC,Modules,Potentiometer,IC Socket,Relay,Connector.Our parts cover such applications as commercial,industrial, and automotives areas.

We are looking forward to setting up business relationship with you and hope to provide you with the best service and solution. Let us make a better world for our industry!



Contact us

Tel: +86-755-8981 8866 Fax: +86-755-8427 6832

Email & Skype: info@chipsmall.com Web: www.chipsmall.com

Address: A1208, Overseas Decoration Building, #122 Zhenhua RD., Futian, Shenzhen, China



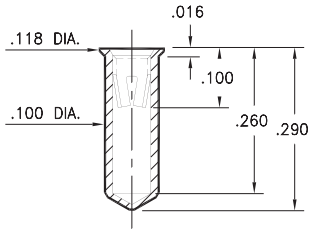
PIN RECEPTACLES

FOR .040" - .050" DIAMETER PINS

0355

0355-0-15-XX-02-XX-10-0

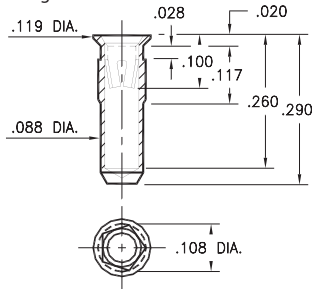
Solder mount in .102 min. mounting hole



0354

0354-0-15-XX-02-XX-10-0

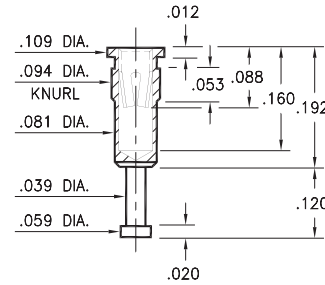
Pentagonal press-fit in .104 min. plated through-hole



3490

3490-0-15-XX-02-XX-10-0

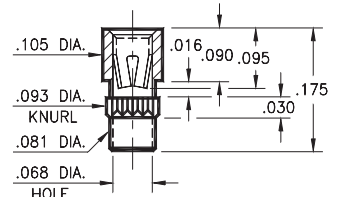
Press-fit in .091 mounting hole



3808

3808-0-15-XX-02-XX-10-0

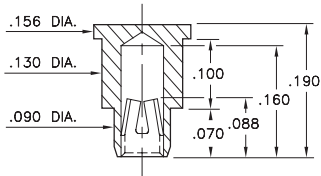
Press-fit in .090 mounting hole



9184

9184-0-15-XX-02-XX-40-0

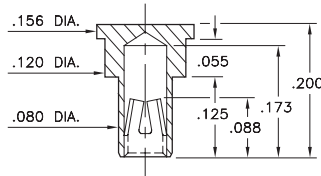
Bottom entry, surface mount
.092 min. plated through-hole
Also available on carrier tape,
Order as: 9184-0-57-XX-02-XX-40-0



9222

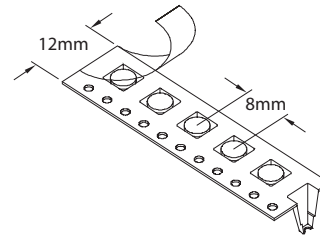
9222-2-15-XX-02-XX-40-0

Bottom entry, surface mount
.082 min. plated through-hole
Also available on carrier tape,
Order as: 9222-2-57-XX-02-XX-40-0



Carrier tape format for
9184 and 9222.

1,500 pieces per 13" reel



SPECIFICATIONS:

Shell Material: Brass Alloy 360, 1/2 Hard

Contact Material: Beryllium Copper Alloy 172, HT

Dimensions: Inches

Tolerances On: Lengths: ±.005

Diameters: ±.002

Angles: ± 2°



ORDER CODE: XXXX - X - XX - XX - 02 - XX - XX - 0

BASIC PART #

SPECIFY SHELL FINISH:

- 01 200 μ" TIN/LEAD OVER NICKEL
- ◆ 80 200 μ" TIN OVER NICKEL (RoHS)
- ◆ 15 10 μ" GOLD OVER NICKEL (RoHS)

SPECIFY CONTACT FINISH:

- 01 200 μ" TIN/LEAD OVER NICKEL
- ◆ 80 200 μ" TIN OVER NICKEL (RoHS)
- ◆ 27 30 μ" GOLD OVER NICKEL (RoHS)

SELECT CONTACT:

#02 CONTACT (DATA ON PAGE 259)

(For alternate contact choices, see group F on page 248)

