



Chipsmall Limited consists of a professional team with an average of over 10 year of expertise in the distribution of electronic components. Based in Hongkong, we have already established firm and mutual-benefit business relationships with customers from,Europe,America and south Asia,supplying obsolete and hard-to-find components to meet their specific needs.

With the principle of “Quality Parts,Customers Priority,Honest Operation,and Considerate Service”,our business mainly focus on the distribution of electronic components. Line cards we deal with include Microchip,ALPS,ROHM,Xilinx,Pulse,ON,Everlight and Freescale. Main products comprise IC,Modules,Potentiometer,IC Socket,Relay,Connector.Our parts cover such applications as commercial,industrial, and automotives areas.

We are looking forward to setting up business relationship with you and hope to provide you with the best service and solution. Let us make a better world for our industry!



## Contact us

Tel: +86-755-8981 8866 Fax: +86-755-8427 6832

Email & Skype: info@chipsmall.com Web: www.chipsmall.com

Address: A1208, Overseas Decoration Building, #122 Zhenhua RD., Futian, Shenzhen, China

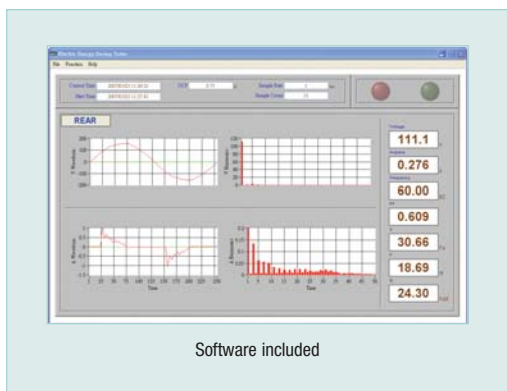


# Universal AC Power Source + AC Power Analyzer

**Front (100W) and Rear (2000W) Universal Output Sockets**  
For High Resolution Power testing to 10mW

## Features:

- Low Power, high resolution front panel output with variable voltage and frequency
- HighPower rear panel output supplies line frequency and voltage
- Low Power Measurement (10mW to 100W) for testing power consumption of small devices or standby power at different voltages and frequencies
- High Power Measurement with Harmonics measurements 100mW to 1000W @ 110V or 100mW to 2000W @ 220V
- Power Quality Measurement (Watts, Power Factor, Voltage, Current, Harmonics)
- Cost Function calculates cost per day, month, and year
- 99 memory locations for preset voltage and frequency output settings
- Standby and Operation button
- User-programmable Over Current Protection (current limiting)
- Programmable through the built-in RS-232 interface
- Data acquisition mode captures readings to your PC with a user-programmable sampling rate of 2 to 65,535 seconds
- Complete with AC power cord, RS-232 to USB cable and software



Specifications	Range	Resolution	Accuracy
<b>Front Panel</b>			
Output Voltage	85 to 250V (adjustable)	0.1V	±1%
Output Frequency	45 to 65Hz (adjustable)	0.01Hz	±0.1Hz
Power	10mW to 100W	0.1mW	±(1% + 0.05W)
AC Current	5mA to 1.5A	0.1mA	±1%
Power Factor	0 to 1	0.001	±0.04
<b>Rear Panel</b>			
Output Voltage	line voltage	0.1V	±1%
Output Frequency	line frequency	0.01Hz	±0.1Hz
Power	100mW to 2000W	0.1mW	±(1% + 0.5W)
AC Current	5mA to 10A	0.1mA	±1%
Power Factor	0 to 1 0.001	±0.04	
Harmonics (in amps)	1 to 50th order	0.1mA	±1.4% (1-10th)
THD	0.0 to 999.9%	0.1%	
Input Power Source	110 or 220V; 45 to 65Hz		
Dimension	12 x 10.2 x 5.9" (305 x 260 x 151mm)		
Weight	21.8lbs (9.9kg)		

## Ordering Information:

380820 .....Universal Power Supply + Power Analyzer

