



Chipsmall Limited consists of a professional team with an average of over 10 year of expertise in the distribution of electronic components. Based in Hongkong, we have already established firm and mutual-benefit business relationships with customers from,Europe,America and south Asia,supplying obsolete and hard-to-find components to meet their specific needs.

With the principle of “Quality Parts,Customers Priority,Honest Operation,and Considerate Service”,our business mainly focus on the distribution of electronic components. Line cards we deal with include Microchip,ALPS,ROHM,Xilinx,Pulse,ON,Everlight and Freescale. Main products comprise IC,Modules,Potentiometer,IC Socket,Relay,Connector.Our parts cover such applications as commercial,industrial, and automotives areas.

We are looking forward to setting up business relationship with you and hope to provide you with the best service and solution. Let us make a better world for our industry!



## Contact us

Tel: +86-755-8981 8866 Fax: +86-755-8427 6832

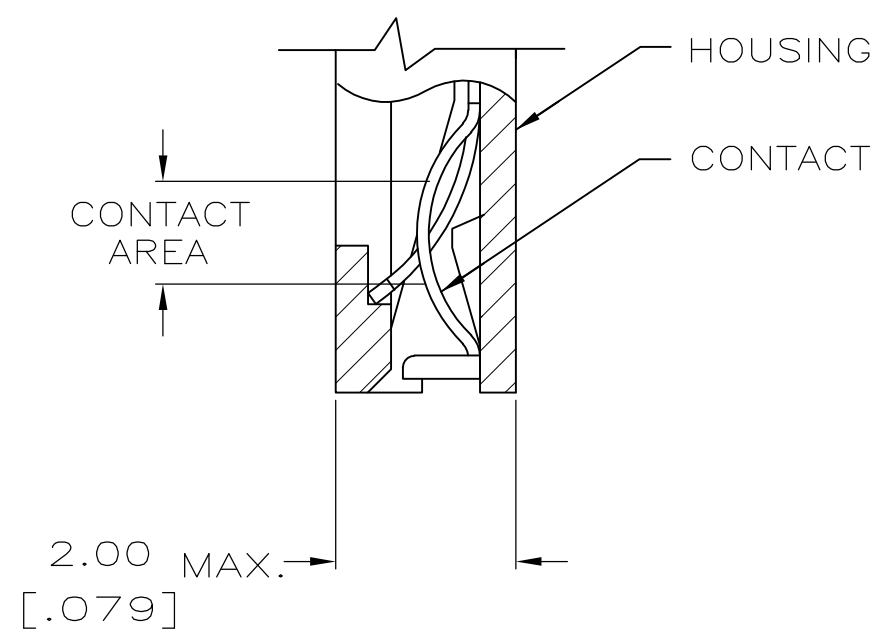
Email & Skype: info@chipsmall.com Web: www.chipsmall.com

Address: A1208, Overseas Decoration Building, #122 Zhenhua RD., Futian, Shenzhen, China



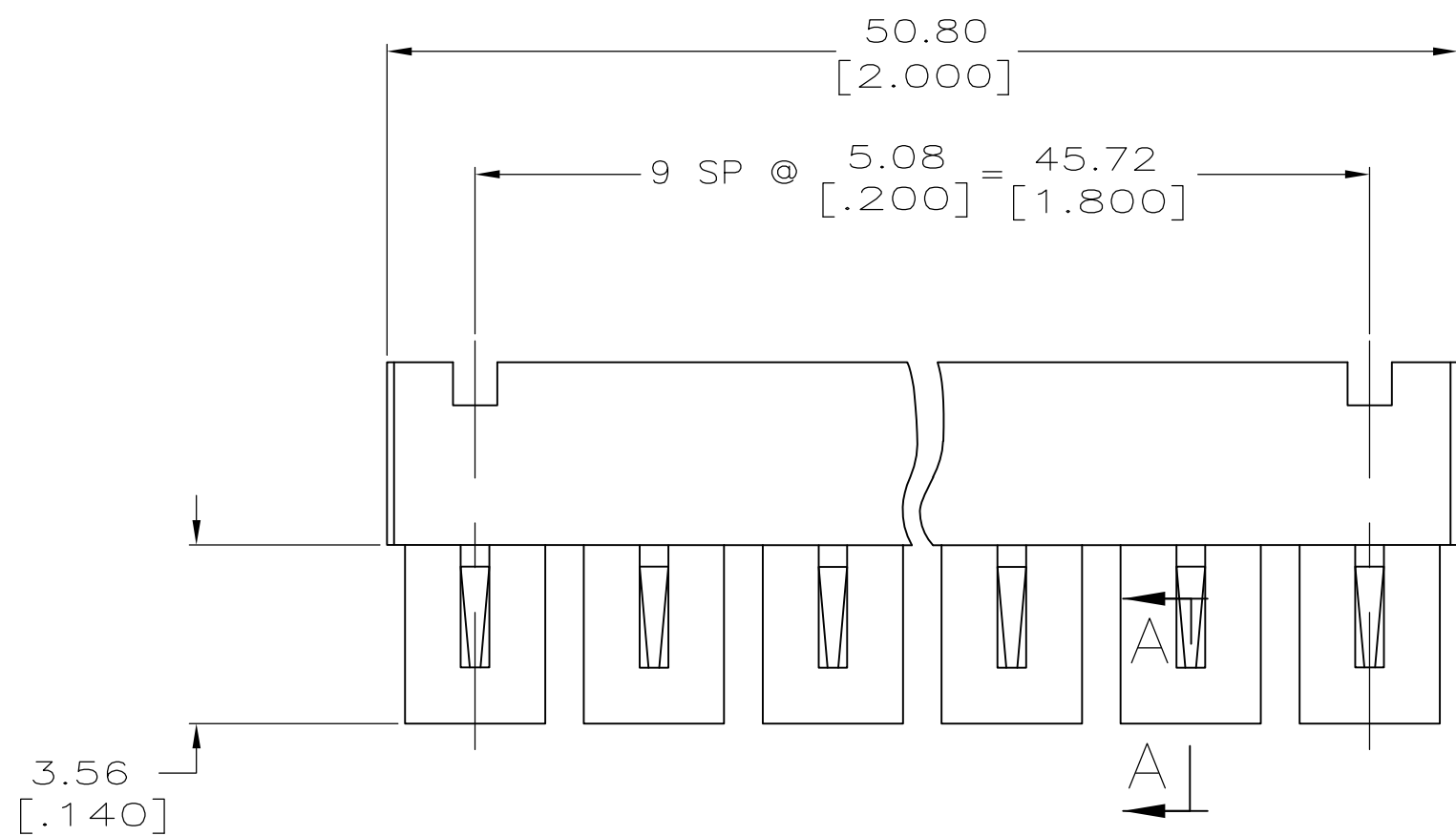
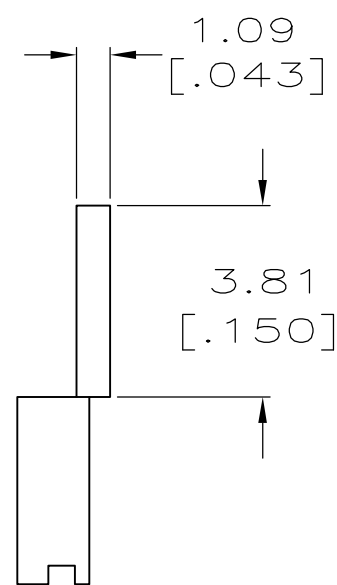
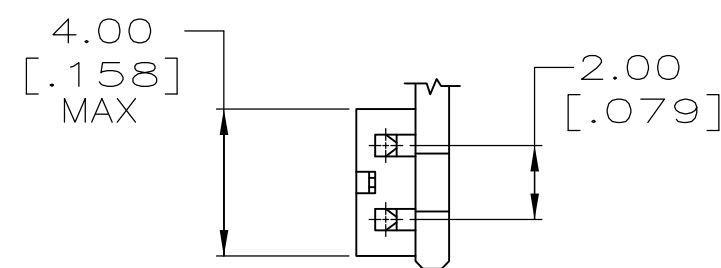
THIS DRAWING IS UNPUBLISHED. RELEASED FOR PUBLICATION  
 © COPYRIGHT - By - ALL RIGHTS RESERVED.

LOC	DIST	REVISIONS			
P	LTR	DESCRIPTION	DATE	DWN	APVD
AG	53	F1	REVISED PER ECO-11-004835	11MAR11	RK HMR



SECTION A-A  
 SCALE 10:1  
 10 PLACES

- ① HOUSING MATERIAL: BLACK THERMOPLASTIC, 94V-0.
- ② CONTACT MATERIAL: BERYLLIUM COPPER.
- ③ CONTACT PLATED WITH 0.00038 [.000015] GOLD IN CONTACT AREA OVER 0.00127 [.000050] NICKEL OVERALL.
- 4 CONNECTOR MATES WITH 0.5mm [.020] SQUARE POSTS ON 2.0mm [.079] CENTERS, MINIMUM POST LENGTH 2.54 [.100].
- ⑤ PART NO. DENOTES INDIVIDUAL TWO POSITION SHUNT, WHICH IS PACKAGED ON BREAKAWAY COMBS OF TEN SHUNTS.
- ⑥ CONTACT PLATED WITH 0.00076 [.000030] GOLD IN CONTACT AREA OVER 0.00127 [.000050] NICKEL OVERALL.
- ⑦ CONTACT PLATED WITH 0.00381 [.000150] MIN. BRIGHT TIN-LEAD OVER 0.00127 [.000050] MIN. NICKEL OVERALL.



⑥	382575-3
③	382575-2
⑦	382575-1
FINISH	PART NO ⑤

THIS DRAWING IS A CONTROLLED DOCUMENT.		DWN	C.WHITT	1-8-93		TE Connectivity		
DIMENSIONS: MM [ INCHES ]		CHK	R.TALLEY	1-8-93		NAME		
TOLERANCES UNLESS OTHERWISE SPECIFIED:		APVD	D.HUFFMAN	1-8-93		MINI-SHUNT ASSY, 2mm		
0 PLC ± - 1 PLC ± - 2 PLC ± - 3 PLC ± 0.26 [.010] 4 PLC ± - ANGLES ± -		PRODUCT SPEC		APPLICATION SPEC		RESTRICTED TO		
MATERIAL	FINISH	WEIGHT	-		SIZE	CAGE CODE	DRAWING NO	
① ②	SEE TABLE	CUSTOMER DRAWING	A2	00779	C=382575	-		
SCALE 4:1					SHEET 1 of 1	REV F1		