



Chipsmall Limited consists of a professional team with an average of over 10 year of expertise in the distribution of electronic components. Based in Hongkong, we have already established firm and mutual-benefit business relationships with customers from,Europe,America and south Asia,supplying obsolete and hard-to-find components to meet their specific needs.

With the principle of “Quality Parts,Customers Priority,Honest Operation,and Considerate Service”,our business mainly focus on the distribution of electronic components. Line cards we deal with include Microchip,ALPS,ROHM,Xilinx,Pulse,ON,Everlight and Freescale. Main products comprise IC,Modules,Potentiometer,IC Socket,Relay,Connector.Our parts cover such applications as commercial,industrial, and automotives areas.

We are looking forward to setting up business relationship with you and hope to provide you with the best service and solution. Let us make a better world for our industry!



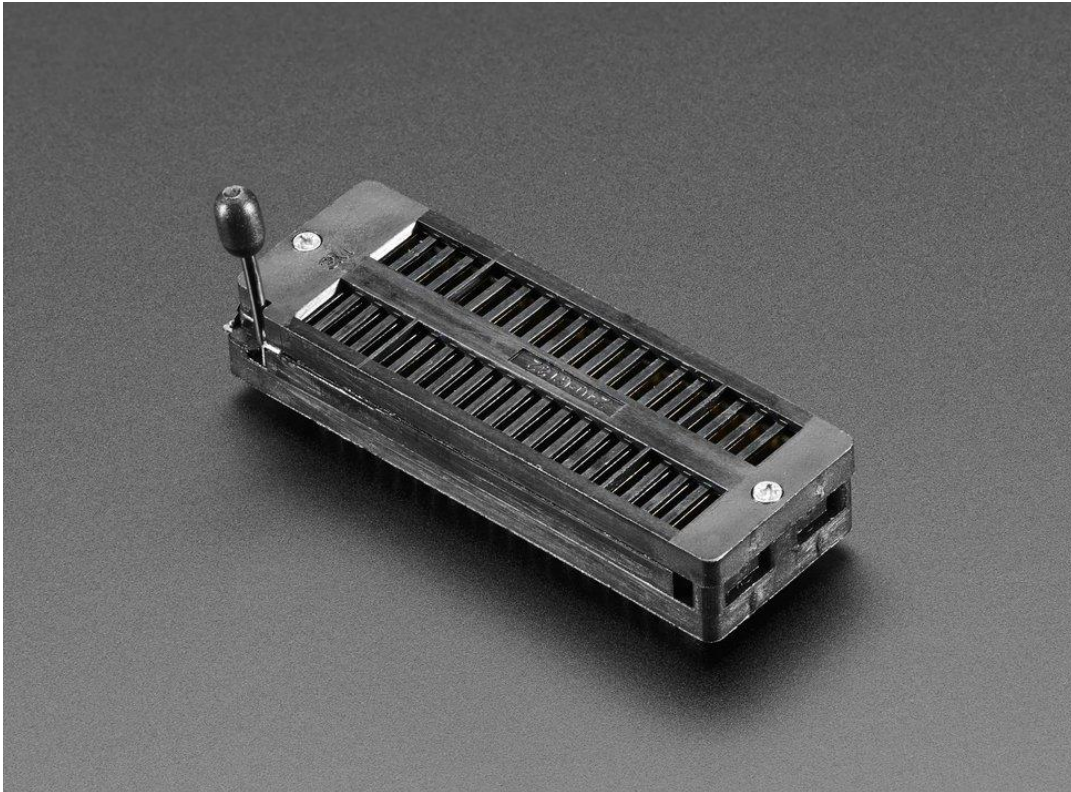
Contact us

Tel: +86-755-8981 8866 Fax: +86-755-8427 6832

Email & Skype: info@chipsmall.com Web: www.chipsmall.com

Address: A1208, Overseas Decoration Building, #122 Zhenhua RD., Futian, Shenzhen, China





40-pin ZIF socket

PRODUCT ID: 383

A ZIF (Zero Insertion Force Socket) allows you to insert and remove chips easily from an existing circuits. These are often used for chip programmers or when you need to test a chip without damaging it. Move the lever up and chips drop right in. Move the lever down to 'latch' the chip in place.

This socket is designed for DIP chips of up to 40 pins and up to 0.6" wide. So really, its good for any size chip you'll find. What's nice about it is it can snap into an existing circuit board or socket that is designed for a 40-pin 0.6" chip so you may not have to redesign the board! This socket is gold plated so it will last a long time.

TECHNICAL DETAILS

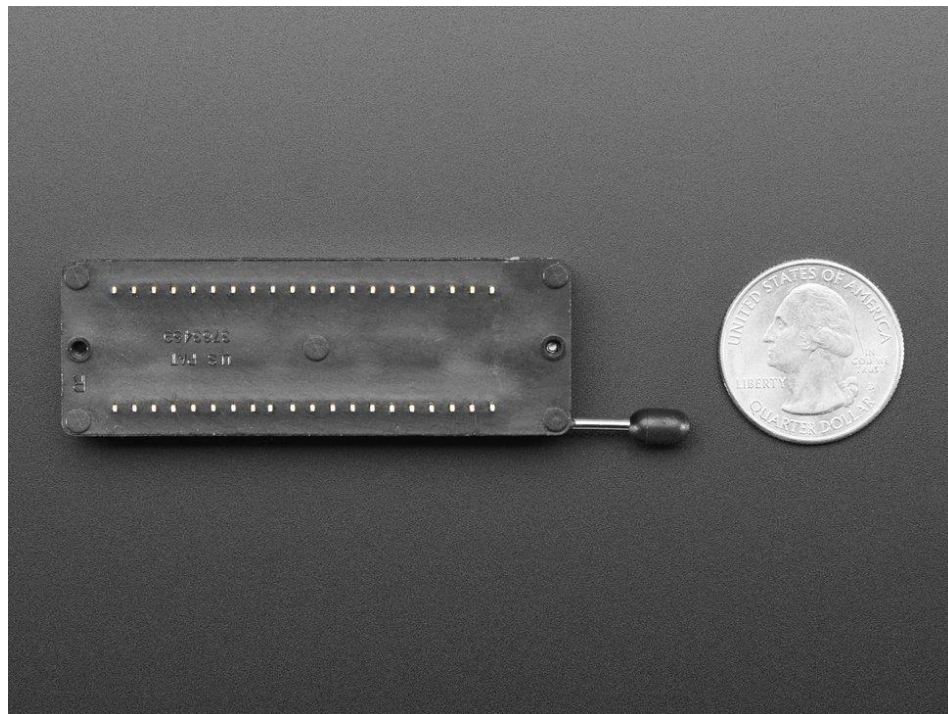
Fits up to 40-pin DIP chips, in 0.3"-0.6" width

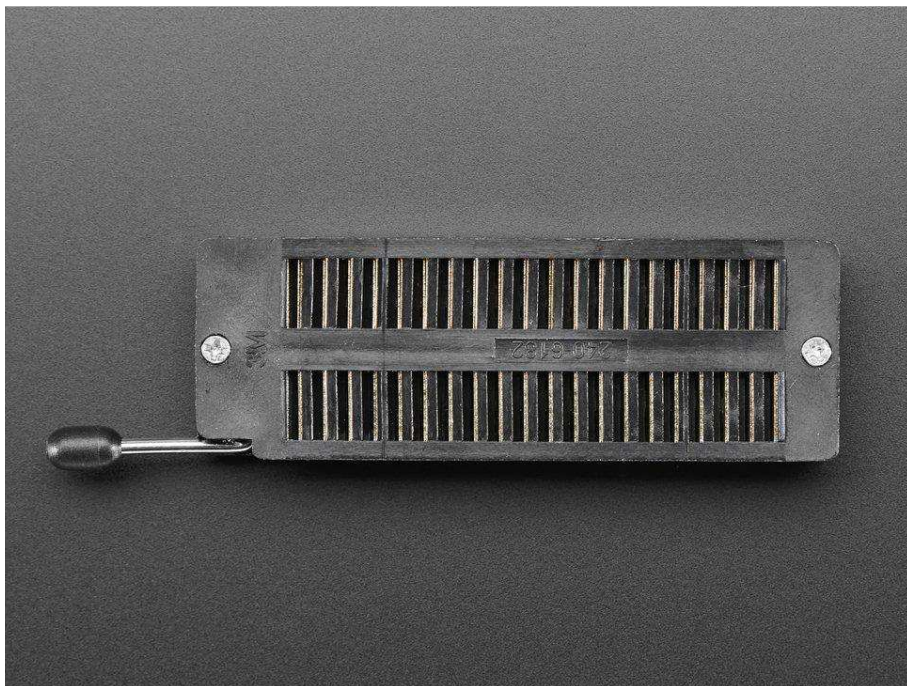
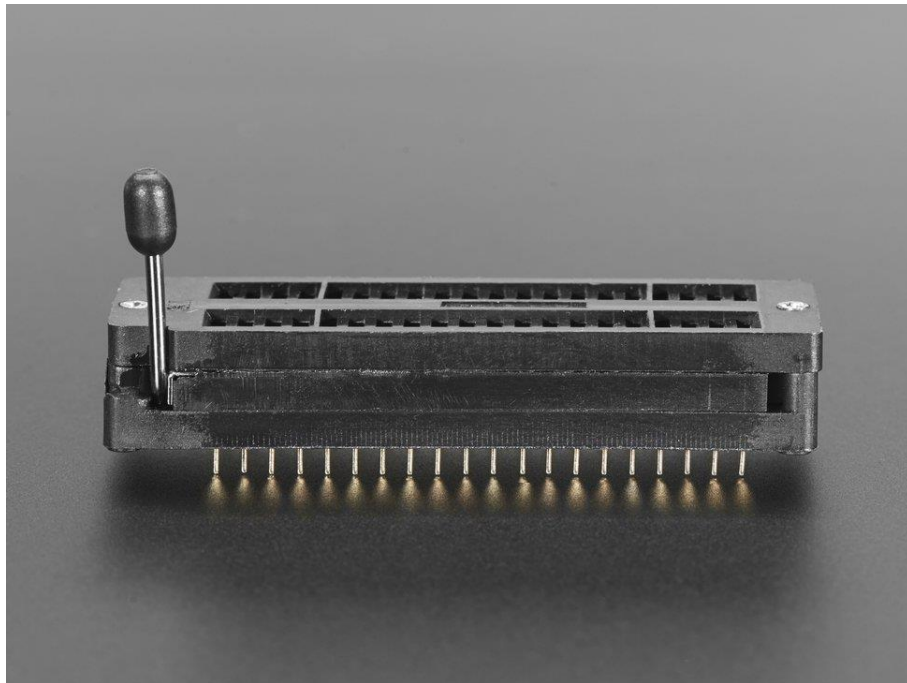
Overall body size: 0.9" x 2.6" x 0.46" (23mm x 66mm x 12mm) – not including lever or pins

Pins are 0.6" apart (fit into a 0.6" socket) and 2.8mm (0.11") long

Fits and works in a breadboard!

We have a tutorial on using ZIF sockets to make a mass-programmer





<https://www.adafruit.com/product/383> 4-30-18