



Chipsmall Limited consists of a professional team with an average of over 10 year of expertise in the distribution of electronic components. Based in Hongkong, we have already established firm and mutual-benefit business relationships with customers from,Europe,America and south Asia,supplying obsolete and hard-to-find components to meet their specific needs.

With the principle of “Quality Parts,Customers Priority,Honest Operation,and Considerate Service”,our business mainly focus on the distribution of electronic components. Line cards we deal with include Microchip,ALPS,ROHM,Xilinx,Pulse,ON,Everlight and Freescale. Main products comprise IC,Modules,Potentiometer,IC Socket,Relay,Connector.Our parts cover such applications as commercial,industrial, and automotives areas.

We are looking forward to setting up business relationship with you and hope to provide you with the best service and solution. Let us make a better world for our industry!



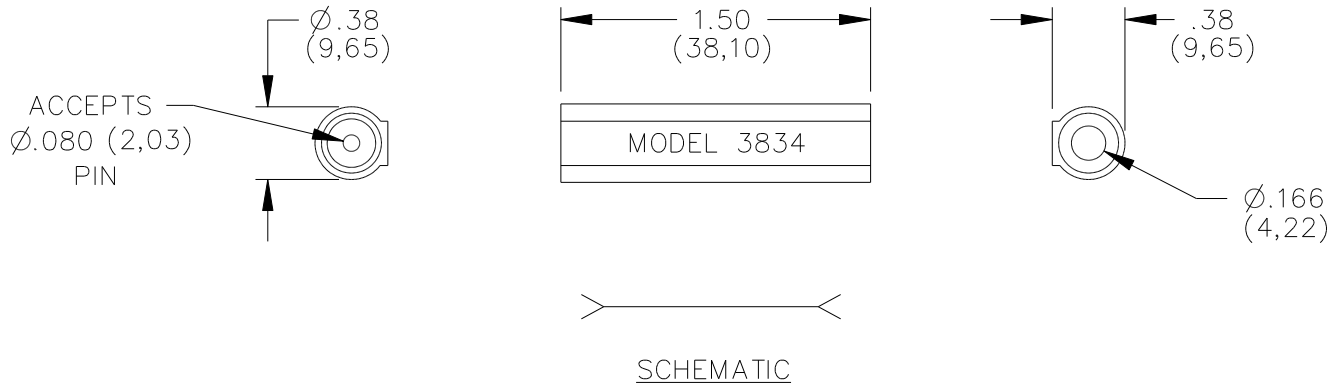
Contact us

Tel: +86-755-8981 8866 Fax: +86-755-8427 6832

Email & Skype: info@chipsmall.com Web: www.chipsmall.com

Address: A1208, Overseas Decoration Building, #122 Zhenhua RD., Futian, Shenzhen, China





FEATURES:

- This splice accepts a standard banana plug on one end and a 2.0 (.080) pin tip plug on the other end.

MATERIALS:

Upper Conn.: Banana Jack

Material: Brass per QQ-B-626, Alloy 360, ½ Hard.

Finish: Nickel plated per QQ-N-290, Class 2, 200/300 microinches.

Insulation:

Polypropylene molded to banana jack body and pin tip body.

Marking: "POMONA ELECTRONICS CALIF." "MODEL 3834"

Lower Conn.:

Pin Tip Jack:

Material: Body – Brass per QQ-B-626, Alloy 360, ½ Hard.

Spring – Beryllium copper per QQ-C-533, Alloy 172, Cond. H.T.

Finish: Body – Same as upper conn.

Spring – Gold plated per MIL-G-45204, Type II, Class 00 over electroless nickel per MIL-C-26074,

Class 1, 200/300 microinches.

RATINGS:

Operating Temperature: +55°C. (+131°F.) Max.

Operating Voltage: 3000 VDC

Current: 5 Amperes

ORDERING INFORMATION: Model 3834-*

*=Color, -0 Black

Ordering Example: 3834-0 Adapter Color is Black. Additional colors may be quoted upon request.

All dimensions are in inches. Tolerances (except noted): .xx = ±.02" (.51 mm), .xxx = ±.005" (.127 mm).

All specifications are to the latest revisions. Specifications are subject to change without notice.

Registered trademarks are the property of their respective companies. Made in USA