



Chipsmall Limited consists of a professional team with an average of over 10 year of expertise in the distribution of electronic components. Based in Hongkong, we have already established firm and mutual-benefit business relationships with customers from,Europe,America and south Asia,supplying obsolete and hard-to-find components to meet their specific needs.

With the principle of “Quality Parts,Customers Priority,Honest Operation,and Considerate Service”,our business mainly focus on the distribution of electronic components. Line cards we deal with include Microchip,ALPS,ROHM,Xilinx,Pulse,ON,Everlight and Freescale. Main products comprise IC,Modules,Potentiometer,IC Socket,Relay,Connector.Our parts cover such applications as commercial,industrial, and automotives areas.

We are looking forward to setting up business relationship with you and hope to provide you with the best service and solution. Let us make a better world for our industry!



## Contact us

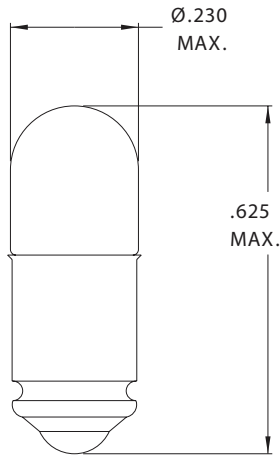
Tel: +86-755-8981 8866 Fax: +86-755-8427 6832

Email & Skype: info@chipsmall.com Web: www.chipsmall.com

Address: A1208, Overseas Decoration Building, #122 Zhenhua RD., Futian, Shenzhen, China



## T-1 3/4 Midget Groove Base



Part Number	Design Voltage	Amps	MSCP	Life Hours	Filament Type
CM698	1.35	.060	.010	500	C-6
CM266	2.50	.350	.210	10,000	C-2R
CM8699	2.50	.200	.220	500	C-2R
CM8704	2.70	.060	.040	6,000	C-2R
CM390	3.00	.015	.004	10,000	C-6
CM8849	3.00	.350	.300	10,000	C-2R
CM7345	4.50	.120	.050	25,000	C-2R
CM3152	5.00	.060	.150	5,000	C-2R
CM7346	5.00	.060	.030	60,000	C-2R
CM7347	5.00	.060	.050	25,000	C-2R
CM7348	5.00	.115	.150	40,000	C-2R
CM7350	5.00	.190	.450	1,000	C-2R
CM337	6.00	.200	.600	1,000	C-2R
CM8705	6.00	.040	.030	10,000	C-2R
CM8706	6.00	.200	.100	50,000	C-2F
CM379	6.30	.200	.400	20,000	C-2F
CM398	6.30	.200	.550	5,000	C-2R
CM7351	6.30	.040	.020	2,000	C-2V
CM7352	6.30	.150	.450	3,000	C-2R
CM8708	6.30	.070	.230	1,000	C-2R
CM397	10.0	.040	.080	5,000	C-2F
CM709	10.0	.140	.002	50,000	C-2F
CM7353	11.0	.022	.030	10,000	C-2F
CM7354	12.0	.040	.120	10,000	C-2F
CM336	14.0	.080	.500	1,500	C-2F
CM386	14.0	.080	.300	15,000	C-2F
CM393	14.0	.100	.500	10,000	C-2F
CM346	18.0	.040	.150	10,000	C-2F
CM457	22.0	.040	.300	2,000	C-2F
CM8177	24.0	.050	.500	1,000	C-2F
CM2350	28.0	.050	.700	1,000	C-2F
CM276	28.0	.060	.340	25,000	C-2F
CM334	28.0	.040	.340	4,000	C-2F
CM388	28.0	.040	.300	7,000	C-2F
CM6035	28.0	.024	.150	4,000	C-2F
CM7355	28.0	.040	.150	10,000	C-2F
CM7356	28.0	.065	.650	5,000	C-2F
CM2250	48.0	.025	.200	5,000	C-2F