



Chipsmall Limited consists of a professional team with an average of over 10 year of expertise in the distribution of electronic components. Based in Hongkong, we have already established firm and mutual-benefit business relationships with customers from,Europe,America and south Asia,supplying obsolete and hard-to-find components to meet their specific needs.

With the principle of “Quality Parts,Customers Priority,Honest Operation,and Considerate Service”,our business mainly focus on the distribution of electronic components. Line cards we deal with include Microchip,ALPS,ROHM,Xilinx,Pulse,ON,Everlight and Freescale. Main products comprise IC,Modules,Potentiometer,IC Socket,Relay,Connector.Our parts cover such applications as commercial,industrial, and automotives areas.

We are looking forward to setting up business relationship with you and hope to provide you with the best service and solution. Let us make a better world for our industry!



Contact us

Tel: +86-755-8981 8866 Fax: +86-755-8427 6832

Email & Skype: info@chipsmall.com Web: www.chipsmall.com

Address: A1208, Overseas Decoration Building, #122 Zhenhua RD., Futian, Shenzhen, China



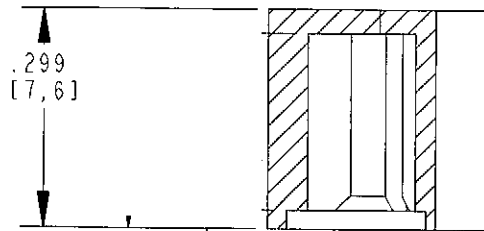
ENG112D

DWG. NO. 38HH2041-X

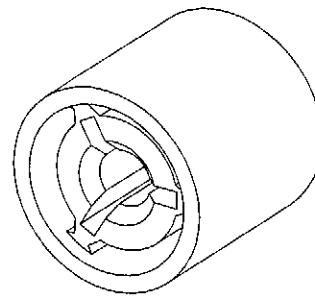
PART NUMBER COLOR SELECTION

EXAMPLE: 38HH2041-2

<u>MODEL #</u>	<u>COLOR</u>
38HH2041-	1 = WHITE
	2 = BLACK
	3 = RED
	4 = ORANGE
	5 = YELLOW
	6 = GREEN
	7 = BLUE
	8 = BROWN
	9 = GRAY



NOTES:
 1. CAPS FIT SUB-MINIATURE PUSHBUTTON SWITCHES GRAYHILL SERIES 38C,



REVISIONS	
<i>Grayhill</i>	
GRAYHILL, INC. 561 HILLGROVE AVE. LA GRANGE, IL 60525 PHONE (708) 354-1040	
UNLESS OTHERWISE SPECIFIED TOLERANCES AND DIMENSIONS ARE IN INCHES LINEAR ± REF. DIAMETERS ± REF. ANGULAR ± REF. LIMITS APPLY BEFORE FINISHING DO NOT SCALE THIS PRINT	
CRITICAL CHARACTERISTIC FLAGS PER GRAYHILL SPEC. SOP2338	
▶	-- CRITICAL CHARACTERISTIC FLAG
◯	-- Cpk REQUIRED
⊠	-- S.P.C. FLAG (CONTROL CHART REQ'D ON FEATURE SPECIFIED)
FINISH	NONE
APPROVED DATE	
PR 10-23-06	
MATERIAL	NYLON
CHECKED DATE	
CWS 10-23-06	
NAME	BUTTON CAP
DRAWN DATE	
CMC 10-23-06	
CAGE NO.	81073
	38HH2041-X
A	DWG. NO.
SIZE	38HH2041-X
	ISSUE
	A
SCALE	4.000
SHEET	1 OF 1

ALL DIMENSIONS ARE FOR REFERENCE ONLY.