



Chipsmall Limited consists of a professional team with an average of over 10 year of expertise in the distribution of electronic components. Based in Hongkong, we have already established firm and mutual-benefit business relationships with customers from,Europe,America and south Asia,supplying obsolete and hard-to-find components to meet their specific needs.

With the principle of “Quality Parts,Customers Priority,Honest Operation,and Considerate Service”,our business mainly focus on the distribution of electronic components. Line cards we deal with include Microchip,ALPS,ROHM,Xilinx,Pulse,ON,Everlight and Freescale. Main products comprise IC,Modules,Potentiometer,IC Socket,Relay,Connector.Our parts cover such applications as commercial,industrial, and automotives areas.

We are looking forward to setting up business relationship with you and hope to provide you with the best service and solution. Let us make a better world for our industry!



Contact us

Tel: +86-755-8981 8866 Fax: +86-755-8427 6832

Email & Skype: info@chipsmall.com Web: www.chipsmall.com

Address: A1208, Overseas Decoration Building, #122 Zhenhua RD., Futian, Shenzhen, China



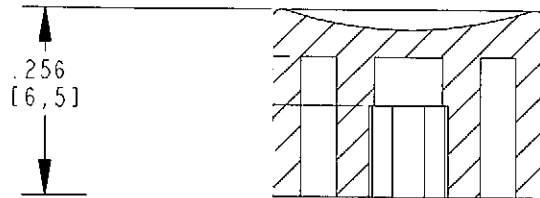
ENG112D

DWG. NO. 38HH2042-X

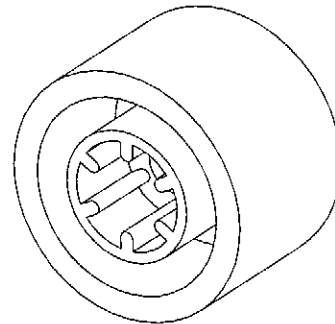
PART NUMBER COLOR SELECTION
 EXAMPLE: 38HH2042-2

MODEL #	COLOR
38HH2042-	1 = WHITE
	2 = BLACK
	3 = RED
	4 = ORANGE
	5 = YELLOW
	6 = GREEN
	7 = BLUE
	8 = BROWN
	9 = GRAY

ALL REVISIONS TO THIS DRAWING
 MUST BE MADE ON THE PRO/E SYSTEM



NOTES:
 1. CAPS FIT SUB-MINIATURE PUSHBUTTON SWITCHES GRAYHILL SERIES 38C,



ISSUE	APP/DATE	DESCRIPTION
REVISIONS		
<i>Grayhill</i>		GRAYHILL, INC. 561 HILLGROVE AVE. LA GRANGE, IL 60525 PHONE (708) 354-1040
UNLESS OTHERWISE SPECIFIED TOLERANCES AND DIMENSIONS ARE IN INCHES LINEAR ± REF. DIAMETERS ± REF. ANGULAR ± REF. LIMITS APPLY BEFORE FINISHING DO NOT SCALE THIS PRINT		
CRITICAL CHARACTERISTIC FLAGS PER GRAYHILL SPEC. SOP2338		
	--	CRITICAL CHARACTERISTIC FLAG
	--	Cpk REQUIRED
	--	S.P.C. FLAG (CONTROL CHART REQ'D ON FEATURE SPECIFIED)
FINISH	NONE	APPROVED DATE PR 10-23-06
MATERIAL	NYLON	CHECKED DATE CWS 10-23-06
NAME	BUTTON CAP	DRAWN DATE CMC 10-23-06
CAGE NO.	81073	38HH2042-X
A SIZE	DWG. NO. 38HH2042-X	ISSUE A
SCALE 4.000	SHEET	OF 1

ALL DIMENSIONS ARE FOR REFERENCE ONLY.