



Chipsmall Limited consists of a professional team with an average of over 10 year of expertise in the distribution of electronic components. Based in Hongkong, we have already established firm and mutual-benefit business relationships with customers from,Europe,America and south Asia,supplying obsolete and hard-to-find components to meet their specific needs.

With the principle of "Quality Parts,Customers Priority,Honest Operation,and Considerate Service",our business mainly focus on the distribution of electronic components. Line cards we deal with include Microchip,ALPS,ROHM,Xilinx,Pulse,ON,Everlight and Freescale. Main products comprise IC,Modules,Potentiometer,IC Socket,Relay,Connector.Our parts cover such applications as commercial,industrial, and automotives areas.

We are looking forward to setting up business relationship with you and hope to provide you with the best service and solution. Let us make a better world for our industry!



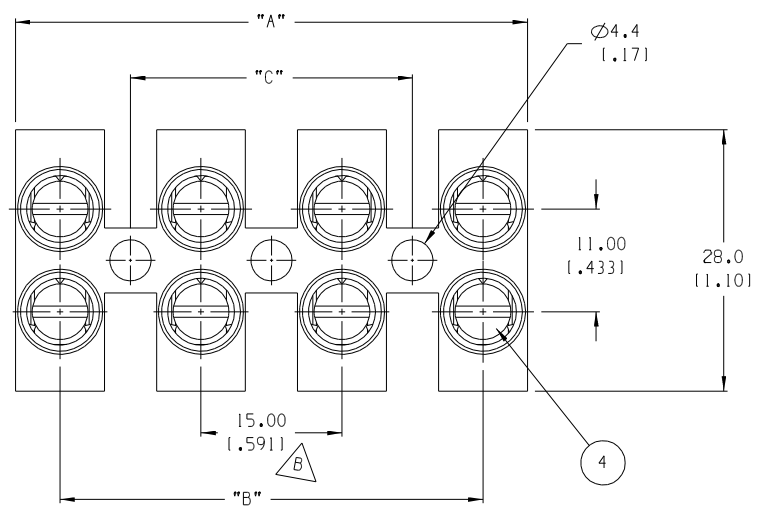
## Contact us

Tel: +86-755-8981 8866 Fax: +86-755-8427 6832

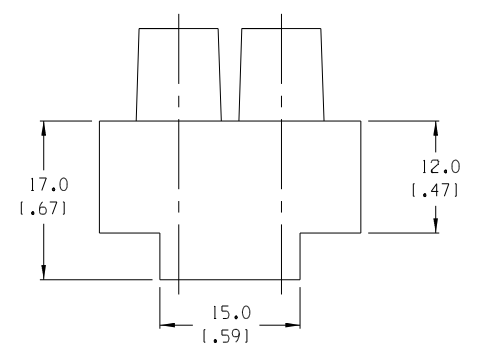
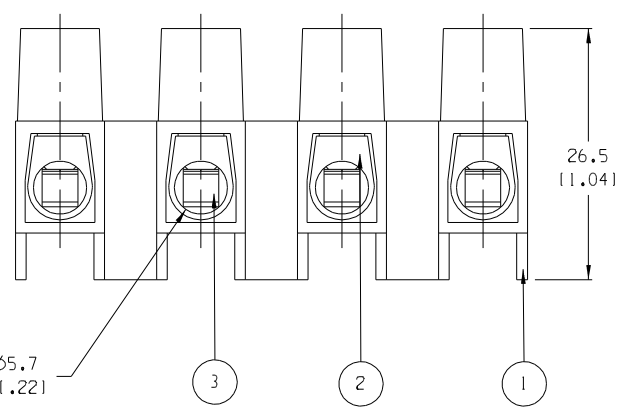
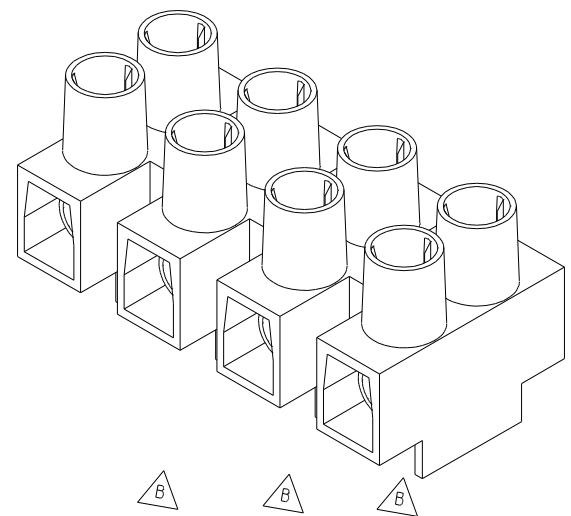
Email & Skype: info@chipsmall.com Web: www.chipsmall.com

Address: A1208, Overseas Decoration Building, #122 Zhenhua RD., Futian, Shenzhen, China





- NOTES:
1. MATERIAL: SEE TABLE
  2. FINISHES: SEE TABLE
  3. PRODUCT SPECIFICATION: NOT REQUIRED
  4. PACKAGING: NOT REQUIRED
  5. MATES WITH: NONE
  6. "XX" REFERS TO THE NUMBER OF CIRCUITS



NUMBER OF CIRCUITS	"A" DIM.	"B" DIM.	"C" DIM.	MATERIAL NUMBER
01	10.0 (1.39)	N/A	N/A	391001501
02	25.0 (1.98)	15.0 (1.59)	N/A	391001502
03	40.0 (1.57)	30.0 (1.18)	15.0 (1.59)	391001503
04	55.0 (2.17)	45.0 (1.77)	30.0 (1.18)	391001504
05	70.0 (2.76)	60.0 (2.36)	45.0 (1.77)	391001505
06	85.0 (3.35)	75.0 (2.95)	60.0 (2.36)	391001506
07	100.0 (3.94)	90.0 (3.54)	75.0 (2.95)	391001507
08	115.0 (4.53)	105.0 (4.13)	90.0 (3.54)	391001508
09	130.0 (5.12)	120.0 (4.72)	105.0 (4.13)	391001509
10	145.0 (5.71)	135.0 (5.31)	120.0 (4.72)	391001510
11	160.0 (6.30)	150.0 (5.90)	135.0 (5.31)	391001511
12	175.0 (6.89)	165.0 (6.49)	150.0 (5.90)	391001512

ITEM	QTY.	DESCRIPTION	MATERIAL	FINISH
4	XX*2	CLAMPING SCREWS, M5	STEEL	ZINC
3	XX	WIRE PROTECTOR	BRASS	NICKEL
2	XX	TERMINAL	BRASS	NICKEL
1	1	INSULATOR	NYLON 6	CLEAR

EC NO. ECN 4098 DRWG: RK 4-20-05 CH: K APPR:	QUALITY SYMBOLS MAJOR : CRITICAL : SPC : S :	GENERAL TOLERANCES: (UNLESS SPECIFIED) <table border="1"> <tr><th colspan="2">mm</th><th colspan="2">INCH</th></tr> <tr><td>4 PLACES</td><td></td><td>±.0015</td><td></td></tr> <tr><td>3 PLACES</td><td>±.038</td><td>±.005</td><td></td></tr> <tr><td>2 PLACES</td><td>±.13</td><td>±.01</td><td></td></tr> <tr><td>1 PLACE</td><td>±.3</td><td></td><td></td></tr> </table>	mm		INCH		4 PLACES		±.0015		3 PLACES	±.038	±.005		2 PLACES	±.13	±.01		1 PLACE	±.3			SCALE 2:1 DESIGN UNITS <input type="checkbox"/> mm <input checked="" type="checkbox"/> INCH THIRD ANGLE PROJECTION	DRAWN BY & DATE J. FARMER 09-17-04 CHECKED BY & DATE R. KEMP 09-17-04 APPROVED BY & DATE GHR 09-17-04	PROJECT NO. - DIMENSIONS: <input checked="" type="checkbox"/> mm <input type="checkbox"/> INCH <input type="checkbox"/> mm SHT REV REVISE ON CAD ONLY
	mm		INCH																						
	4 PLACES		±.0015																						
	3 PLACES	±.038	±.005																						
2 PLACES	±.13	±.01																							
1 PLACE	±.3																								
TITLE: 15 MM HIGH PROFILE WITH WIRE PROTECTORS		CAD FILENAME 39100-15XX		MATERIAL NO. SEE CHART																					
DRAFT WHERE APPLICABLE MUST REMAIN WITHIN DIMENSIONS		ANGULAR: ±2°		DRAWING NO. SD-39100-007																					
THIS DRAWING CONTAINS INFORMATION THAT IS PROPRIETARY TO MOLEX INCORPORATED AND SHOULD NOT BE USED WITHOUT WRITTEN PERMISSION.				SHEET NO. 1 OF 1 SIZE B																					

