



Chipsmall Limited consists of a professional team with an average of over 10 year of expertise in the distribution of electronic components. Based in Hongkong, we have already established firm and mutual-benefit business relationships with customers from,Europe,America and south Asia,supplying obsolete and hard-to-find components to meet their specific needs.

With the principle of “Quality Parts,Customers Priority,Honest Operation,and Considerate Service”,our business mainly focus on the distribution of electronic components. Line cards we deal with include Microchip,ALPS,ROHM,Xilinx,Pulse,ON,Everlight and Freescale. Main products comprise IC,Modules,Potentiometer,IC Socket,Relay,Connector.Our parts cover such applications as commercial,industrial, and automotives areas.

We are looking forward to setting up business relationship with you and hope to provide you with the best service and solution. Let us make a better world for our industry!



## Contact us

Tel: +86-755-8981 8866 Fax: +86-755-8427 6832

Email & Skype: info@chipsmall.com Web: www.chipsmall.com

Address: A1208, Overseas Decoration Building, #122 Zhenhua RD., Futian, Shenzhen, China



C. Webster 5-26-92  
 APPROVED BY/DATE

REV 1

**SAFETY ORGANIZATION(S).**  
 THIS FILTER HAS BEEN FORMALLY RECOGNIZED, CERTIFIED OR APPROVED BY THE LISTED AGENCY, THEREFORE, ALL TEST/REQUIREMENTS SPECIFIED IN THE LATEST REVISION OF THE FOLLOWING AGENCY STANDARDS HAVE BEEN MET.

- UL 544
- CSA 22.2, NO. 0.0.4.8
- VDE 565-3

- 3 AMP., 120/250 VAC
- 3 AMP./40°C, 250 VAC
- 50-60Hz
- 40°C
- 2 μA at 120V 60 Hz
- 5 μA at 250V 50 Hz
- 10°C TO +40°C @ RATED CURRENT, I<sub>r</sub>

**OPERATING SPECIFICATIONS:**  
 LINE VOLTAGE/CURRENT:

LINE FREQUENCY,  
 MAX. CASE RISE @ RATED CURRENT,  
 MAX. LEAKAGE CURRENT, EACH  
 LINE TO GROUND  
 OPERATING AMBIENT TEMP. RANGE:

IN AN AMBIENT, T<sub>o</sub>, HIGHER THAN 40°C, THE MAXIMUM OPERATING CURRENT, I<sub>o</sub>, IS AS FOLLOWS:

$$I_o = I_r \sqrt{\frac{85 - T_o}{45}}$$

**RELIABILITY SPECIFICATIONS:**

- STORAGE TEMPERATURE:  
 -40°C TO +85°C
- HUMIDITY:  
 21 DAYS @ 40°C 95% RH
- CURRENT OVERLOAD TEST:  
 6 TIMES RATED CURRENT FOR 8 SECONDS

**TEST SPECIFICATIONS:**

- INDUCTANCE:  
 1.0 mH NOMINAL
- CAPACITANCE, (MEASURED @ 1 KHz, 0.25 VAC MAX., 25°C ±1°C)  
 .01 μF ±20%
- DISCHARGE RESISTOR,  
 LINE/GROUND AND LINE/LINE  
 6000 Ω (MIN) AT 100 VDC
- INSULATION RESISTANCE  
 (W/O DISCHARGE RESISTOR)  
 20°C AND 50% RH

**RECOMMENDED RECEIVING INSPECTION HIPOT:**

- 2250 VDC FOR 1 MINUTE  
 LINES TO GROUND,
- 1450 VDC FOR 1 MINUTE  
 LINE TO LINE.

**FILTER APPROVAL:**  
 THE BEST WAY TO SELECT AND QUALIFY A FILTER IS FOR YOUR ENGINEERING TO TEST THE UNIT IN YOUR EQUIPMENT.

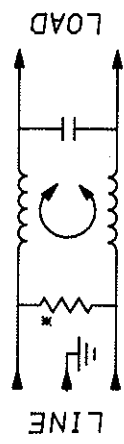
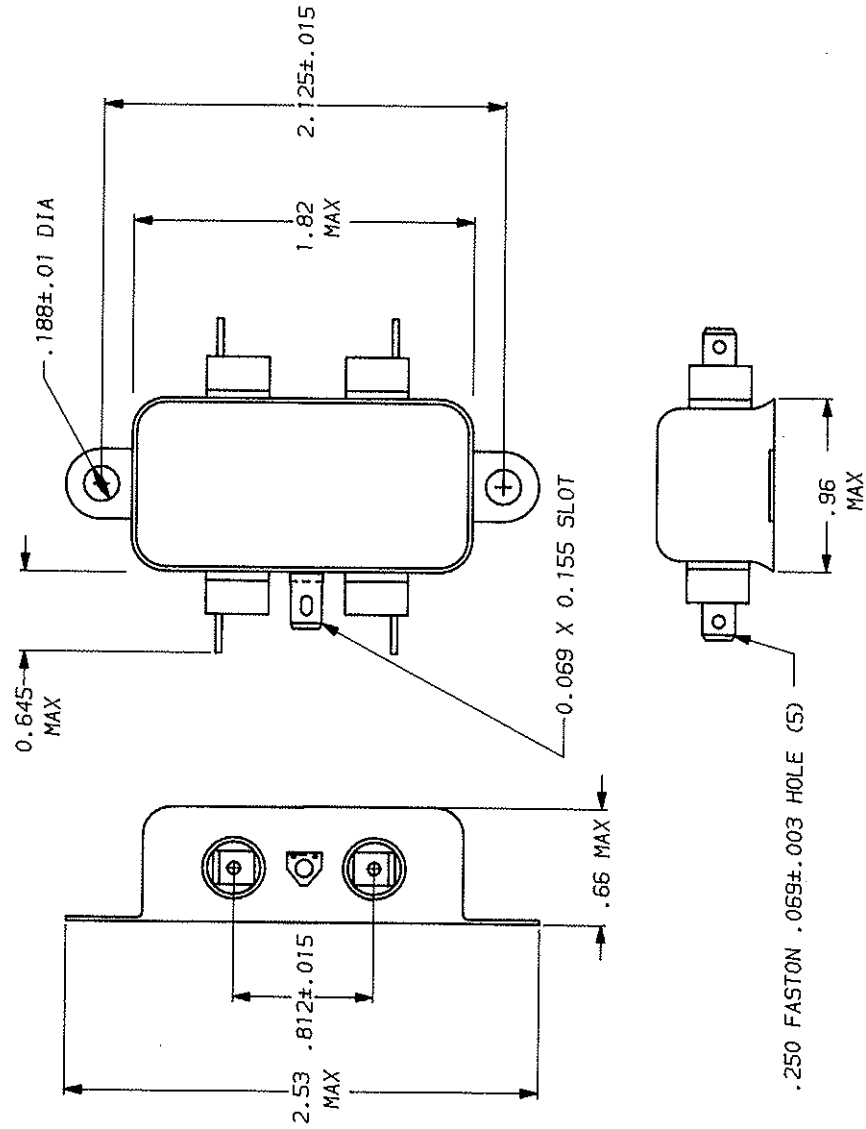
TOLERANCE EXCEPT AS NOTED

DECIMAL: .XXX .XX .X ANGLES ± 1°  
 ENGLISH: ± .025  
 METRIC: ±

MATERIAL:  
 AS SUPPLIED

FINISH:  
 AS SUPPLIED

This document is proprietary to CORCOM INC. and is not to be reproduced nor used for manufacturing purposes except on CORCOM's order or prior written consent.



FREQUENCY MHz	50Ω - 50Ω (MINIMUM) INSERTION LOSS					
	.15	.5	1	5	10	30
COMMON	18	27	30	30	27	18
dB						



POWER LINE FILTER

SCALE: NTS 9-12-89  
 DATE: 9-12-89  
 REV. NO. 3EH1.01  
 DWG. BY: TDL  
 CHECKED BY: CW

\*RESISTOR ADDED TO PRODUCT BUILT AFTER 3-30-92 (9212).