



Chipsmall Limited consists of a professional team with an average of over 10 year of expertise in the distribution of electronic components. Based in Hongkong, we have already established firm and mutual-benefit business relationships with customers from,Europe,America and south Asia,supplying obsolete and hard-to-find components to meet their specific needs.

With the principle of “Quality Parts,Customers Priority,Honest Operation,and Considerate Service”,our business mainly focus on the distribution of electronic components. Line cards we deal with include Microchip,ALPS,ROHM,Xilinx,Pulse,ON,Everlight and Freescale. Main products comprise IC,Modules,Potentiometer,IC Socket,Relay,Connector.Our parts cover such applications as commercial,industrial, and automotives areas.

We are looking forward to setting up business relationship with you and hope to provide you with the best service and solution. Let us make a better world for our industry!



Contact us

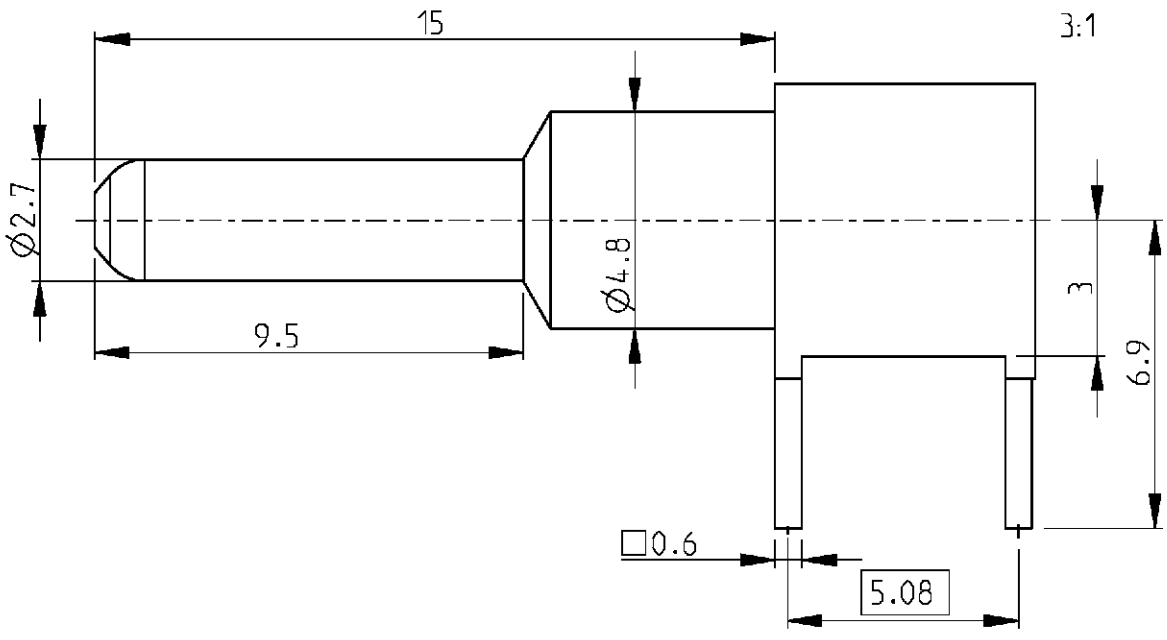
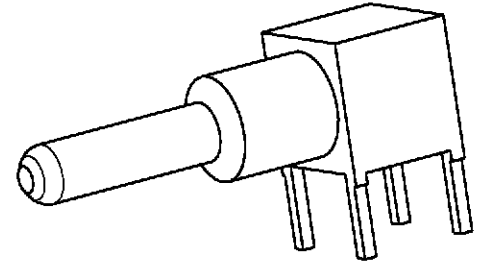
Tel: +86-755-8981 8866 Fax: +86-755-8427 6832

Email & Skype: info@chipsmall.com Web: www.chipsmall.com

Address: A1208, Overseas Decoration Building, #122 Zhenhua RD., Futian, Shenzhen, China

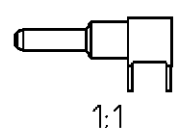


LOC	DIST	REVISIONS				
P	LTR	DESCRIPTION	DATE	DWN	APVD	
GW	-	A	-	26APR2001	BL KM	



1) All dimensions are maximum unless otherwise specified.

Cross reference table			
Old part number	Tyco part number	Material	Plating
V23648-A21-B7	4-1393589-0	Brass	1 μm Au or Pd in contact area



2000

THIS DRAWING IS UNPUBLISHED. BY TYCO ELECTRONICS CORPORATION. ALL RIGHTS RESERVED. © COPYRIGHT 2000

DIMENSIONS: mm	DWN B. Lenvain	26APR2001	MATERIAL	FINISH
	CHK K. Mattheeuws	26APR2001	Tyco Electronics Oostkamp - Belgium	
TOLERANCES UNLESS OTHERWISE SPECIFIED:	APVD R. Leeman	26APR2001		
0 PLC ±	PRODUCT SPEC	-	SIZE	CAGE CODE
1 PLC ±	-	-	A 4	00779
2 PLC ±	APPLICATION SPEC	-	DRAWING NO	RESTRICTED TO
3 PLC ±	-	-	©=4-1393589-0	-
4 PLC ±	WEIGHT	-	CUSTOMER DRAWING	
ANGLES ±	-	-	SCALE	SHEET
	-	-	6/1	1 OF 1
				REV A