



Chipsmall Limited consists of a professional team with an average of over 10 year of expertise in the distribution of electronic components. Based in Hongkong, we have already established firm and mutual-benefit business relationships with customers from,Europe,America and south Asia,supplying obsolete and hard-to-find components to meet their specific needs.

With the principle of “Quality Parts,Customers Priority,Honest Operation,and Considerate Service”,our business mainly focus on the distribution of electronic components. Line cards we deal with include Microchip,ALPS,ROHM,Xilinx,Pulse,ON,Everlight and Freescale. Main products comprise IC,Modules,Potentiometer,IC Socket,Relay,Connector.Our parts cover such applications as commercial,industrial, and automotives areas.

We are looking forward to setting up business relationship with you and hope to provide you with the best service and solution. Let us make a better world for our industry!



Contact us

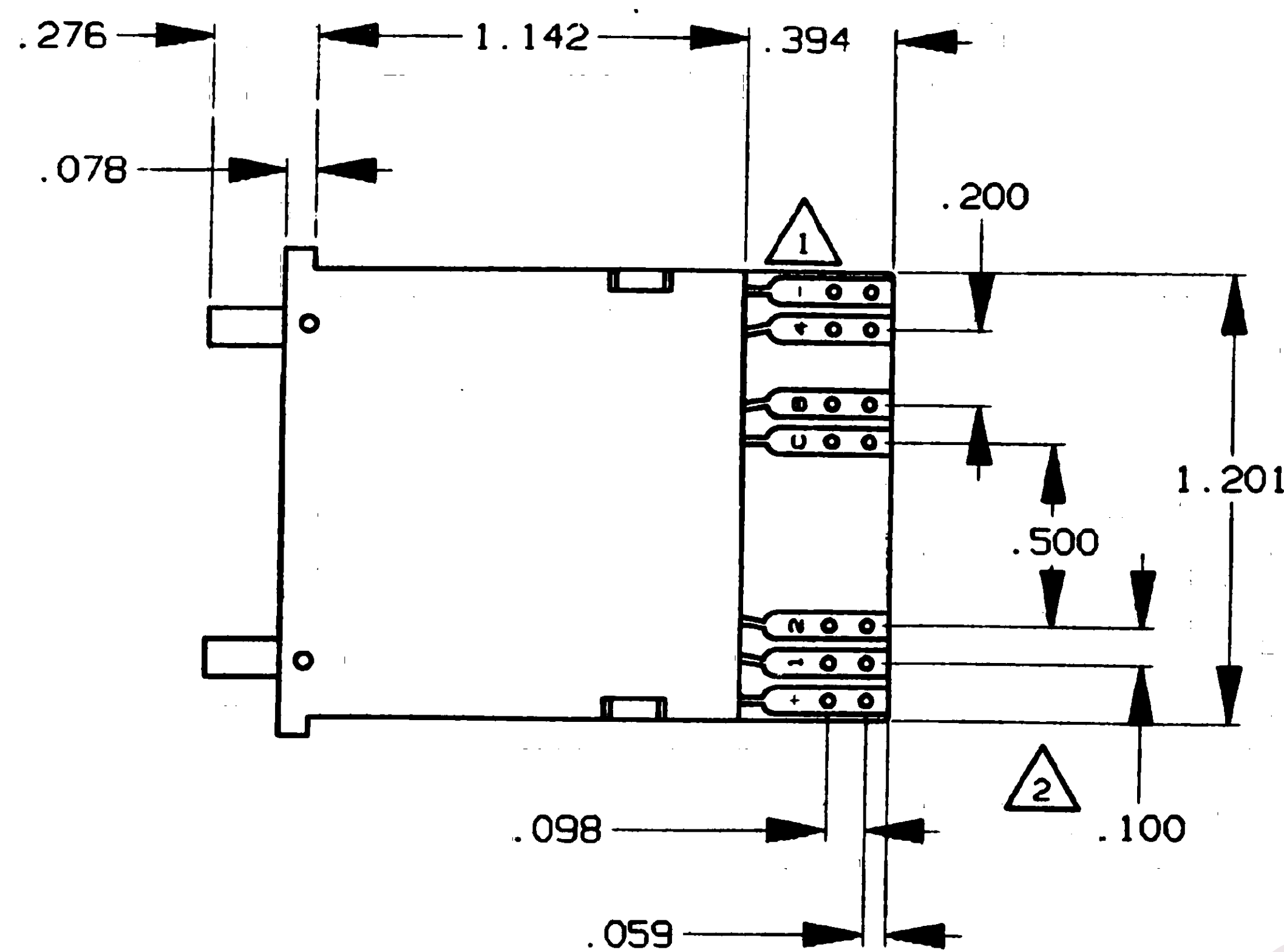
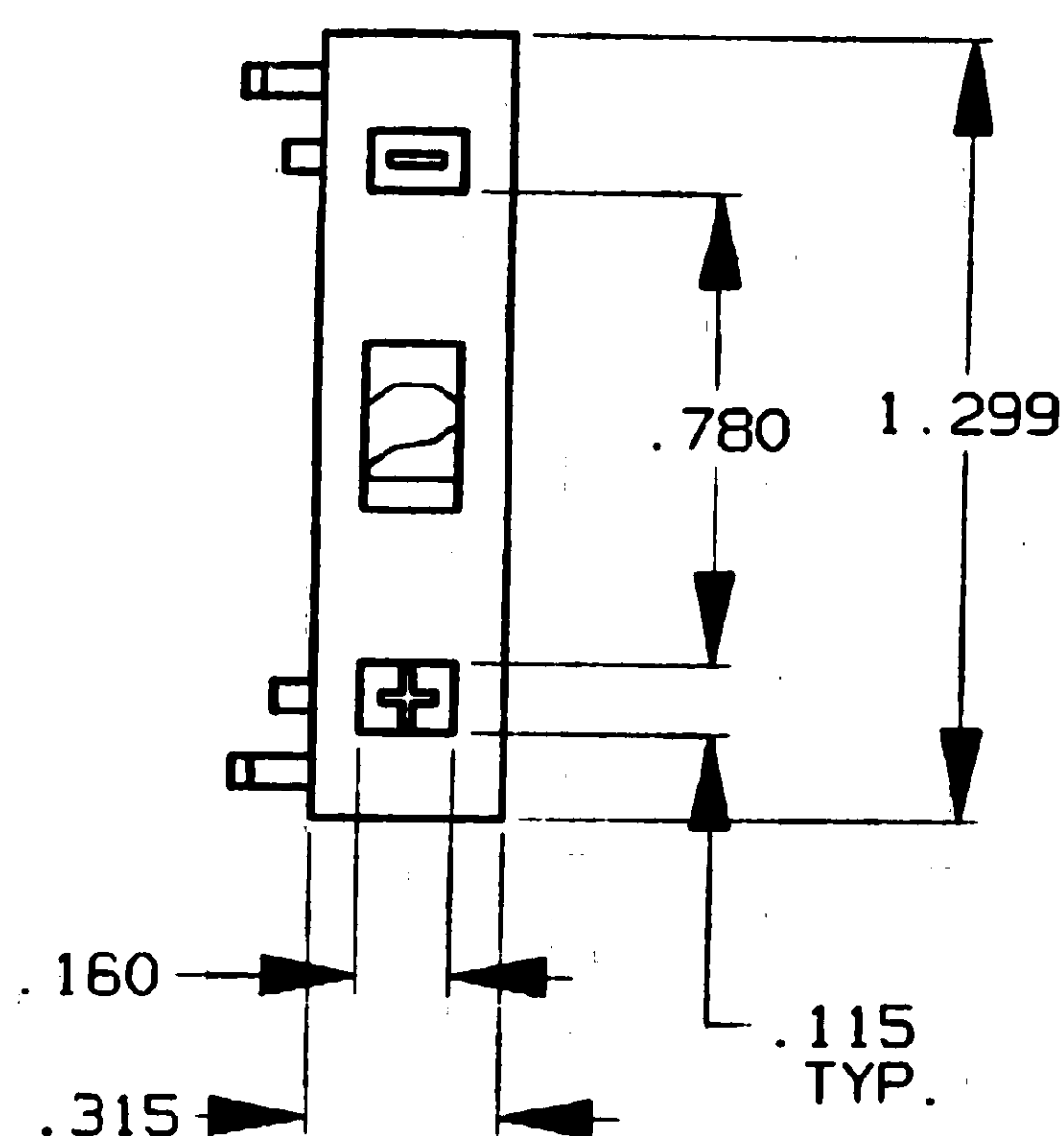
Tel: +86-755-8981 8866 Fax: +86-755-8427 6832

Email & Skype: info@chipsmall.com Web: www.chipsmall.com

Address: A1208, Overseas Decoration Building, #122 Zhenhua RD., Futian, Shenzhen, China



CONVERSION CHART	
INCH	MM
.010	0.25
.024	0.60
.030	0.75
.039	1.00
.045	1.14
.078	2.00
.100	2.54
.115	2.92
.160	4.06
.169	4.30
.200	5.08
.270	6.85
.276	7.00
.315	8.00
.394	10.00
.500	12.70
.780	19.81
1.142	29.00
1.201	30.50
1.299	33.00



SPECIFICATIONS:

- CONTACT RATING: 0.4VA @ 20 VDC OR PEAK AC.
- CONTACT RESISTANCE: 100 MILLIOHMS MAX.
- MECHANICAL LIFE: MORE THAN 10⁶ OPERATIONS.
- OPERATING TEMPERATURE: -10°C TO +60°C.
- MATERIALS:
HOUSING: NORYL SE-1.
COLOR: BLACK, MATTE FINISH.
P.C. BOARD: GLASS EPOXY
WIPING CONTACT: Au OVER Ni ON CuSn6.
- CHARACTER HEIGHT/COLOR: .169 in. (4.30 mm)
WHITE ON BLACK BACKGROUND.

NOTE:

- DPS9SG902 DOES NOT HAVE SOLDER PINS.
- ASSEMBLED PARTS TO BE PACKAGED FOR SHIPMENT IN ITEMS ANTISTATIC TREATED TO MEET THE REQUIREMENTS OF AUGAT SPECIFICATION NO. SPEC 224.

DIAL POSITION	DIAL MARKING *				
	NO LETTER	C	D	E	F
0	0	(STOP)	(STOP)	0	(STOP)
1	1	1	1	1	1
2	2	2	2	2	2
3	3	3	3	3	3
4	4	4	4	4	4
5	5	5	5	5	5
6	6	6	6	6	6
7	7	(STOP)	7	7	7
8	8		8	8	8
9	9		9	9	9
10	10		10	△	10
11	11		11	X	11
12	12		12	(STOP)	(STOP)
13	13		13		
14	14		14		
15	15		15	(STOP)	

DIAL POSITION	HEXIDECIMAL CODE				
	C	1	2	4	8
0	X				
1	X	X			
2	X		X		
3	X	X	X		
4	X			X	
5	X	X		X	
6	X		X	X	
7	X	X	X	X	
8	X				X
9	X	X			X
10	X		X		X
11	X	X	X		X
12	X			X	X
13	X	X		X	X
14	X		X	X	X
15	X	X	X	X	X

THIS IS A C.A.D. GENERATED DRAWING
DO NOT MAKE MANUAL REVISIONS TO MASTER.

REV	REVISIONS
A	INITIAL RELEASE ESP# 3361-89 CMM 12-26-89 APP'D: PB 12-26-89
0	REVISED ECO# 474-92 CMM 5-5-92 APP'D: DS 5-5-92
1	REVISED & REDRAWN ECO# 634-94 S.K. RICHMAN 8-4-94 APP'D: SOC
2	REVISED & REDRAWN ECO# 108461 SOC 7-7-98 APP'D: 1/4/98



THIRD ANGLE
PROJECTION

TOLERANCES (EXCEPT AS NOTED)
ANGULAR ± 1°
DECIMAL .XX ± .01
DECIMAL .XXX ± .010
DECIMAL .XXXX ± .005

AUGAT CONFIDENTIAL
This document contains information
which is the exclusive property of
Augat Inc.
Distribution, reproduction or use by
others is not permitted without the
expressed written consent of Augat
Inc.

UNLESS OTHERWISE SPECIFIED
DIMENSIONS ARE IN INCHES
DO NOT SCALE PRINT

FILE NAME: 80923SOC
DIRECTORY: PSHSWTCH

MATERIAL:
SEE ABOVE

FINISH:
SEE ABOVE

ORIGINAL DATE
OF DRAWING: 12-26-89

DRAWN: CMM
DATE: 12-26-89

CHECKED: TH
DATE: 12-29-89

APPROVED: PB
DATE: 12-29-89

CODE IDENT NO.
91506

DWG. SIZE
C

NEXT ASSY:

AUGAT®
INC.

452 JOHN DIETSCH BLVD.
ATTLEBORO FALLS, MASS. 02763

TITLE:
CODE SWITCH,
PUSHWHEEL DPS9SG902*

DWG. NO.
80923

REV.
2

PRODUCT CODE: HT3

SCALE: 2:1
SHEET 1 OF 1