



Chipsmall Limited consists of a professional team with an average of over 10 year of expertise in the distribution of electronic components. Based in Hongkong, we have already established firm and mutual-benefit business relationships with customers from,Europe,America and south Asia,supplying obsolete and hard-to-find components to meet their specific needs.

With the principle of “Quality Parts,Customers Priority,Honest Operation,and Considerate Service”,our business mainly focus on the distribution of electronic components. Line cards we deal with include Microchip,ALPS,ROHM,Xilinx,Pulse,ON,Everlight and Freescale. Main products comprise IC,Modules,Potentiometer,IC Socket,Relay,Connector.Our parts cover such applications as commercial,industrial, and automotives areas.

We are looking forward to setting up business relationship with you and hope to provide you with the best service and solution. Let us make a better world for our industry!



Contact us

Tel: +86-755-8981 8866 Fax: +86-755-8427 6832

Email & Skype: info@chipsmall.com Web: www.chipsmall.com

Address: A1208, Overseas Decoration Building, #122 Zhenhua RD., Futian, Shenzhen, China



DWG NO
C-4-1579008-6

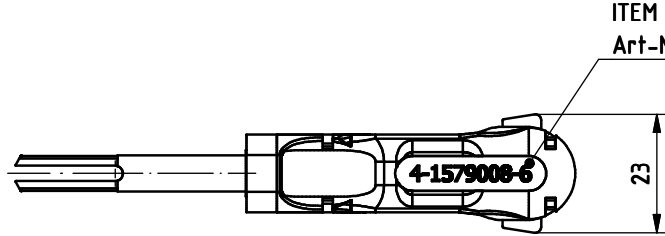
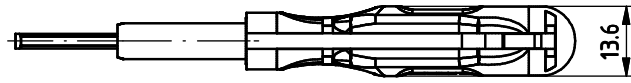
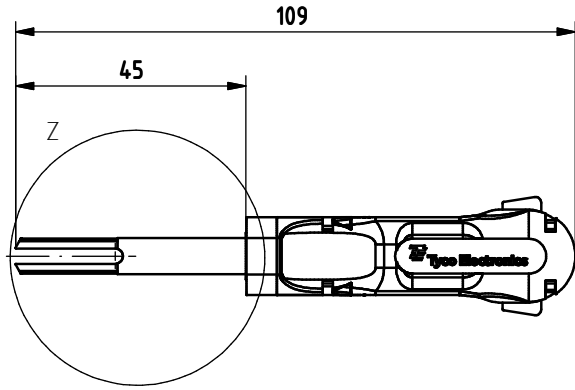
THIS DRAWING IS A CONTROLLED DOCUMENT FOR THE MANUFACTURING ORGANIZATION AND THE CONTROLLING ORGANIZATION SHOULD BE CONTACTED FOR THE LATEST REVISION.

DIESER ZEICHNUNGSDOKUMENT WIRD DURCH AMP INCORPORATED KONTROLLIERT. ANDERN WERDEN DIE DMIT TECHNISCHEN FORTSCHRITTE BEZÜGLICH DER KONSTRUKTION UND DER KONTROLLEURORGANISATION SOLLTEN MIT DEN KONTROLLEURORGANISATIONEN KONTAKTIERT WERDEN FÜR DIE LETZTE REVISION.

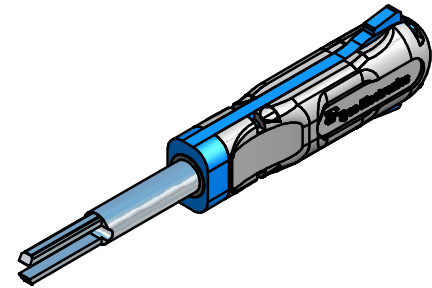
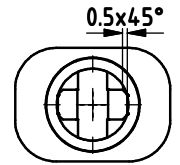
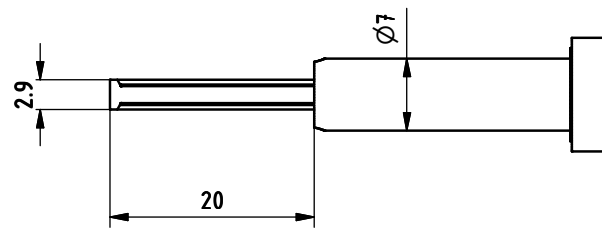
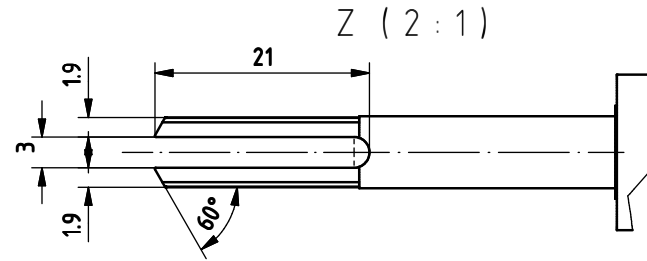
THIS INFORMATION IS CONFIDENTIAL AND IS DISCLOSED TO YOU BY YOU OR OTHER TYPING AND PERSONNEL WITHOUT WRITTEN AUTHORIZATION FROM AMP INCORPORATED. © 2022 AMP AMP 3306-7 REV 23FEB95

PASSMASS	ABMASS

PROJECT NO.: _____ USED ON _____



ITEM NUMBER
Art-Nr. H=3mm



PREMÄSSSTOLERANZEN NACH DIN 7168 (WERTE IN mm)
1) ABWEICHEND VON DIN 7168 2) LÄNGE DES KÜRZEREN SCHENKELS

NENNMASS	ÜBER	0,5	3	6	30	120	400
BEREICH 1)	SIS	±2	±6	±20	±120	±400	±1000
LÄNGEN							
BEREICH 2)		±0,1	±0,2	±0,3	±0,5	±0,8	±1,2
MASSE							
MITTEL		±0,1	±0,1	±0,2	±0,3	±0,5	±0,8
RADIEN U. FASEN		±0,2	±0,5	±1	±2	±4	±4
WINKELABMASSE 1) 2)							
±1'		±1'	±30'	±20'	±10'	±5'	

GENERAL TOLERANCES ACC. TO DIN 7168 (VALUES IN mm)
1) DEVIATING FROM DIN 7168 2) LENGTH OF SHORT ANGLE SIDE

Gewicht / Weight in Kg
0,019

TEIL IM BEREICH X... MIT PN-STRICH-NR. (1 WIE GEZ.).
REVISION STAND UND LIEFERANTENSYMBOL GEKENNZEICHNET
PART TO BE MARKED WITH PN-DASH NO. (1 AS SHOWN).
REV. STATUS AND VENDORS MARK IN AREA X...

OBERFLÄCHENVERGLEICHSTABELLE				BOHRGR.
DIN 3141	R3			DIN 9138
R _a in µm	6,3	1,6	0,4	12,5
DIN ISO 1300				

ALLE UNBEMASSTE KANTEN 0.2x45° ENTGRATET
REMOVE BURRS. BREAK SHARP EDGES 0.2x45°

LOC	A1	DIST	B	ECR-09-006286	17.03.2009	Sams G.S.	P	LTR	REVISION RECORD	DATE	DWN	APVD

FINISH

DIMENSIONS: mm

TOLERANCES UNLESS OTHERWISE SPECIFIED:
n. ISO 2815
n. ISO 2768
n. DIN 16901 - M-H-E 140

0 PLC ±
1 PLC ±
2 PLC ±
3 PLC ±
4 PLC ±

ANGLES:

SURFACE TEXTURE

DWN	17.03.2009 S. Samstag	MATERIAL	HEAT TREAT
CHK			
APVD		Tyco Electronics Tyco Electronics AMP GmbH 64625 Bensheim (Germany)	
NAME	EXTRACTION TOOL Entriegelungswerkzeug		
SCALE	1:1	SIZE	A3
DRAWING NO	C-4-1579008-6	SHEET	1 OF 1
REV	B		

8

7

6

5

4

3

2

1

D

C

B

A