



Chipsmall Limited consists of a professional team with an average of over 10 year of expertise in the distribution of electronic components. Based in Hongkong, we have already established firm and mutual-benefit business relationships with customers from,Europe,America and south Asia,supplying obsolete and hard-to-find components to meet their specific needs.

With the principle of “Quality Parts,Customers Priority,Honest Operation,and Considerate Service”,our business mainly focus on the distribution of electronic components. Line cards we deal with include Microchip,ALPS,ROHM,Xilinx,Pulse,ON,Everlight and Freescale. Main products comprise IC,Modules,Potentiometer,IC Socket,Relay,Connector.Our parts cover such applications as commercial,industrial, and automotives areas.

We are looking forward to setting up business relationship with you and hope to provide you with the best service and solution. Let us make a better world for our industry!



Contact us

Tel: +86-755-8981 8866 Fax: +86-755-8427 6832

Email & Skype: info@chipsmall.com Web: www.chipsmall.com

Address: A1208, Overseas Decoration Building, #122 Zhenhua RD., Futian, Shenzhen, China



THIS DRAWING IS UNPUBLISHED.

RELEASED FOR PUBLICATION

AUG ,2006.

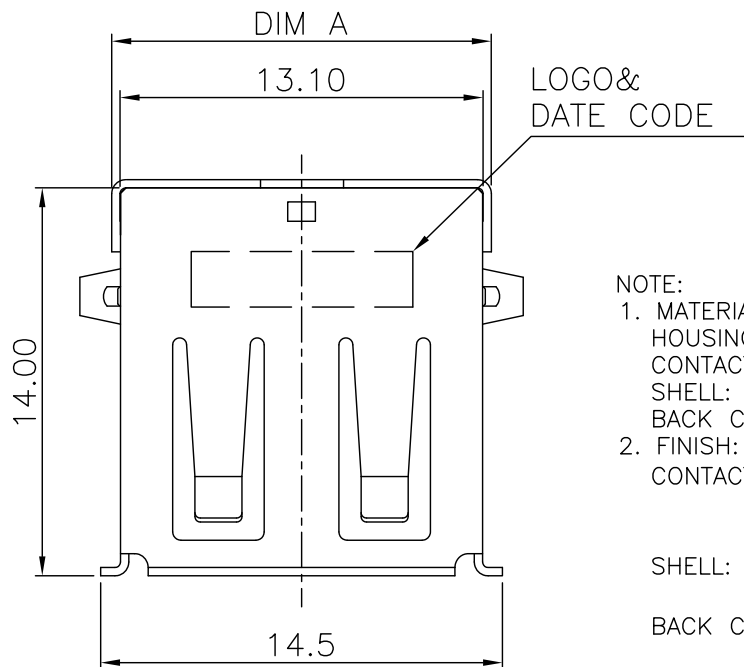
© COPYRIGHT 2009 BY TYCO ELECTRONICS CORPORATION. ALL RIGHTS RESERVED.

LOC DW

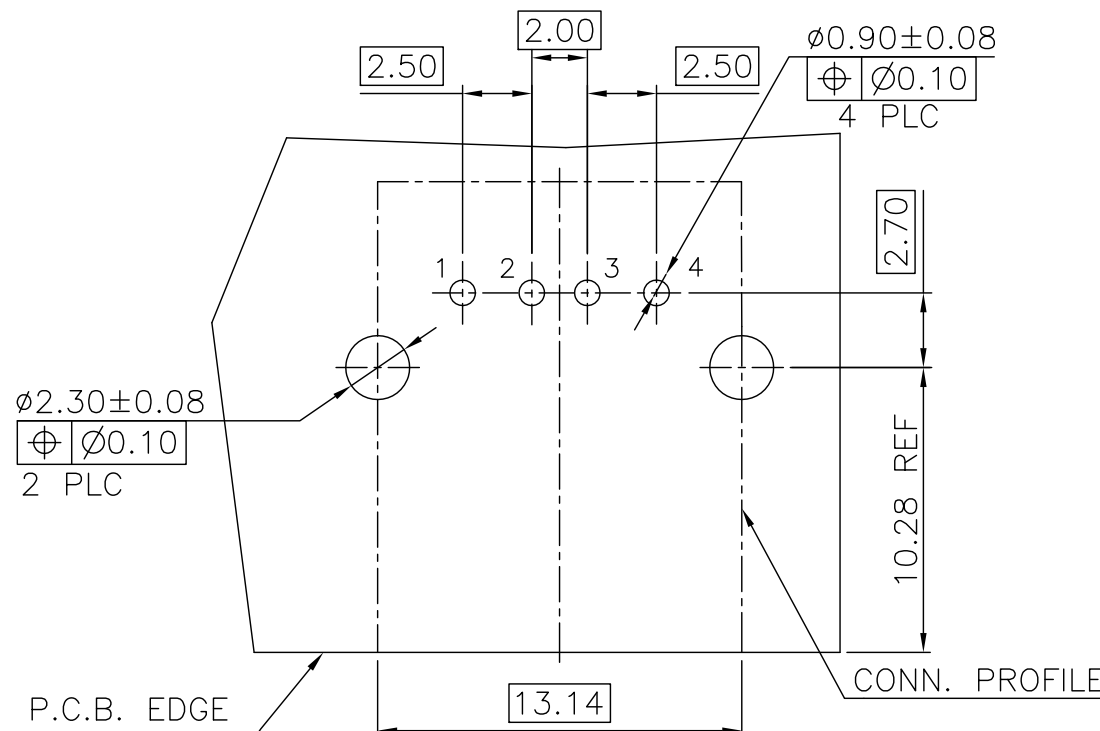
DIST

REVISIONS

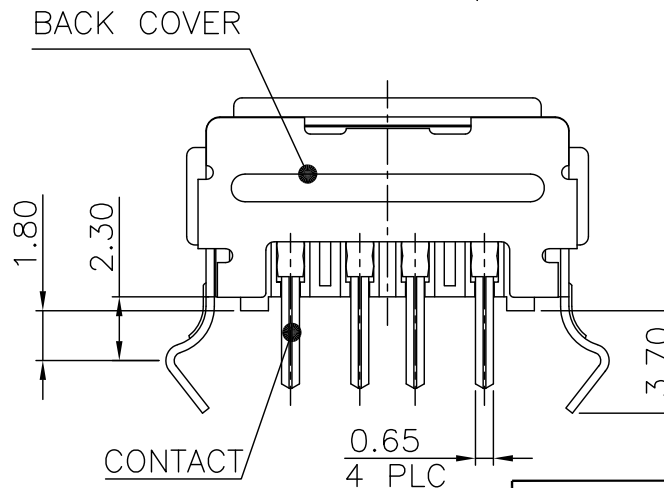
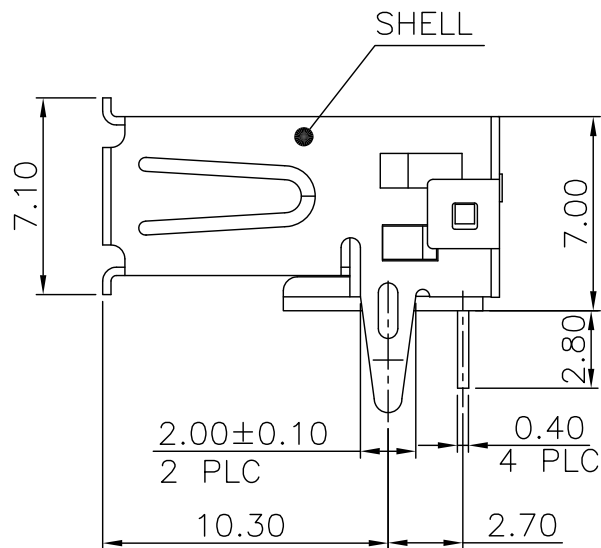
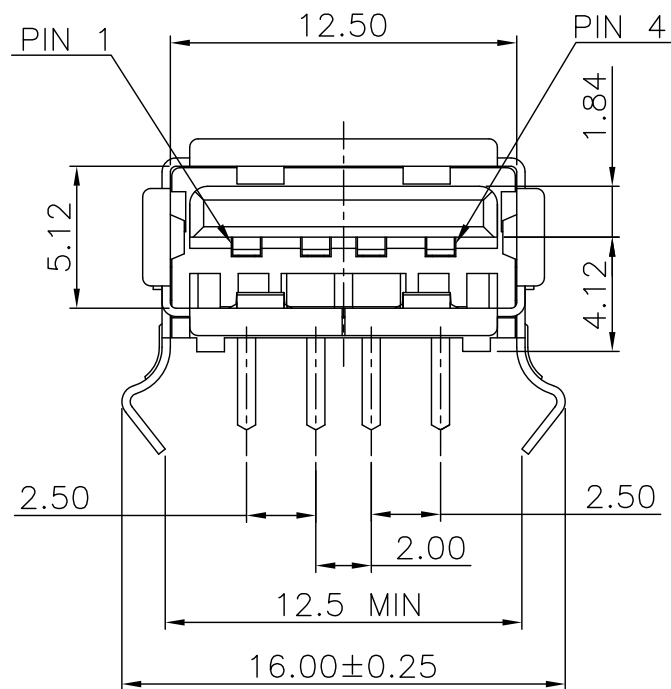
P	LTR	DESCRIPTION	DATE	DWN	APVD
E5		REVISED (ECR-13-016508)	23JAN14	BW	SC




- NOTE:
- MATERIAL:
HOUSING: PA9T WITH 30%GF, UL94V-0, BLACK COLOR.
CONTACT: PHOSPHOR BRONZE.
SHELL: BRASS.
BACK COVER: BRASS.
 - FINISH:
CONTACT: 0.762μm [30μ"] MIN. GOLD PLATING ON CONTACT AREA.
3.048μm [120μ"] MIN. BRIGHT TIN PLATING ON SOLDER TAILS.
1.27μm [50μ"] MIN. NICKEL UNDERPLATING OVERALL.
SHELL: 0.762μm [30μ"] MIN. NICKEL PLATED OVER
0.762μm [30μ"] MIN. Cu UNDERPLATING OVERALL.
BACK COVER: 0.762μm [30μ"] MIN. NICKEL PLATED OVER
0.762μm [30μ"] MIN. Cu UNDERPLATING OVERALL.
 - REFLOW SOLDER CAPABLE TO 260°C PER TE SPEC 109-201, CONDITION B.



RECOMMEND P.C.B LAYOUT (THICKNESS=1.6mm)
(COMPONENT SIDE) TOLERANCE±0.05



OBSELETE	NA	W/O	TRAY	1734081-2
	13.7	W/	TRAY	1734081-1
DIM.A	BACK COVER	PACKAGE	PART NUMBER	

THIS DRAWING IS A CONTROLLED DOCUMENT.		DWN O. HU 21SEP2004	 TE Connectivity	
DIMENSIONS: MM		CHK S. HSU 21SEP2004		
TOLERANCES UNLESS OTHERWISE SPECIFIED:		APVD W.J. KE 21SEP2004	NAME	
0 PLC ± - 1 PLC ± 0.35 2 PLC ± 0.25 3 PLC ± 0.15 4 PLC ± - ANGLES ± 3°		PRODUCT SPEC 108-57505	USB CONNECTOR, RECEPTACLE 4 POSITION, SERIES A	
MATERIAL SEE NOTE		FINISH SEE NOTE	APPLICATION SPEC 501-57579	RESTRICTED TO
		WEIGHT 2.01 GRAMS	SIZE A3	CAGE CODE 00779
		CUSTOMER DRAWING	DRAWING NO C=1734081	SCALE
			SHEET 1 OF 19	REV E5

THIS DRAWING IS UNPUBLISHED.

RELEASED FOR PUBLICATION

AUG ,2006.

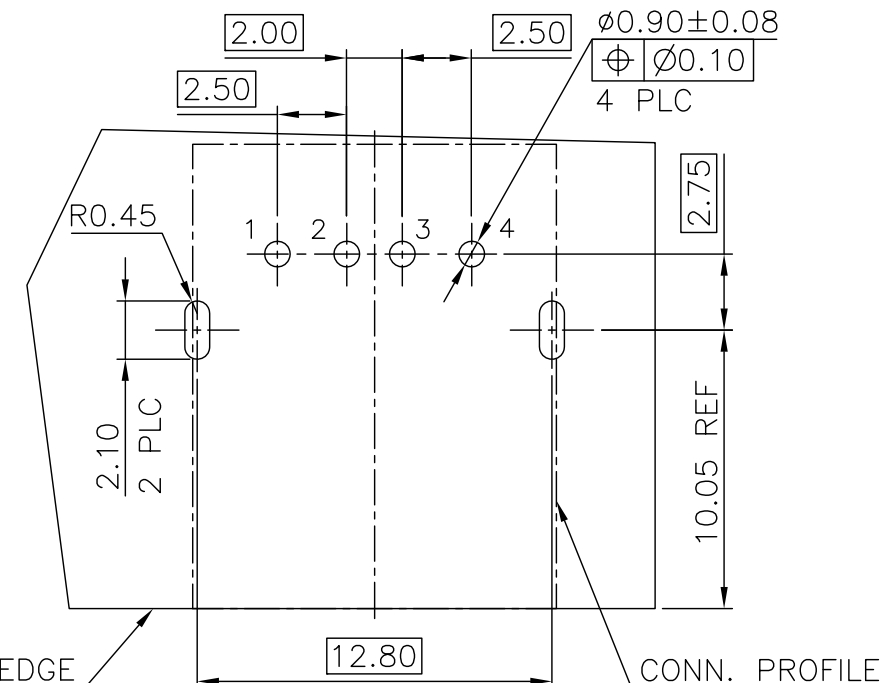
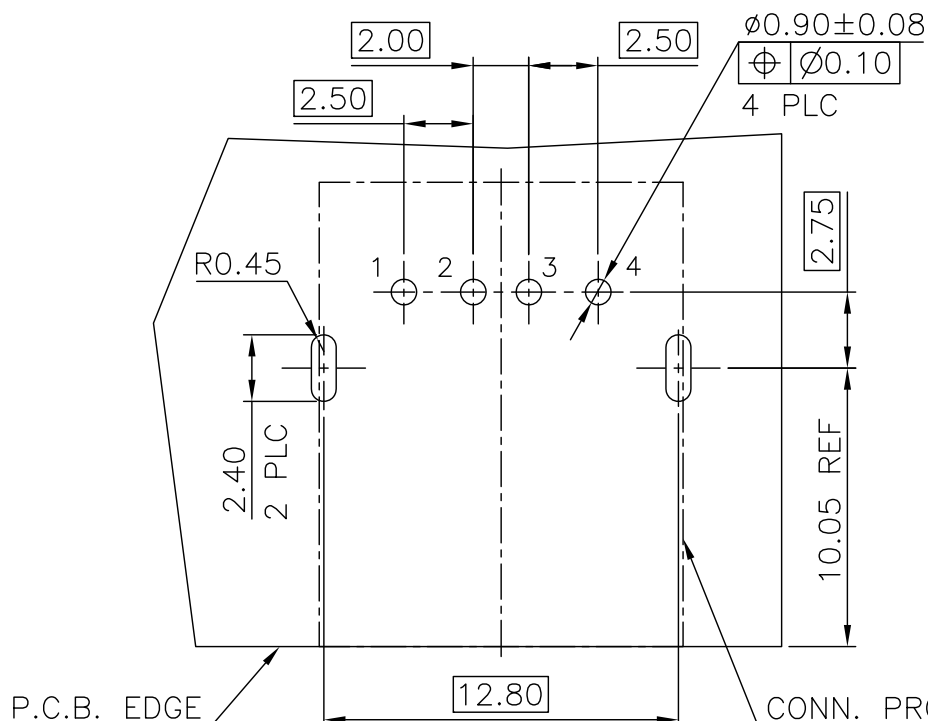
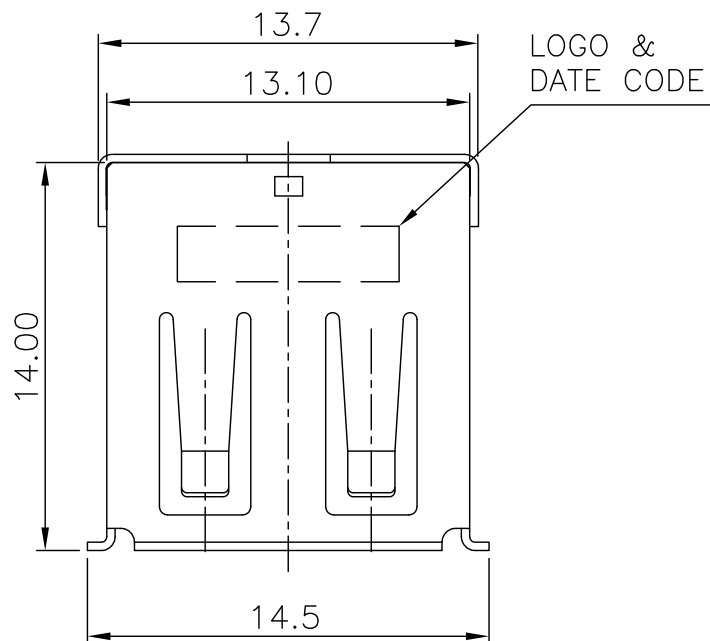
© COPYRIGHT 2009 BY TYCO ELECTRONICS CORPORATION. ALL RIGHTS RESERVED.

LOC DW

DIST

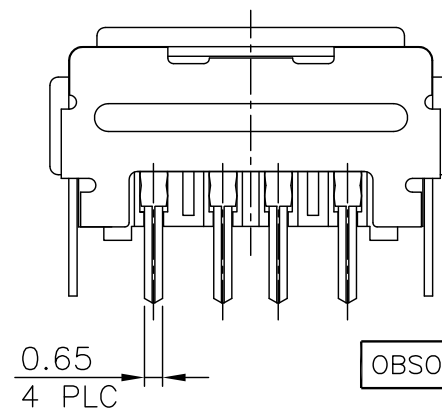
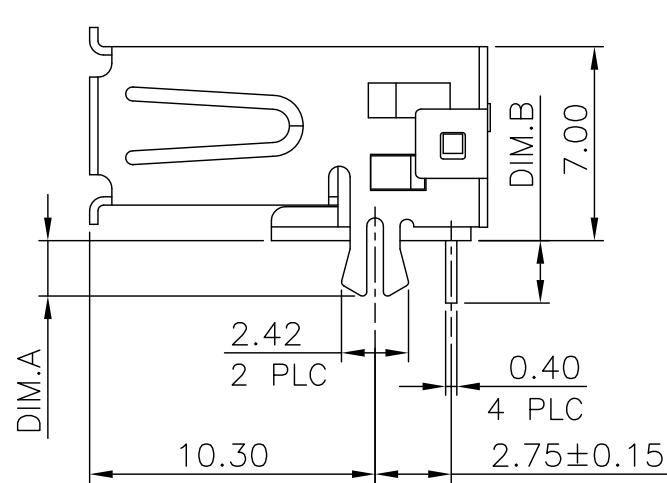
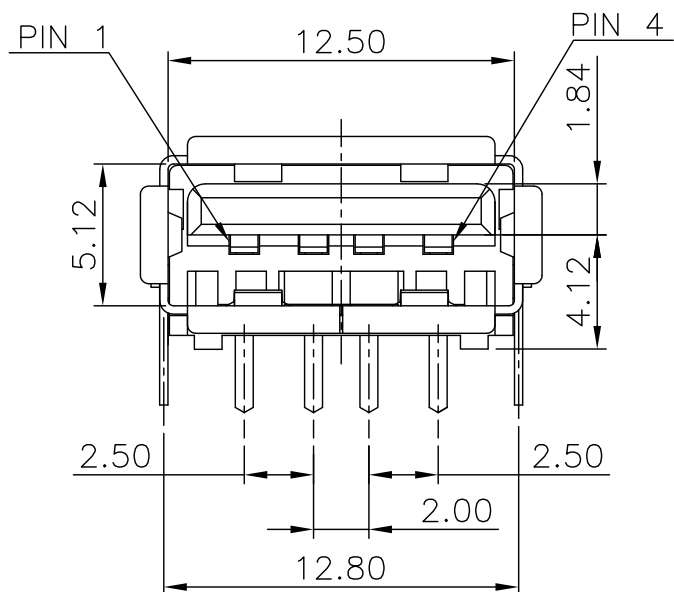
REVISIONS

P	LTR	DESCRIPTION	DATE	DWN	APVD
		SEE SHEET 1.			



RECOMMEND P.C.B LAYOUT (THICKNESS=1.6mm)
(COMPONENT SIDE) TOLERANCE±0.05 FOR DIM.A=2.4

RECOMMEND P.C.B LAYOUT (THICKNESS=1.4~1.6mm)
(COMPONENT SIDE) TOLERANCE±0.05 FOR DIM.A=2.0



OBSOLETE	△ PA-46	MOON GRAY	2.0	2.25	T&R	1-1734081-4
			2.4	2.25	T&R	1-1734081-3
OBSOLETE	△ PA-9T	BLACK	2.0	1.5	T&R	1-1734081-5
				2.25	T&R	1-1734081-2
					TRAY	1-1734081-1
	HSG. MATERIAL	HSG. COLOR	DIM A	DIM B	PACKAGE	PART NUMBER

NOTE:
 1. MATERIAL:
 HOUSING: THERMOPLASTIC (SEE TABLE) WITH 30%GF, UL94V-0, BLACK COLOR.
 CONTACT: PHOSPHOR BRONZE.
 SHELL: BRASS.
 BACK COVER: BRASS.
 2. FINISH:
 CONTACT: 0.762µm [30µ"] MIN. GOLD PLATING ON CONTACT AREA,
 3.048µm [120µ"] MIN. BRIGHT TIN PLATING ON SOLDER TAILS.
 1.27µm [50µ"] MIN. NICKEL UNDERPLATING OVERALL.
 SHELL: 0.762µm [30µ"] MIN. NICKEL PLATED OVER
 0.762µm [30µ"] MIN. Cu UNDERPLATING OVERALL.
 BACK COVER: 0.762µm [30µ"] MIN. NICKEL PLATED OVER
 0.762µm [30µ"] MIN. Cu UNDERPLATING OVERALL.
 △ REFLOW SOLDER CAPABLE TO 245°C PER TE SPEC 109-201, CONDITION A.
 △ REFLOW SOLDER CAPABLE TO 260°C PER TE SPEC 109-201, CONDITION B.

THIS DRAWING IS A CONTROLLED DOCUMENT.		DWN		TE Connectivity	
DIMENSIONS: MM		CHK			
TOLERANCES UNLESS OTHERWISE SPECIFIED:		APVD		NAME	
0 PLC ± - 1 PLC ± 0.35 2 PLC ± 0.25 3 PLC ± 0.15 4 PLC ± - ANGLES ± 3'		PRODUCT SPEC		USB CONNECTOR, RECEPTACLE 4 POSITION, SERIES A	
MATERIAL SEE NOTE		FINISH SEE NOTE		RESTRICTED TO	
		WEIGHT 2.01 GRAMS		SIZE A3	
		CUSTOMER DRAWING		CAGE CODE 00779	
				DRAWING NO C=1734081	
				SCALE - SHEET 2 OF 19 REV E5	

THIS DRAWING IS UNPUBLISHED.

RELEASED FOR PUBLICATION

AUG ,2006.

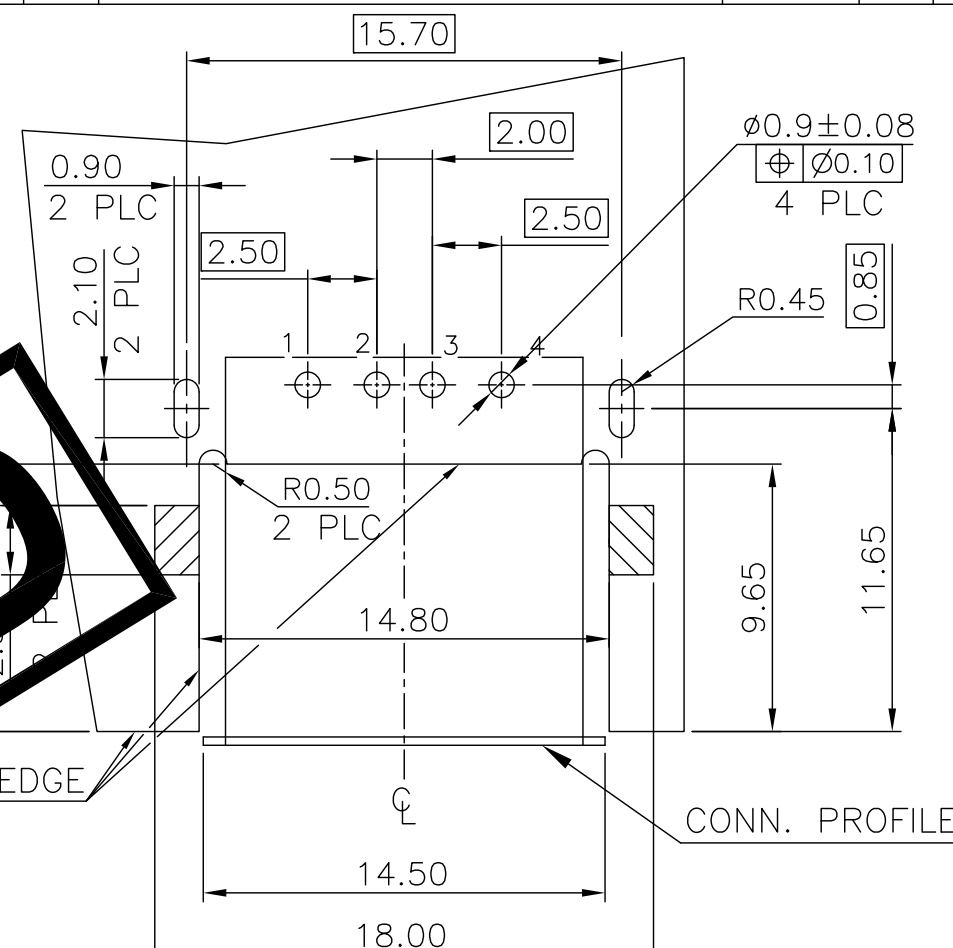
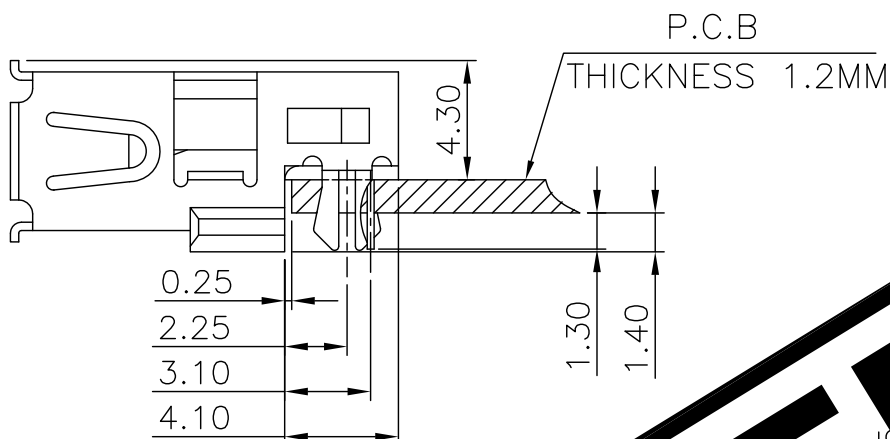
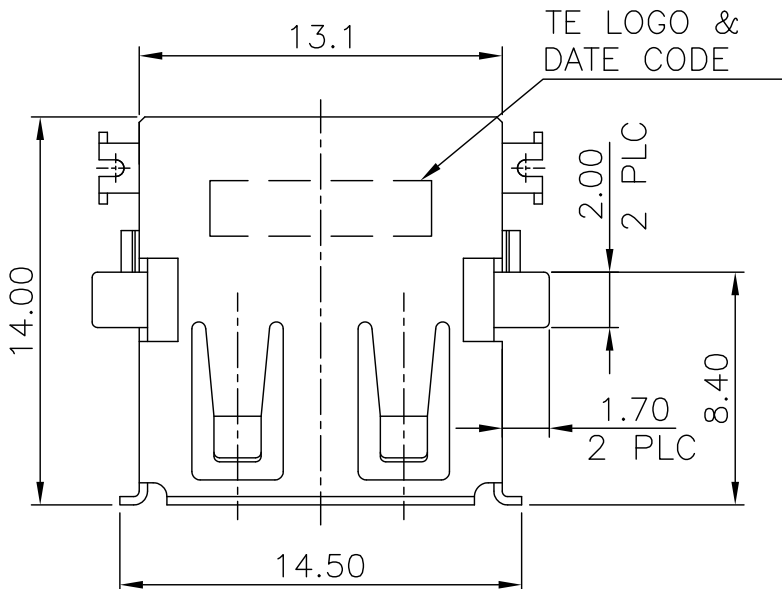
© COPYRIGHT 2009 BY TYCO ELECTRONICS CORPORATION. ALL RIGHTS RESERVED.

LOC DW

DIST

REVISIONS

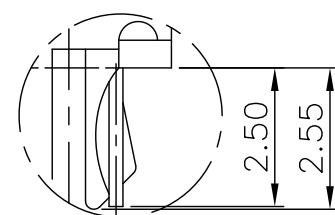
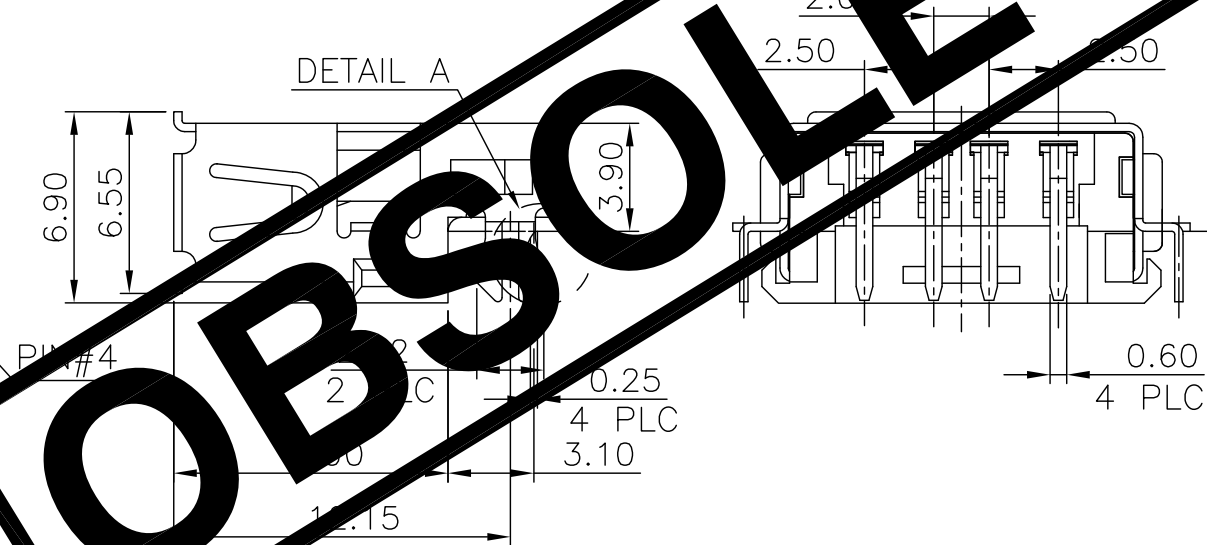
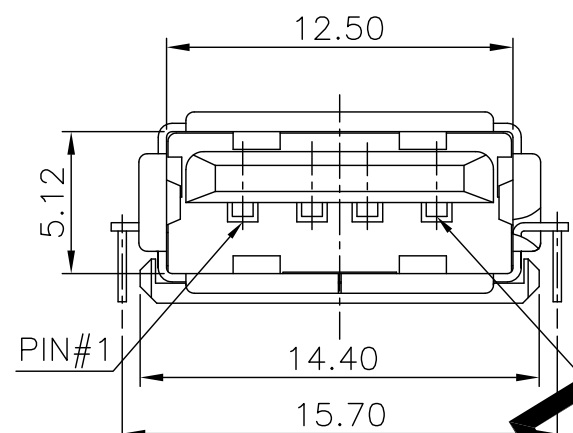
P	LTR	DESCRIPTION	DATE	DWN	APVD
		SEE SHEET 1.			



RECOMMENDED MOUNT DIMENSION

RECOMMEND P.C.B LAYOUT (THICKNESS=1.2mm) (COMPONENT SIDE) TOLERANCE±0.05

DETAIL A



DETAIL A SCALE 2:1

OBSOLETE

NOTE:

- MATERIAL:
HOUSING: PA9T WITH 30%GF, UL94V-0, BLACK COLOR.
CONTACT: PHOSPHOR BRONZE.
SHELL: BRASS.
- FINISH:
CONTACT: 0.762µm [30µ"] MIN. GOLD PLATING ON CONTACT AREA, 3.048µm [120µ"] MIN. BRIGHT TIN PLATING ON SOLDERTAILS.
1.27µm [50µ"] MIN. NICKEL UNDERPLATING OVERALL.
SHELL: Δ0.762µm [30µ"] MIN. TIN PLATED OVER
0.762µm [30µ"] MIN. Cu UNDERPLATING OVERALL.
Δ0.762µm [30µ"] MIN. NICKEL PLATED OVER
0.762µm [30µ"] MIN. Cu UNDERPLATING OVERALL.
- REFLOW SOLDER CAPABLE TO 260°C PER TE SPEC 109-201, CONDITION B.

OBSOLETE	△	TAPE & REEL	2-1734081-3
OBSOLETE	△	TUBE	2-1734081-2
OBSOLETE	△	TUBE	2-1734081-1
		SHELL PLATING	PACKAGE PART NUMBER

THIS DRAWING IS A CONTROLLED DOCUMENT.		DWN	TE Connectivity	
DIMENSIONS: MM		CHK		
TOLERANCES UNLESS OTHERWISE SPECIFIED:		APVD	NAME	
0 PLC ± -		PRODUCT SPEC	USB CONNECTOR, RECEPTACLE 4 POSITION, SERIES A	
1 PLC ± 0.35		APPLICATION SPEC	SIZE	CAGE CODE
2 PLC ± 0.25		WEIGHT	A3	00779
3 PLC ± 0.15		CUSTOMER DRAWING	DRAWING NO	
4 PLC ± -			C=1734081	
ANGLES ± 3'			RESTRICTED TO	
MATERIAL	FINISH		SCALE	SHEET
SEE NOTE	SEE NOTE			3 of 19
				REV E5

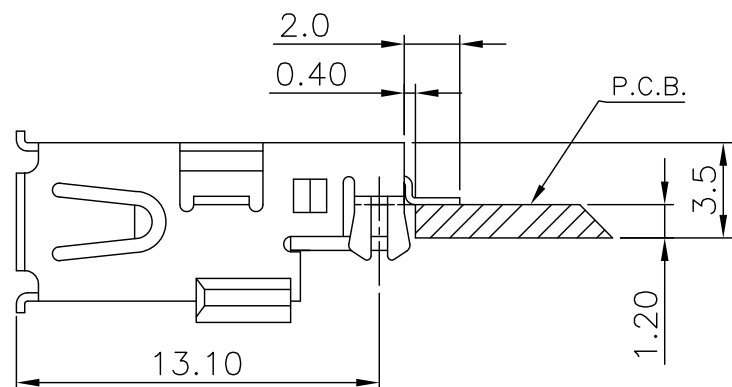
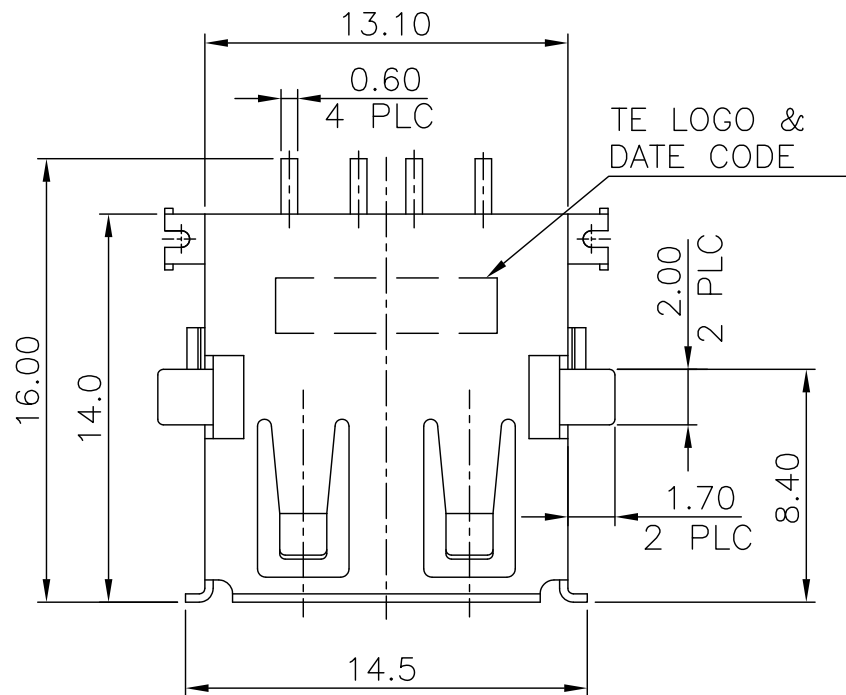
THIS DRAWING IS UNPUBLISHED.

RELEASED FOR PUBLICATION

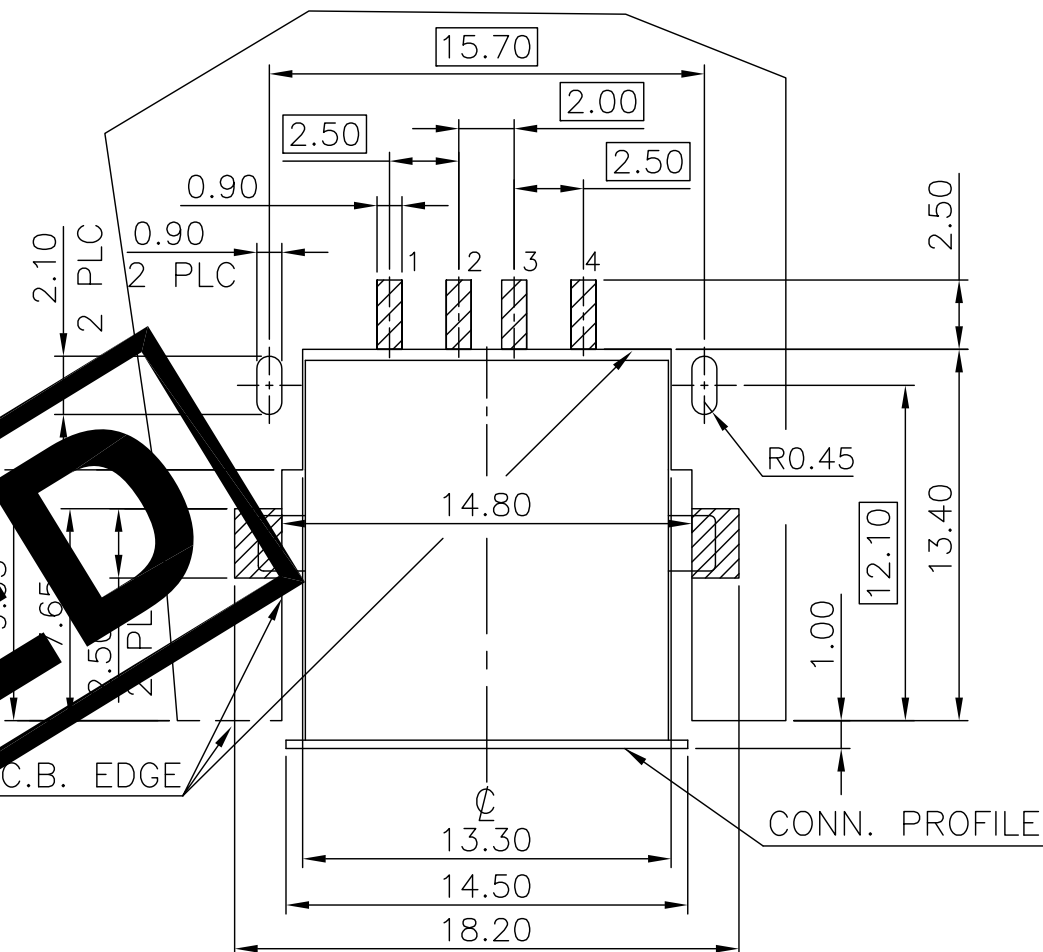
AUG ,2006.

© COPYRIGHT 2009 BY TYCO ELECTRONICS CORPORATION. ALL RIGHTS RESERVED.

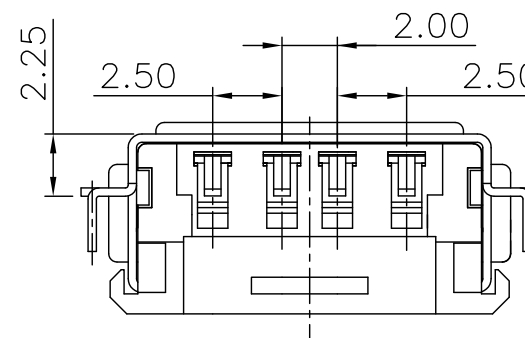
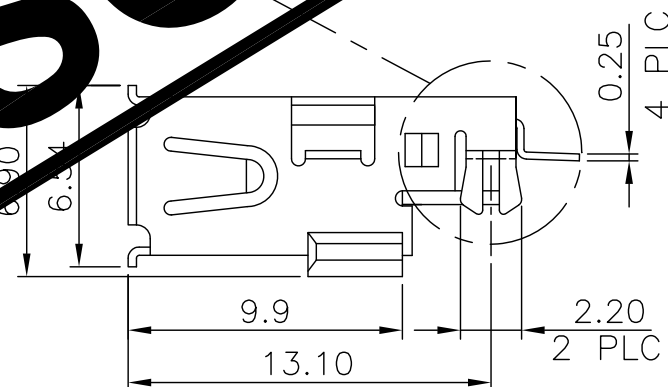
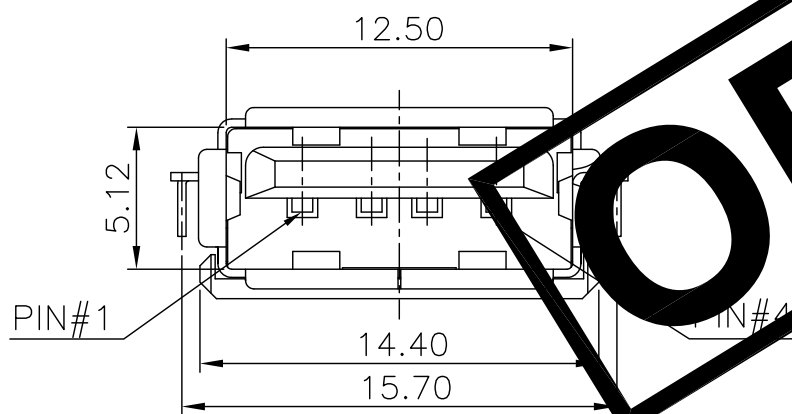
LOC	DIST	REVISIONS					
DW		P	LTR	DESCRIPTION	DATE	DWN	APVD
				SEE SHEET 1.			



RECOMMENDED MOUNT DIMENSION



RECOMMEND P.C.B LAYOUT (THICKNESS=1.2mm) (COMPONENT SIDE) TOLERANCE±0.05



OBSELETE

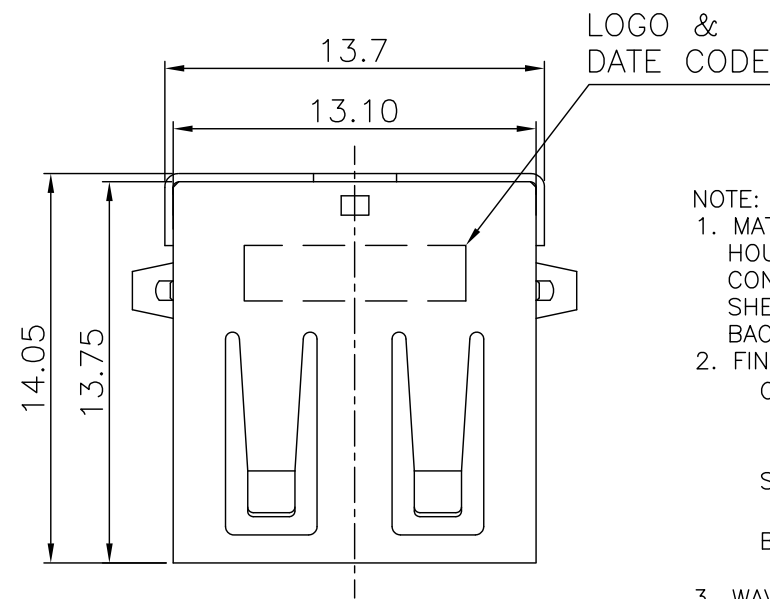
TAPE & REEL	3-1734081-1
PACKAGE	PART NUMBER

- NOTE:
- MATERIAL:
HOUSING: PA9T WITH 30%GF, UL94V-0, BLACK COLOR.
CONTACT: PHOSPHOR BRONZE.
SHELL: BRASS.
 - FINISH:
CONTACT: 0.762µm [30µ"] MIN. GOLD PLATING ON CONTACT AREA,
3.048µm [120µ"] MIN. BRIGHT TIN PLATING ON SOLDERTAILS.
1.27µm [50µ"] MIN. NICKEL UNDERPLATING OVERALL.
SHELL: 0.762µm [30µ"] MIN. NICKEL PLATED OVER
0.762µm [30µ"] MIN. Cu UNDERPLATING OVERALL.
 - REFLOW SOLDER CAPABLE TO 260°C PER TE SPEC 109-201, CONDITION B.

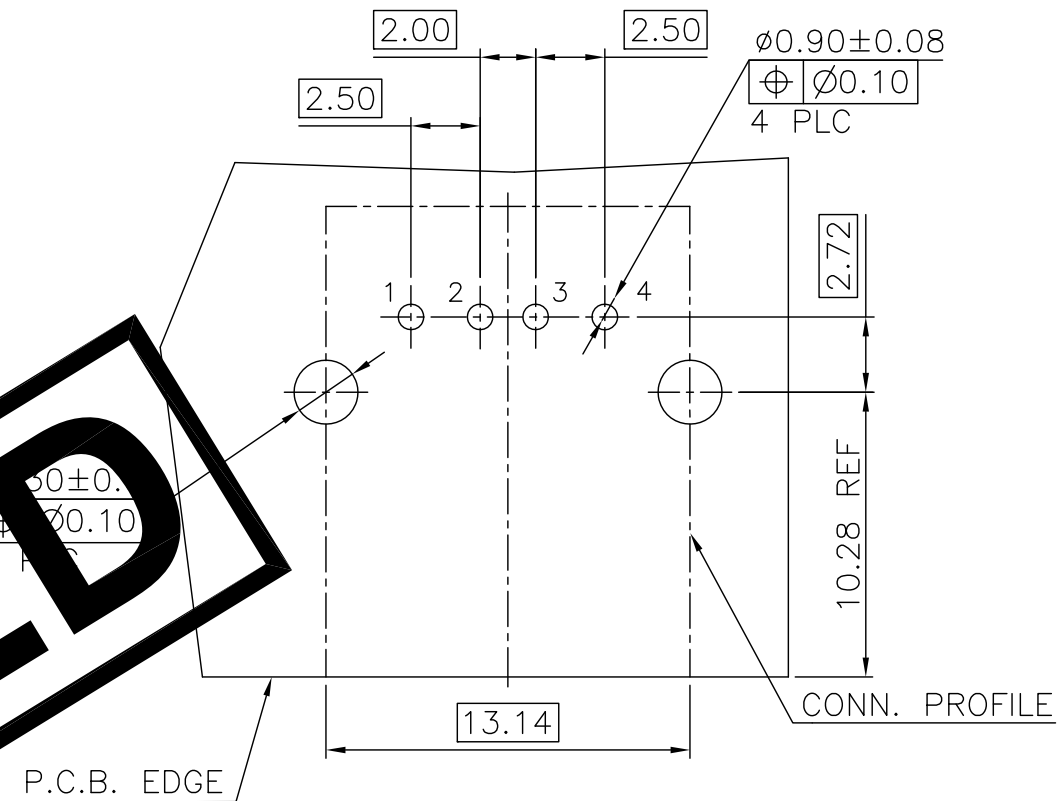
THIS DRAWING IS A CONTROLLED DOCUMENT.		DWN	TE Connectivity			
DIMENSIONS: MM		CHK				
TOLERANCES UNLESS OTHERWISE SPECIFIED:		APVD	NAME			
0 PLC ± - 1 PLC ± 0.35 2 PLC ± 0.25 3 PLC ± 0.15 4 PLC ± - ANGLES ± 3°		PRODUCT SPEC	USB CONNECTOR, RECEPTACLE 4 POSITION, SERIES A			
MATERIAL		APPLICATION SPEC	SIZE	CAGE CODE	DRAWING NO	RESTRICTED TO
SEE NOTE		WEIGHT	A3	00779	C=1734081	
SEE NOTE		CUSTOMER DRAWING	SCALE	SHEET	4 of 19	REV E5

THIS DRAWING IS UNPUBLISHED. RELEASED FOR PUBLICATION AUG ,2006.
 © COPYRIGHT 2009 BY TYCO ELECTRONICS CORPORATION. ALL RIGHTS RESERVED.

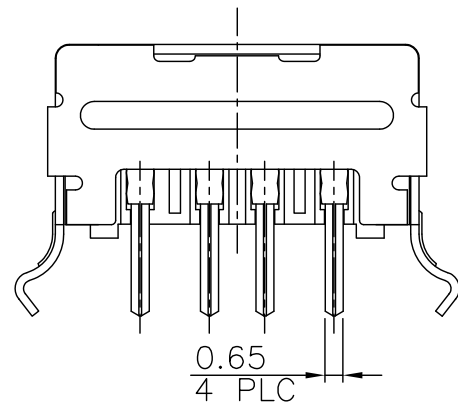
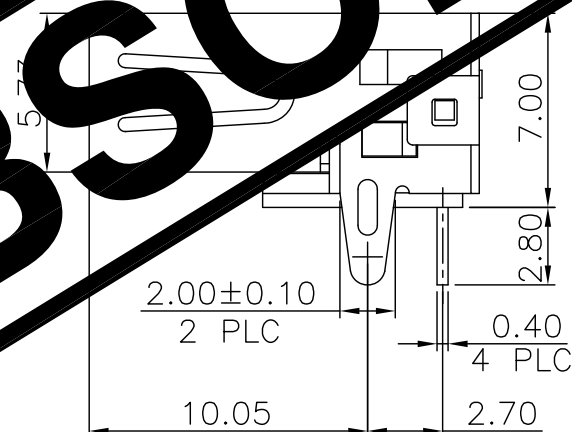
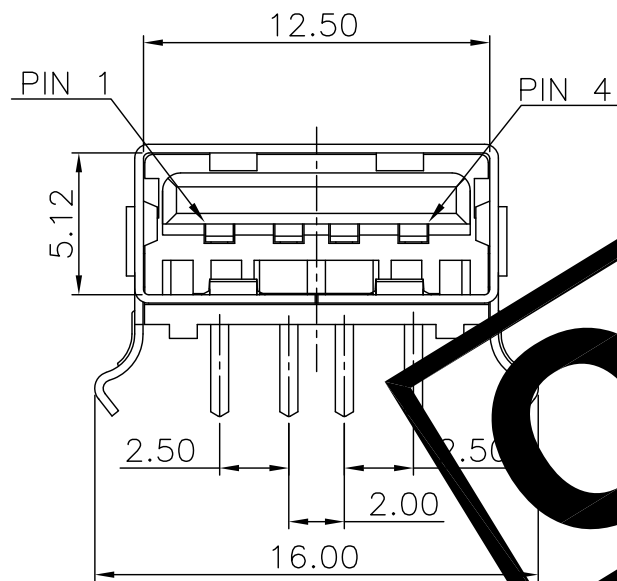
LOC	DIST	REVISIONS			
P	LTR	DESCRIPTION	DATE	DWN	APVD
DW	/	SEE SHEET 1.			



- NOTE:
- MATERIAL:
 HOUSING: PBT WITH 30%GF, UL94V-0, COLOR: SEE TABLE.
 CONTACT: PHOSPHOR BRONZE.
 SHELL: BRASS.
 BACK COVER: BRASS.
 - FINISH:
 CONTACT: 0.762µm [30µ"] MIN. GOLD PLATING ON CONTACT AREA.
 3.048µm [120µ"] MIN. BRIGHT TIN PLATING ON SOLDER TAILS.
 1.27µm [50µ"] MIN. NICKEL UNDERPLATING OVER PLATING.
 SHELL: 0.762µm [30µ"] MIN. NICKEL PLATED OVER
 0.762µm [30µ"] MIN. Cu UNDERPLATING OVER PLATING.
 BACK COVER: 0.762µm [30µ"] MIN. NICKEL PLATED OVER
 0.762µm [30µ"] MIN. Cu UNDERPLATING OVER PLATING.
 - WAVE SOLDER CAPABLE TO 245°C PER TE SPEC 10-0002, CONDITION A.



RECOMMEND P.C.B LAYOUT (THICKNESS=1.6mm)
 (COMPONENT SIDE) TOLERANCE±0.05



OBSOLETE

OBSOLETE	TRAY	MOON GRAY	4-1734081-2
		NONMETALLIC PEARL	4-1734081-1
	PACKAGE	HSG. COLOR	PART NUMBER

THIS DRAWING IS A CONTROLLED DOCUMENT.		DWN	TE Connectivity			
DIMENSIONS: MM		CHK				
TOLERANCES UNLESS OTHERWISE SPECIFIED:		APVD	NAME			
0 PLC ± - 1 PLC ± 0.35 2 PLC ± 0.25 3 PLC ± 0.15 4 PLC ± - ANGLES ± 3°		PRODUCT SPEC	USB CONNECTOR, RECEPTACLE 4 POSITION, SERIES A			
MATERIAL SEE NOTE		APPLICATION SPEC	SIZE	CAGE CODE	DRAWING NO	RESTRICTED TO
FINISH SEE NOTE		WEIGHT	A3	00779	C=1734081	
		CUSTOMER DRAWING	SCALE	SHEET	5 of 19	REV E5

THIS DRAWING IS UNPUBLISHED.

RELEASED FOR PUBLICATION

AUG ,2006.

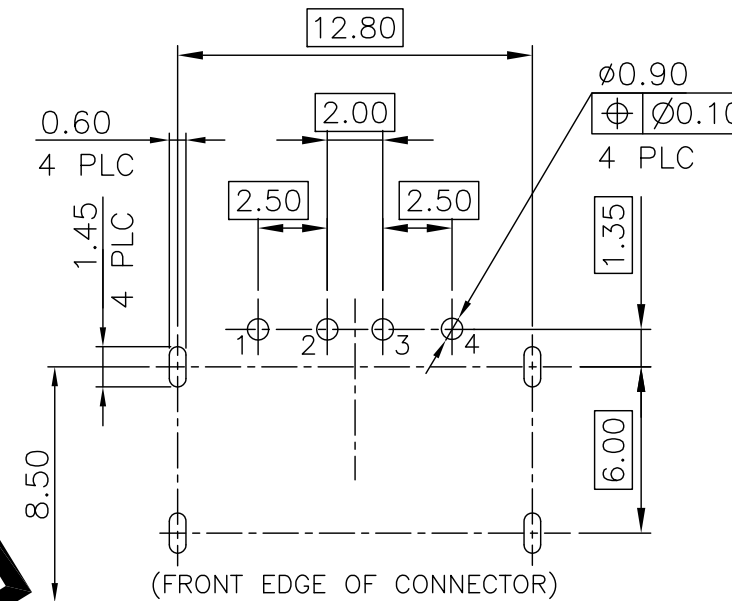
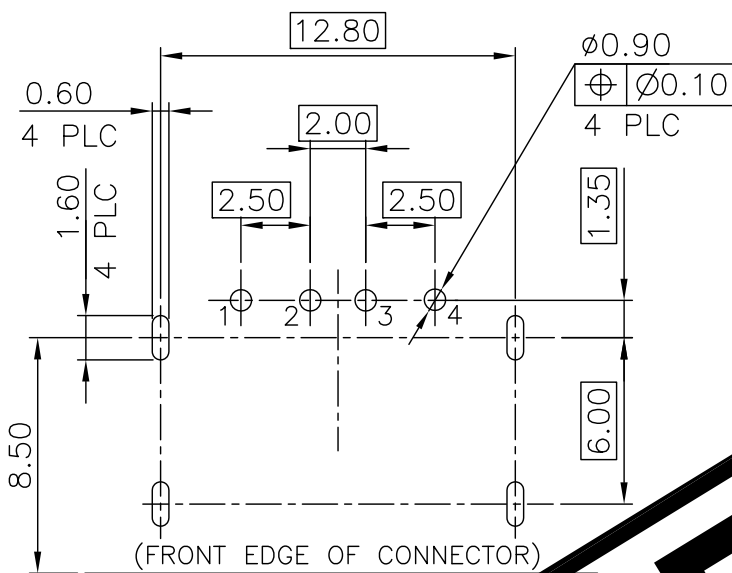
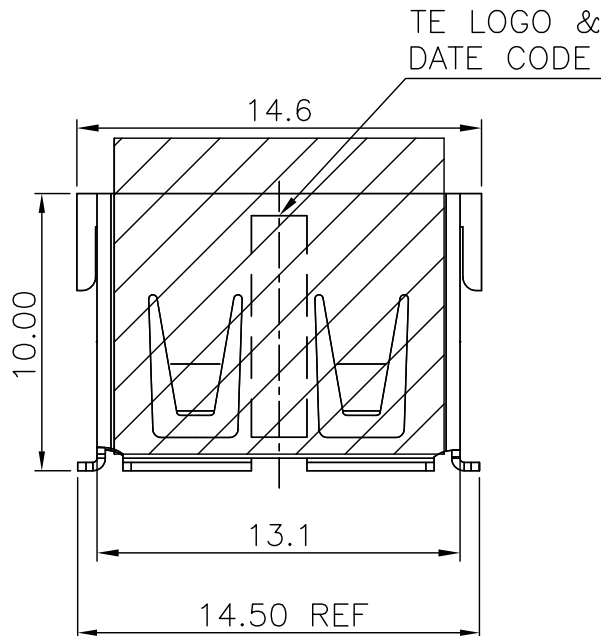
© COPYRIGHT 2009 BY TYCO ELECTRONICS CORPORATION. ALL RIGHTS RESERVED.

LOC DW

DIST

REVISIONS

P	LTR	DESCRIPTION	DATE	DWN	APVD
		SEE SHEET 1.			



RECOMMEND P.C.B LAYOUT (THICKNESS=1.4mm) (COMPONENT SIDE) TOLERANCE ±0.05

RECOMMEND P.C.B LAYOUT (THICKNESS=1.4mm) (COMPONENT SIDE) TOLERANCE ±0.05

NOTE:

1. MATERIAL:

HOUSING: PA9T WITH 30%GF, UL94V-0, BLACK COLOR.

CONTACT: PHOSPHOR BRONZE.

SHELL: BRASS.

MYLAR: KAPTON, 0.06 THICKNESS

△ FINISH:

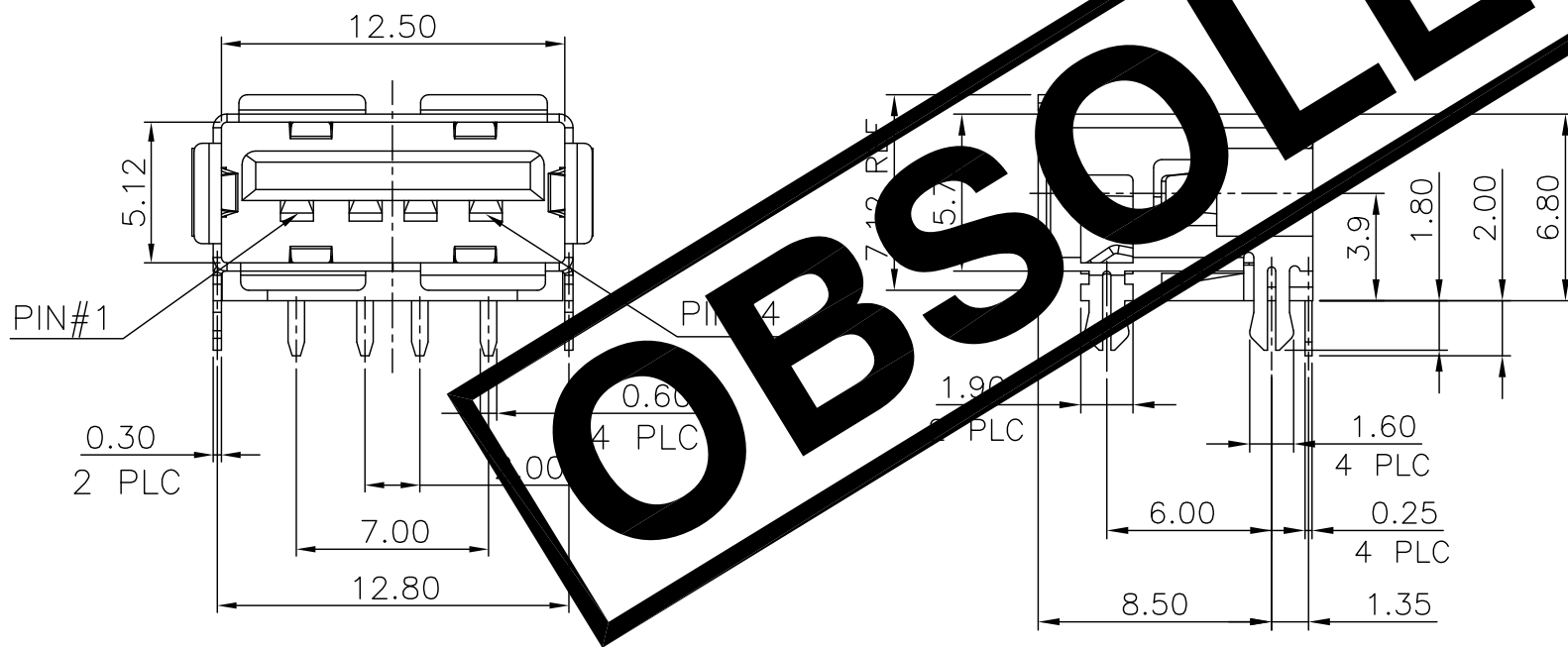
CONTACT: 0.762 μ m [30 μ "] MIN. GOLD PLATING ON CONTACT AREA,
2.54 μ m [100 μ "] MIN. MATTE-TIN PLATING ON SOLDER TAIL,
WITH ENTIRE CONTACT UNDERPLATED 1.27 μ m [50 μ "] MIN. NICKEL
SHELL: 1.27 μ m [50 μ "] MIN. NICKEL PLATING.

△ FINISH:

CONTACT: 0.254 μ m [10 μ "] MIN. GOLD PLATING ON CONTACT AREA.
2.54 μ m [100 μ "] MIN. MATTE-TIN PLATING ON SOLDER TAIL,
WITH ENTIRE CONTACT UNDERPLATED 1.27 μ m [50 μ "] MIN. NICKEL
SHELL: 1.27 μ m [50 μ "] MIN. NICKEL PLATING.
SPUTTERING/BLACK PLATING IN FRONT FLANGE.

4. REFLOW SOLDER CAPABLE TO 260°C PER TE TEST SPEC 109-201, CONDITION B.

△ CONNECTOR MOUNTING WITH ZERO INSERTION FORCE.



OBSOLETE

OBSOLETE	△	TAPE&REEL W/O MYLAR	5-1734081-3
	△	TAPE&REEL W/ MYLAR	5-1734081-2
	△	TAPE&REEL W/ MYLAR	5-1734081-1
	FINISH	PACKAGE	PART NUMBER

THIS DRAWING IS A CONTROLLED DOCUMENT.		DWN	TE TE Connectivity											
DIMENSIONS: MM		CHK												
TOLERANCES UNLESS OTHERWISE SPECIFIED:		APVD	NAME USB CONNECTOR, RECEPTACLE 4 POSITION, SERIES A											
<table border="0"> <tr><td>0 PLC</td><td>± -</td></tr> <tr><td>1 PLC</td><td>± 0.35</td></tr> <tr><td>2 PLC</td><td>± 0.25</td></tr> <tr><td>3 PLC</td><td>± 0.15</td></tr> <tr><td>4 PLC</td><td>± -</td></tr> <tr><td>ANGLES</td><td>± 3'</td></tr> </table>		0 PLC			± -	1 PLC	± 0.35	2 PLC	± 0.25	3 PLC	± 0.15	4 PLC	± -	ANGLES
0 PLC	± -													
1 PLC	± 0.35													
2 PLC	± 0.25													
3 PLC	± 0.15													
4 PLC	± -													
ANGLES	± 3'													
MATERIAL SEE NOTE		FINISH SEE NOTE	APPLICATION SPEC	<table border="1"> <tr> <td>SIZE</td> <td>CAGE CODE</td> <td>DRAWING NO</td> <td>RESTRICTED TO</td> </tr> <tr> <td>A3</td> <td>00779</td> <td>C=1734081</td> <td>-</td> </tr> </table>		SIZE	CAGE CODE	DRAWING NO	RESTRICTED TO	A3	00779	C=1734081	-	
SIZE	CAGE CODE	DRAWING NO	RESTRICTED TO											
A3	00779	C=1734081	-											
		WEIGHT 1.54 GRAMS	CUSTOMER DRAWING											
		CUSTOMER DRAWING	SCALE	SHEET 6 of 19	REV E5									

THIS DRAWING IS UNPUBLISHED.

RELEASED FOR PUBLICATION

AUG ,2006.

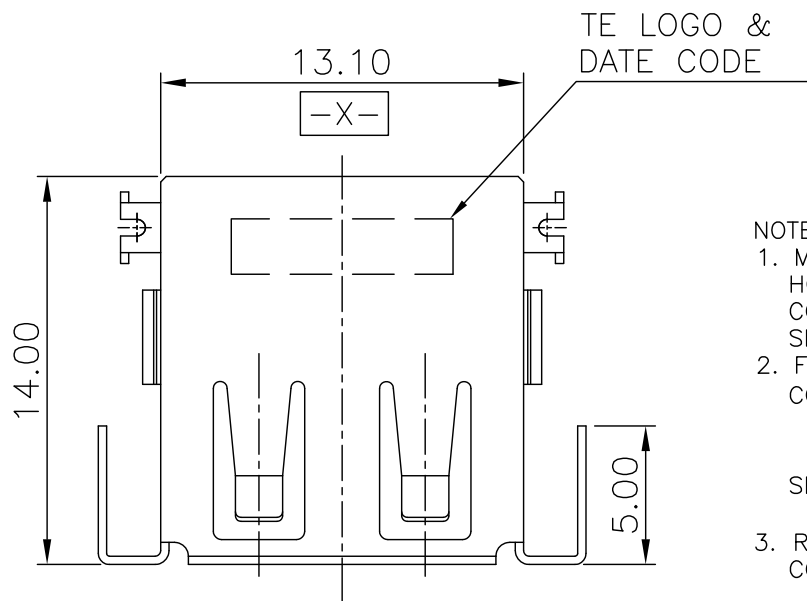
© COPYRIGHT 2009 BY TYCO ELECTRONICS CORPORATION. ALL RIGHTS RESERVED.

LOC DW

DIST

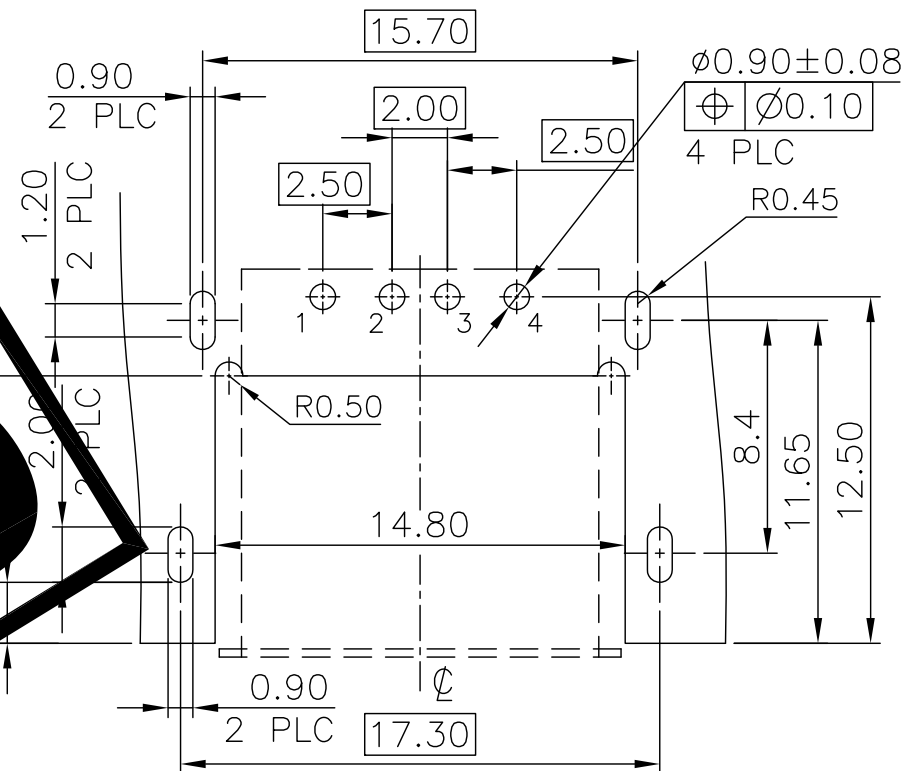
REVISIONS

P	LTR	DESCRIPTION	DATE	DWN	APVD
		SEE SHEET 1.			

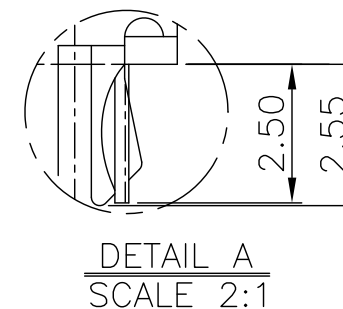
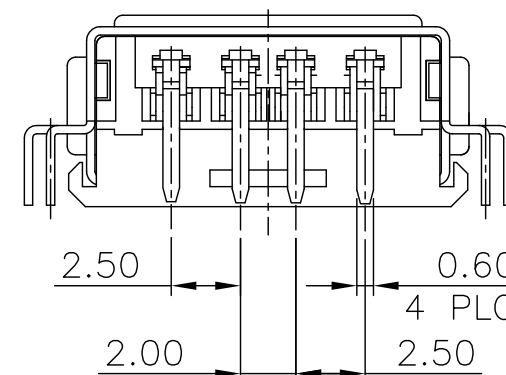
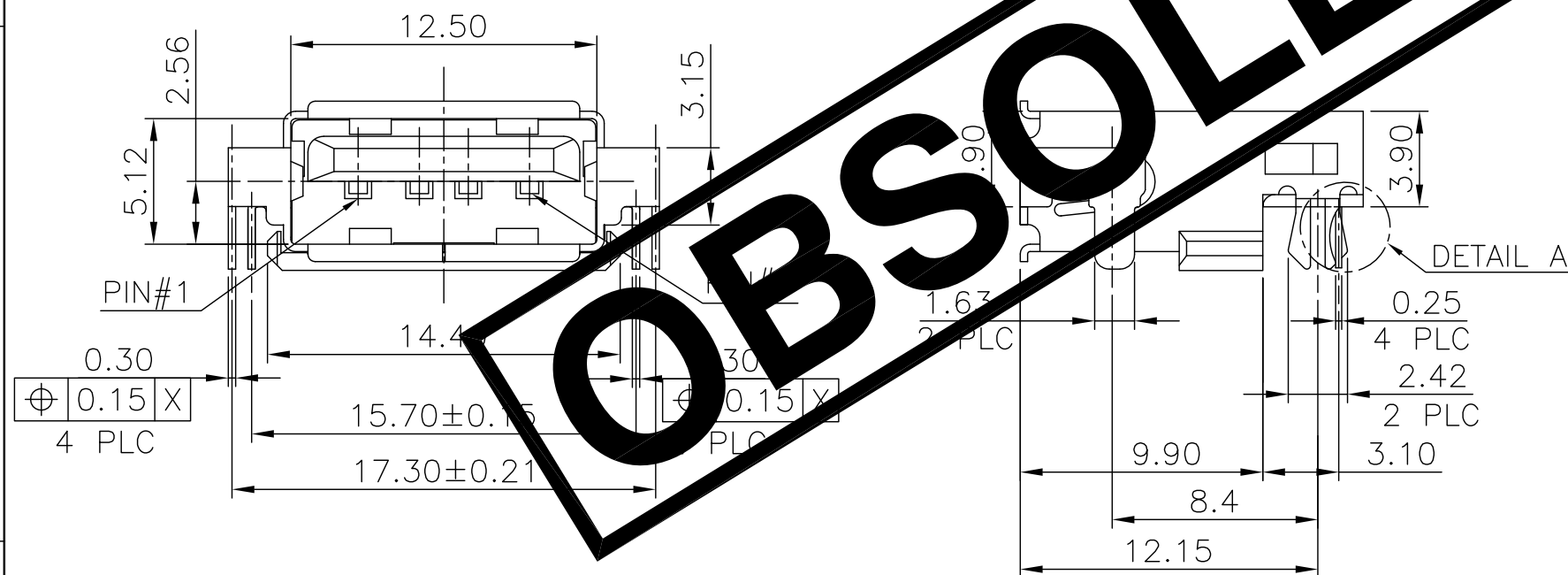


NOTE:

- MATERIAL:**
HOUSING: PA9T WITH 30%GF, UL94V-0, BLACK COLOR.
CONTACT: PHOSPHOR BRONZE.
SHELL: BRASS.
- FINISH:**
CONTACT: 0.762µm [30µ"] MIN. GOLD PLATING ON CONTACT AREA, 3.048µm [120µ"] MIN. BRIGHT TIN PLATING ON SOLDER TAILS, 1.27µm [50µ"] MIN. NICKEL UNDERPLATING OVERALL.
SHELL: 0.762µm [30µ"] MIN. NICKEL PLATED OVER, 0.762µm [30µ"] MIN. Cu UNDERPLATING OVERALL.
- REFLOW SOLDER CAPABLE TO 260°C PER TE SPEC 109-2 CONDITION B.**



RECOMMEND P.C.B LAYOUT (THICKNESS=1.6mm) (COMPONENT SIDE) TOLERANCE±0.05



OBSOLETE	TAPE & REEL	6-1734081-2
	TUBE	6-1734081-1
	PACKAGE	PART NUMBER

THIS DRAWING IS A CONTROLLED DOCUMENT.		DWN	TE TE Connectivity	
DIMENSIONS: MM		CHK		
TOLERANCES UNLESS OTHERWISE SPECIFIED:		APVD	NAME	
0 PLC ± -		PRODUCT SPEC	USB CONNECTOR, RECEPTACLE 4 POSITION, SERIES A	
1 PLC ± 0.35		APPLICATION SPEC		
2 PLC ± 0.25		WEIGHT	SIZE	CAGE CODE
3 PLC ± 0.15		1.47 GRAMS	A3	00779
4 PLC ± -		CUSTOMER DRAWING	DRAWING NO	RESTRICTED TO
ANGLES ± 3'			C=1734081	
MATERIAL SEE NOTE			SCALE	SHEET
FINISH SEE NOTE				7 of 19
				REV E5

THIS DRAWING IS UNPUBLISHED.

RELEASED FOR PUBLICATION

AUG ,2006.

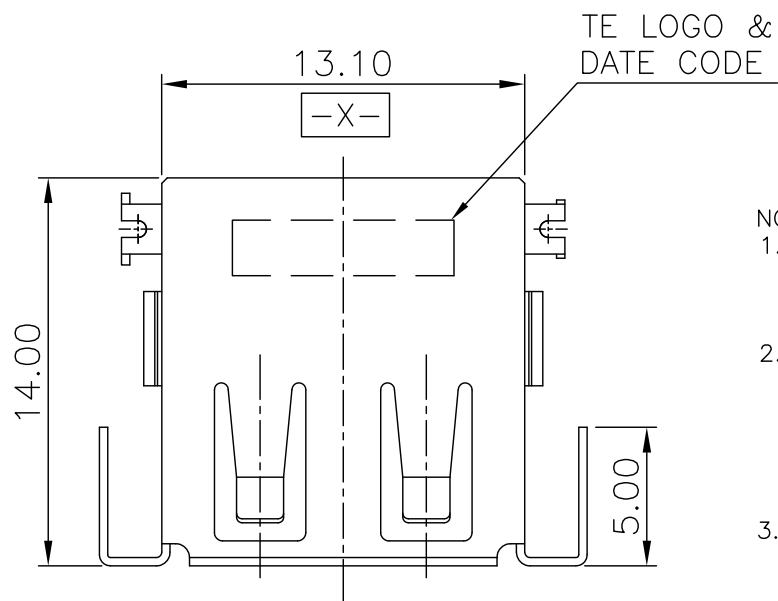
© COPYRIGHT 2009 BY TYCO ELECTRONICS CORPORATION. ALL RIGHTS RESERVED.

LOC DW

DIST

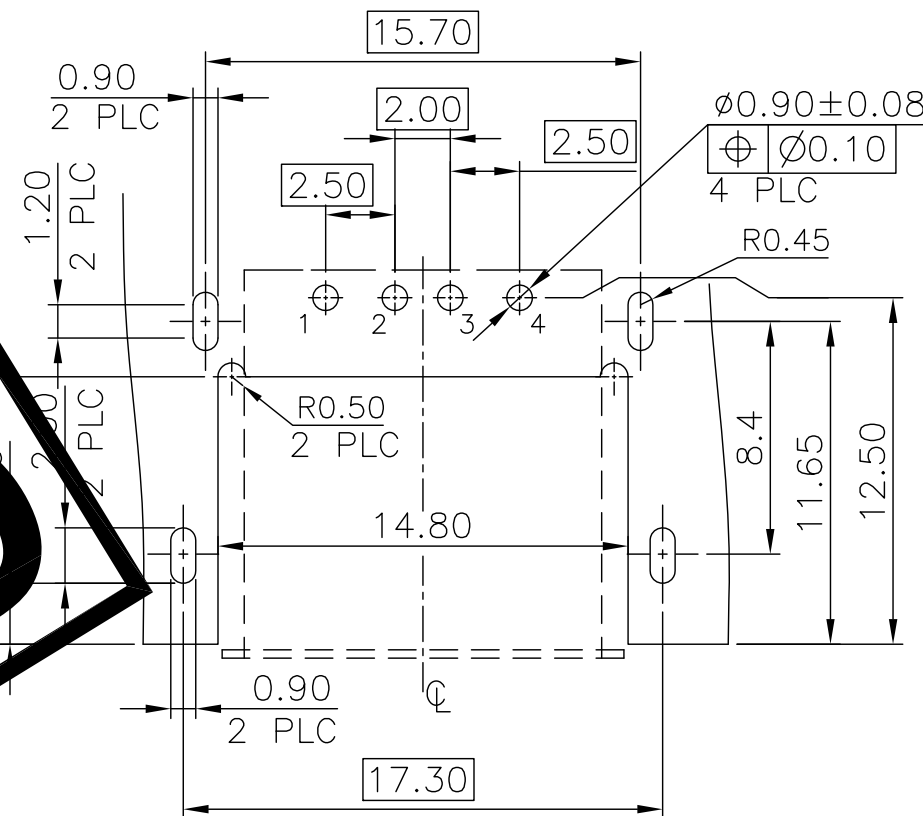
REVISIONS

P	LTR	DESCRIPTION	DATE	DWN	APVD
		SEE SHEET 1.			

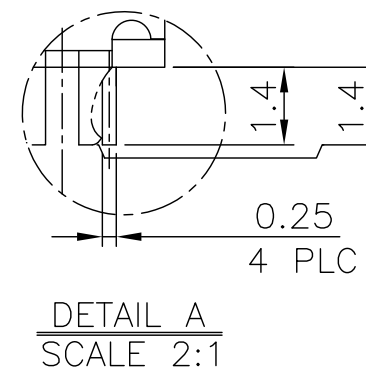
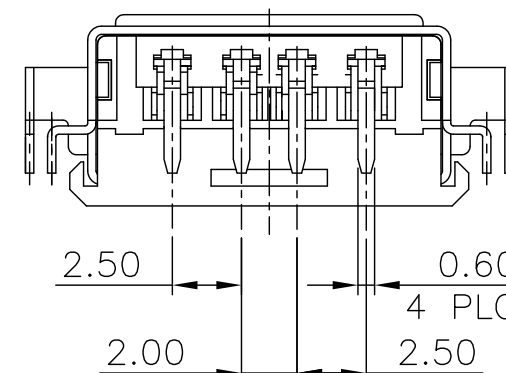
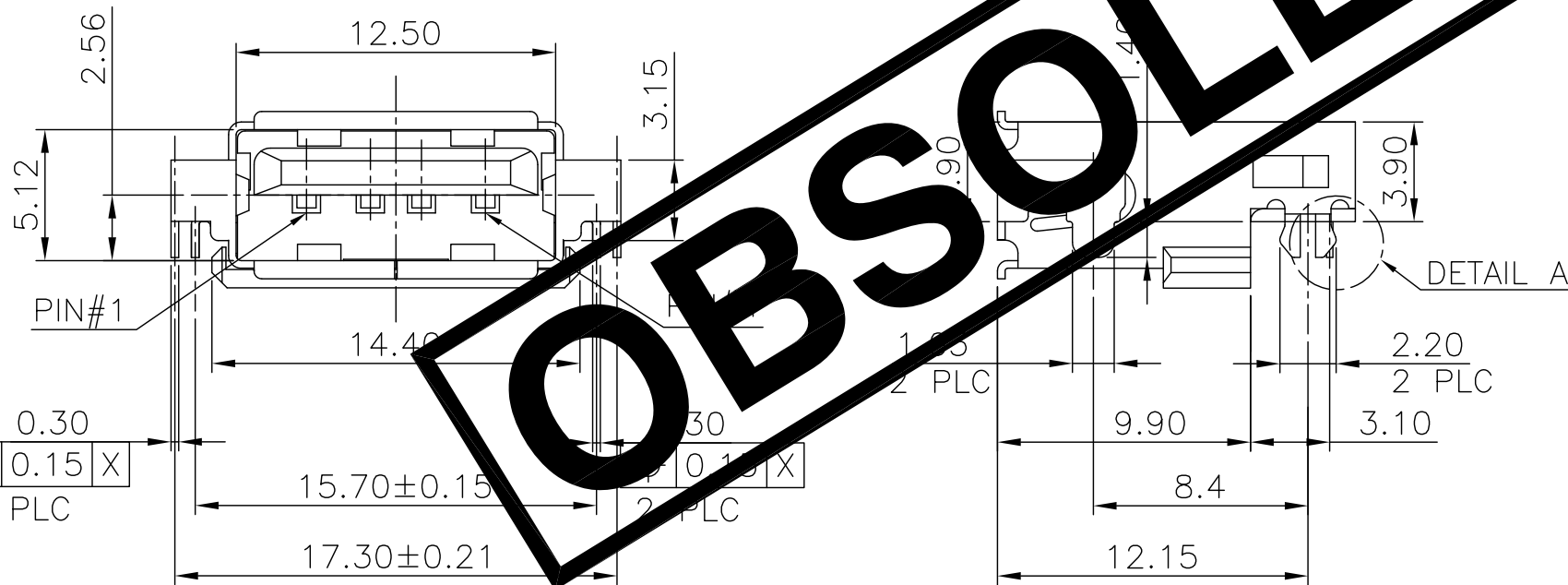


NOTE:

- MATERIAL:
HOUSING: PA9T WITH 30%GF, UL94V-0, BLACK COLOR.
CONTACT: PHOSPHOR BRONZE.
SHELL: BRASS.
- FINISH:
CONTACT: 0.762μm [30μ"] MIN. GOLD PLATING ON CONTACT AREA,
3.048μm [120μ"] MIN. BRIGHT TIN PLATING ON SOLDER PINS.
1.27μm [50μ"] MIN. NICKEL UNDERPLATING OVERALL.
SHELL: 0.762μm [30μ"] MIN. NICKEL PLATED OVER
0.762μm [30μ"] MIN. Cu UNDERPLATING OVER ALL.
- REFLOW SOLDER CAPABLE TO 260°C PER TE SPEC 109-2
CONDITION B.



RECOMMEND P.C.B LAYOUT (THICKNESS=0.8mm)
(COMPONENT SIDE) TOLERANCE±0.05



TAPE & REEL	6-1734081-3
PACKAGE	PART NUMBER

THIS DRAWING IS A CONTROLLED DOCUMENT.		DWN	STE TE Connectivity	
DIMENSIONS: MM		CHK		
TOLERANCES UNLESS OTHERWISE SPECIFIED:		APVD	NAME	
0 PLC ± -		PRODUCT SPEC	USB CONNECTOR, RECEPTACLE 4 POSITION, SERIES A	
1 PLC ± 0.35		APPLICATION SPEC	SIZE	CAGE CODE
2 PLC ± 0.25		WEIGHT	A3	00779
3 PLC ± 0.15		CUSTOMER DRAWING	DRAWING NO	
4 PLC ± -		SCALE	C=1734081	
ANGLES ± 3'		SHEET	RESTRICTED TO	
MATERIAL	FINISH	8 OF 19	REV E5	
SEE NOTE	SEE NOTE			

THIS DRAWING IS UNPUBLISHED.

RELEASED FOR PUBLICATION

AUG ,2006.

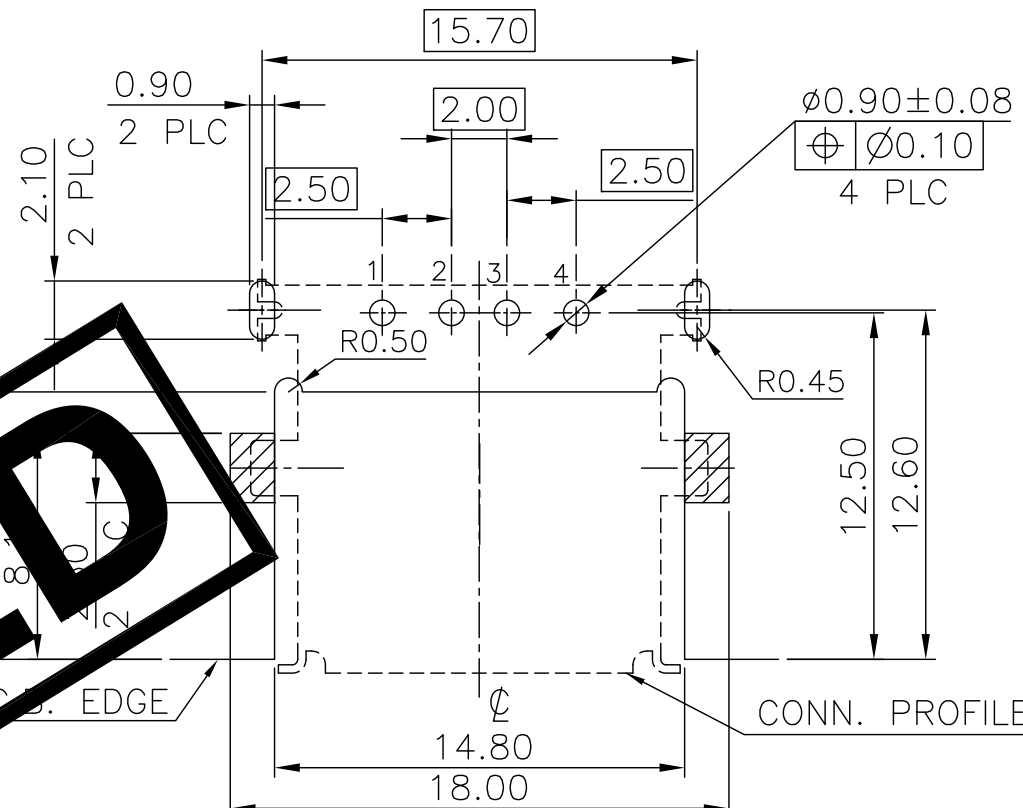
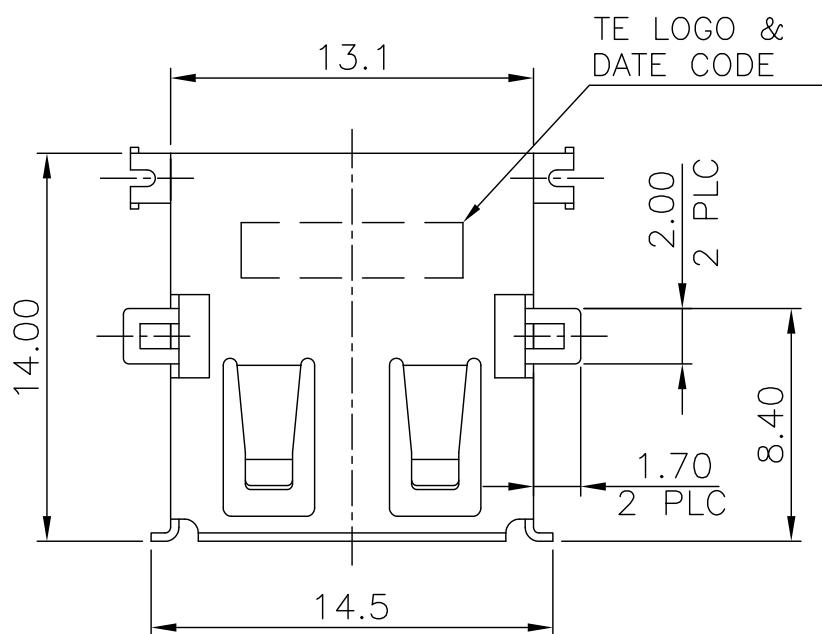
© COPYRIGHT 2009 BY TYCO ELECTRONICS CORPORATION. ALL RIGHTS RESERVED.

LOC DW

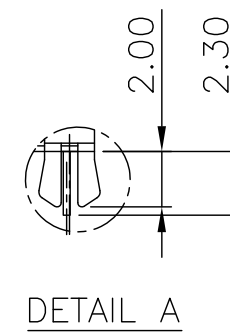
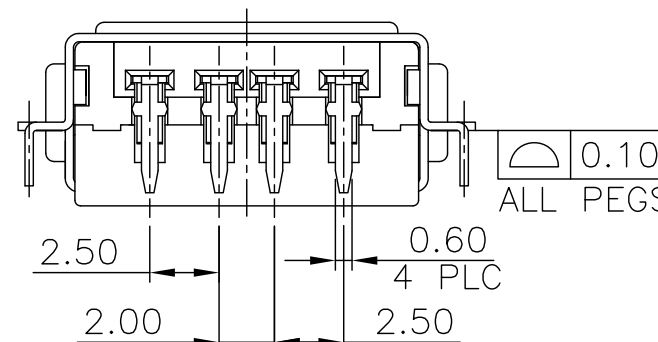
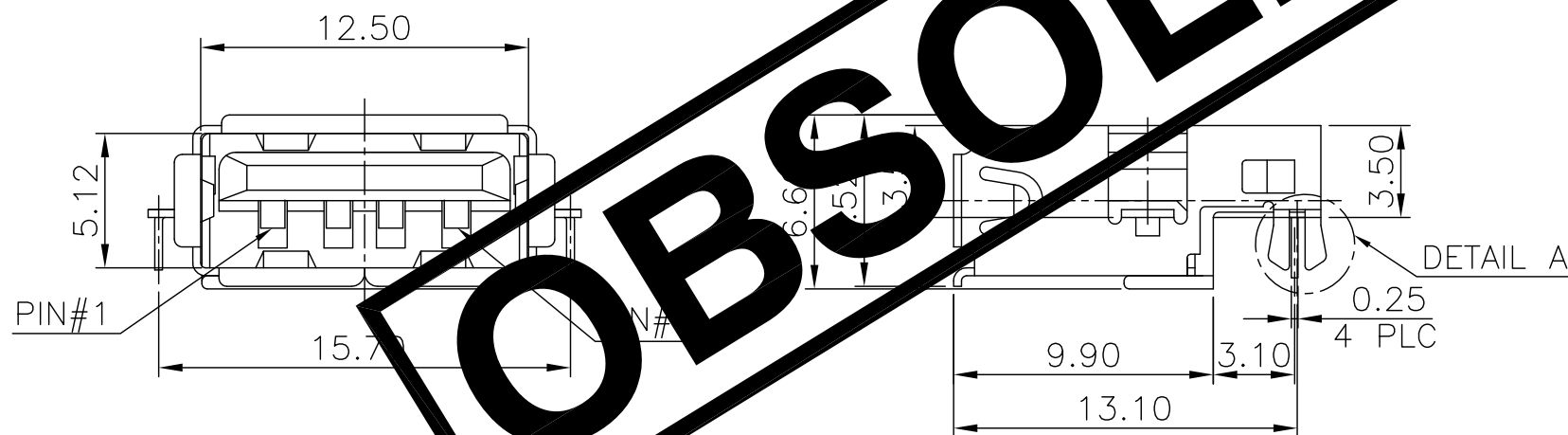
DIST

REVISIONS

P	LTR	DESCRIPTION	DATE	DWN	APVD
		SEE SHEET 1.			



RECOMMEND P.C.B LAYOUT (THICKNESS=1.2mm)
(COMPONENT SIDE) TOLERANCE ± 0.05



NOTE:

- MATERIAL:
HOUSING: PA9T WITH 30%GF, UL 94 V-0, BLACK COLOR.
CONTACT: PHOSPHOR BRONZE.
SHELL: BRASS.
- FINISH:
CONTACT: $0.762\mu\text{m}$ [30μ] MIN. GOLD PLATING ON CONTACT AREA,
 $3.048\mu\text{m}$ [120μ] MIN. BRIGHT TIN PLATING ON SOLDER TAILS.
 $1.27\mu\text{m}$ [50μ] MIN. NICKEL UNDERPLATING OVERALL.
SHELL: $0.762\mu\text{m}$ [30μ] MIN. NICKEL PLATED OVER
 $0.762\mu\text{m}$ [30μ] MIN. Cu UNDERPLATING OVERALL.
- REFLOW SOLDER CAPABLE TO 260°C PER TE SPEC 109-201, CONDITION B.

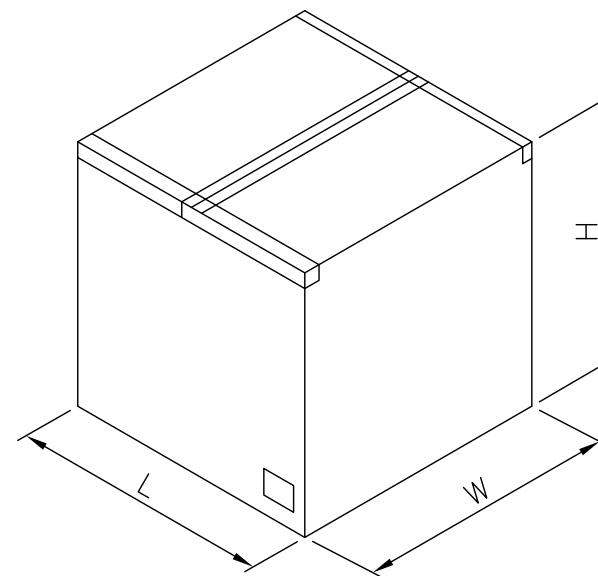
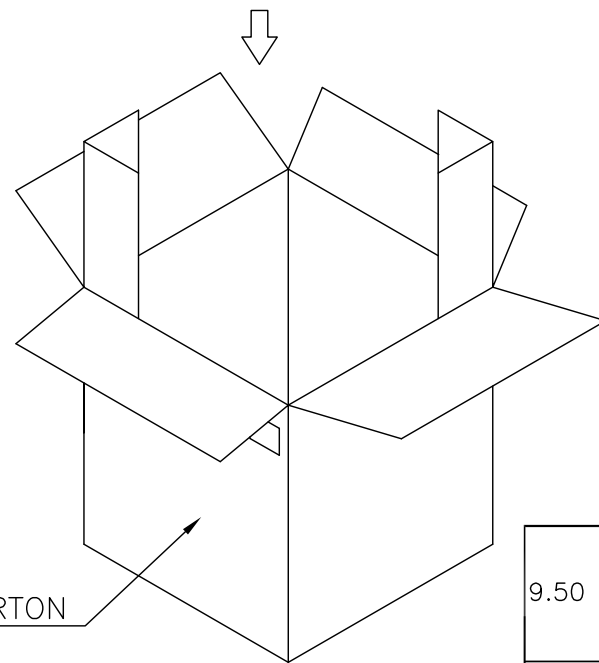
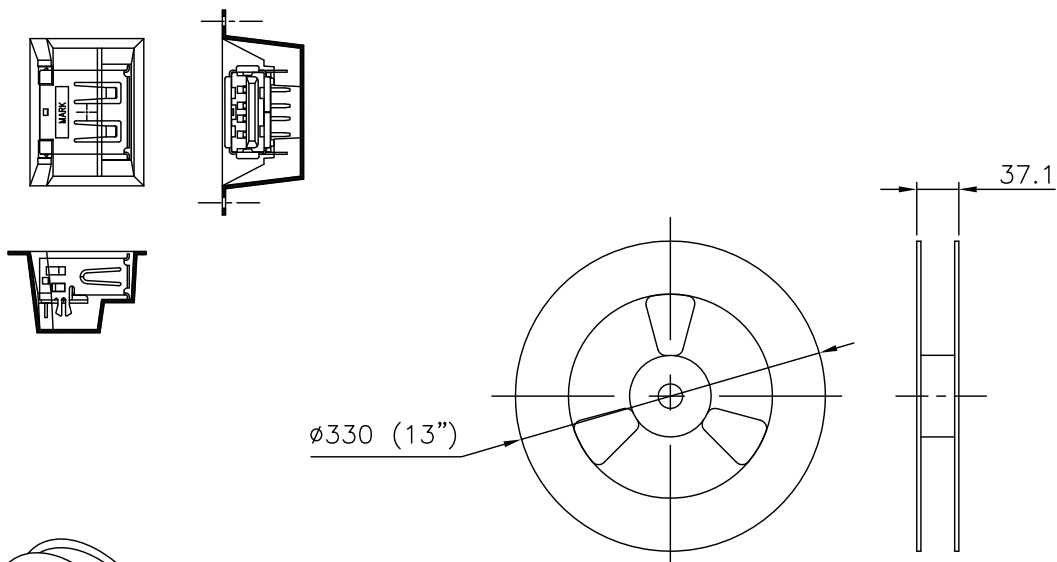
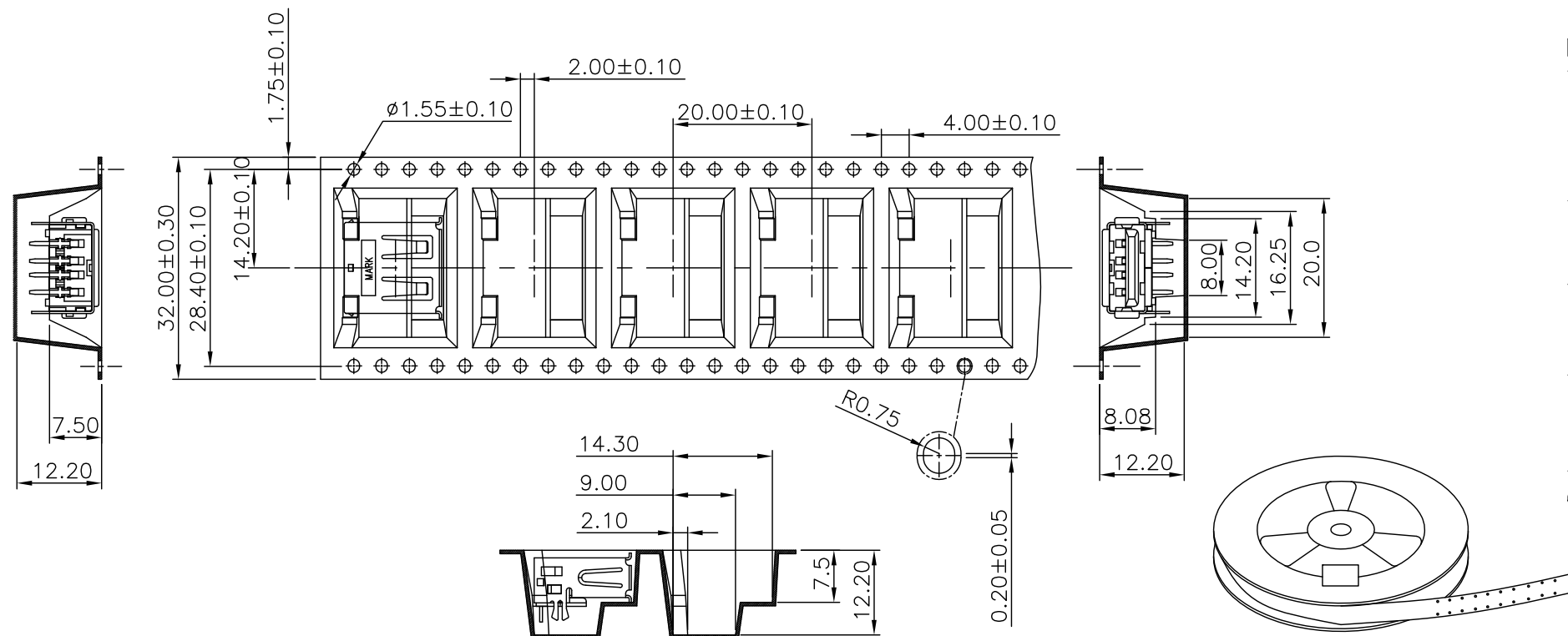
TAPE & REEL	7-1734081-1
PACKAGE	PART NUMBER

THIS DRAWING IS A CONTROLLED DOCUMENT.		DWN		TE Connectivity													
DIMENSIONS: MM		CHK															
TOLERANCES UNLESS OTHERWISE SPECIFIED:		APVD		NAME													
<table border="1"> <tr><td>0 PLC</td><td>$\pm -$</td></tr> <tr><td>1 PLC</td><td>± 0.35</td></tr> <tr><td>2 PLC</td><td>± 0.25</td></tr> <tr><td>3 PLC</td><td>± 0.15</td></tr> <tr><td>4 PLC</td><td>$\pm -$</td></tr> <tr><td>ANGLES</td><td>$\pm 3'$</td></tr> </table>		0 PLC	$\pm -$	1 PLC	± 0.35	2 PLC	± 0.25	3 PLC	± 0.15	4 PLC	$\pm -$	ANGLES	$\pm 3'$	PRODUCT SPEC		USB CONNECTOR, RECEPTACLE 4 POSITION, SERIES A	
0 PLC	$\pm -$																
1 PLC	± 0.35																
2 PLC	± 0.25																
3 PLC	± 0.15																
4 PLC	$\pm -$																
ANGLES	$\pm 3'$																
MATERIAL SEE NOTE		FINISH SEE NOTE		RESTRICTED TO													
		WEIGHT 1.57 GRAMS		SIZE A3													
		CUSTOMER DRAWING		CAGE CODE 00779													
				DRAWING NO 1734081													
				SCALE													
				SHEET 9 of 19													
				REV E5													

LOC	DIST	REVISIONS			
P	LTR	DESCRIPTION	DATE	DWN	APVD
		SEE SHEET 1.			

NOTES:

- MATERIAL:
REEL: PS.
EMBOSSED CARRIER: PS.
COVER TAPE: PBT.
- DIMENSION :
TAPE REEL: $\phi 330\text{mm} \times 37.1\text{mm}$
SHIPPING CARTON: L=350mm,W=350mm, H=350mm
- QUANTITY :
PRIMARY PACKING: 250PCS/REEL
SECONDARY PACKING: 9 REELS/CARTON(2,250PCS).
- WEIGHT :
NET WEIGHT: 0.50 KG/REEL, 4.52 KG/CARTON.
GROSS WEIGHT: 1.00 KG/REEL, 9.50 KG/CARTON.
- PEELING RESISTANCE: 20G TO 130G.
- PEELING SPEED: 300MM/MIN.



9.50 Kg	4.52 Kg	250	9	2250	1-1734081-4	OBSOLETE
					1-1734081-3	
					1-1734081-2	
GROSS WEIGHT	NET WEIGHT	PCS/REEL	REELS/CARTON	QUANTITY	PART NUMBER	

DIMENSIONS: MM		TOLERANCES UNLESS OTHERWISE SPECIFIED:		MATERIAL		FINISH	
0 PLC	± -	1 PLC	± -				
2 PLC	± -	3 PLC	± -				
4 PLC	± -	ANGLES	± -				

THIS DRAWING IS A CONTROLLED DOCUMENT.		DWN		 TE Connectivity			
		CHK					
		APVD					
		PRODUCT SPEC					
		APPLICATION SPEC		NAME			
		WEIGHT		USB CONNECTOR, RECEPTACLE 4 POSITION, SERIES A			
		CUSTOMER DRAWING		SIZE	CAGE CODE	DRAWING NO	RESTRICTED TO
				A3	00779	1734081	
				SCALE	SHEET	10 of 19	REV E5

THIS DRAWING IS UNPUBLISHED.

RELEASED FOR PUBLICATION

AUG ,2006.

© COPYRIGHT 2009 BY TYCO ELECTRONICS CORPORATION. ALL RIGHTS RESERVED.

LOC DW

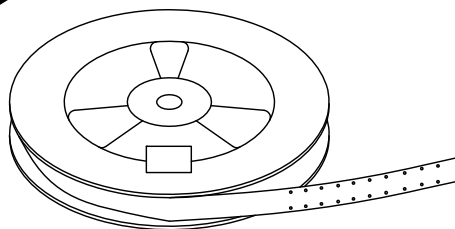
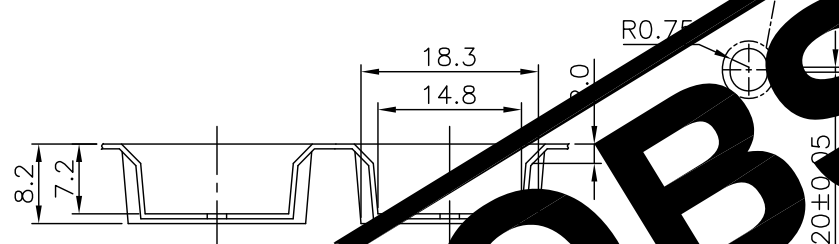
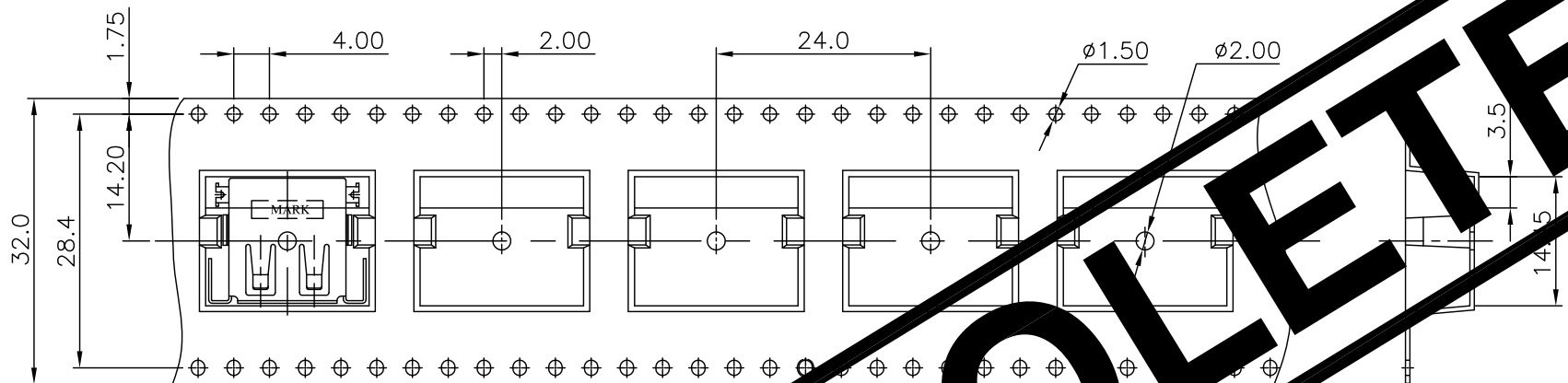
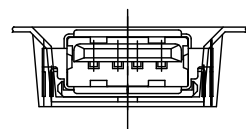
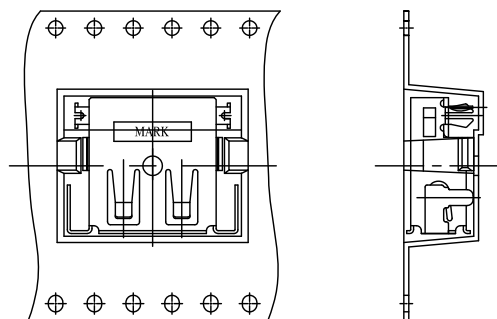
DIST

REVISIONS

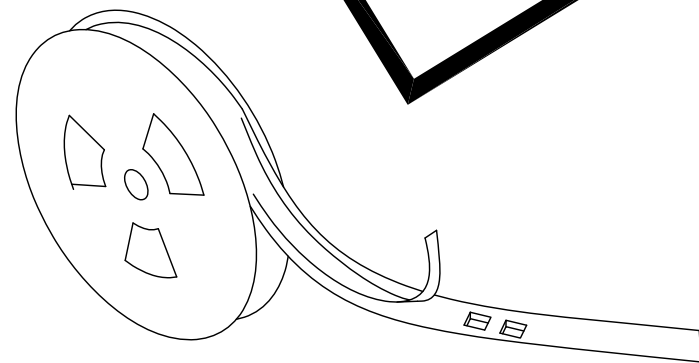
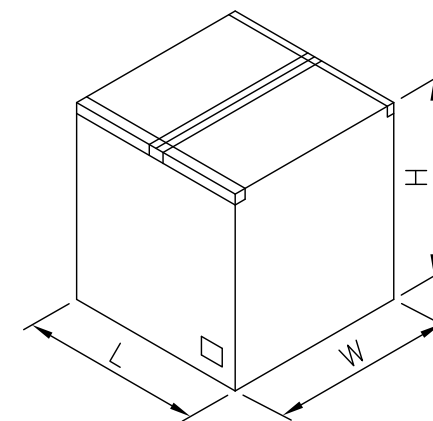
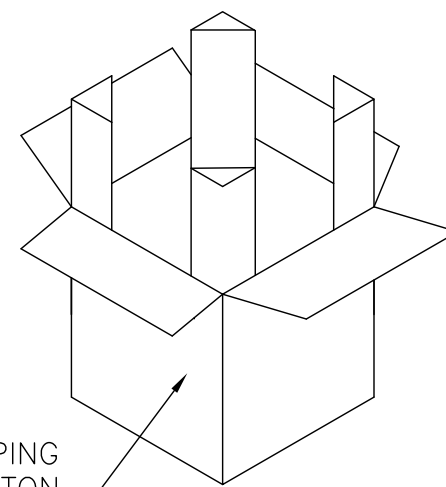
P	LTR	DESCRIPTION	DATE	DWN	APVD
		SEE SHEET 1.			

NOTES:

- MATERIAL:
REEL: PS.
EMBOSSED CARRIER: PS.
COVER TAPE: PBT.
- DIMENSION :
TAPE REEL: $\phi 330\text{mm} \times 37.1\text{mm}$
SHIPPING CARTON: L=350mm,W=350mm, H=350mm
- QUANTITY :
PRIMARY PACKING: 300PCS/REEL
SECONDARY PACKING: 8 REELS/CARTON(2,400PCS).
- WEIGHT :
NET WEIGHT: 0.44KG/REEL, 4.00 KG/CARTON.
GROSS WEIGHT: 1.81 KG/REEL, 9.05 KG/CARTON.
- PEELING RESISTANCE: 20G TO 130G.
PEELING SPEED: 300MM/MIN.



SHIPPING CARTON



9.05 Kg	4.00 Kg	300	8	2400	6-1734081-2
GROSS WEIGHT	NET WEIGHT	PCS/REEL	REELS /CARTON	QUANTITY	PART NUMBER

THIS DRAWING IS A CONTROLLED DOCUMENT.		DWN	STE TE Connectivity		
DIMENSIONS: MM		CHK			
TOLERANCES UNLESS OTHERWISE SPECIFIED:		APVD	NAME		
0 PLC	± -	PRODUCT SPEC	USB CONNECTOR, RECEPTACLE 4 POSITION, SERIES A		
1 PLC	± -	APPLICATION SPEC			
2 PLC	± -	WEIGHT			
3 PLC	± -	CUSTOMER DRAWING			
4 PLC	± -	SCALE	SIZE	CAGE CODE	DRAWING NO
ANGLES	± -	SHEET	A3	00779	C=1734081
MATERIAL	FINISH	RESTRICTED TO	11 of 19		
		REV	E5		

THIS DRAWING IS UNPUBLISHED.

RELEASED FOR PUBLICATION

AUG ,2006.

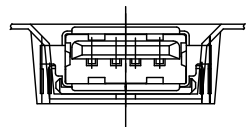
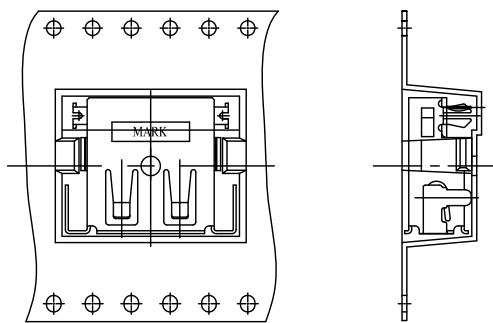
© COPYRIGHT 2009 BY TYCO ELECTRONICS CORPORATION. ALL RIGHTS RESERVED.

LOC DW

DIST

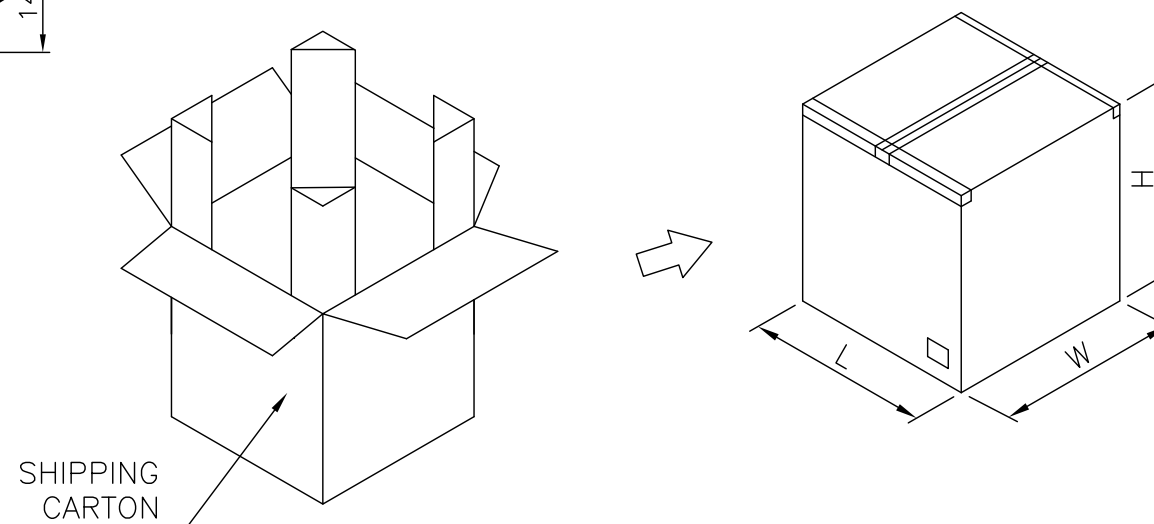
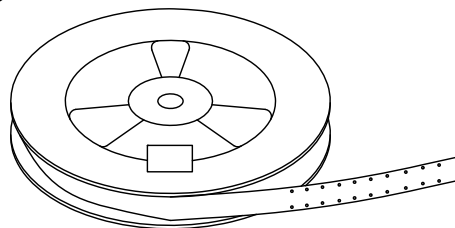
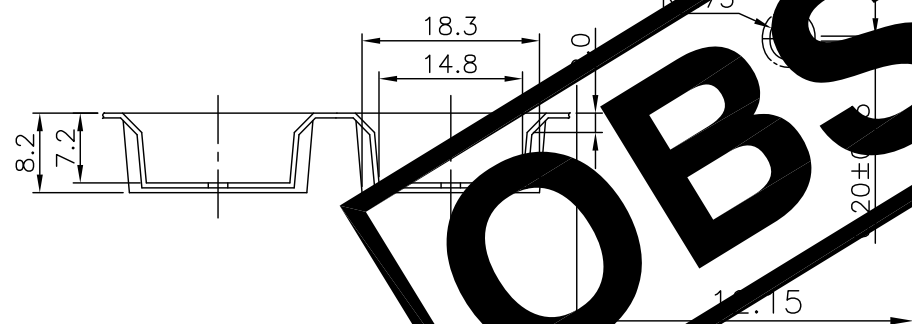
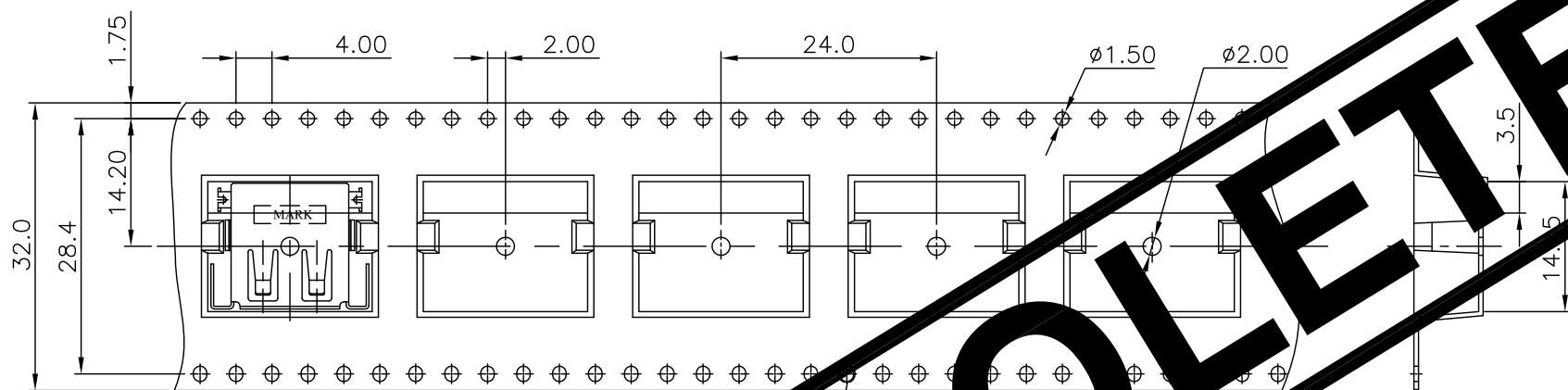
REVISIONS

P	LTR	DESCRIPTION	DATE	DWN	APVD
		SEE SHEET 1.			



NOTES:

- MATERIAL:
REEL: PS.
EMBOSSED CARRIER: PS.
COVER TAPE: PBT.
- DIMENSION :
TAPE REEL: $\phi 330\text{mm} \times 37.1\text{mm}$
SHIPPING CARTON: L=350mm,W=350mm, H=350mm
- QUANTITY :
PRIMARY PACKING: 300PCS/REEL
SECONDARY PACKING: 8 REELS/CARTON(2,400PCS).
- WEIGHT :
NET WEIGHT: 0.44KG/REEL, 4.00 KG/CARTON.
GROSS WEIGHT: 1.81 KG/REEL, 9.05 KG/CARTON.
PEELING RESISTANCE: 20G TO 130G.
- PEELING SPEED: 300MM/MIN.



OBSOLETE

9.05 Kg	4.00 Kg	300	8	2400	6-1734081-3
GROSS WEIGHT	NET WEIGHT	PCS/REEL	REELS /CARTON	QUANTITY	PART NUMBER

THIS DRAWING IS A CONTROLLED DOCUMENT.		DWN	TE TE Connectivity		
DIMENSIONS: MM		CHK			
TOLERANCES UNLESS OTHERWISE SPECIFIED:		APVD	NAME USB CONNECTOR, RECEPTACLE 4 POSITION, SERIES A		
0 PLC ± -		PRODUCT SPEC			
1 PLC ± -		APPLICATION SPEC	SIZE	CAGE CODE	DRAWING NO
2 PLC ± -		WEIGHT	A3	00779	C=1734081
3 PLC ± -		CUSTOMER DRAWING	SCALE		SHEET
4 PLC ± -			-		12 of 19
ANGLES ± -					REV E5
MATERIAL					
FINISH					

THIS DRAWING IS UNPUBLISHED.

RELEASED FOR PUBLICATION

AUG ,2006.

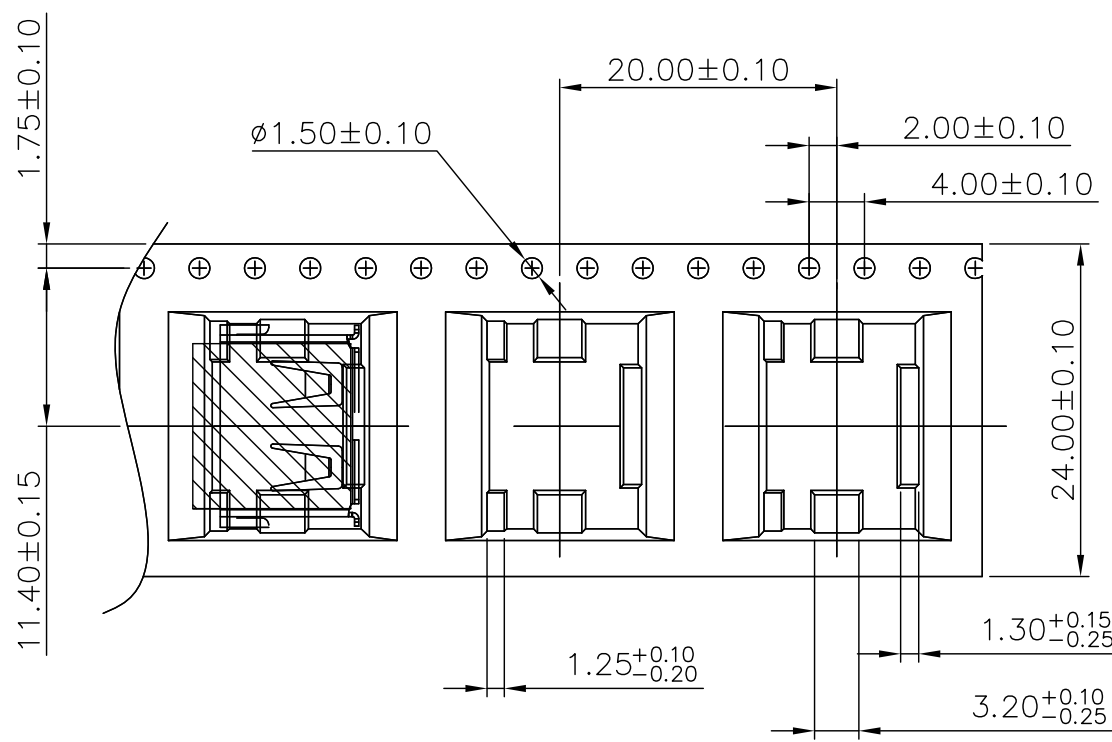
© COPYRIGHT 2009 BY TYCO ELECTRONICS CORPORATION. ALL RIGHTS RESERVED.

LOC DW

DIST

REVISIONS

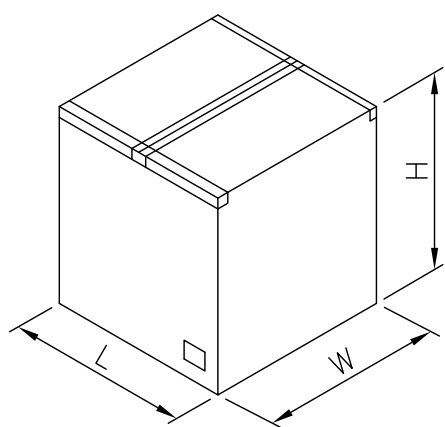
P	LTR	DESCRIPTION	DATE	DWN	APVD
		SEE SHEET 1.			



- NOTES:
- MATERIAL:
REEL: PS.
EMBOSSED CARRIER: PS.
COVER TAPE: PBT.
 - DIMENSION :
TAPE REEL: $\phi 330\text{mm} \times 29.5\text{mm}$
SHIPPING CARTON: L=350mm,W=350mm, H=400mm
 - QUANTITY :
PRIMARY PACKING: 300PCS/REEL
SECONDARY PACKING: 12 REELS/CARTON(3600PCS).
 - WEIGHT :
NET WEIGHT: 0.46 KG/REEL, 5.55 KG/CARTON.
GROSS WEIGHT: 0.89 KG/REEL, 10.65 KG/CARTON.
 - PEELING RESISTANCE: 20G TO 130G.
 - PEELING SPEED: 300MM/MIN.

OBSOLETE

SHIPPING
CARTON



OBSOLETE	300	12	3600	10.65	5.55	5-1734081-3
						5-1734081-2
						5-1734081-1
	PCS/ REEL	REELS/ BOX	QUANTITY (PCS)	G/W (Kg)	N/W (Kg)	PART NUMBER

THIS DRAWING IS A CONTROLLED DOCUMENT.

DIMENSIONS: MM	TOLERANCES UNLESS OTHERWISE SPECIFIED: 0 PLC ± - 1 PLC ± - 2 PLC ± - 3 PLC ± - 4 PLC ± - ANGLES ± -	DWN	TE Connectivity NAME USB CONNECTOR, RECEPTACLE 4 POSITION, SERIES A
MATERIAL	FINISH	CHK	
		APVD	
		PRODUCT SPEC	
		APPLICATION SPEC	SIZE
		WEIGHT	CAGE CODE
		CUSTOMER DRAWING	DRAWING NO
			RESTRICTED TO
			SCALE
			SHEET
			REV

A3 00779 C=1734081

13 of 19 E5

THIS DRAWING IS UNPUBLISHED.

RELEASED FOR PUBLICATION

AUG ,2006.

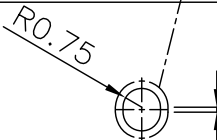
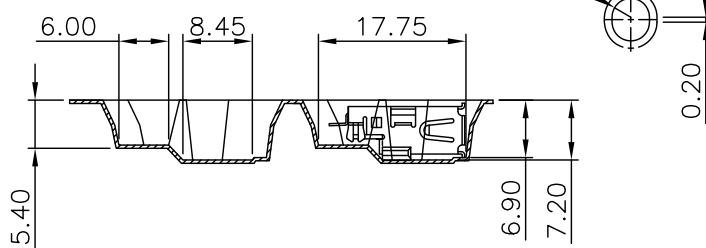
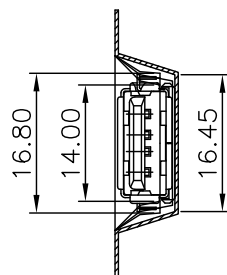
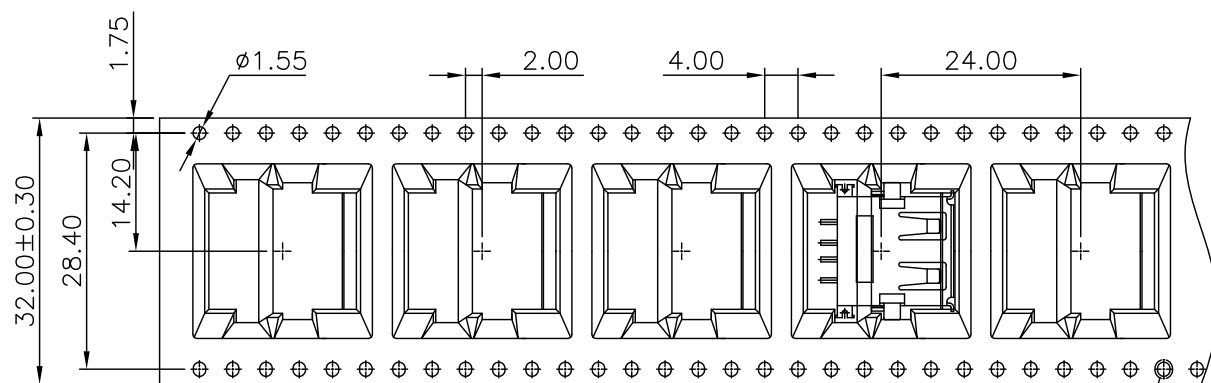
© COPYRIGHT 2009 BY TYCO ELECTRONICS CORPORATION. ALL RIGHTS RESERVED.

LOC DW

DIST

REVISIONS

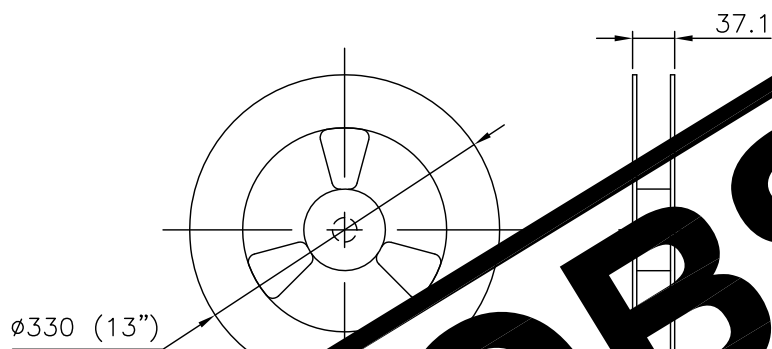
P	LTR	DESCRIPTION	DATE	DWN	APVD
		SEE SHEET 1.			



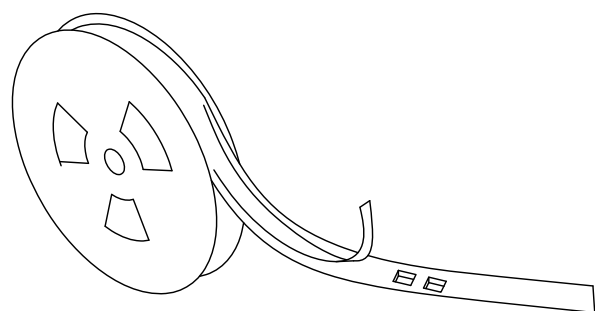
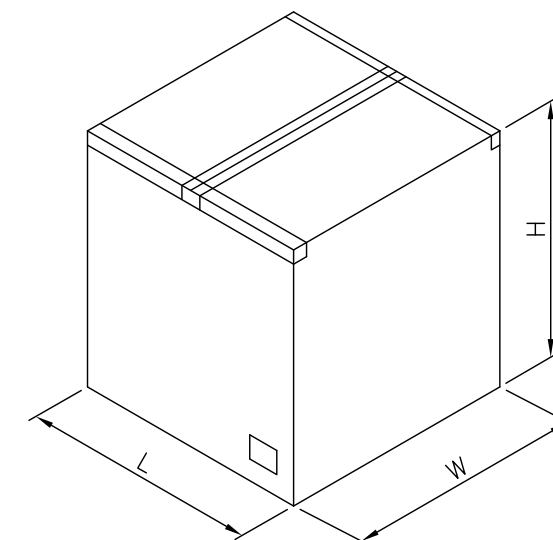
NOTES:

- MATERIAL:
REEL: PS.
EMBOSSED CARRIER: PS.
COVER TAPE: PBT.
- DIMENSION :
TAPE REEL: $\phi 330\text{mm} \times 37.1\text{mm}$
SHIPPING CARTON: L=350mm,W=350mm, H=350mm
- QUANTITY :
PRIMARY PACKING: 350PCS/REEL
SECONDARY PACKING: 9 REELS/CARTON.(3150 PCS)
- WEIGHT :
NET WEIGHT: 4.85 kg .
GROSS WEIGHT: 9.85 kg .
- REELING RESISTANCE: 20G TO 130G.
- REELING SPEED: 300MM/MIN.

OBSOLETE



SHIPPING CARTON
9 TAPE-REEL/ CARTON



9.85 Kg	4.85 Kg	350	9	3150	3-1734081-1
GROSS WEIGHT	NET WEIGHT	PCS/REEL	REELS /CARTON	QUANTITY	PART NUMBER

THIS DRAWING IS A CONTROLLED DOCUMENT.		DWN	TE Connectivity		
DIMENSIONS: MM		CHK			
TOLERANCES UNLESS OTHERWISE SPECIFIED:		APVD	NAME		
0 PLC ± -		PRODUCT SPEC	USB CONNECTOR, RECEPTACLE 4 POSITION, SERIES A		
1 PLC ± -		APPLICATION SPEC	SIZE	CAGE CODE	DRAWING NO
2 PLC ± -		WEIGHT	A3	00779	C=1734081
3 PLC ± -		CUSTOMER DRAWING	RESTRICTED TO	-	
4 PLC ± -			SCALE	SHEET	REV
ANGLES ± -			-	14 of 19	E5
FINISH					

THIS DRAWING IS UNPUBLISHED.

RELEASED FOR PUBLICATION

AUG ,2006.

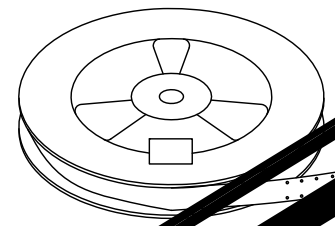
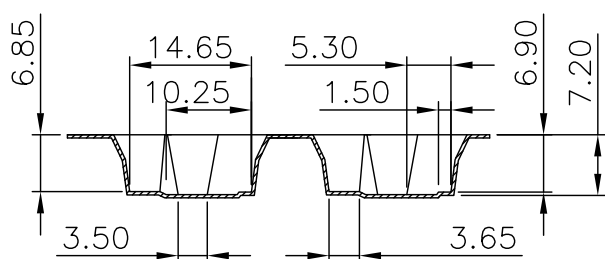
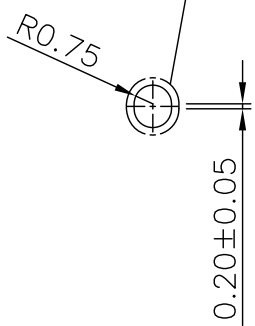
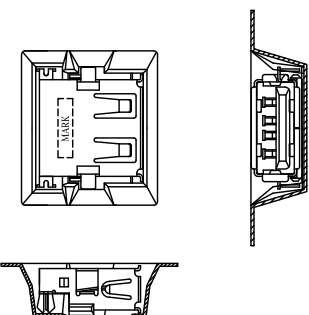
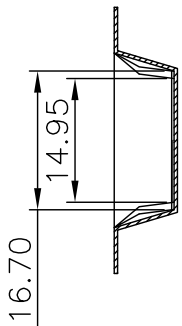
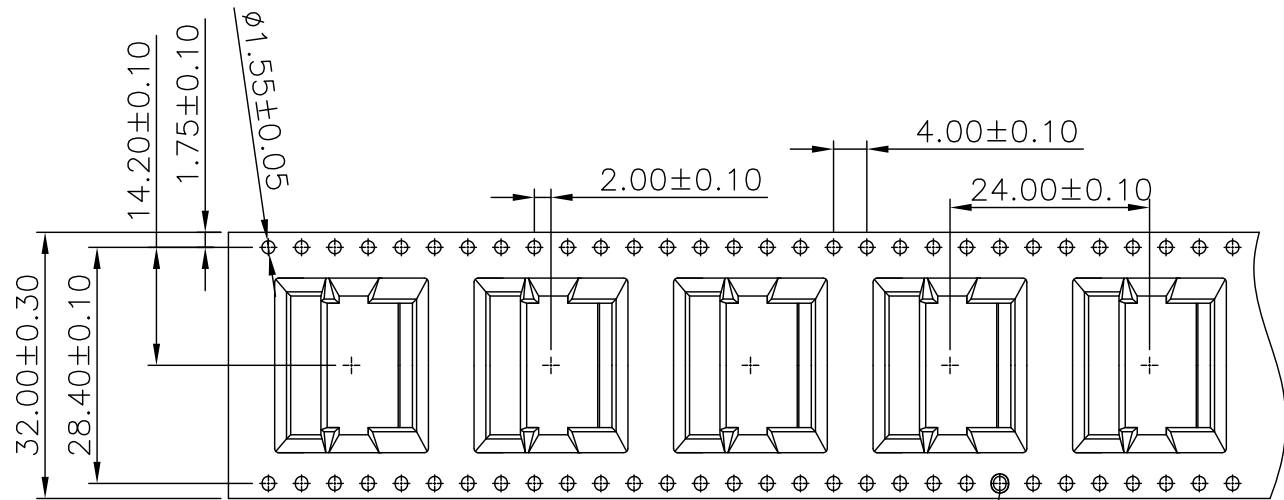
© COPYRIGHT 2009 BY TYCO ELECTRONICS CORPORATION. ALL RIGHTS RESERVED.

LOC DW

DIST

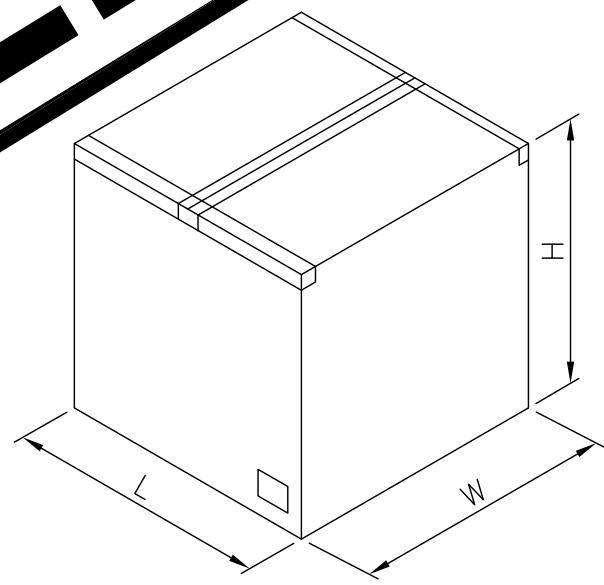
REVISIONS

P	LTR	DESCRIPTION	DATE	DWN	APVD
		SEE SHEET 1.			



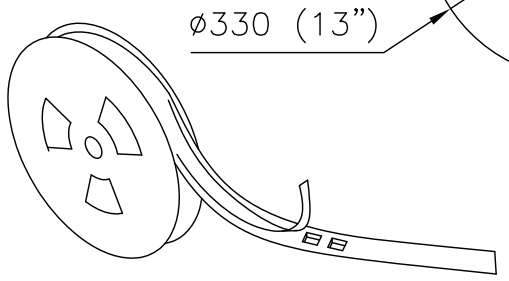
- NOTES:
- MATERIAL:
REEL: PS.
EMBOSSED CARRIER: PS.
COVER TAPE: PBT.
 - DIMENSION :
TAPE REEL: $\phi 330\text{mm} \times 37.1\text{mm}$
SHIPPING CARTON: L=350mm,W=350mm, H=350mm
 - QUANTITY :
PRIMARY PACKING: 350PCS/REEL
SECONDARY PACKING: 9 REELS/CARTON(3,150PCS).
 - WEIGHT :
NET WEIGHT: 0.55 KG/REEL, 4.85 KG/CARTON.
GROSS WEIGHT: 1.09 KG/REEL, 9.85 KG/CARTON.
 - PEELING RESISTANCE: 20G TO 130G.
PEELING SPEED: 100MM/MIN.

OBSOLETE



SHIPPING CARTON

OBSOLETE	9.85 Kg	4.85 Kg	350	9	3150	7-1734081-1
						2-1734081-3
	GROSS WEIGHT	NET WEIGHT	PCS/REEL	REELS /CARTON	QUANTITY	PART NUMBER



THIS DRAWING IS A CONTROLLED DOCUMENT.

DIMENSIONS: MM	TOLERANCES UNLESS OTHERWISE SPECIFIED: 0 PLC ± - 1 PLC ± - 2 PLC ± - 3 PLC ± - 4 PLC ± - ANGLES ± -	DWN	
MATERIAL	FINISH	CHK	
		APVD	
		PRODUCT SPEC	
		APPLICATION SPEC	NAME
		WEIGHT	USB CONNECTOR, RECEPTACLE 4 POSITION, SERIES A
		CUSTOMER DRAWING	SIZE CAGE CODE DRAWING NO RESTRICTED TO
			A3 00779 C=1734081
			SCALE SHEET 15 of 19 REV E5

THIS DRAWING IS UNPUBLISHED.

RELEASED FOR PUBLICATION

AUG ,2006.

© COPYRIGHT 2009 BY TYCO ELECTRONICS CORPORATION. ALL RIGHTS RESERVED.

LOC

DIST

REVISIONS

DW

P

LTR

DESCRIPTION

DATE

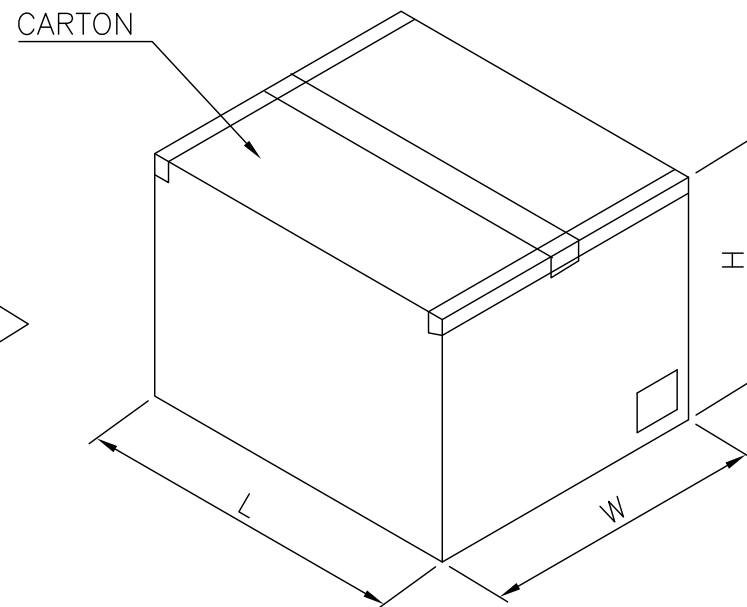
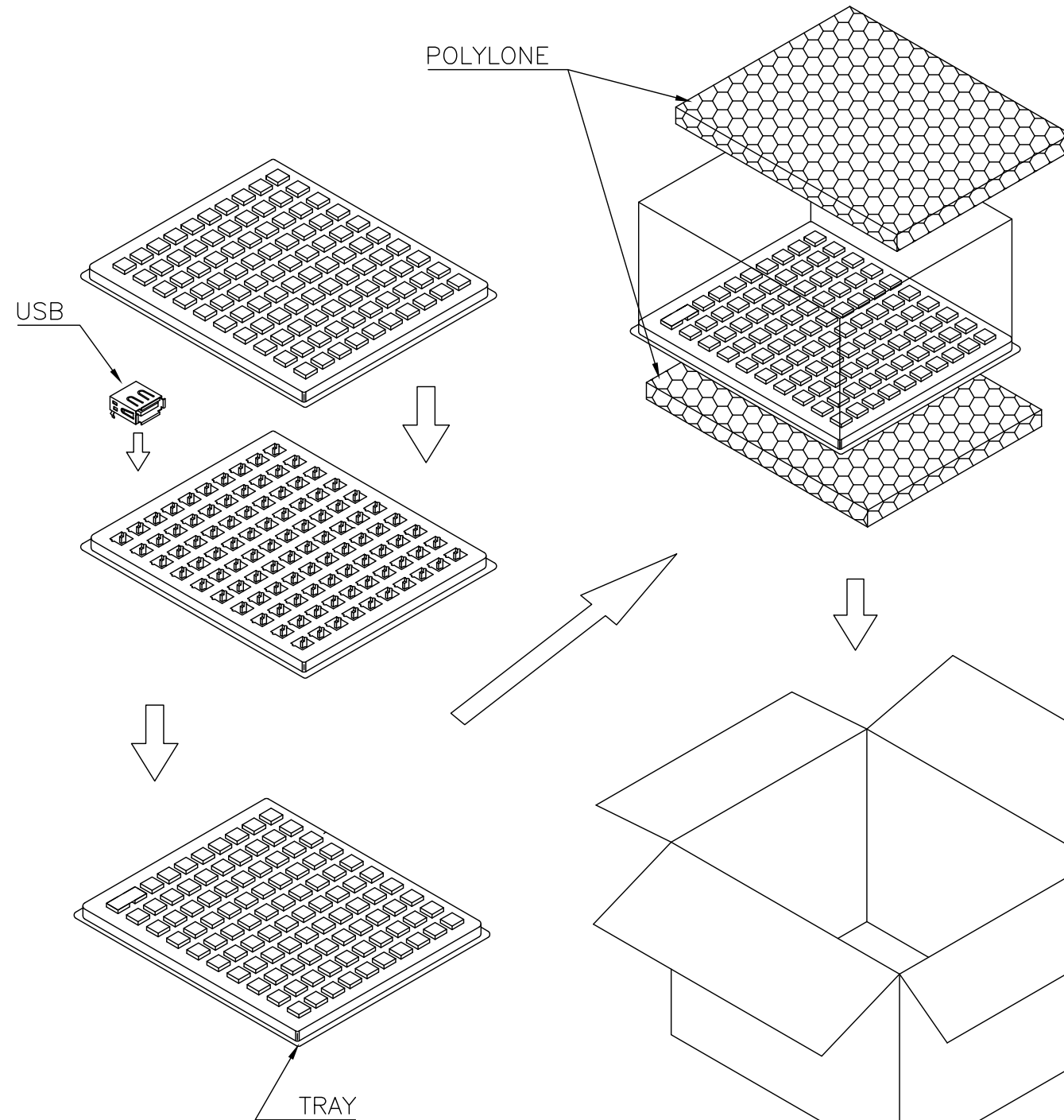
DWN

APVD

SEE SHEET 1.

NOTES:

- 1. DIMENSION :
 TRAY : L=295mm, W=252mm, H=14mm
 SHIPPING CARTON: L=315mm, W=270mm, H=200mm
 POLYSTYRENE : L=290mm, W=250mm, H=10mm
- 2. QUANTITY :
 PRIMARY PACKING: 100 PCS/TRAY
 SECONDARY PACKING: 10 TRAYS/CARTON
 (1,000PCS)
- 3. WEIGHT :
 NET WEIGHT: 2.03KG/CARTON.
 GROSS WEIGHT: 3.10KG/CARTON.



3.10 Kg	2.03 Kg	100	10	1000	4-1734081-2	OBSOLETE
					4-1734081-1	OBSOLETE
					1-1734081-1	
					1734081-2	OBSOLETE
					1734081-1	
GROSS WEIGHT	NET WEIGHT	PCS/TRAY	TRAY /CARTON	QUANTITY	PART NUMBER	

THIS DRAWING IS A CONTROLLED DOCUMENT.

DIMENSIONS: MM	TOLERANCES UNLESS OTHERWISE SPECIFIED: 0 PLC ± - 1 PLC ± - 2 PLC ± - 3 PLC ± - 4 PLC ± - ANGLES ± -	DWN	TE Connectivity NAME USB CONNECTOR, RECEPTACLE 4 POSITION, SERIES A
MATERIAL	FINISH	CHK	
		APVD	
		PRODUCT SPEC	
		APPLICATION SPEC	SIZE
		WEIGHT	CAGE CODE
		CUSTOMER DRAWING	DRAWING NO
			RESTRICTED TO
			SCALE
			SHEET
			REV

D

D

C

C

B

B

A

A

THIS DRAWING IS UNPUBLISHED.

RELEASED FOR PUBLICATION

AUG ,2006.

© COPYRIGHT 2009 BY TYCO ELECTRONICS CORPORATION. ALL RIGHTS RESERVED.

LOC

DIST

REVISIONS

DW

P

LTR

DESCRIPTION

DATE

DWN

APVD

SEE SHEET 1.

NOTES:

1. MATERIAL:

TRAY: PE.

POLYLONE:POLYLONE

SHIPPING CARTON: CORRUGATED FIBER.

2. DIMENSION :

TUBE : L=370mm, W=18.7mm, H=10.1mm

SHIPPING CARTON : L=390mm, W=165mm, H=90mm

3. QUANTITY :

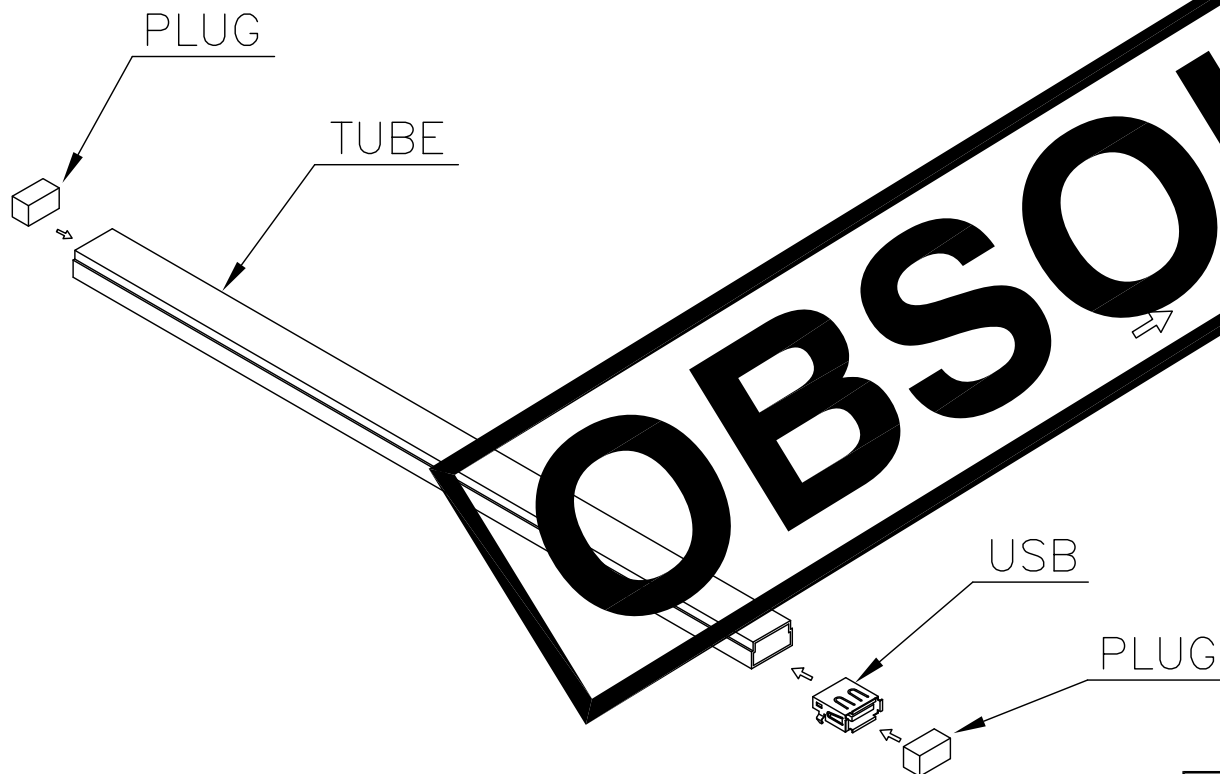
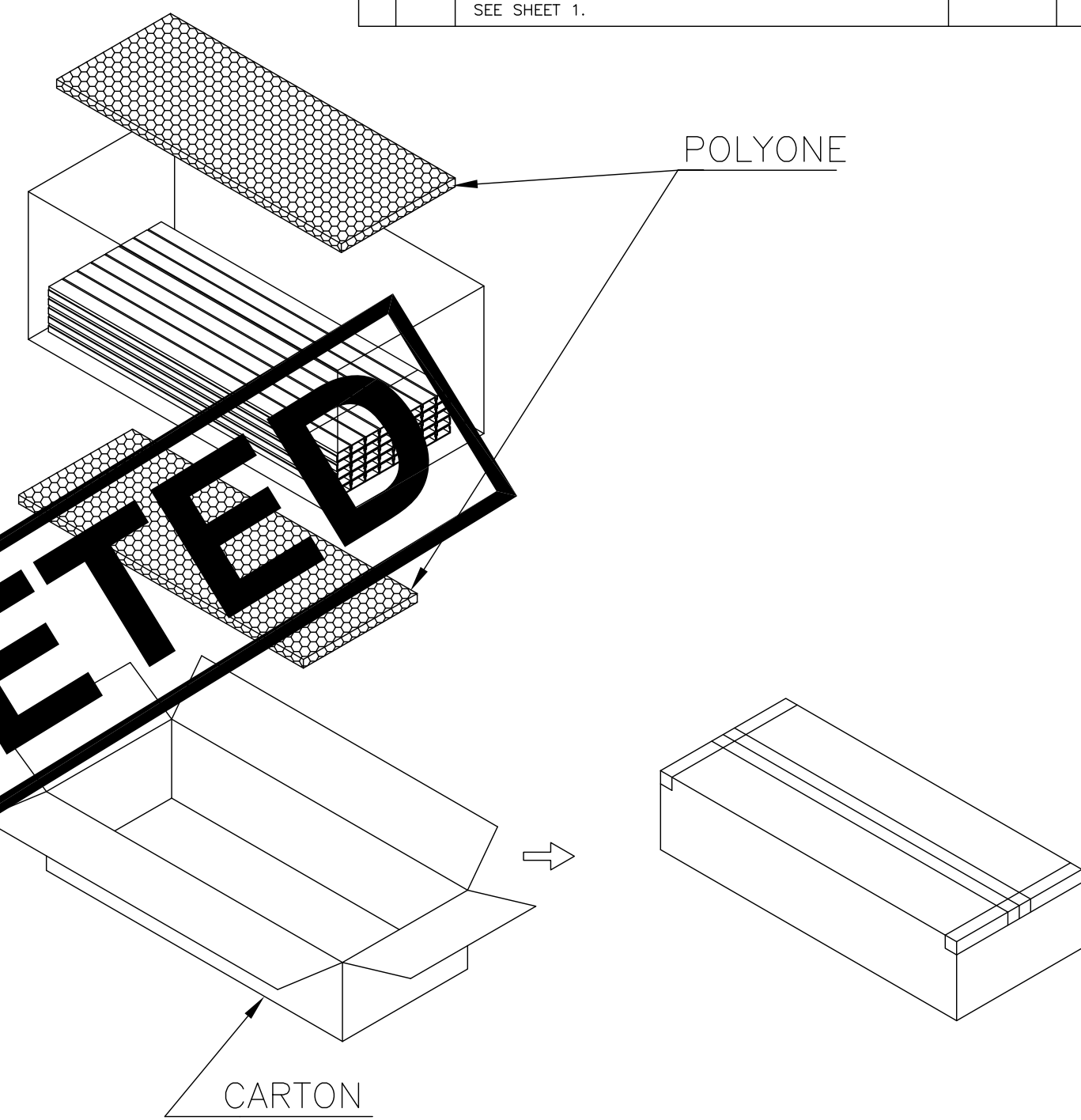
25 PCS/TUBE

40 TUBES/INNER BOX(1,000PCS)

4. WEIGHT :

NET WEIGHT : 1.54 KG

GROSS WEIGHT : 2.45 KG



OBSOLETE	2.45 Kg	1.54 Kg	25	40	1000	2-1734081-2
						2-1734081-1
	GROSS WEIGHT	NET WEIGHT	PCS/TUBE	TUBES /CARTON	QUANTITY	PART NUMBER

THIS DRAWING IS A CONTROLLED DOCUMENT.		DWN				
DIMENSIONS: MM		CHK				
TOLERANCES UNLESS OTHERWISE SPECIFIED:		APVD	NAME			
0 PLC ± -		PRODUCT SPEC	USB CONNECTOR, RECEPTACLE 4 POSITION, SERIES A			
1 PLC ± -		APPLICATION SPEC	SIZE	CAGE CODE	DRAWING NO	RESTRICTED TO
2 PLC ± -		WEIGHT	A3	00779	C=1734081	-
3 PLC ± -		CUSTOMER DRAWING	SCALE	SHEET	REV	
4 PLC ± -			-	17 of 19	E5	
ANGLES ± -						
MATERIAL						
FINISH						

THIS DRAWING IS UNPUBLISHED.

RELEASED FOR PUBLICATION

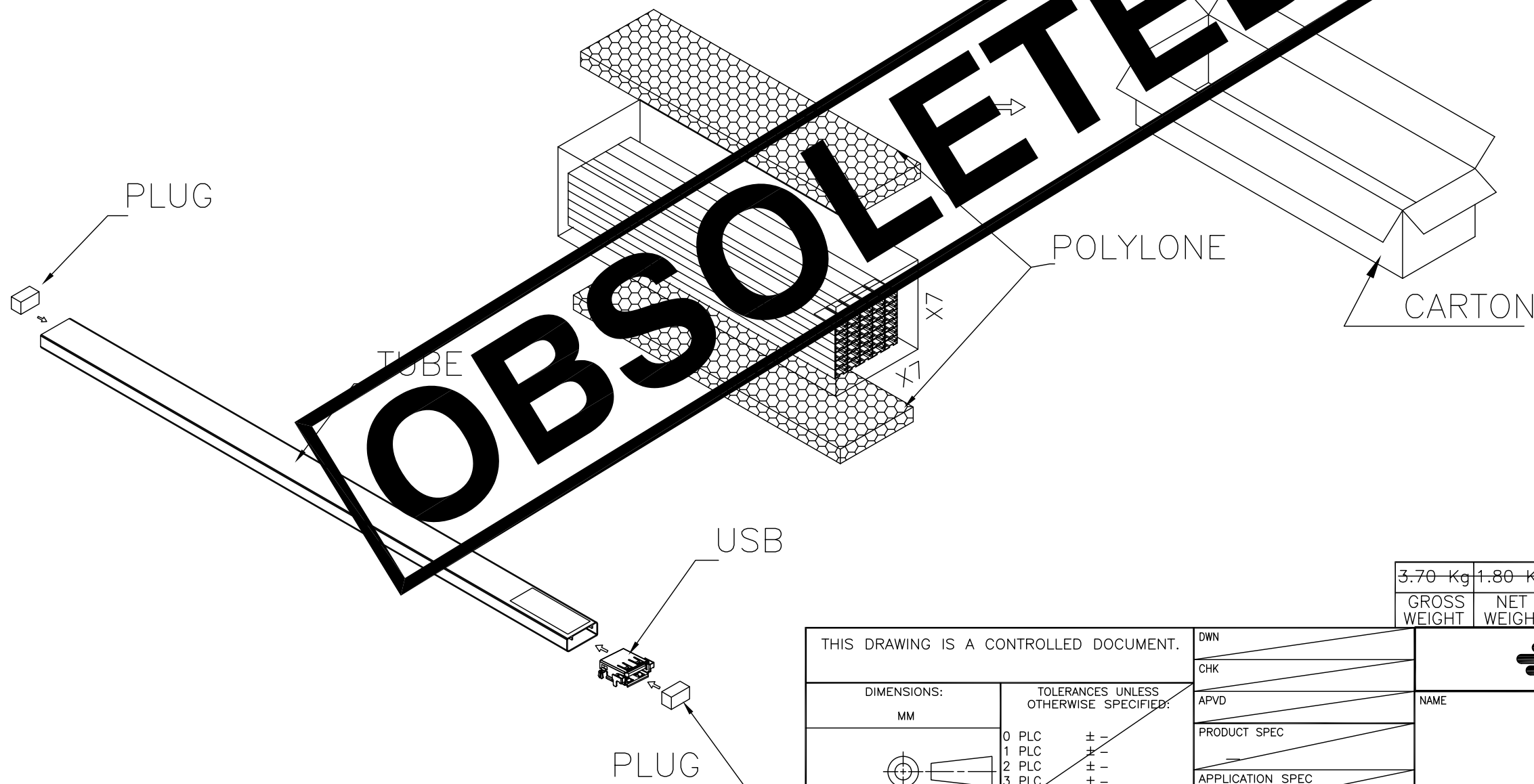
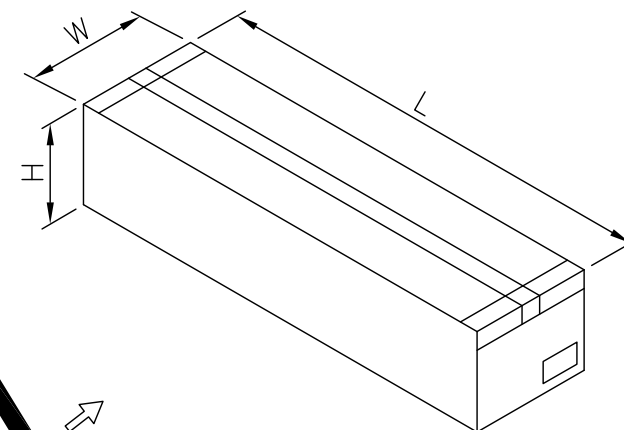
AUG ,2006.

© COPYRIGHT 2009 BY TYCO ELECTRONICS CORPORATION. ALL RIGHTS RESERVED.

LOC	DIST	REVISIONS					
DW		P	LTR	DESCRIPTION	DATE	DWN	APVD
				SEE SHEET 1.			

NOTE:

- MATERIAL:
TRAY: PE.
POLYLONE:POLYLONE
SHIPPING CARTON: CORRUGATED FIBER.
- DIMENSION :
TUBE : L=370mm, W=21.8mm, H=8.6mm
SHIPPING CARTON : L=390mm, W=165mm, H=90mm
- QUANTITY :
25 PCS/TUBE
49 TUBES/INNER BOX(1,225PCS)
- WEIGHT :
NET WEIGHT : 1.80 KG
GROSS WEIGHT : 3.70 KG



3.70 Kg	1.80 Kg	25	49	1225	6-1734081-1
GROSS WEIGHT	NET WEIGHT	PCS/TUBE	TUBES /CARTON	QUANTITY	PART NUMBER

THIS DRAWING IS A CONTROLLED DOCUMENT.		DWN	STE TE Connectivity		
DIMENSIONS: MM		CHK			
TOLERANCES UNLESS OTHERWISE SPECIFIED:		APVD	NAME		
0 PLC ± -		PRODUCT SPEC	USB CONNECTOR, RECEPTACLE 4 POSITION, SERIES A		
1 PLC ± -		APPLICATION SPEC	SIZE	CAGE CODE	DRAWING NO
2 PLC ± -		WEIGHT	A3	00779	C=1734081
3 PLC ± -		CUSTOMER DRAWING	RESTRICTED TO		
4 PLC ± -			SCALE		SHEET
ANGLES ± -			-		18 of 19
MATERIAL			REV		E5
FINISH					

THIS DRAWING IS UNPUBLISHED.

RELEASED FOR PUBLICATION

AUG ,2006.

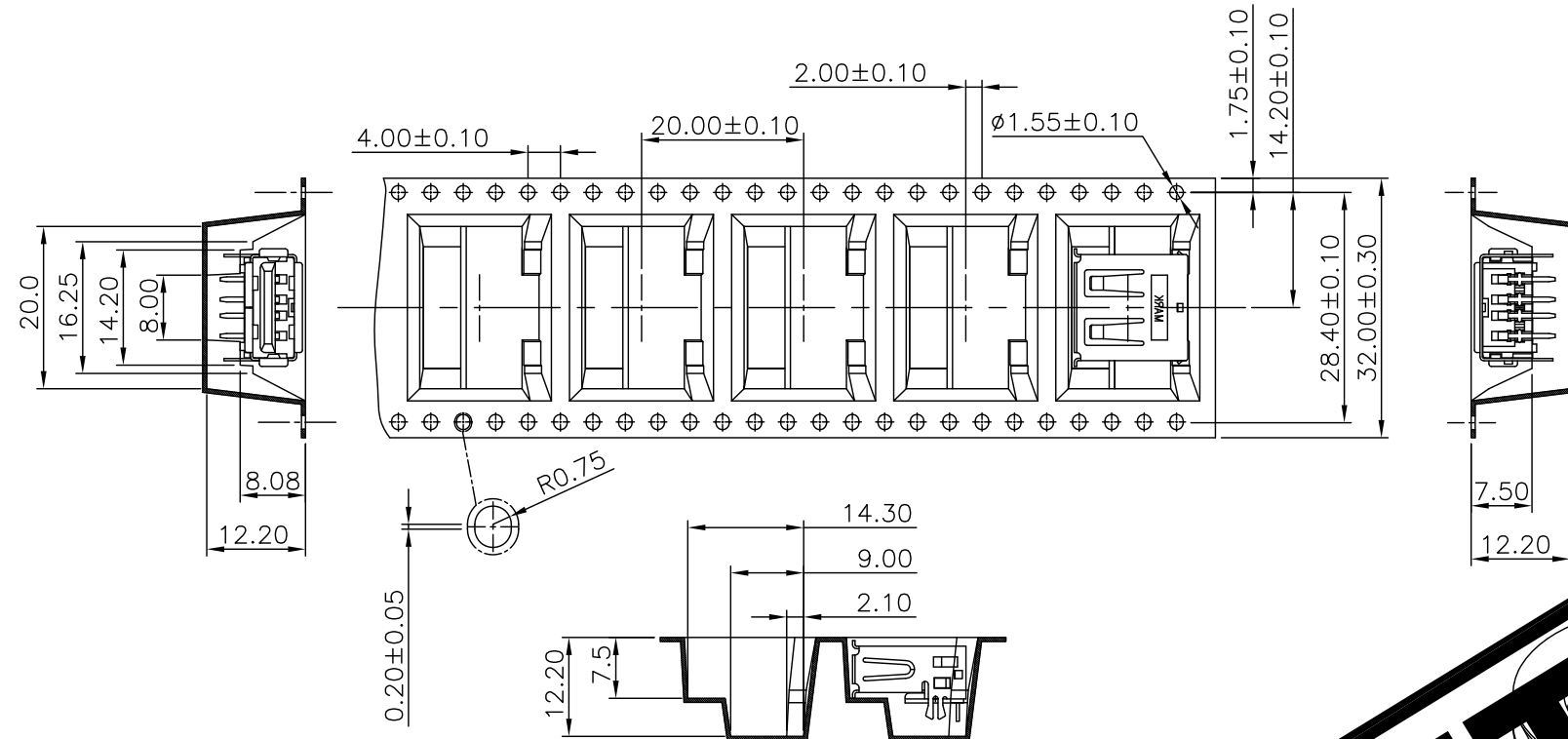
© COPYRIGHT 2009 BY TYCO ELECTRONICS CORPORATION. ALL RIGHTS RESERVED.

LOC DW

DIST

REVISIONS

P	LTR	DESCRIPTION	DATE	DWN	APVD
		SEE SHEET 1.			



NOTES:

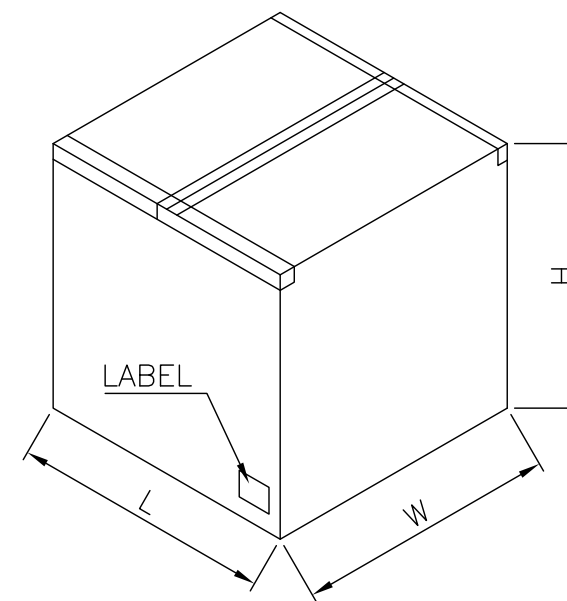
- MATERIAL:
REEL: PS.
EMBOSSED CARRIER: PS.
COVER TAPE: PBT.
- DIMENSION:
SHIPPING CARTON: L=350mm,W=350mm, H=350mm
- PEELING RESISTANCE: 20G TO 130G.
PEELING SPEED: 300MM/MIN.

PULL OUT DIRECTION

OBSOLETE

LABEL

SHIPPING CARTON



9.50 Kg	4.52 Kg	250	9	2250	1 1734081 5
GROSS WEIGHT	NET WEIGHT	PCS/REEL	REELS /CARTON	QUANTITY	PART NUMBER

THIS DRAWING IS A CONTROLLED DOCUMENT.		DWN	STE TE Connectivity		
DIMENSIONS: MM		CHK			
TOLERANCES UNLESS OTHERWISE SPECIFIED:		APVD	NAME		
0 PLC ± -		PRODUCT SPEC	USB CONNECTOR, RECEPTACLE 4 POSITION, SERIES A		
1 PLC ± -		APPLICATION SPEC	SIZE	CAGE CODE	DRAWING NO
2 PLC ± -		WEIGHT	A3	00779	C=1734081
3 PLC ± -		CUSTOMER DRAWING	RESTRICTED TO		
4 PLC ± -			SCALE		SHEET
ANGLES ± -			19 of 19		REV E5
FINISH					

