



Chipsmall Limited consists of a professional team with an average of over 10 year of expertise in the distribution of electronic components. Based in Hongkong, we have already established firm and mutual-benefit business relationships with customers from,Europe,America and south Asia,supplying obsolete and hard-to-find components to meet their specific needs.

With the principle of “Quality Parts,Customers Priority,Honest Operation,and Considerate Service”,our business mainly focus on the distribution of electronic components. Line cards we deal with include Microchip,ALPS,ROHM,Xilinx,Pulse,ON,Everlight and Freescale. Main products comprise IC,Modules,Potentiometer,IC Socket,Relay,Connector.Our parts cover such applications as commercial,industrial, and automotives areas.

We are looking forward to setting up business relationship with you and hope to provide you with the best service and solution. Let us make a better world for our industry!



## Contact us

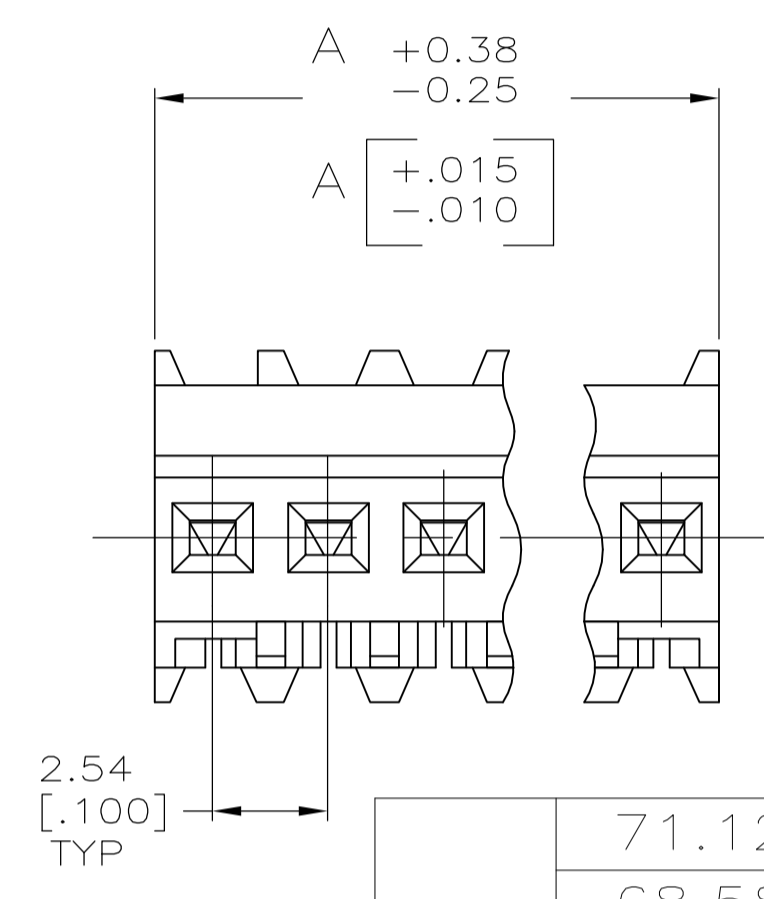
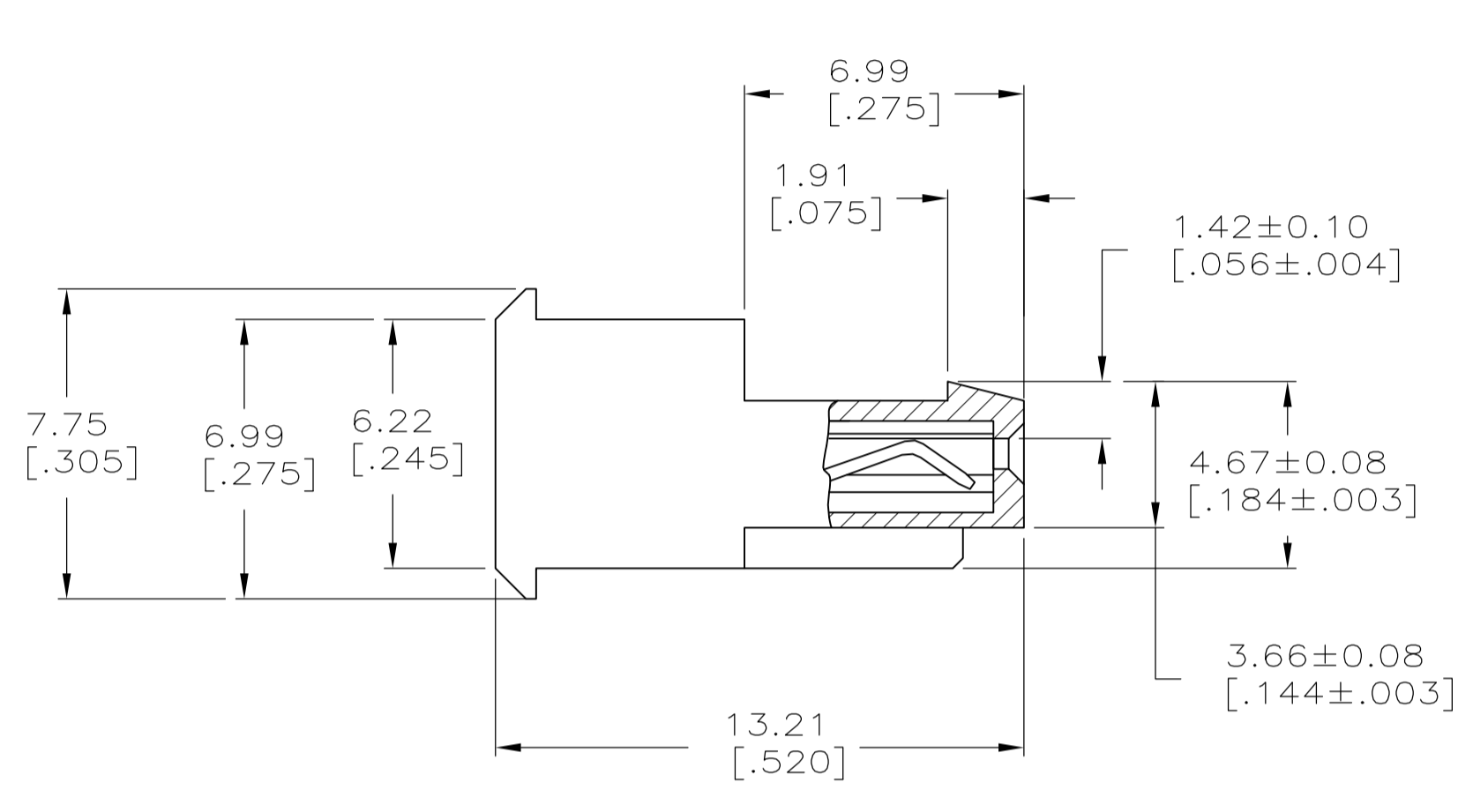
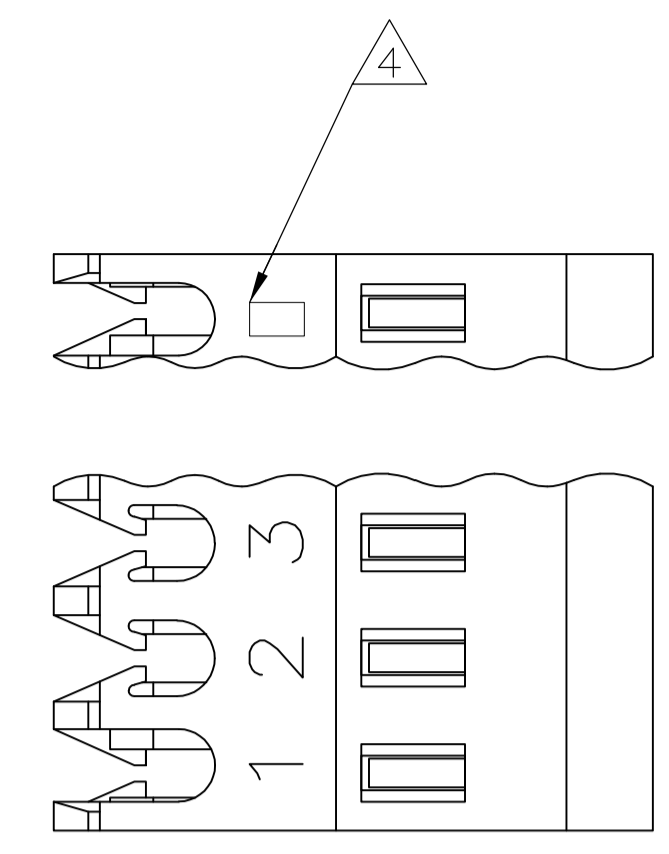
Tel: +86-755-8981 8866 Fax: +86-755-8427 6832

Email & Skype: info@chipsmall.com Web: www.chipsmall.com

Address: A1208, Overseas Decoration Building, #122 Zhenhua RD., Futian, Shenzhen, China



LOC		DIST		REVISIONS			
CM	00	REV	DATE	BY	APPV	DATE	BY
R		REVISED PER ECO-12-007595	03AUG12	KH	SM		



- 1 MATERIAL: CONNECTOR-NYLON UL94V-0.  
CONTACTS-0.30 [.012] THICK COPPER ALLOY  
0.00038 [.000015] GOLD OR 0.00038 [.000015]  
TOTAL GOLD FLASH OVER PALLADIUM NICKEL,  
PER TE CONNECTIVITY'S DISCRETION, IN CONTACT  
AREA WITH BRIGHT TIN-LEAD FOR 641190-2 THRU  
2-641190-8, MATTE WHISKER MITIGATED TIN  
FOR 3-641190-2 THRU 5-641190-8 OVER  
NICKEL UNDERPLATE.
- 2 CONTACTS ACCEPT 22 AWG WIRE WITH 1.52 [.060] MAX INSULATION  
DIAMETER.
- 3 CONTACTS MUST ACCEPT 0.64±0.03 [.025±.001] SQUARE POST AND  
REMAIN LOCKED IN POSITION.
- 4 IDENTIFICATION NUMBER FOR LAST CIRCUIT MAY NOT APPEAR ON ALL  
ASSEMBLIES.
- 5 DIMENSIONS IN BRACKETS ARE IN INCHES.
- 6 HOUSING FEATURES ARE: FEED THRU WITH LOCKING RAMP.
- 7 OBSOLETE PARTS: OBSOLETE CIS STREAMLINING PER  
D.RENAUD/D.SINISI
- 8 RED COLOR STRIPE ON HOUSING (NOT SHOWN) MAY RUN DOWN BETWEEN RIBS.

DIM A	NO.OF POSN	ASSEMBLY
71.12 [2.800]	28	5-641198-8
68.58 [2.700]	27	5-641198-7
66.04 [2.600]	26	5-641198-6
63.50 [2.500]	25	5-641198-5
60.96 [2.400]	24	5-641198-4
58.42 [2.300]	23	5-641198-3
55.88 [2.200]	22	5-641198-2
53.34 [2.100]	21	5-641198-1
50.80 [2.000]	20	5-641198-0
48.26 [1.900]	19	4-641198-9
45.72 [1.800]	18	4-641198-8
43.18 [1.700]	17	4-641198-7
40.64 [1.600]	16	4-641198-6
38.10 [1.500]	15	4-641198-5
35.56 [1.400]	14	4-641198-4
33.02 [1.300]	13	4-641198-3
30.48 [1.200]	12	4-641198-2
27.94 [1.100]	11	4-641198-1
25.40 [1.000]	10	4-641198-0
22.86 [.900]	9	3-641198-9
20.32 [.800]	8	3-641198-8
17.78 [.700]	7	3-641198-7
15.24 [.600]	6	3-641198-6
12.70 [.500]	5	3-641198-5
10.16 [.400]	4	3-641198-4
7.62 [.300]	3	3-641198-3
5.08 [.200]	2	3-641198-2
DIM A	NO.OF POSN	ASSEMBLY

SUPERCEDED

7

SUPERCEDED

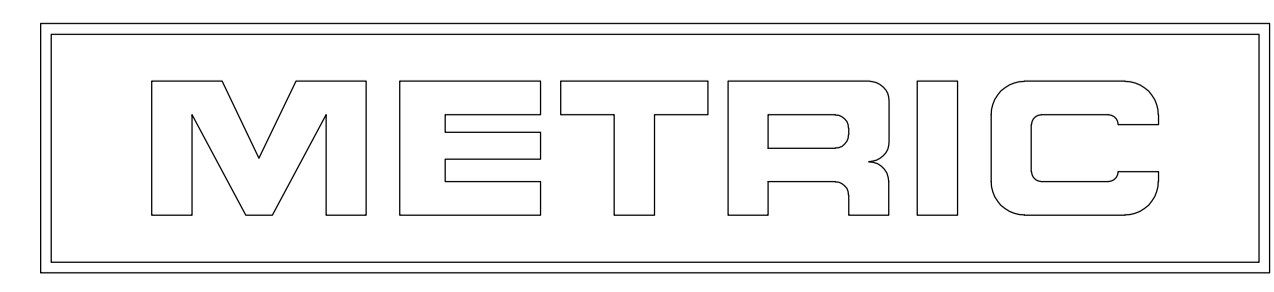
7

SUPERCEDED

7

DIM A	NO.OF POSN	ASSEMBLY
71.12 [2.800]	28	2-641198-8
68.58 [2.700]	27	2-641198-7
66.04 [2.600]	26	2-641198-6
63.50 [2.500]	25	2-641198-5
60.96 [2.400]	24	2-641198-4
58.42 [2.300]	23	2-641198-3
55.88 [2.200]	22	2-641198-2
53.34 [2.100]	21	2-641198-1
50.80 [2.000]	20	2-641198-0
48.26 [1.900]	19	1-641198-9
45.72 [1.800]	18	1-641198-8
43.18 [1.700]	17	1-641198-7
40.64 [1.600]	16	1-641198-6
38.10 [1.500]	15	1-641198-5
35.56 [1.400]	14	1-641198-4
33.02 [1.300]	13	1-641198-3
30.48 [1.200]	12	1-641198-2
27.94 [1.100]	11	1-641198-1
25.40 [1.000]	10	1-641198-0
22.86 [.900]	9	—641198-9
20.32 [.800]	8	—641198-8
17.78 [.700]	7	—641198-7
15.24 [.600]	6	—641198-6
12.70 [.500]	5	641198-5
10.16 [.400]	4	—641198-4
7.62 [.300]	3	—641198-3
5.08 [.200]	2	641198-2
DIM A	NO.OF POSN	ASSEMBLY

CONTAINS LEAD



THIS DRAWING IS A CONTROLLED DOCUMENT.

DIN S. HOOVER 20-DEC-2004  
CHK: D. ROSSI 20-DEC-2004  
APPV: D. ROSSI 20-DEC-2004

TE Connectivity

MTA .100 CONNECTOR ASSEMBLY, 22 AWG, STANDARD

SIZE: A1 CAGE CODE: 00779C DRAWING NO: 641198

SCALE: 6:1 SHEET 1 OF 1 REV R