



Chipsmall Limited consists of a professional team with an average of over 10 year of expertise in the distribution of electronic components. Based in Hongkong, we have already established firm and mutual-benefit business relationships with customers from,Europe,America and south Asia,supplying obsolete and hard-to-find components to meet their specific needs.

With the principle of "Quality Parts,Customers Priority,Honest Operation,and Considerate Service",our business mainly focus on the distribution of electronic components. Line cards we deal with include Microchip,ALPS,ROHM,Xilinx,Pulse,ON,Everlight and Freescale. Main products comprise IC,Modules,Potentiometer,IC Socket,Relay,Connector.Our parts cover such applications as commercial,industrial, and automotives areas.

We are looking forward to setting up business relationship with you and hope to provide you with the best service and solution. Let us make a better world for our industry!



## Contact us

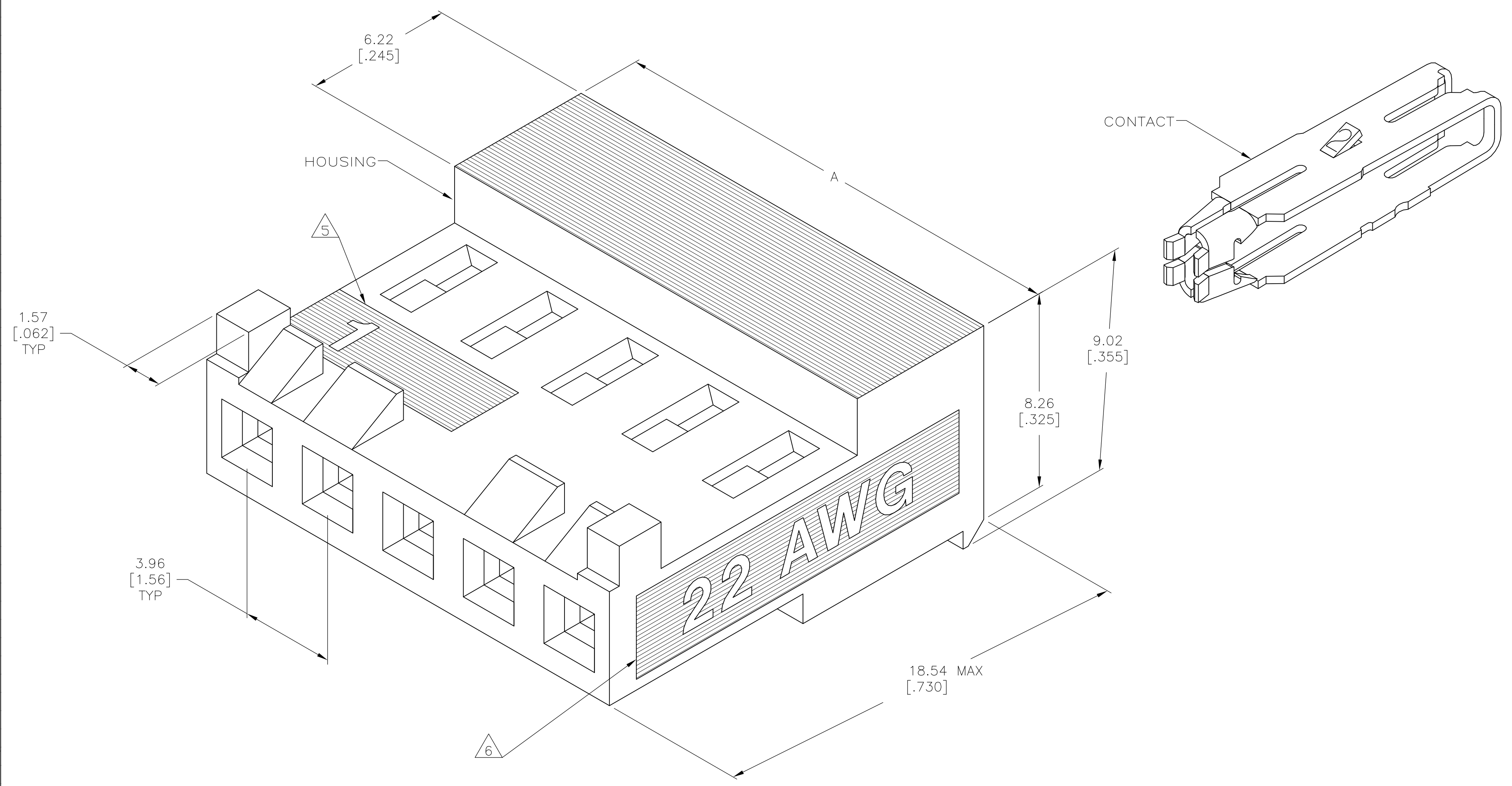
Tel: +86-755-8981 8866 Fax: +86-755-8427 6832

Email & Skype: info@chipsmall.com Web: www.chipsmall.com

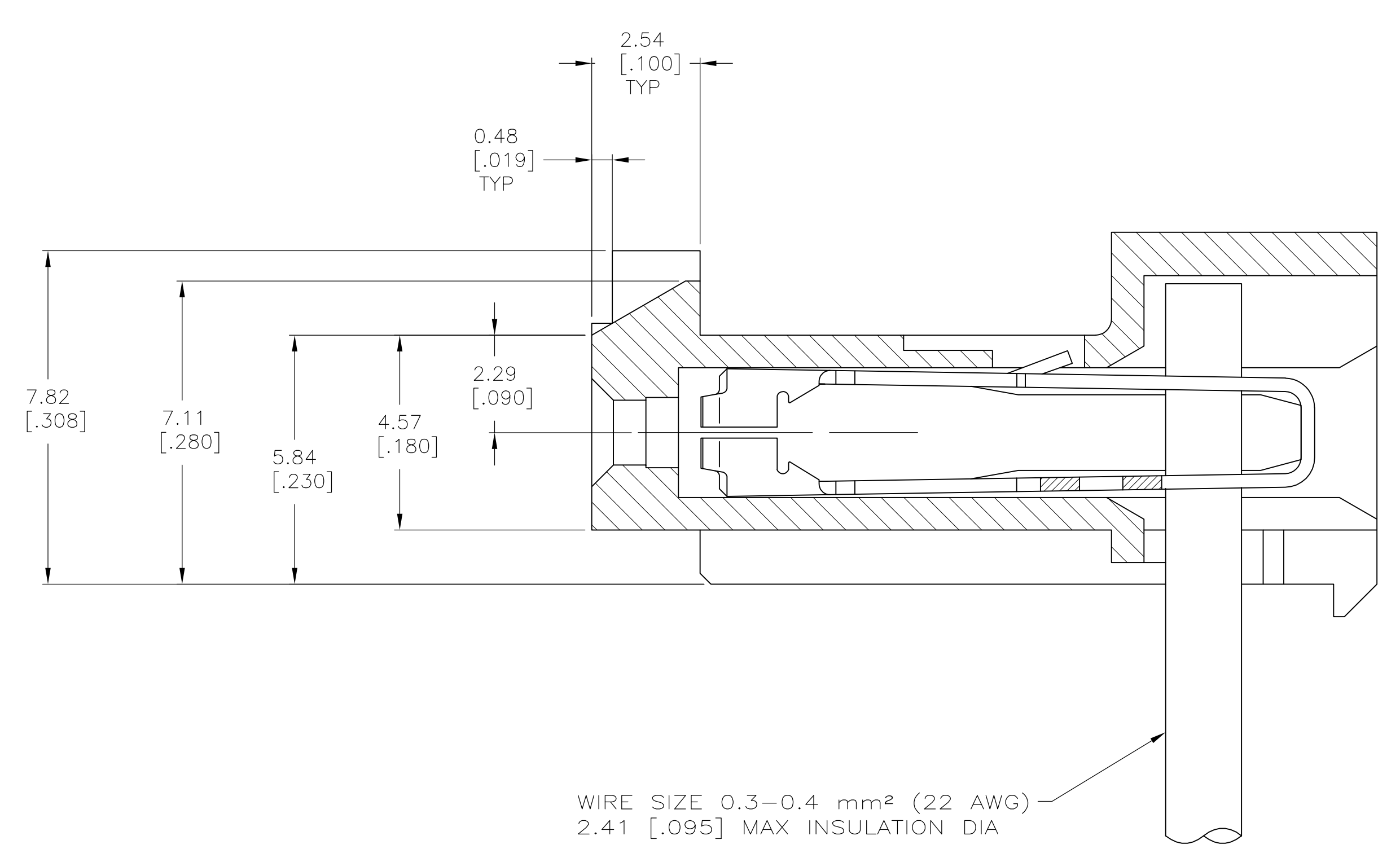
Address: A1208, Overseas Decoration Building, #122 Zhenhua RD., Futian, Shenzhen, China



LOC		DIST		REVISIONS			
P	LTR	DESCRIPTION	DATE	DMN	APVD		
D		ECO-07-012895	22JUN07	KW	DB		
D1		REVISED PER ECO-09-022908	08OCT09	KK	AEG		



1. OPERATING TEMPERATURE: -55°C TO 105°C
2. MATERIAL: HOUSING, NYLON 6/6, UL 94V-0, BLACK CONTACT, 0.30 [.012] THICK COPPER ALLOY
3. FINISH: BRIGHT TIN-LEAD PLATE 0.00203-0.00508 [.000080-.000200"] THICK OR MATTE WHISKER MITIGATED TIN 0.00203 [.000080] MIN THICKNESS OVER NICKEL UNDERPLATE.
4. LUBRICATED WITH AMP ANTI-FRETTING LUBRICANT.
5. IDENTIFICATION NUMBER FOR FIRST CIRCUIT.
6. WIRE GAUGE IDENTIFICATION
7. DIMENSIONS IN BRACKETS ARE IN INCHES.
8. CONTACT MUST ACCEPT 1.14±0.03 [.045±.001] SQUARE POST AND REMAINED LOCKED IN POSITION.
9. OBSOLETE PARTS: OBSOLETE CIS STREAMLINING PER D.RENAUD/D.SINISI



TIN	47.55±0.30	[1.872±.012]	12	4-644383-2
TIN	43.59±0.30	[1.716±.012]	11	4-644383-1
TIN	39.62±0.30	[1.560±.012]	10	4-644383-0
TIN	35.66±0.30	[1.404±.012]	9	3-644383-9
TIN	31.70±0.30	[1.248±.012]	8	3-644383-8
TIN	27.74±0.30	[1.092±.012]	7	3-644383-7
TIN	23.77±0.30	[.936±.012]	6	3-644383-6
TIN	19.81±0.30	[.780±.012]	5	3-644383-5
TIN	15.85±0.15	[.624±.006]	4	3-644383-4
TIN	11.89±0.15	[.468±.006]	3	3-644383-3
TIN	7.92±0.15	[.312±.006]	2	3-644383-2
TIN-LEAD	47.55±0.30	[1.872±.012]	12	1-644383-2
9 SUPERCEDED TIN-LEAD	43.59±0.30	[1.716±.012]	11	1-644383-1
9 SUPERCEDED TIN-LEAD	39.62±0.30	[1.560±.012]	10	1-644383-0
9 SUPERCEDED TIN-LEAD	35.66±0.30	[1.404±.012]	9	644383-9
9 SUPERCEDED TIN-LEAD	31.70±0.30	[1.248±.012]	8	644383-8
TIN-LEAD	27.74±0.30	[1.092±.012]	7	644383-7
9 SUPERCEDED TIN-LEAD	23.77±0.30	[.936±.012]	6	644383-6
9 SUPERCEDED TIN-LEAD	19.81±0.30	[.780±.012]	5	644383-5
TIN-LEAD	15.85±0.15	[.624±.006]	4	644383-4
9 SUPERCEDED TIN-LEAD	11.89±0.15	[.468±.006]	3	644383-3
9 SUPERCEDED TIN-LEAD	7.92±0.15	[.312±.006]	2	644383-2

THIS DRAWING IS A CONTROLLED DOCUMENT.		DMN C. MARTIN 23 APR 90	Tyco Electronics Corporation Harrisburg, PA 17105-3608
DIMENSIONS: mm [INCHES]		CHK R. SWING 23 APR 90	
TOLERANCES UNLESS OTHERWISE SPECIFIED:		APVD G. MILLER 24 APR 90	NAME MTA-156 CONNECTOR ASSEMBLY, QUAD, 22 AWG, WITH LOCKING RAMP, WITH POLARIZING TAB
0 PLC ± - 1 PLC ± - 2 PLC ± - 3 PLC ± 0.13 [.005] 4 PLC ± - ANGLES ± -		PRODUCT SPEC 108-1219	RESTRICTED TO
MATERIAL		APPLICATION SPEC 114-1048	SIZE A1
FINISH		WEIGHT	SCALE 10:1
CUSTOMER DRAWING		NO OF CKTS A	SHEET 1 OF 1
		PART NO	REV D1