



Chipsmall Limited consists of a professional team with an average of over 10 year of expertise in the distribution of electronic components. Based in Hongkong, we have already established firm and mutual-benefit business relationships with customers from,Europe,America and south Asia,supplying obsolete and hard-to-find components to meet their specific needs.

With the principle of “Quality Parts,Customers Priority,Honest Operation,and Considerate Service”,our business mainly focus on the distribution of electronic components. Line cards we deal with include Microchip,ALPS,ROHM,Xilinx,Pulse,ON,Everlight and Freescale. Main products comprise IC,Modules,Potentiometer,IC Socket,Relay,Connector.Our parts cover such applications as commercial,industrial, and automotives areas.

We are looking forward to setting up business relationship with you and hope to provide you with the best service and solution. Let us make a better world for our industry!



Contact us

Tel: +86-755-8981 8866 Fax: +86-755-8427 6832

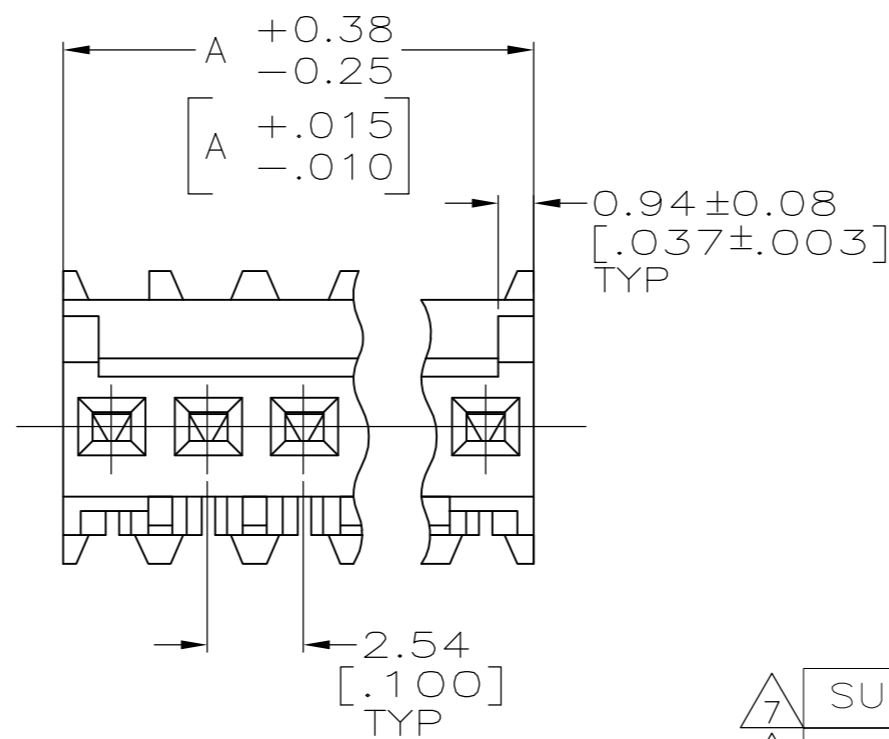
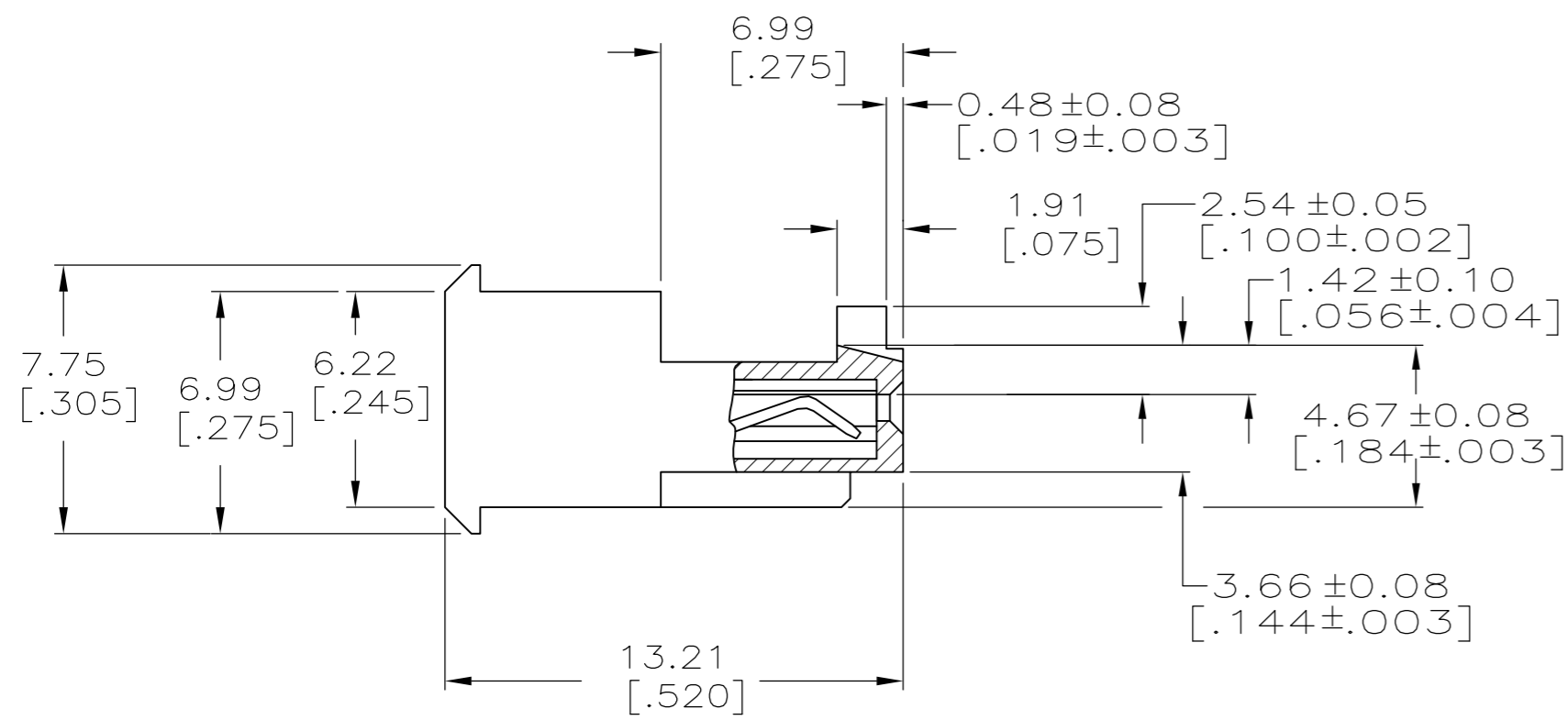
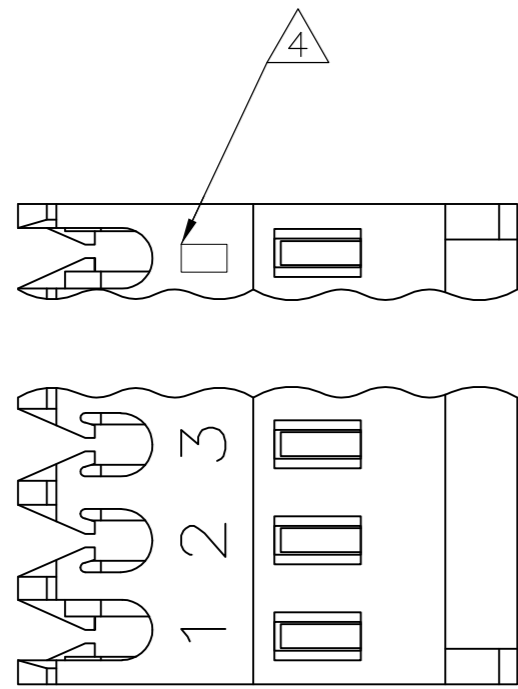
Email & Skype: info@chipsmall.com Web: www.chipsmall.com

Address: A1208, Overseas Decoration Building, #122 Zhenhua RD., Futian, Shenzhen, China



THIS DRAWING IS UNPUBLISHED. RELEASED FOR PUBLICATION
 © COPYRIGHT - By - ALL RIGHTS RESERVED.

LOC		DIST		REVISIONS			
P	LTR	DESCRIPTION		DATE	DWN	APVD	
CM	00	B2		REVISED PER ECO-11-014117	18JUL11	HMR SM	



LEAD	LEAD	LEAD	LEAD
38.10	[1.500]	15	4-644578-5
35.56	[1.400]	14	4-644578-4
33.02	[1.300]	13	4-644578-3
30.48	[1.200]	12	4-644578-2
27.94	[1.100]	11	4-644578-1
25.40	[1.000]	10	4-644578-0
22.86	[.900]	9	3-644578-9
20.32	[.800]	8	3-644578-8
17.78	[.700]	7	3-644578-7
15.24	[.600]	6	3-644578-6
12.70	[.500]	5	3-644578-5
10.16	[.400]	4	3-644578-4
7.62	[.300]	3	3-644578-3
5.08	[.200]	2	3-644578-2

MATERIAL: CONNECTOR-NYLON UL94V-0 (BLACK)
 CONTACTS-0.30 [.012] THICK COPPER ALLOY
 BRIGHT TIN-LEAD 0.00203 [.000080] MIN THICK FOR CONTACTS
 644578-2 THRU 1-644578-5
 MATTE WHISKER MITIGATED TIN PLATE 0.00203 [.000080] MIN THICK
 OVER 0.00076 [.000030] MIN THICK NICKEL FOR CONTACTS
 3-644578-2 THRU 4-644578-5

2. CONTACTS ACCEPT 22 AWG WIRE WITH 1.52 [.060] MAX INSULATION DIAMETER.

3. CONTACTS MUST ACCEPT 0.64±0.03 [.025±.001] SQUARE POST AND REMAIN LOCKED IN POSITION.

4. IDENTIFICATION NUMBER FOR LAST CIRCUIT MAY NOT APPEAR ON ALL ASSEMBLIES.

5. DIMENSIONS IN BRACKETS ARE IN INCHES.

6. HOUSING FEATURES ARE: FEED THRU WITH LOCKING RAMP AND WITH POLARIZING TAB.

7. OBSOLETE PARTS: OBSOLETE CIS STREAMLINING PER D.RENAUD/D.SINISI

7 SUPERSEDED
7 SUPERSEDED

7 SUPERSEDED

7 SUPERSEDED
 OBSOLETE

CONTAINS LEAD	CONTAINS LEAD	CONTAINS LEAD	CONTAINS LEAD
38.10	[1.500]	15	1-644578-5
35.56	[1.400]	14	1-644578-4
33.02	[1.300]	13	1-644578-3
30.48	[1.200]	12	1-644578-2
27.94	[1.100]	11	1-644578-1
25.40	[1.000]	10	1-644578-0
22.86	[.900]	9	644578-9
20.32	[.800]	8	644578-8
17.78	[.700]	7	644578-7
15.24	[.600]	6	644578-6
12.70	[.500]	5	644578-5
10.16	[.400]	4	644578-4
7.62	[.300]	3	644578-3
5.08	[.200]	2	644578-2

DIM A NO.OF POSN ASSEMBLY

METRIC

THIS DRAWING IS A CONTROLLED DOCUMENT.		DWN S. HOOVER 03-DEC-2004	STE TE Connectivity	
DIMENSIONS: mm [INCHES]		CHK D. BOSSI 03-DEC-2004		
TOLERANCES UNLESS OTHERWISE SPECIFIED:		APVD D. BOSSI 03-DEC-2004	NAME MTA .100 CONNECTOR ASSEMBLY 22 AWG, UL94V-0, SPECIAL	
0 PLC ±	1 PLC ±	PRODUCT SPEC 108-1050	SIZE A2	CAGE CODE 00779
2 PLC ± 0.13 [.005]	3 PLC ±	APPLICATION SPEC 114-1019	DRAWING NO C=644578	RESTRICTED TO
4 PLC ±	ANGLES ±	MATERIAL 1	WEIGHT	SCALE 5:1
FINISH 1		CUSTOMER DRAWING		SHEET 1 OF 1
				REV B2