



Chipsmall Limited consists of a professional team with an average of over 10 year of expertise in the distribution of electronic components. Based in Hongkong, we have already established firm and mutual-benefit business relationships with customers from,Europe,America and south Asia,supplying obsolete and hard-to-find components to meet their specific needs.

With the principle of "Quality Parts,Customers Priority,Honest Operation,and Considerate Service",our business mainly focus on the distribution of electronic components. Line cards we deal with include Microchip,ALPS,ROHM,Xilinx,Pulse,ON,Everlight and Freescale. Main products comprise IC,Modules,Potentiometer,IC Socket,Relay,Connector.Our parts cover such applications as commercial,industrial, and automotives areas.

We are looking forward to setting up business relationship with you and hope to provide you with the best service and solution. Let us make a better world for our industry!



Contact us

Tel: +86-755-8981 8866 Fax: +86-755-8427 6832

Email & Skype: info@chipsmall.com Web: www.chipsmall.com

Address: A1208, Overseas Decoration Building, #122 Zhenhua RD., Futian, Shenzhen, China



5

4

3

2

1



Description: 95 series solder panel & cable mount high density D-Sub connectors

Part No: 40-9515HDM

Application: 95 Series D-Sub Connector

Crimp Tool: N/A

Impedance: N/A

Frequency Range: N/A

Material: Shell Steel, Tin plated
Insulator PBT+30% Fiber-grass
UL94-V0 White
Contact Copper-alloy, Gold-flashed plated

RoHS Compliance: Yes

Technical Detail: N/A

DRAWING NO.
40-9515HDM-CUST(SEE TABLE I)

REVISIONS

OFFICIAL RELEASE					
01	03-09-11	J	J	D	

D

D

C

C

B

B

A

A

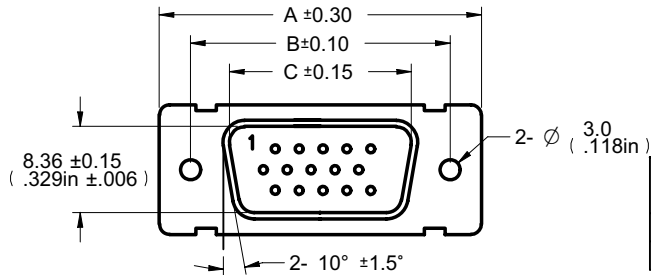
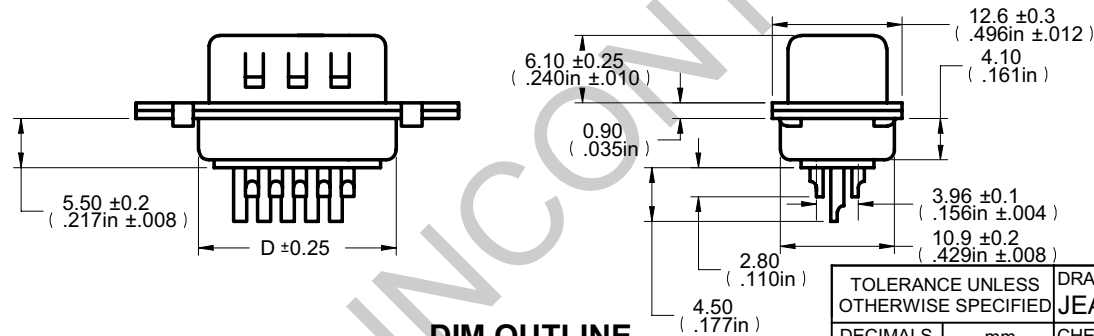


TABLE I

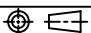
Part Number	Description	A (mm)	B (mm)	C (mm)	D (mm)
40-9515HDM	MALE- PLUG, SOLDER TYPE	30.80	24.99	16.92	19.20
40-9526HDM	MALE- PLUG, SOLDER TYPE	39.20	33.32	25.25	27.70



DIM OUTLINE

受控 CONTROLLED DOCUMENT

编号 P/N	40-9515HDM-CUST (SEE TABLE 1)	版本 Rev	01	日期 Rel'd Date	Jul11,11
--------	----------------------------------	--------	----	---------------	----------

TOLERANCE UNLESS OTHERWISE SPECIFIED		DRAWN BY	DATE
DECIMALS	mm	JEAN.JIN	03-09-11
X	± 0.5	CHECKED BY	DATE
X.X	± 0.3	JEAN.JIN	03-09-11
X.XX	±0.15	APPROVED BY	DATE
ANGLES	± 0.5°	DONALD	03-09-11
	U/M	mm	

THIS DRAWING WAS PRODUCED BY COMPUTER,
DO NOT SCALE DRAWING OR UPDATE MANUALLY.

CUSTOMER COPY



TITLE
95 SERIES SOLDER PANEL & CABLE MOUNT
HIGH DENSITY D-SUB CONNECTORS

SHEET
1 OF 1

DRAWING NO.
40-9515HDM-CUST
(SEE TABLE I)

SIZE
A

5

4

3

2

1

SOLID EDGE RESELLER CO.