



Chipsmall Limited consists of a professional team with an average of over 10 year of expertise in the distribution of electronic components. Based in Hongkong, we have already established firm and mutual-benefit business relationships with customers from,Europe,America and south Asia,supplying obsolete and hard-to-find components to meet their specific needs.

With the principle of "Quality Parts,Customers Priority,Honest Operation,and Considerate Service",our business mainly focus on the distribution of electronic components. Line cards we deal with include Microchip,ALPS,ROHM,Xilinx,Pulse,ON,Everlight and Freescale. Main products comprise IC,Modules,Potentiometer,IC Socket,Relay,Connector.Our parts cover such applications as commercial,industrial, and automotives areas.

We are looking forward to setting up business relationship with you and hope to provide you with the best service and solution. Let us make a better world for our industry!



Contact us

Tel: +86-755-8981 8866 Fax: +86-755-8427 6832

Email & Skype: info@chipsmall.com Web: www.chipsmall.com

Address: A1208, Overseas Decoration Building, #122 Zhenhua RD., Futian, Shenzhen, China

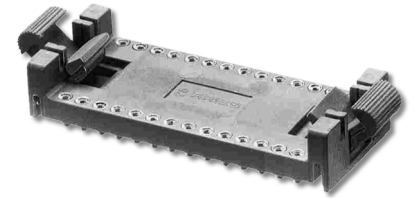




EJECT-A-DIP™ Lock/Eject DIP Socket w/Collet Contacts & Surface Mount Pins

FEATURES

- Rugged, Solderable Socket with a Unique Ejector/Latch for Fast In-field Board Maintenance
- Latch Locks-in Connector or Device for High-vibration Environments
- Ejector/Latch removes DIP Packages without Damage
- High-temperature 4/6 Nylon Suitable for Any Surface Mount Soldering Application



GENERAL SPECIFICATIONS

- LATCH & BODY: Black UL 94V-0 Glass-filled 4/6 Nylon
- PIN BODY: Brass 360 1/2-hard per UNS C36000 ASTM-B16-00
- PIN BODY PLATING: 10μ [0.25μ] min. Au per MIL-G-45204 –OR– 200μ [5.08μ] min. 93/7 Sn/Pb per ASTM B545 –OR– 200μ [5.08μ] min. Sn per ASTM B545 Type 1 over 100μ [2.54μ] min. Ni per SAE AMS-QQ-N-290B
- 6-FINGER COLLET CONTACT: BeCu per UNS C17200 ASTM-B194-01
- CONTACT PLATING: 10μ [0.25μ] min. Au per MIL-G-45204 over 50μ [1.27μ] min. Ni per SAE AMS-QQ-N-290B. Heavy 30μ [0.76μ] Au plating on contacts also available.
- CONTACT CURRENT RATING: 3 amps
- INSULATION RESISTANCE: 10,000 MΩ @ 500 VDC
- WITHSTANDING VOLTAGE: 1000 V RMS
- OPERATING TEMPERATURE: -67°F to 221°F [-55°C to 105°C] for Sn plating, -67°F to 257°F [-55°C to 125°C] for Au plating
- INSERTION FORCE: 67g/pin, based on 0.018 [0.46] dia. test lead
- WITHDRAWAL FORCE: 30g/pin, based on 0.018 [0.46] dia. test lead
- NORMAL FORCE: 45g/pin, based on 0.018 [0.46] dia. test lead long

ORDERING INFORMATION

XX-CXXX-X XXX XX

Optional Plating

H = Heavy Au Collet

Plating

0 = Au Collet, Sn Shell

OTL = Au Collet, Sn/Pb Shell

1 = Au Collet & Shell

Termination

0 = Surface Mount Pins

Dim. "H"

(See Table)

No. of Pins

(See Table)

MOUNTING CONSIDERATIONS

- SUGGESTED PCB PAD SIZE: 0.063 [1.60] dia.

ALL DIMENSIONS: INCHES [MILLIMETERS]

ALL TOLERANCES: ±0.005 [0.13] UNLESS OTHERWISE SPECIFIED

FOR COLLET SOCKET w/SOLDER PIN TAILS, SEE [DATA SHEET 12024](#)

FOR COLLET SOCKET w/WIRE WRAP PINS, SEE [DATA SHEET 12025](#)

CONSULT FACTORY FOR OTHER SIZES AND CONFIGURATIONS

CUSTOMIZATION: ARIES SPECIALIZES IN CUSTOM DESIGN AND PRODUCTION. SPECIAL MATERIALS, PLATINGS, SIZES, AND CONFIGURATIONS CAN BE FURNISHED, DEPENDING ON QUANTITY.

ARIES RESERVES THE RIGHT TO CHANGE PRODUCT GENERAL SPECIFICATIONS WITHOUT NOTICE

PRINTOUTS OF THIS DOCUMENT MAY BE OUT-OF-DATE AND SHOULD BE CONSIDERED UNCONTROLLED



ARIES
ELECTRONICS, INC.

2609 Bartram Road • Bristol, PA 19007-6810 USA

TEL 215-781-9956 • FAX 215-781-9845

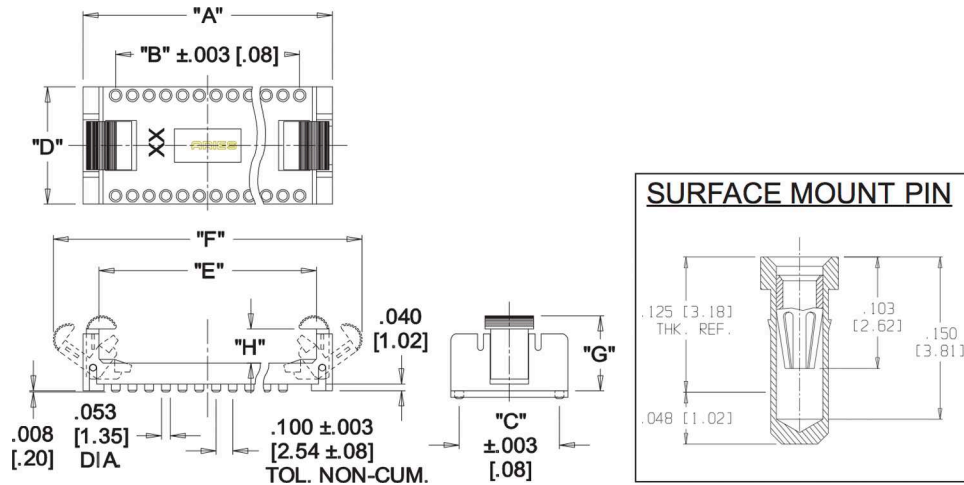
WWW.ARIESELEC.COM • INFO@ARIESELEC.COM



12023
Rev. 5.2
1 of 2



EJECT-A-DIP™ Lock/Eject DIP Socket w/Collet Contacts & Surface Mount Pins



No. of Pins	Catalog No.	Dim. "A"	Dim. "B"	Centers "C"	Dim. "D"	Dim. "E"	Dim. "F"	Dim "G"	Dim "H"
14	14-C280-XX	0.950 [24.10]	0.600 [15.24]	0.300 [7.62]	0.400 [10.16]	0.770 [19.56]	1.300 [33.02]	0.490 [12.45]	0.280 [7.11]
14	14-C195-XX	0.950 [24.10]	0.600 [15.24]	0.300 [7.62]	0.400 [10.16]	0.770 [19.56]	1.300 [33.02]	0.450 [11.43]	0.195 [4.95]
16	16-C280-XX	1.050 [26.70]	0.700 [17.78]	0.300 [7.62]	0.400 [10.16]	0.870 [22.10]	1.540 [39.12]	0.490 [12.45]	0.280 [7.11]
16	16-C195-XX	1.050 [26.70]	0.700 [17.78]	0.300 [7.62]	0.400 [10.16]	0.870 [22.10]	1.390 [35.31]	0.450 [11.43]	0.195 [4.95]
24	24-C300-XX	1.490 [37.85]	1.100 [27.94]	0.600 [15.24]	0.700 [17.78]	1.300 [33.02]	1.970 [50.04]	0.570 [14.48]	0.300 [7.62]
24	24-C212-XX	1.490 [37.85]	1.100 [27.94]	0.600 [15.24]	0.700 [17.78]	1.300 [33.02]	1.850 [47.00]	0.490 [12.45]	0.212 [5.39]
24	24-C182-XX	1.490 [37.85]	1.100 [27.94]	0.600 [15.24]	0.700 [17.78]	1.300 [33.02]	1.800 [45.72]	0.460 [11.68]	0.182 [4.62]
28	28-C300-XX	1.690 [42.90]	1.300 [33.02]	0.600 [15.24]	0.700 [17.78]	1.500 [38.10]	2.170 [55.12]	0.570 [14.48]	0.300 [7.62]
28	28-C212-XX	1.690 [42.90]	1.300 [33.02]	0.600 [15.24]	0.700 [17.78]	1.500 [38.10]	2.050 [52.07]	0.490 [12.45]	0.212 [5.39]
28	28-C182-XX	1.690 [42.90]	1.300 [33.02]	0.600 [15.24]	0.700 [17.78]	1.500 [38.10]	2.000 [50.80]	0.460 [11.68]	0.182 [4.62]
32	32-C300-XX	1.890 [48.00]	1.500 [38.10]	0.600 [15.24]	0.700 [17.78]	1.700 [43.18]	2.540 [64.52]	0.570 [14.48]	0.300 [7.62]
32	32-C212-XX	1.890 [48.00]	1.500 [38.10]	0.600 [15.24]	0.700 [17.78]	1.700 [43.18]	2.070 [52.58]	0.490 [12.45]	0.212 [5.39]
32	32-C182-XX	1.890 [48.00]	1.500 [38.10]	0.600 [15.24]	0.700 [17.78]	1.700 [43.18]	2.200 [55.88]	0.460 [11.68]	0.182 [4.62]
40	40-C300-XX	2.290 [58.20]	1.900 [48.26]	0.600 [15.24]	0.700 [17.78]	2.100 [53.34]	2.780 [70.61]	0.570 [14.48]	0.300 [7.62]
40	40-C212-XX	2.290 [58.20]	1.900 [48.26]	0.600 [15.24]	0.700 [17.78]	2.100 [53.34]	2.650 [67.31]	0.490 [12.45]	0.212 [5.39]
40	40-C182-XX	2.290 [58.20]	1.900 [48.26]	0.600 [15.24]	0.700 [17.78]	2.100 [53.34]	2.600 [66.04]	0.460 [11.68]	0.182 [4.62]

ALL DIMENSIONS: INCHES [MILLIMETERS]
 ALL TOLERANCES: ±0.005 [0.13] UNLESS OTHERWISE SPECIFIED
 FOR COLLET SOCKET w/SOLDER PIN TAILS, SEE DATA SHEET 12024
 FOR COLLET SOCKET w/WIRE WRAP PINS, SEE DATA SHEET 12025
 CONSULT FACTORY FOR OTHER SIZES AND CONFIGURATIONS

CUSTOMIZATION: ARIES SPECIALIZES IN CUSTOM DESIGN AND PRODUCTION.
 SPECIAL MATERIALS, PLATINGS, SIZES, AND CONFIGURATIONS CAN BE
 FURNISHED, DEPENDING ON QUANTITY.

ARIES RESERVES THE RIGHT TO CHANGE PRODUCT GENERAL SPECIFICATIONS
 WITHOUT NOTICE

PRINTOUTS OF THIS DOCUMENT MAY BE OUT-OF-DATE AND SHOULD BE
 CONSIDERED UNCONTROLLED



ARIES
ELECTRONICS, INC.

2609 Bartram Road • Bristol, PA 19007-6810 USA
 TEL 215-781-9956 • FAX 215-781-9845
 WWW.ARIESELEC.COM • INFO@ARIESELEC.COM



12023
Rev. 5.2
2 of 2