



Chipsmall Limited consists of a professional team with an average of over 10 year of expertise in the distribution of electronic components. Based in Hongkong, we have already established firm and mutual-benefit business relationships with customers from,Europe,America and south Asia,supplying obsolete and hard-to-find components to meet their specific needs.

With the principle of “Quality Parts,Customers Priority,Honest Operation,and Considerate Service”,our business mainly focus on the distribution of electronic components. Line cards we deal with include Microchip,ALPS,ROHM,Xilinx,Pulse,ON,Everlight and Freescale. Main products comprise IC,Modules,Potentiometer,IC Socket,Relay,Connector.Our parts cover such applications as commercial,industrial, and automotives areas.

We are looking forward to setting up business relationship with you and hope to provide you with the best service and solution. Let us make a better world for our industry!



Contact us

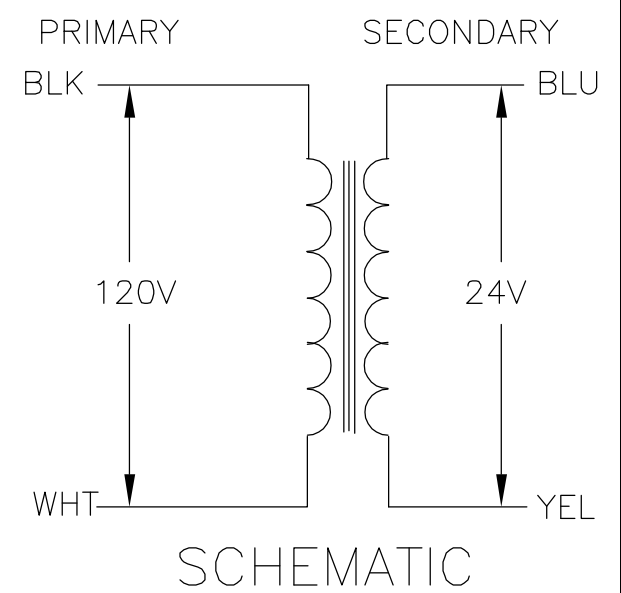
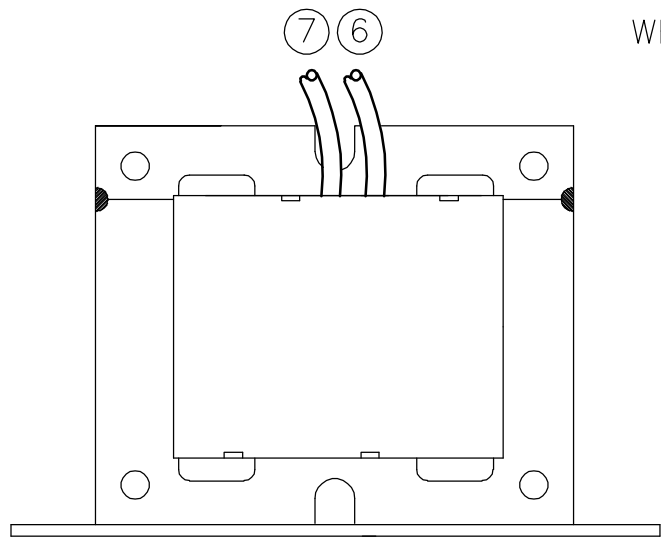
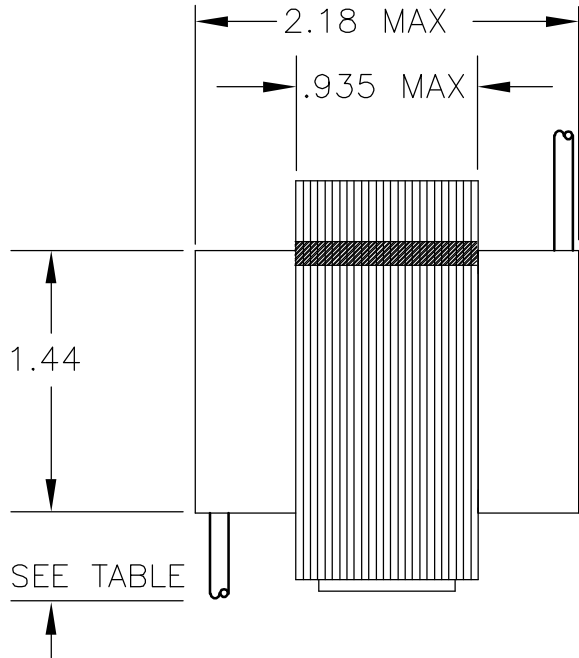
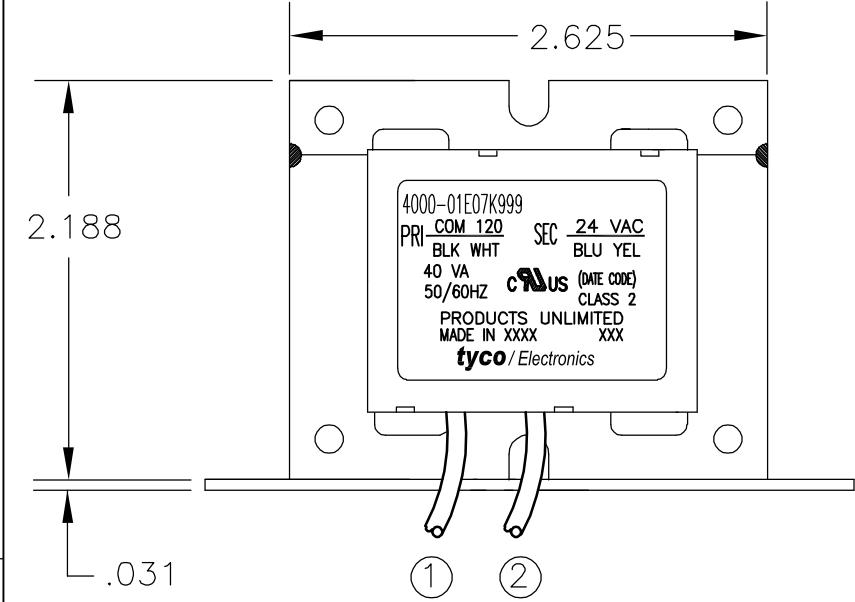
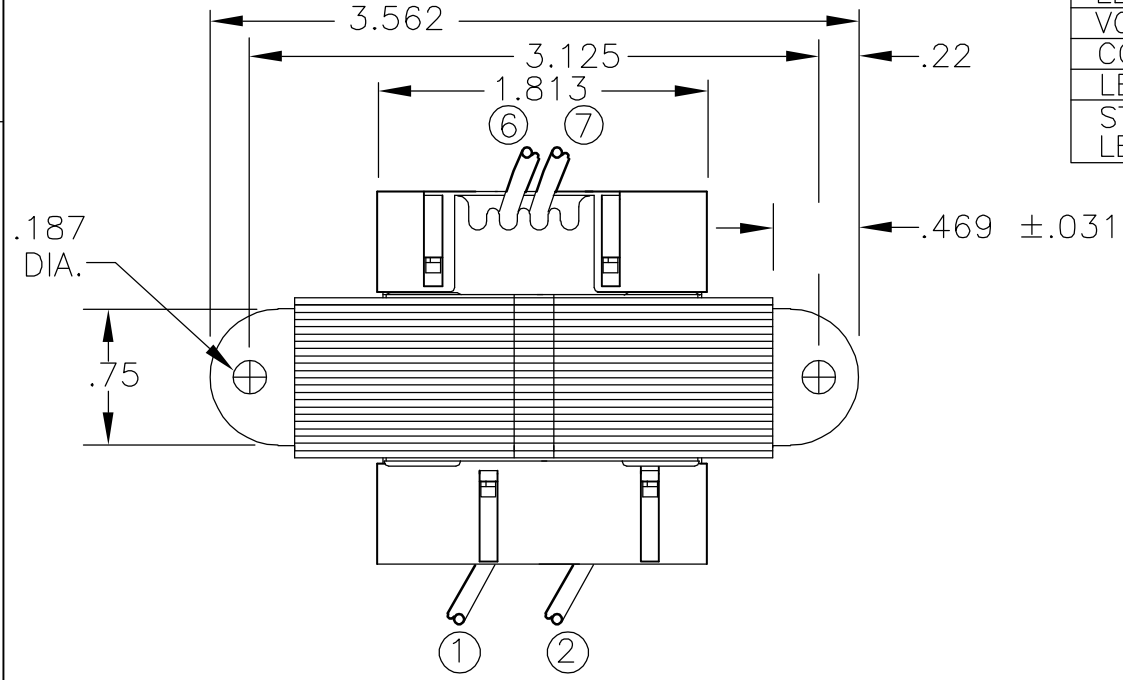
Tel: +86-755-8981 8866 Fax: +86-755-8427 6832

Email & Skype: info@chipsmall.com Web: www.chipsmall.com

Address: A1208, Overseas Decoration Building, #122 Zhenhua RD., Futian, Shenzhen, China



						NOTES		CERTIFICATION: UL,CUL FILE NO. E87824				
PRIMARY						1. DIMENSIONS FOR REFERENCE ONLY.		SECONDARY				
						2. WINDING PROTECTION-INHERENTLY LIMITING						
LEAD NO.	1	2	3	4	5			LEAD NO.	6	7	8	9
VOLTAGE	COM	120						VOLTAGE	24	VAC		
COLOR	BLK	WHT						COLOR	BLU	YEL		
LENGTH	12.0	12.0						LENGTH	12.0	12.0		
STRIP LENGTH	.50	.50						STRIP LENGTH	.50	.50		



TYCO PART NUMBER
4-1611453-7

THIS DRAWING IS A CONTROLLED DOCUMENT.		DWN	K.H.	22FEB1997	Tyco Electronics Corporation		
		CHK	-	-	Harrisburg, PA 17105-3608		
DIMENSIONS: INCHES		APVD	-	-	NAME		
		PRODUCT SPEC	-	-	TRANSFORMER OUTLINE		
		APPLICATION SPEC	-	-	P.U. STOCK		
MATERIAL		WEIGHT	-	-	SIZE	CAGE CODE	DRAWING NO
		FINISH	-	-	A3	00779	4000-01E07K999
					RESTRICTED TO		
					-		
		CUSTOMER DRAWING	SCALE		NTS	SHEET	1 OF 1
						REV	B