



Chipsmall Limited consists of a professional team with an average of over 10 year of expertise in the distribution of electronic components. Based in Hongkong, we have already established firm and mutual-benefit business relationships with customers from,Europe,America and south Asia,supplying obsolete and hard-to-find components to meet their specific needs.

With the principle of “Quality Parts,Customers Priority,Honest Operation,and Considerate Service”,our business mainly focus on the distribution of electronic components. Line cards we deal with include Microchip,ALPS,ROHM,Xilinx,Pulse,ON,Everlight and Freescale. Main products comprise IC,Modules,Potentiometer,IC Socket,Relay,Connector.Our parts cover such applications as commercial,industrial, and automotives areas.

We are looking forward to setting up business relationship with you and hope to provide you with the best service and solution. Let us make a better world for our industry!



Contact us

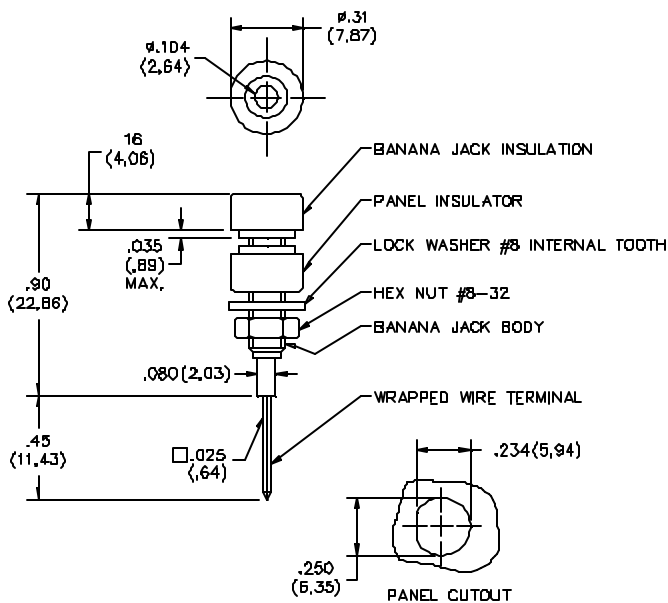
Tel: +86-755-8981 8866 Fax: +86-755-8427 6832

Email & Skype: info@chipsmall.com Web: www.chipsmall.com

Address: A1208, Overseas Decoration Building, #122 Zhenhua RD., Futian, Shenzhen, China



Model 4022 Insulated Banana Jack, Miniature With Wire Wrap Terminal



FEATURES:

- Accepts miniature banana plugs.
- Mounts in panels up to .250" thick.

MATERIALS:

Jack: Nickel Plated Brass

Terminal: Gold Plated Phosphor Bronze

Insulation: Polycarbonate molded to Banana Jack body

Panel Insulator: Polycarbonate. Color matches color of Banana Jack insulation.

Lockwasher #8 Internal Tooth: Steel. Nickel plated per QQ-N-290 Class 2, 200/300 microinches.

Wrapped Wire Terminal: Beryllium Copper. Gold plated per MIL-G-45204, Type II Class 00 over electroless nickel per MIL-C-26074, Class 1, 200/300 microinches.

RATINGS:

Operating Temperature: +115°C (+239°F) Max.

Operating Voltage: 1500 VDC

Current: 3 Amperes

ORDERING INFORMATION: Model 4022-*

Standard Colors: Available in 10 colors: -0 Black, -2 Red, -3 Orange, -4 Yellow, -5 Green, -6 Blue, -7 Violet, -8 Gray, -9 White

Sold in packages of 10 per color.

All dimensions are in inches. Tolerances (except noted): .xx = ±.02" (.51 mm), .xxx = ±.005" (.127 mm).

All specifications are to the latest revisions. Specifications are subject to change without notice.

Registered trademarks are the property of their respective companies.

Made in USA