



Chipsmall Limited consists of a professional team with an average of over 10 year of expertise in the distribution of electronic components. Based in Hongkong, we have already established firm and mutual-benefit business relationships with customers from,Europe,America and south Asia,supplying obsolete and hard-to-find components to meet their specific needs.

With the principle of “Quality Parts,Customers Priority,Honest Operation,and Considerate Service”,our business mainly focus on the distribution of electronic components. Line cards we deal with include Microchip,ALPS,ROHM,Xilinx,Pulse,ON,Everlight and Freescale. Main products comprise IC,Modules,Potentiometer,IC Socket,Relay,Connector.Our parts cover such applications as commercial,industrial, and automotives areas.

We are looking forward to setting up business relationship with you and hope to provide you with the best service and solution. Let us make a better world for our industry!



Contact us

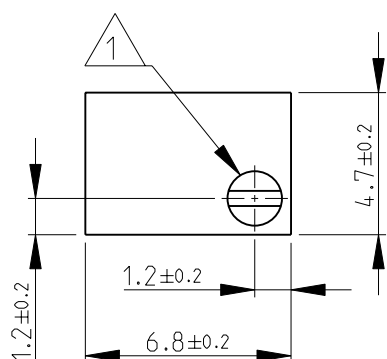
Tel: +86-755-8981 8866 Fax: +86-755-8427 6832

Email & Skype: info@chipsmall.com Web: www.chipsmall.com

Address: A1208, Overseas Decoration Building, #122 Zhenhua RD., Futian, Shenzhen, China

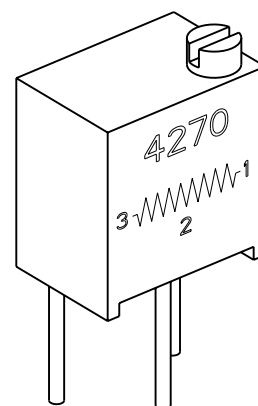
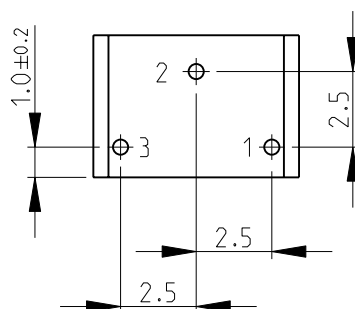
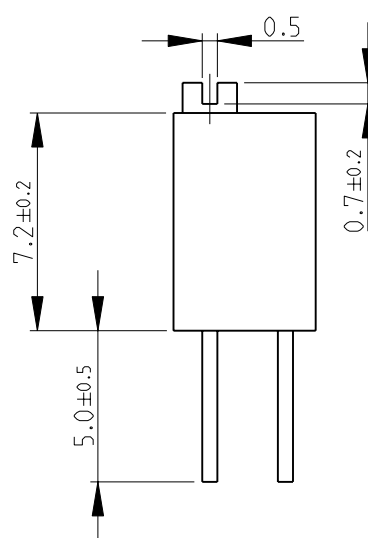
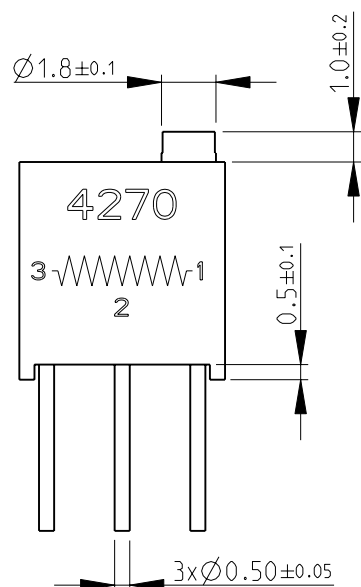


LOC	DIST	REVISIONS					
		P	LTR	DESCRIPTION	DATE	DWN	APVD
E	B		BA1	AS PER ECR-09-013551	15-JUN-09	SM	St.P


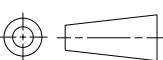


1 TOP ADJUSTMENT SCREW

2 FOR FURTHER INFORMATION SEE DATA SHEET FOR
4270 SERIES-PROFESSIONAL TRIMMERS



RoHS Compliant

DIMENSIONS:		DWN	17-NOV-08	MATERIAL		FINISH	
mm		SUBHASH.M	17-NOV-08	 Tyco Electronics Tyco Electronics Corporation Dorcan, Swindon, SN3 5HH			
TOLERANCES UNLESS OTHERWISE SPECIFIED:		CHK	17-NOV-08				
		APVD	17-NOV-08				
0 PLC ±0.2		PRODUCT SPEC		NAME			
1 PLC ±0.1		-					
2 PLC ±-		APPLICATION SPEC		SIZE CAGE CODE DRAWING NO RESTRICTED TO A 4 00779 C-1623862 -			
3 PLC ±-		-					
4 PLC ±-		WEIGHT 0.4g max.		SCALE 4:1 SHEET 1 OF 1 REV BA1			
ANGLES ±5°							
		CUSTOMER DRAWING					