



Chipsmall Limited consists of a professional team with an average of over 10 year of expertise in the distribution of electronic components. Based in Hongkong, we have already established firm and mutual-benefit business relationships with customers from,Europe,America and south Asia,supplying obsolete and hard-to-find components to meet their specific needs.

With the principle of “Quality Parts,Customers Priority,Honest Operation,and Considerate Service”,our business mainly focus on the distribution of electronic components. Line cards we deal with include Microchip,ALPS,ROHM,Xilinx,Pulse,ON,Everlight and Freescale. Main products comprise IC,Modules,Potentiometer,IC Socket,Relay,Connector.Our parts cover such applications as commercial,industrial, and automotives areas.

We are looking forward to setting up business relationship with you and hope to provide you with the best service and solution. Let us make a better world for our industry!



Contact us

Tel: +86-755-8981 8866 Fax: +86-755-8427 6832

Email & Skype: info@chipsmall.com Web: www.chipsmall.com

Address: A1208, Overseas Decoration Building, #122 Zhenhua RD., Futian, Shenzhen, China



Heavy Duty Light Meter with PC Interface

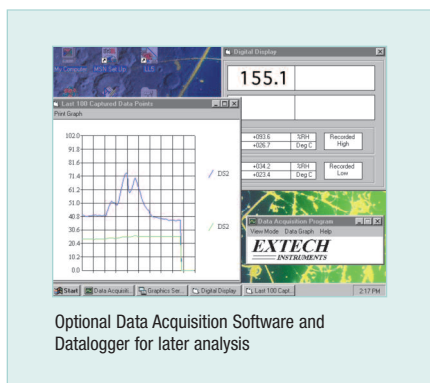
✓ Simultaneous display of Foot Candles or Lux
Plus four lighting types - now includes Sodium light measurements

Features:

- Microprocessor assures maximum accuracy plus special functions
- Fc Range: 200.0, 2000, 5000Fc
Lux Range: 2000, 20,000, 50,000Lux
- Basic accuracy of $\pm 4\%$ FS
- Large 1.4" (1999 count) LCD display
- % displays differential from reference point
- "ZERO" Re-Calibration
- Utilizes precision photo diode and color correction filter
- Cosine and color corrected measurements
- $\pm 4\%$ accuracy is enhanced by selecting lighting type (Tungsten/Daylight, Fluorescent, Sodium, Mercury)
- Record/Recall MIN, MAX and AVG readings
- Data Hold plus Auto shut off
- Built-in RS-232 serial interface, optional software
- Dimensions: 7 x 2.9 x 1.3" (178 x 74 x 33mm);
Weight: 1.6lbs. (726g)
- Complete with 9V battery, light sensor with 45" (1.1m) cable, protective cover, and holster with stand

Interface Options:

- Optional Windows[®] Data Acquisition Software and serial cable enable user to display and capture readings on a PC, and set time intervals and alarms
- Optional battery operated Datalogger module stores over 8000 readings for later transfer to a PC



Optional Data Acquisition Software and Datalogger for later analysis

Ordering Information:

- 407026Foot Candle/Lux Meter
- 407026-NIST407026 with NIST Certificate
- 156119117V AC Adaptor
- 156221220V AC Adaptor
- 409997Large Soft Vinyl Pouch Carrying Case
- 140001Hard Vinyl Case with Handle (for Heavy Duty Series)
- 407001Data Acquisition Software & Serial Cable
- 407001-USBUSB Adaptor for 407001
- 380340Battery Operated Datalogger Module

