



Chipsmall Limited consists of a professional team with an average of over 10 year of expertise in the distribution of electronic components. Based in Hongkong, we have already established firm and mutual-benefit business relationships with customers from,Europe,America and south Asia,supplying obsolete and hard-to-find components to meet their specific needs.

With the principle of “Quality Parts,Customers Priority,Honest Operation,and Considerate Service”,our business mainly focus on the distribution of electronic components. Line cards we deal with include Microchip,ALPS,ROHM,Xilinx,Pulse,ON,Everlight and Freescale. Main products comprise IC,Modules,Potentiometer,IC Socket,Relay,Connector.Our parts cover such applications as commercial,industrial, and automotives areas.

We are looking forward to setting up business relationship with you and hope to provide you with the best service and solution. Let us make a better world for our industry!



Contact us

Tel: +86-755-8981 8866 Fax: +86-755-8427 6832

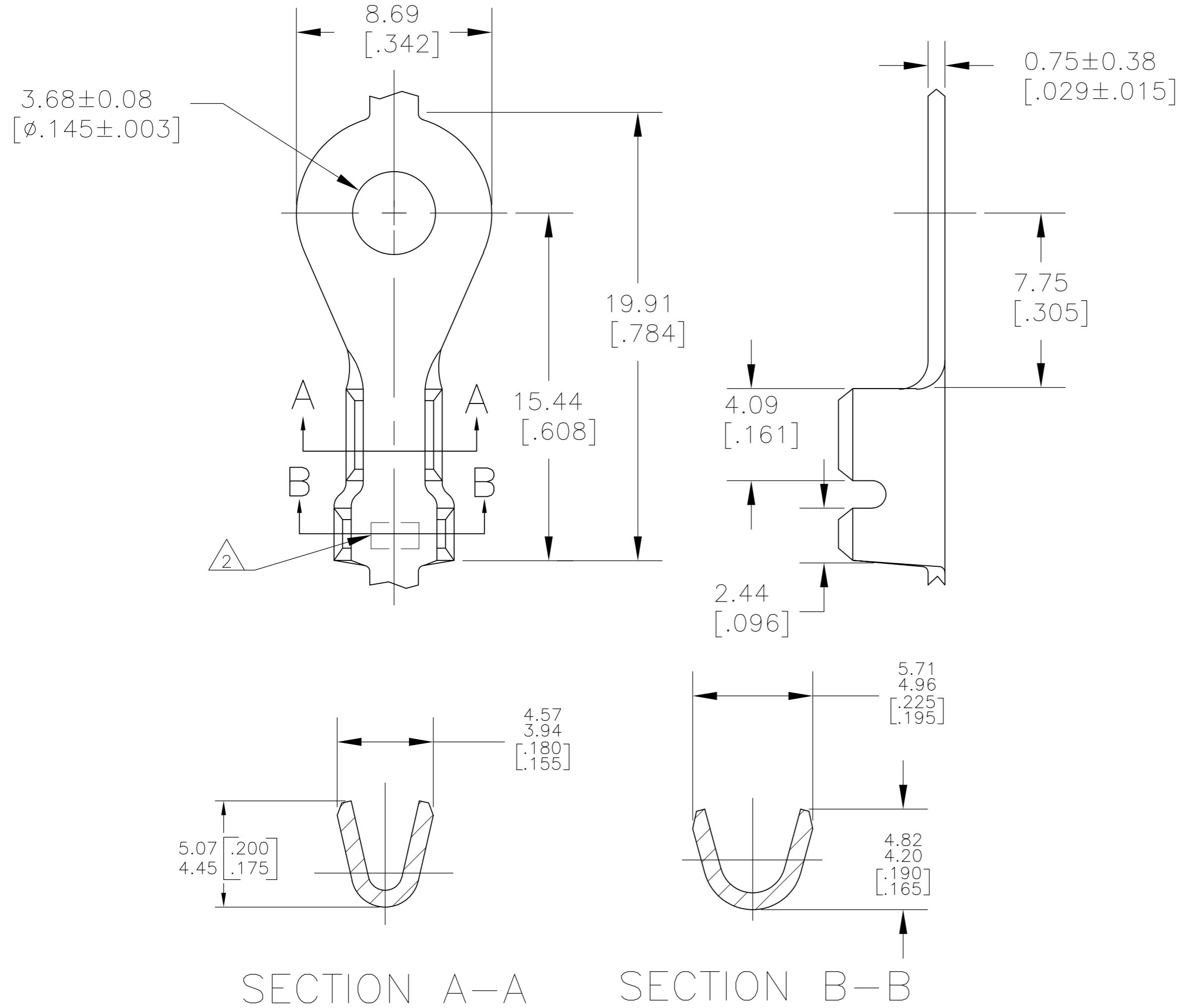
Email & Skype: info@chipsmall.com Web: www.chipsmall.com

Address: A1208, Overseas Decoration Building, #122 Zhenhua RD., Futian, Shenzhen, China



THIS DRAWING IS UNPUBLISHED. RELEASED FOR PUBLICATION
 © COPYRIGHT BY TYCO ELECTRONICS CORPORATION. ALL INTERNATIONAL RIGHTS RESERVED.

LOC	DIST	REVISIONS			
P	LTR	DESCRIPTION	DATE	DWN	APVD
AF	50	Z1	REVISED PER ECO 11-016480	12AUG11	JR PD



- 1. CONTINUOUS STRIP ON REELS.
- △ 2 AMP STAMP: AMP FOR 40723, AMP* FOR 40723-1.

H03 PHOSPHOR BRONZE	0.8-2.0mm ² [18-14] AWG	2.54-3.56 [.100-.140] DIA	40723-1
082 BRASS			40723
MATERIAL	WIRE RANGE	INSULATION RANGE	PART NUMBER

THIS DRAWING IS A CONTROLLED DOCUMENT.		DWN 12FEB2001 MICHAEL S. FEHER	Tyco Electronics Corporation Harrisburg, PA 17105-3608	
DIMENSIONS: mm (in) [INCHES]		CHK 04APR2001 DONALD DECKER	NAME M3.5 - #6 STUD, TERMINAL, TONGUE, RING	
TOLERANCES UNLESS OTHERWISE SPECIFIED: 0 PLC ± - 1 PLC ± - 2 PLC ± 0.25[.010] 3 PLC ± - 4 PLC ± - ANGLES ± 1°		APVD 04APR2001 DONALD DECKER	PRODUCT SPEC	RESTRICTED TO
MATERIAL SEE TABLE		FINISH TIN	APPLICATION SPEC	SIZE A2
		WEIGHT -	WEIGHT	CAGE CODE 00779
			CUSTOMER DRAWING	DRAWING NO C=40723
			SCALE 6:1	SHEET 1 of 1
				REV Z1