



Chipsmall Limited consists of a professional team with an average of over 10 year of expertise in the distribution of electronic components. Based in Hongkong, we have already established firm and mutual-benefit business relationships with customers from,Europe,America and south Asia,supplying obsolete and hard-to-find components to meet their specific needs.

With the principle of "Quality Parts,Customers Priority,Honest Operation,and Considerate Service",our business mainly focus on the distribution of electronic components. Line cards we deal with include Microchip,ALPS,ROHM,Xilinx,Pulse,ON,Everlight and Freescale. Main products comprise IC,Modules,Potentiometer,IC Socket,Relay,Connector.Our parts cover such applications as commercial,industrial, and automotives areas.

We are looking forward to setting up business relationship with you and hope to provide you with the best service and solution. Let us make a better world for our industry!



Contact us

Tel: +86-755-8981 8866 Fax: +86-755-8427 6832

Email & Skype: info@chipsmall.com Web: www.chipsmall.com

Address: A1208, Overseas Decoration Building, #122 Zhenhua RD., Futian, Shenzhen, China



D

C

B

A

D

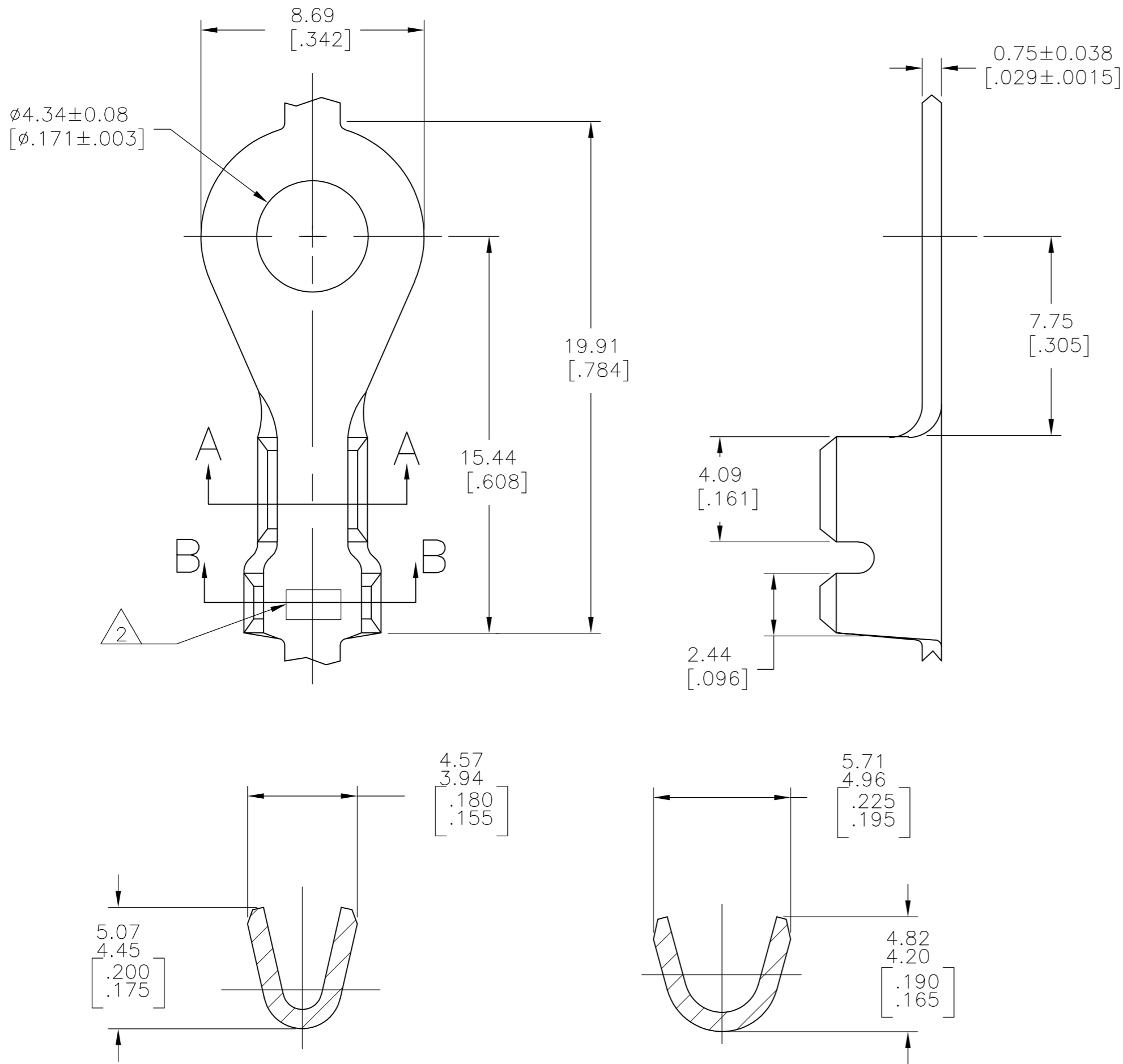
C

B

A



THIS DRAWING IS UNPUBLISHED.	RELEASED FOR PUBLICATION
© COPYRIGHT - By -	ALL RIGHTS RESERVED.

LOC	DIST	REVISIONS				
AF	50	P	LTR	DESCRIPTION	DATE	DWN
			AC2	REVISED PER ECO-12-007334	18APR12	JR
						APVD
						PD



- 1
- CONTINUOUS STRIP ON REELS.
- 2
- AMP STAMP.
- 3
- TIN PLATING
- 4
- TIN PLATING OVER COPPER UNDERPLATE.
- 5
- REDUCED PACKAGE QUANTITY.
- 6
- PRELIMINARY – NOT FOR PRODUCTION.

5	3	0.8–2.0mm ² [18–14] AWG	2.54–3.56 [.100–.140] DIA	6 40724–2
	4			6 40724–1
	3			40724
FINISH		WIRE RANGE	INSULATION RANGE	PART NUMBER

THIS DRAWING IS A CONTROLLED DOCUMENT.		DWN 12FEB2001 MICHAEL S. FEHER		 TE Connectivity			
		CHK 04APR2001 DONALD DECKER					
DIMENSIONS: mm [INCHES]		TOLERANCES UNLESS OTHERWISE SPECIFIED:		NAME M4 - #8 STUD, TERMINAL, TONGUE, RING			
		APVD 04APR2001 DONALD DECKER					
		PRODUCT SPEC —					
		APPLICATION SPEC —					
MATERIAL 082 BRASS		FINISH SEE TABLE		SIZE A2	CAGE CODE 00779	DRAWING NO C=40724	RESTRICTED TO —
CUSTOMER DRAWING				SCALE 1:1	SHEET 1 of 1	REV AC2	