



Chipsmall Limited consists of a professional team with an average of over 10 year of expertise in the distribution of electronic components. Based in Hongkong, we have already established firm and mutual-benefit business relationships with customers from,Europe,America and south Asia,supplying obsolete and hard-to-find components to meet their specific needs.

With the principle of “Quality Parts,Customers Priority,Honest Operation,and Considerate Service”,our business mainly focus on the distribution of electronic components. Line cards we deal with include Microchip,ALPS,ROHM,Xilinx,Pulse,ON,Everlight and Freescale. Main products comprise IC,Modules,Potentiometer,IC Socket,Relay,Connector.Our parts cover such applications as commercial,industrial, and automotives areas.

We are looking forward to setting up business relationship with you and hope to provide you with the best service and solution. Let us make a better world for our industry!



Contact us

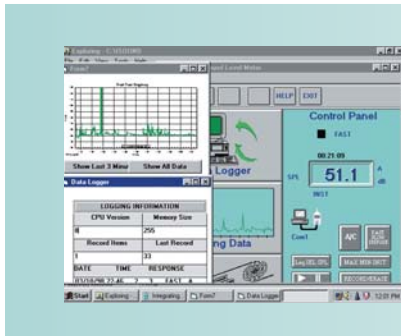
Tel: +86-755-8981 8866 Fax: +86-755-8427 6832

Email & Skype: info@chipsmall.com Web: www.chipsmall.com

Address: A1208, Overseas Decoration Building, #122 Zhenhua RD., Futian, Shenzhen, China



407780A Integrating Sound Level Meter



Leq and SEL measurements with built-in datalogger and PC interface. Datalogs up to 32,000 readings using included software and USB cable.

Applications:

- Perform Leq and SEL measurements
- OSHA compliance Testing
- Noise Ordinance
- Machine Noise Evaluation
- Data Storage for pertinent records



Features

- 4-digit multifunction LCD with analog bargraph
- Precise linearity over wide range (100dB)
- Display modes: SPL, SPL MIN/MAX, SEL, and Leq
- Programmable integrating time
- A and C Frequency weighting
- Impulse/Fast/Slow response settings
- Datalogging function records up to 32,000 records
- Real time calendar/clock
- Analog and alarm output features can be used to connect with Frequency analyzers, chart recorders, external dataloggers, and sound level alarms
- Built-in USB interface with included Windows[®] datalogging software
- Tripod mount
- Meets IEC 61672-1, 60651/60804 Type 2 and ANSI S1.4 Type 2 specifications
- Complete with windscreen, adjustment screwdriver, USB cable, Windows[®] compatible software, battery, and case

Ordering

407780A Integrating Sound Level Datalogger



Specifications

Applicable Standards	IEC 61672-1, 60651 and 60804 Type 2, ANSI S1.4 Type 2
Accuracy	±1.5dB (ref 94dB@1KHz)
Resolution	0.1dB
Digital Display	4 digital LCD
Measurement Parameters	SPL, SPL MIN/MAX, SEL, and Leq
Measurement Range	30dB to 130dB
Linearity Range	100dB
Measurement Frequency Range	31.5Hz to 8KHz
Frequency Weighting	A and C
Response	Impulse, Fast and Slow
Microphone	1/2 " Electret condenser microphone
Sampling time	updated every 0.5s
Bargraph	4dB steps, 100dB range, 125ms update
Display Warning Function	
Overrange Indicator	Displayed at the upper limit
Underrange Indicator	Displayed at the lower limit
Analog AC/DC Output	2Vrms (at full scale), 10mVDC/dB
Power Supply	Four 1.5V AA batteries, Optional AC adapter
Battery Life	Approximately 24 hours
Dimensions	10.4x2.8x0.8" (265x72x21mm)
Weight	10.9oz (310g)