



Chipsmall Limited consists of a professional team with an average of over 10 year of expertise in the distribution of electronic components. Based in Hongkong, we have already established firm and mutual-benefit business relationships with customers from,Europe,America and south Asia,supplying obsolete and hard-to-find components to meet their specific needs.

With the principle of "Quality Parts,Customers Priority,Honest Operation,and Considerate Service",our business mainly focus on the distribution of electronic components. Line cards we deal with include Microchip,ALPS,ROHM,Xilinx,Pulse,ON,Everlight and Freescale. Main products comprise IC,Modules,Potentiometer,IC Socket,Relay,Connector.Our parts cover such applications as commercial,industrial, and automotives areas.

We are looking forward to setting up business relationship with you and hope to provide you with the best service and solution. Let us make a better world for our industry!



Contact us

Tel: +86-755-8981 8866 Fax: +86-755-8427 6832

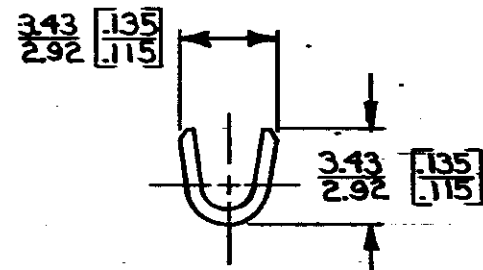
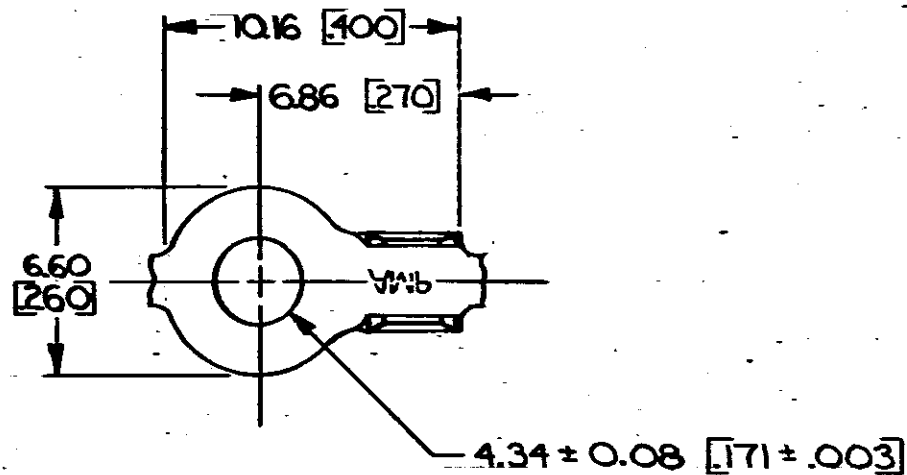
Email & Skype: info@chipsmall.com Web: www.chipsmall.com

Address: A1208, Overseas Decoration Building, #122 Zhenhua RD., Futian, Shenzhen, China

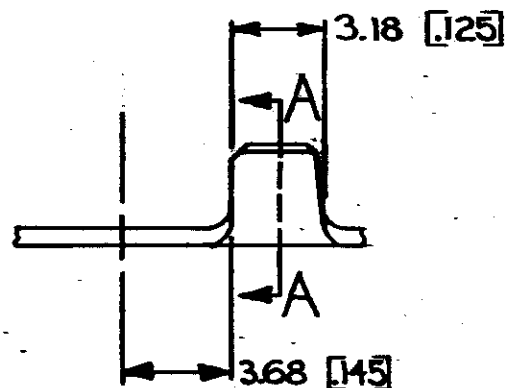


© COPYRIGHT 1969 BY AMP INCORPORATED, HARRISBURG, PA.
 ALL INTERNATIONAL RIGHTS RESERVED. AMP INCORPORATED PRODUCTS
 COVERED BY U. S. AND FOREIGN PATENTS AND/OR PATENTS PENDING.

		REVISIONS				
P	F	ZONE	LTR	DESCRIPTION	DATE	APPROVED
✓	✓		A	REDRAWN & REVISED A-3943	J.M. 4/26/78	
✓	✓		B	REVISED PER A-6127	9/19/83	SS/G4
✓	✓		C	REV PER AF-4968	Yanf 7/2/87	




SECT A-A



- 1. CONTINUOUS STRIP ON REELS
- 2. DIMENSIONS IN BRACKETS ARE IN INCHES.

METRIC

M4 #8	0.5-1.4 mm ² [20-16]	TIN	0.51 [020] BRASS	40812
STUD SIZE	WIRE RANGE	FINISH	MATERIAL	PART NO
UNLESS OTHERWISE SPECIFIED DIMENSIONS ARE IN mm TOLERANCES ON: DECIMALS ±0.38 [015] ANGLES ±1°		CONTRACT NO DR <i>S. Mogano</i> 4/26/78 CHK <i>Wagon & Kover</i> 7-25-78 APPD <i>R.P.F. Smith</i> 8-10-78 APPD <i>Lo. Flicks</i> 8-10-78 DSGN APPD OTHER APPD		 AMP INCORPORATED Harrisburg, Pa.
MATERIAL SEE TABLE		NAME RING		
FINISH SEE TABLE		SIZE B	CODE IDENT NO 00779	DRAWING NO 40812
		SCALE	SHEET	