



Chipsmall Limited consists of a professional team with an average of over 10 year of expertise in the distribution of electronic components. Based in Hongkong, we have already established firm and mutual-benefit business relationships with customers from,Europe,America and south Asia,supplying obsolete and hard-to-find components to meet their specific needs.

With the principle of "Quality Parts,Customers Priority,Honest Operation,and Considerate Service",our business mainly focus on the distribution of electronic components. Line cards we deal with include Microchip,ALPS,ROHM,Xilinx,Pulse,ON,Everlight and Freescale. Main products comprise IC,Modules,Potentiometer,IC Socket,Relay,Connector.Our parts cover such applications as commercial,industrial, and automotives areas.

We are looking forward to setting up business relationship with you and hope to provide you with the best service and solution. Let us make a better world for our industry!



Contact us

Tel: +86-755-8981 8866 Fax: +86-755-8427 6832

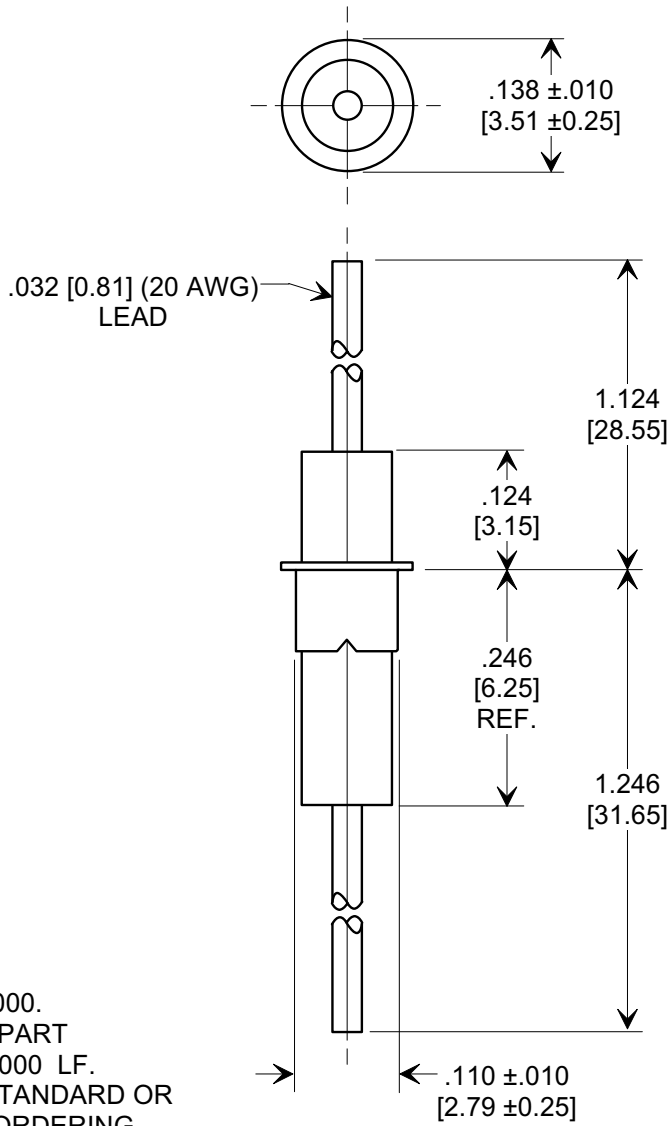
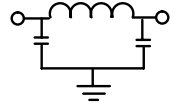
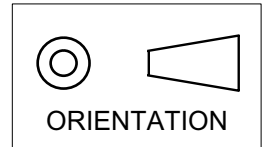
Email & Skype: info@chipsmall.com Web: www.chipsmall.com

Address: A1208, Overseas Decoration Building, #122 Zhenhua RD., Futian, Shenzhen, China



MARKETING SALES DRAWING
DIMENSIONS IN INCHES - DO NOT SCALE THIS DRAWING
DIMENSIONS IN METRIC - []

Electrical Testing
per Tusonix standard
test plans and Mil-Std-202
Test Methods.



NOTES:

1. TUSONIX STANDARD PART
NUMBER: 4100-000.
TUSONIX RoHS COMPLIANT PART
NUMBER: 4100-000 LF.
CUSTOMER MUST SPECIFY STANDARD OR
RoHS PART NUMBER WHEN ORDERING.
2. LEAD FINISH: STANDARD PART #: SILVER PLATED.
RoHS PART #: SILVER PLATED.
3. EYELET FINISH: STANDARD PART #: 60/40 SOLDER PLATED.
RoHS PART #: SILVER PLATED.
4. PART MARKING: STANDARD, NO MARKING.
RoHS PART: GREEN DOT ON INSULATION BAND,
TYPICAL LOCATION.

MIN. CAP. pF	WORKING VOLTAGE (WVDC)		CURRENT Idc.	I.R. MIN. @ 100 (VDC.)	DWV (VDC)	MINIMUM NO LOAD INSERTION LOSS (dB) AT 25°C PER MIL-STD-220			
	85°C	125°C				10 MHz	100 MHz	1 GHz	10 GHz
1500	250	125	10A	10 G	500	6	45	60	60

X-2015 Rev-0	REVISION RECORD						--TOLERANCES-- Unless Otherwise Specified	Title EYELET STYLE EMI FILTER	
	0	1	2	3	4	5			
	Original Release C.O.	WAS SK 6644-060-S. L.E. 01-13-84	DIMS & TOLS REV B. RELEASED. L.E. 01-08-85	CURRENT UNIT "A" ADDED L.E. 08-20-85	RDN TO COMP FMT. & METRIC ADDED. S.M. 05-17-00	ADDED I.R. & DWV. S.M. 10-11-04	ADDED NOTES. S.M. 06-06-5	ADDED NOTES. S.M. 06-06-5	ADDED NOTES. S.M. 06-06-5
	1653	2595	20000517-4-01	20041011-3-01	20050526-4-05	Approved S.M. 05-17-00		Scale 5 X	
	TUSONIX TUCSON, ARIZONA						Approved B.M. 05-17-00		A
							4100-000		