



Chipsmall Limited consists of a professional team with an average of over 10 year of expertise in the distribution of electronic components. Based in Hongkong, we have already established firm and mutual-benefit business relationships with customers from,Europe,America and south Asia,supplying obsolete and hard-to-find components to meet their specific needs.

With the principle of “Quality Parts,Customers Priority,Honest Operation,and Considerate Service”,our business mainly focus on the distribution of electronic components. Line cards we deal with include Microchip,ALPS,ROHM,Xilinx,Pulse,ON,Everlight and Freescale. Main products comprise IC,Modules,Potentiometer,IC Socket,Relay,Connector.Our parts cover such applications as commercial,industrial, and automotives areas.

We are looking forward to setting up business relationship with you and hope to provide you with the best service and solution. Let us make a better world for our industry!



## Contact us

Tel: +86-755-8981 8866 Fax: +86-755-8427 6832

Email & Skype: info@chipsmall.com Web: www.chipsmall.com

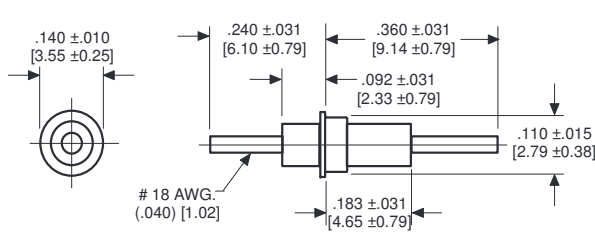
Address: A1208, Overseas Decoration Building, #122 Zhenhua RD., Futian, Shenzhen, China



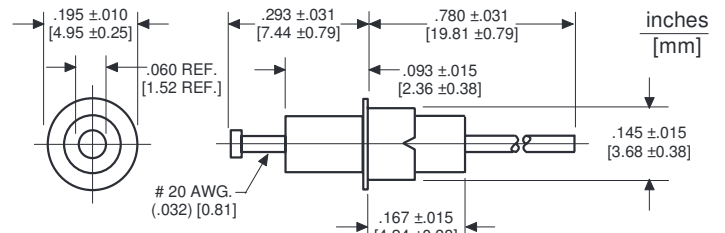
The products listed in this catalog are only a few of the thousands of variations that TUSONIX produces. For custom component design, please contact the factory direct.



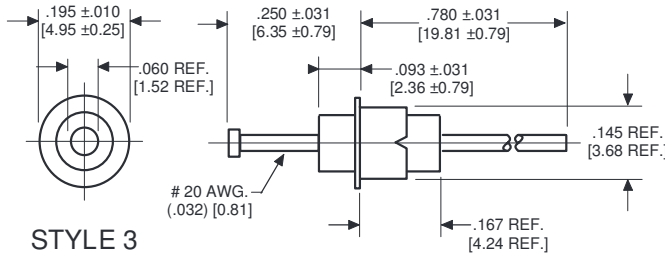
## Solder Mount Pi Filters



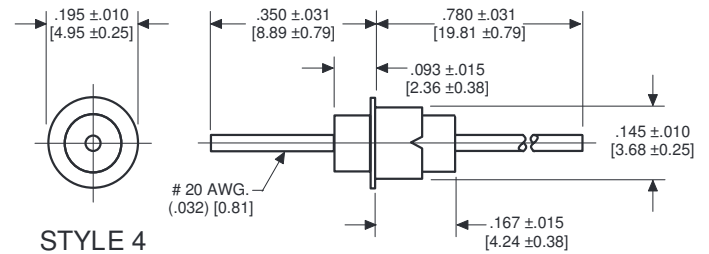
STYLE 1



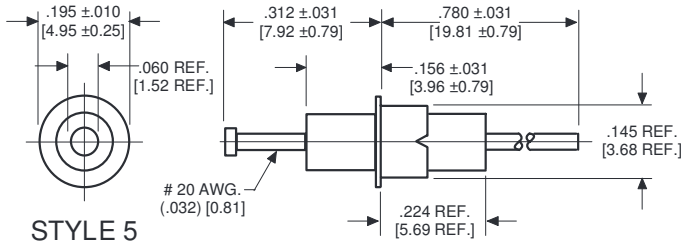
STYLE 2



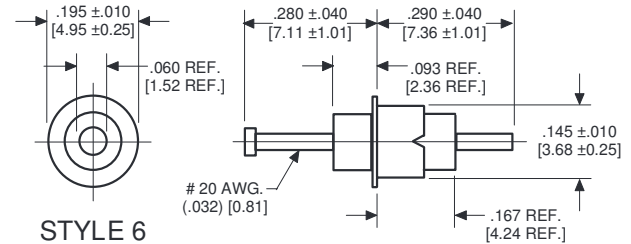
STYLE 3



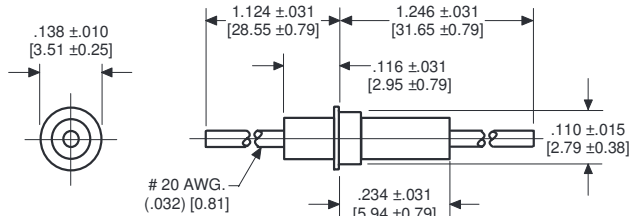
STYLE 4



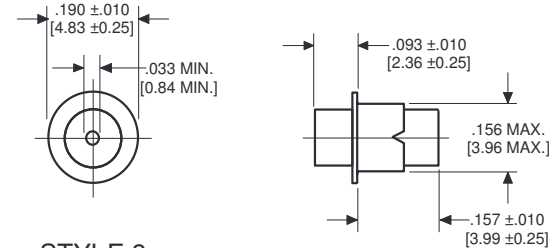
STYLE 5



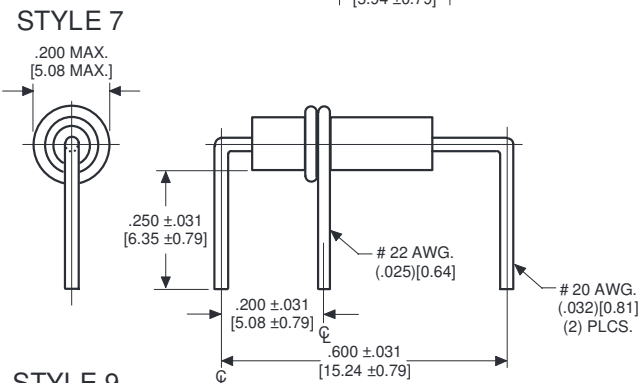
STYLE 6



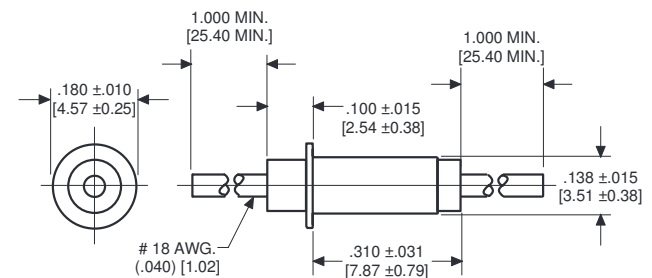
STYLE 7



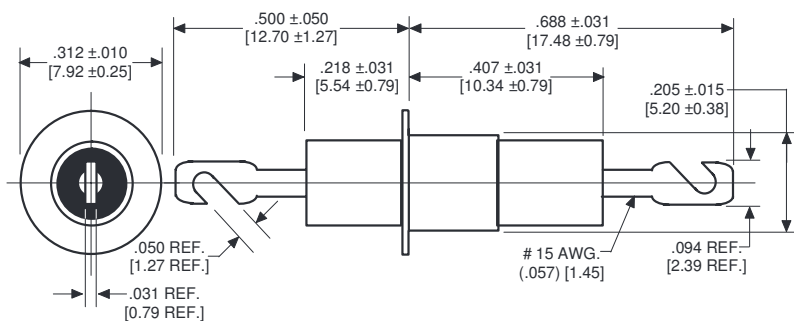
STYLE 8



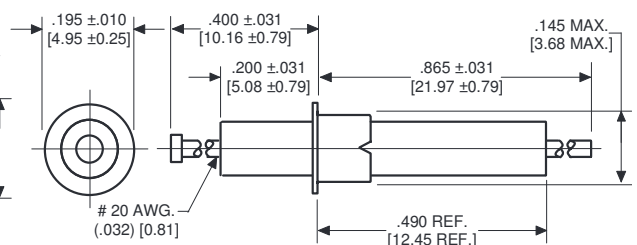
STYLE 9



STYLE 10



STYLE 11

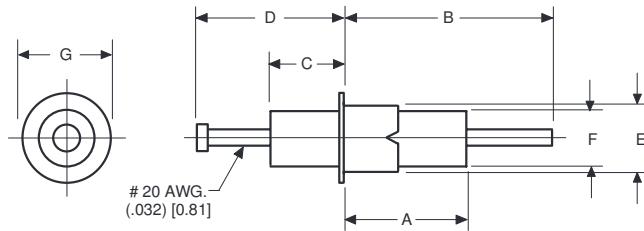


STYLE 12

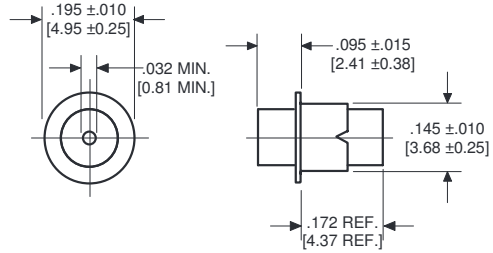
Drawings not to scale.



## Solder Mount Pi Filters



STYLE 13 THROUGH 19



STYLE 20

inches  
[mm]

DIMENSIONS FOR STYLES 13 THROUGH 19

| Style Number | MIL-PRF-15733         | DIM. A                       | DIM. B                         | DIM. C                       | DIM. D                         | DIM. E                       | DIM. F                       | DIM. G                       |
|--------------|-----------------------|------------------------------|--------------------------------|------------------------------|--------------------------------|------------------------------|------------------------------|------------------------------|
| 13           | /62-0003              | .272 ± .025<br>[6.91 ± 0.64] | .438 ± .062<br>[11.13 ± 1.57]  | .156 ± .015<br>[3.96 ± 0.38] | .312 ± .031<br>[7.92 ± 0.79]   | .145 ± .015<br>[3.68 ± 0.38] | ----                         | .190 ± .015<br>[4.83 ± 0.38] |
| 14           | /62-0004              | .151 ± .031<br>[3.84 ± 0.79] | .780 ± .031<br>[19.81 ± 0.79]  | .093 ± .031<br>[2.36 ± 0.79] | .273 ± .031<br>[6.93 ± 0.79]   | .145 ± .015<br>[3.68 ± 0.38] | ----                         | .196 ± .007<br>[4.98 ± 0.18] |
| 15           | /51-0002              | .226 ± .022<br>[5.74 ± 0.56] | .780 ± .031<br>[19.81 ± 0.79]  | .164 ± .022<br>[4.16 ± 0.56] | .312 ± .031<br>[7.92 ± 0.79]   | .145 ± .015<br>[3.68 ± 0.38] | ----                         | .203 ± .015<br>[5.16 ± 0.38] |
| 16           | /33-0001<br>/33-0002♦ | .170 ± .027<br>[4.32 ± 0.69] | .780 ± .031<br>[19.81 ± 0.79]  | .093 ± .015<br>[2.36 ± 0.38] | .288 ± .015<br>[7.32 ± 0.38]   | ----                         | .125 MAX<br>[3.18 MAX]       | .190 ± .015<br>[4.83 ± 0.38] |
| 17           | /62-0001              | .250 ± .031<br>[6.35 ± 0.79] | .406 ± .031<br>[10.31 ± 0.79]  | .156 ± .031<br>[3.96 ± 0.79] | .312 ± .031<br>[7.92 ± 0.79]   | .145 ± .015<br>[3.68 ± 0.38] | .125 ± .015<br>[3.18 ± 0.38] | .190 ± .015<br>[4.83 ± 0.38] |
| 18           | /62-0002♦             | .231 ± .046<br>[5.87 ± 1.17] | 1.231 ± .077<br>[31.27 ± 1.96] | .109 ± .031<br>[2.77 ± 0.79] | 1.109 ± .062<br>[28.17 ± 1.57] | .110 ± .015<br>[2.79 ± 0.38] | ----                         | .143 ± .010<br>[3.63 ± 0.25] |
| 19           | /51-0001              | .250 ± .031<br>[6.35 ± 0.79] | .406 ± .031<br>[10.31 ± 0.79]  | .156 ± .031<br>[3.96 ± 0.79] | .312 ± .031<br>[7.92 ± 0.79]   | .142 ± .007<br>[3.61 ± 0.18] | .122 ± .017<br>[3.10 ± 0.43] | .195 ± .010<br>[4.95 ± 0.25] |

**Notes:**

♦  Straight Lead

| TUSONIX Part Number     | MIL-PRF-15733 Number | Style | Notes | Circuit | Working Voltage (dc) |                | Capacitance (pF) | Capacitance Tolerance | Current (A) | Minimum No-Load Insertion Loss (dB) at 25°C per MIL-Std-220 |       |        |      |       |
|-------------------------|----------------------|-------|-------|---------|----------------------|----------------|------------------|-----------------------|-------------|---|-------|--------|------|-------|
|                         |                      |       |       |         | 85°C                 | 125°C          |                  |                       |             | 1MHz  | 10MHz | 100MHz | 1GHz | 10GHz |
| <b>Pi Configuration</b> |                      |       |       |         |                      |                |                  |                       |             |   |       |        |      |       |
| 4100-003                | --                   | 1     | --    | Pi      | 125                  | 50             | 3000             | GMV                   | 15          | --  | 7     | 50     | 65   | 60    |
| 4101-505                | /62-0003             | 13    | --    | Pi      | --                   | 70             | 1500             | GMV                   | 10          | --  | --    | 50     | 65   | 65    |
| 4151-000                | --                   | 3     | --    | Pi      | 100                  | 70             | 12,000           | GMV                   | 10          | --  | 25    | 70     | 65   | 65    |
| 4151-500                | /62-0004             | 14    | --    | Pi      | --                   | 70             | 12,000           | GMV                   | 10          | --  | 22    | 70     | --   | 65    |
| 4151-001                | --                   | 5     | --    | Pi      | 100                  | 70             | 22,000           | GMV                   | 10          | --  | 35    | 70     | 70   | 70    |
| 4151-501                | /51-0002             | 15    | --    | Pi      | --                   | 70             | 22,000           | GMV                   | 10          | --  | 25    | 70     | 70   | 70    |
| 4151-003                | --                   | 12    | --    | Pi      | 100                  | 70             | 60,000           | GMV                   | 10          | --  | 60    | 75     | 75   | 75    |
| 4100-000                | --                   | 7     | --    | Pi      | 250                  | 125            | 1500             | GMV                   | 10          | --  | 6     | 45     | 60   | 60    |
| 4101-000                | --                   | 20    | --    | Pi      | 250                  | 125            | 1750             | GMV                   | 10          | --  | 5     | 35     | 50   | 50    |
| 4101-002                | --                   | 2     | --    | Pi      | 250                  | 125            | 1750             | GMV                   | 10          | --  | 5     | 50     | 60   | 60    |
| 4101-003                | --                   | 4     | --    | Pi      | 250                  | 125            | 1750             | GMV                   | 10          | --  | 5     | 50     | 60   | 60    |
| 4101-004                | --                   | 6     | --    | Pi      | 250                  | 125            | 1750             | GMV                   | 10          | --  | 5     | 50     | 60   | 60    |
| 4101-502                | /33-0001             | 16    | --    | Pi      | --                   | 125dc<br>90ac  | 1750             | GMV                   | 10          | --  | --    | 50     | 60   | 60    |
| 4101-503                | /33-0002             | 16    | ♦     | Pi      | --                   | 125dc<br>90ac  | 1750             | GMV                   | 10          | --  | --    | 50     | 60   | 60    |
| 4101-500                | /66-0001             | 8     | --    | Pi      | --                   | 125            | 1750             | GMV                   | 10          | --  | 5     | 35     | 50   | 50    |
| 4100-056                | --                   | 9     | --    | Pi      | 250ac                | 200dc          | 1000             | ±20%                  | 10          | --  | 3     | 20     | 55   | --    |
| 4100-002                | --                   | 1     | --    | Pi      | 350                  | 200            | 1500             | GMV                   | 15          | --  | 5     | 25     | 60   | 60    |
| 4101-001                | --                   | 17    | --    | Pi      | 350                  | 200            | 1500             | GMV                   | 10          | --  | 3     | 45     | 70   | 70    |
| 4101-501                | /62-0001             | 17    | --    | Pi      | --                   | 200dc<br>140ac | 1500             | GMV                   | 10          | --  | 3     | 45     | 70   | 70    |
| 4100-500                | /62-0002             | 18    | ♦     | Pi      | --                   | 200            | 1500             | GMV                   | 10          | --  | 5     | 45     | 70   | --    |
| 4100-057                | --                   | 9     | --    | Pi      | 250ac                | 200dc          | 1500             | GMV                   | 10          | --  | 5     | 45     | 70   | --    |
| 4102-000                | --                   | 10    | --    | Pi      | 350                  | 200            | 3000             | GMV                   | 10          | --  | 8     | 55     | 65   | 65    |
| 4100-053                | --                   | 9     | --    | Pi      | 250ac                | 200dc          | 5000             | GMV                   | 10          | --  | 18    | 60     | 70   | --    |
| 4101-504                | /51-0001             | 19    | --    | Pi      | 200dc<br>200ac       | --             | 5500             | GMV                   | 10          | --  | 15    | 55     | 70   | 70    |
| 4106-000                | --                   | 11    | --    | Pi      | 500dc<br>350ac       | 500            | 3000             | GMV                   | 25          | --  | --    | 50     | 50   | 50    |
| 4106-001                | --                   | 11    | --    | Pi      | 1000                 | 500            | 4500             | GMV                   | 25          | --  | 8     | 50     | 70   | 70    |

Drawings not to scale.