



Chipsmall Limited consists of a professional team with an average of over 10 year of expertise in the distribution of electronic components. Based in Hongkong, we have already established firm and mutual-benefit business relationships with customers from,Europe,America and south Asia,supplying obsolete and hard-to-find components to meet their specific needs.

With the principle of “Quality Parts,Customers Priority,Honest Operation,and Considerate Service”,our business mainly focus on the distribution of electronic components. Line cards we deal with include Microchip,ALPS,ROHM,Xilinx,Pulse,ON,Everlight and Freescale. Main products comprise IC,Modules,Potentiometer,IC Socket,Relay,Connector.Our parts cover such applications as commercial,industrial, and automotives areas.

We are looking forward to setting up business relationship with you and hope to provide you with the best service and solution. Let us make a better world for our industry!



Contact us

Tel: +86-755-8981 8866 Fax: +86-755-8427 6832

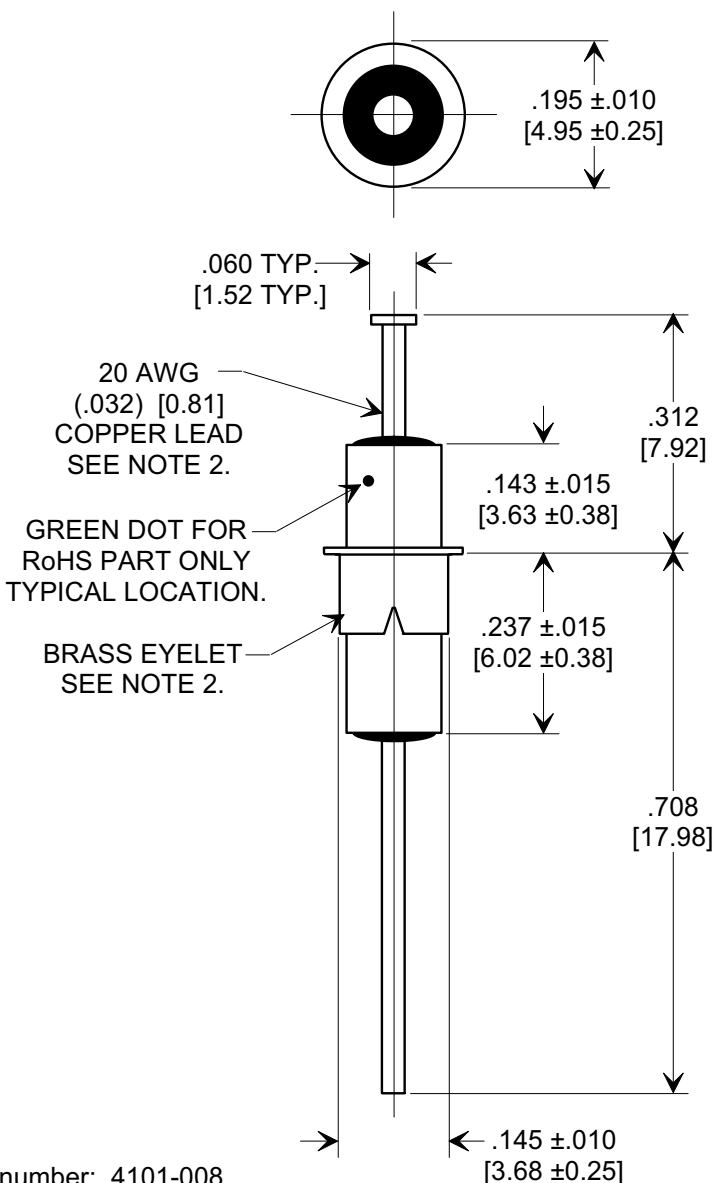
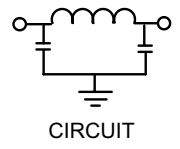
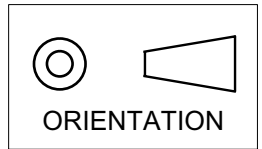
Email & Skype: info@chipsmall.com Web: www.chipsmall.com

Address: A1208, Overseas Decoration Building, #122 Zhenhua RD., Futian, Shenzhen, China



MARKETING SALES DRAWING
DIMENSIONS IN INCHES - DO NOT SCALE THIS DRAWING
DIMENSIONS IN METRIC - []

Electrical Testing
per Tusonix standard
test plans and Mil-Std-202
Test Methods.



Notes:

- Tusonix Standard part number: 4101-008.
Tusonix RoHS compliant part number: 4101-008 LF.
Customer must specify Standard or RoHS part number when ordering.
- Lead finish: Standard Part No.: 60/40 solder plated. RoHS Part No. Silver Plated.
Eyelet finish Standard Part No.: 60/40 solder plated. RoHS Part No. Silver Plated.
- Part Marking: Standard has no marking. RoHS part: Green Dot.

| MIN. CAP (pF) | WORKING VOLTAGE (WVDC) | | CURRENT I _{dc} | I.R. MIN. @ 100 (VDC.) | DWV 25 SEC. (VDC) | MINIMUM NO-LOAD INSERTION LOSS (dB) AT 25°C PER MIL-STD-220 | | | |
|---------------|------------------------|---------|-------------------------|------------------------|-------------------|---|---------|-------|--------|
| | 85°C | 125°C | | | | 10 MHz | 100 MHz | 1 GHz | 10 GHz |
| 5500 | 200 VDC | 100 VDC | 10A | 10 G Ω | 400 | 14 | 55 | 70 | 70 |

| | | | | | | | | | | |
|--------------|--|---|--|--|--|--|--|-------------------------|---------------|-------|
| X-2015 Rev-0 | REVISION RECORD | | | | | | --TOLERANCES-- Unless Otherwise Specified | Title | | |
| | 0 | Original Release | | | | | | EYELET STYLE EMI FILTER | | |
| | 1 | CHANGED TOL. +.005, -.010 WAS ±.010, 200 VDC WAS 140 & 70. E.C. 11-05-87 | | | | | | Drawn | S.M. 01-19-00 | Scale |
| | 2 | WAS SK6848-000-S ADDED .060 TYP DIM. E.C. 11-23-87 | | | | | Approved | | T.C. 01-19-00 | |
| | 3 | DWG. # WAS 4101-008-000-S. E.C. 01-21-88 | | | | | TUSONIX TUCSON, ARIZONA | A | 4101-008 | |
| | 4 | RDN TO COMP FMT. & ADDED METRIC. DIM. .143 WAS .156 & DIM. .237 WAS .250. DELETED S. WASHERS. S.M. 01-19-00 | | | | | | | | |
| 5 | 20000120-1-01 TOL. ±.010 WAS +.005 -.010. 100VDC WAS 200. ADDED TINNED COPPER.S.M. 07-14-03 | | | | | | | | | |
| 6 | 20030711-1-02 ADDED NOTES, IR & DWV. S.M. 09-14-05 | | | | | | | | | |
| | 20050829-1-06 | | | | | | | | | |