



Chipsmall Limited consists of a professional team with an average of over 10 year of expertise in the distribution of electronic components. Based in Hongkong, we have already established firm and mutual-benefit business relationships with customers from,Europe,America and south Asia,supplying obsolete and hard-to-find components to meet their specific needs.

With the principle of "Quality Parts,Customers Priority,Honest Operation,and Considerate Service",our business mainly focus on the distribution of electronic components. Line cards we deal with include Microchip,ALPS,ROHM,Xilinx,Pulse,ON,Everlight and Freescale. Main products comprise IC,Modules,Potentiometer,IC Socket,Relay,Connector.Our parts cover such applications as commercial,industrial, and automotives areas.

We are looking forward to setting up business relationship with you and hope to provide you with the best service and solution. Let us make a better world for our industry!



Contact us

Tel: +86-755-8981 8866 Fax: +86-755-8427 6832

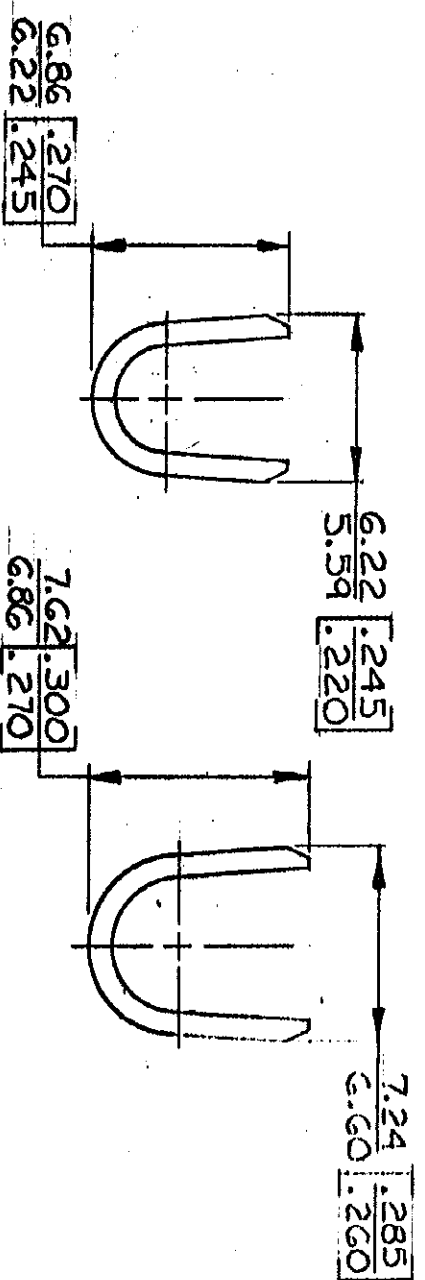
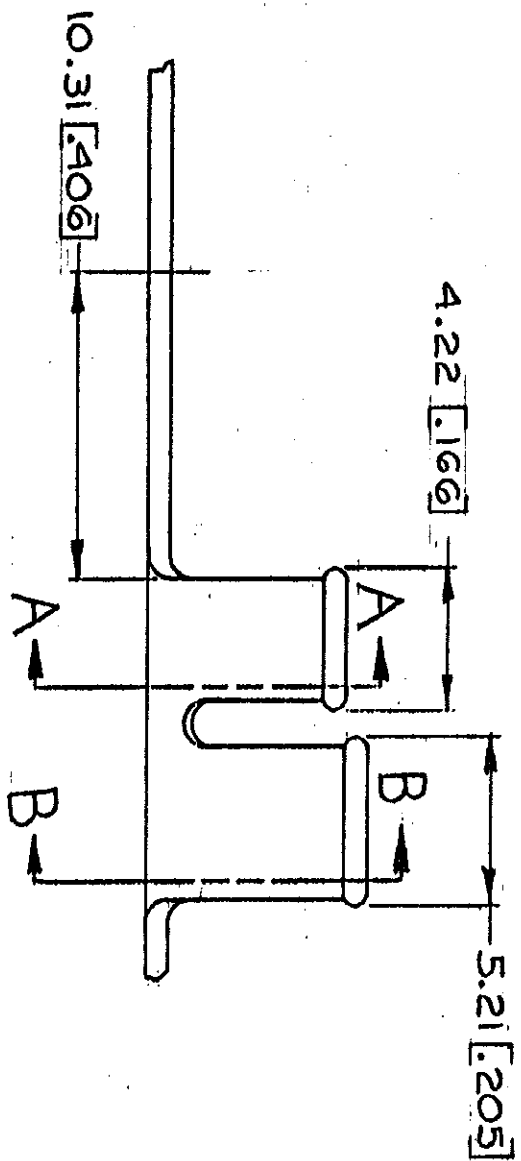
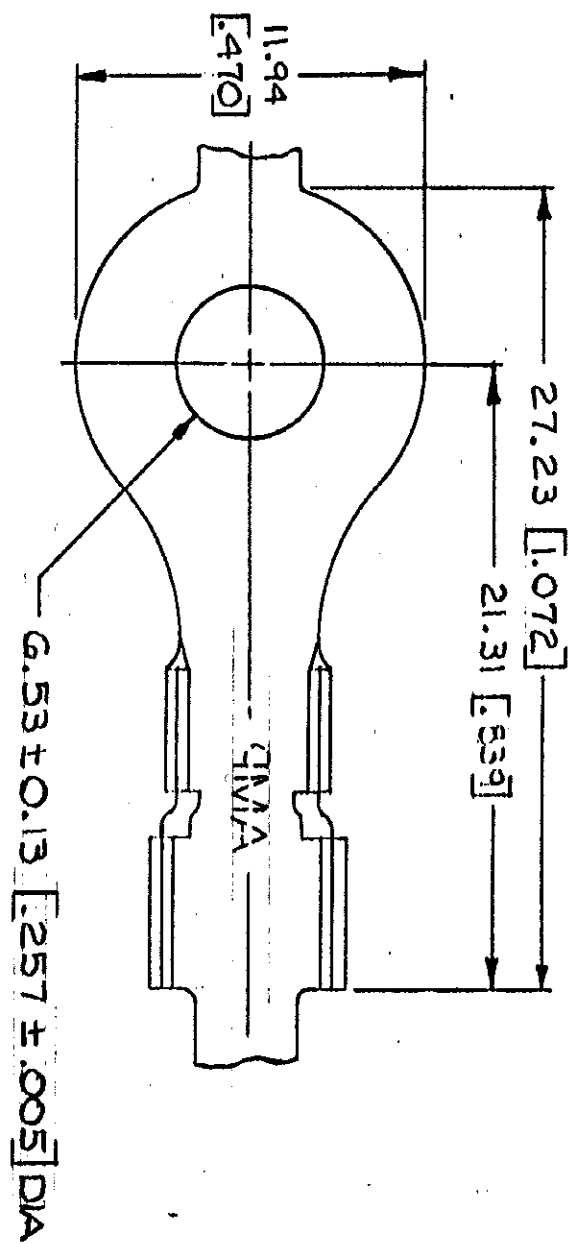
Email & Skype: info@chipsmall.com Web: www.chipsmall.com

Address: A1208, Overseas Decoration Building, #122 Zhenhua RD., Futian, Shenzhen, China



AWING MADE IN THIRD ANGLE PROJECTION

© COPYRIGHT 1963 BY AMP INCORPORATED, HARRISBURG, PA.
 ALL INTERNATIONAL RIGHTS RESERVED. AMP INCORPORATED PRODUCTS
 COVERED BY U. S. AND FOREIGN PATENTS AND/OR PATENTS PENDING.



| P/F | | ZONE | LTR | DESCRIPTION | DATE | APPROVED |
|-----|---|------|-------------------|-------------|----------|----------|
| ✓ | ✓ | A | REDRAWN & REVISED | A-3943 | 5-1-78 | D. SHI |
| ✓ | ✓ | B | REV PER AF-7197 | | 10/24/81 | PAW/ST |

- 1. CONTINUOUS STRIPON REELS
- 2. DIMENSIONS IN BRACKETS ARE IN INCHES.

METRIC

| | | | | | | | | | | | |
|-----------|-------------------|------------|----------------------|------------------|-----|--------------|----------|-------|--------|-------|---------|
| STUD SIZE | 3.0-6.0mm [12-10] | WIRE RANGE | 3.81-5.33 [150-.210] | INSULATION RANGE | TIN | 0.76 [0.030] | MATERIAL | BRASS | FINISH | 41125 | PART NO |
|-----------|-------------------|------------|----------------------|------------------|-----|--------------|----------|-------|--------|-------|---------|

UNLESS OTHERWISE SPECIFIED DIMENSIONS ARE IN INCHES. TOLERANCES ON: DECIMALS ±0.38 [0.15] ANGLES 1°

CONTRACT NO.

DR. *[Signature]* 5-1-78

CHK. *[Signature]* 7-8-78

AMP APPD. *[Signature]* 8-1-78

DSGN APPD. *[Signature]* 8-1-78

OTHER APPD.

NAME: **AMP** AMP INCORPORATED Harrisburg, Pa.

RING

| | | | |
|--------|---------------|------------|-------|
| FINISH | SEE TABLE | SCALE | B |
| SIZE | CODE IDENT NO | DRAWING NO | 41125 |
| 00779 | | SHEET | |

CUSTOMER DRAWING

AMP 1270-15 (7-73)