



Chipsmall Limited consists of a professional team with an average of over 10 year of expertise in the distribution of electronic components. Based in Hongkong, we have already established firm and mutual-benefit business relationships with customers from,Europe,America and south Asia,supplying obsolete and hard-to-find components to meet their specific needs.

With the principle of “Quality Parts,Customers Priority,Honest Operation,and Considerate Service”,our business mainly focus on the distribution of electronic components. Line cards we deal with include Microchip,ALPS,ROHM,Xilinx,Pulse,ON,Everlight and Freescale. Main products comprise IC,Modules,Potentiometer,IC Socket,Relay,Connector.Our parts cover such applications as commercial,industrial, and automotives areas.

We are looking forward to setting up business relationship with you and hope to provide you with the best service and solution. Let us make a better world for our industry!



Contact us

Tel: +86-755-8981 8866 Fax: +86-755-8427 6832

Email & Skype: info@chipsmall.com Web: www.chipsmall.com

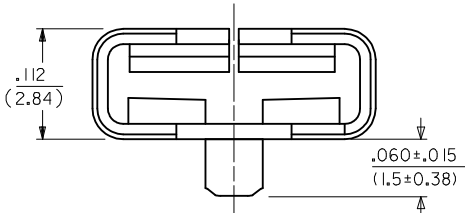
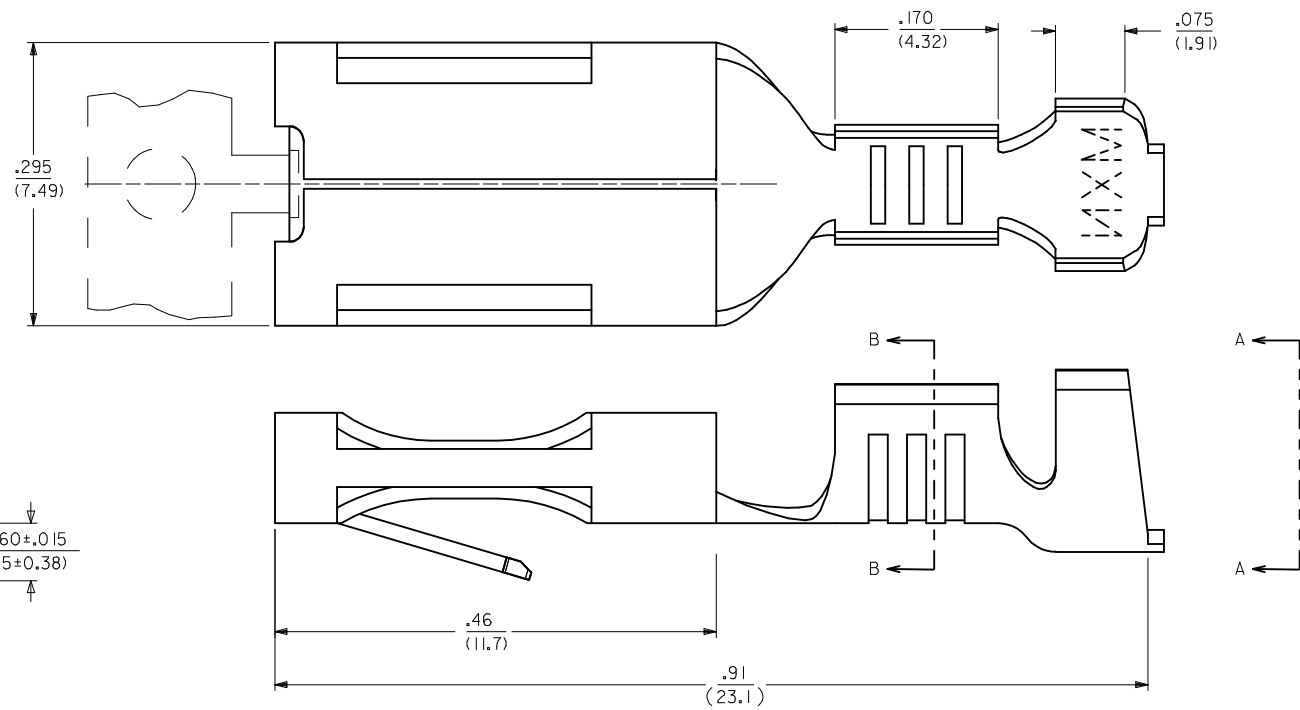
Address: A1208, Overseas Decoration Building, #122 Zhenhua RD., Futian, Shenzhen, China



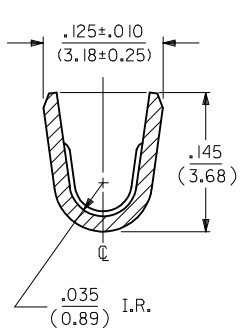
| | |
|------------|------------|
| ITEM NO. | ENG. NO. |
| 41422-5001 | 41422-5001 |

NOTES:

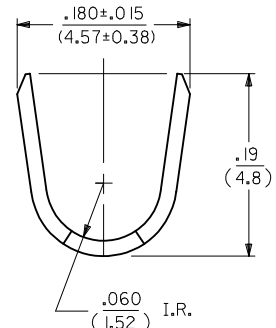
1. MATERIAL: BRASS, ALLOY *C26000, TEMPER SPRING, .016/(.04) THICK
2. FINISH: ES-88-P901, HOT TIN DIP .00002/(0.0005) MIN.
3. PRODUCT SPECIFICATION: NONE
4. IN ANY HOUSING DESIGN USING THIS TERMINAL, ESPECIALLY WHEN LOW INSERTION FORCES ARE EXPECTED, SOME SORT OF LOCKING DEVICE SHOULD BE CONSIDERED.
5. MATES TO .250/(6.35) X .032/(0.8) NOMINAL MALE TAB TERMINAL.
6. CRIMP TO #14 THROUGH #18 AWG. WIRE WITH .031/(0.79) THK. INSULATION.



CRIMP SECTION NOT SHOWN IN THIS VIEW FOR CLARITY.



SECTION B-B



VIEW A-A

| FIX BLOCK TOLERANCE EC NO: UCP2013-0551 DRW: AELHAG CHKD: JEBEL APPR: FSMITH | 2012/06/12 06/12/2012 2012/08/15 | QUALITY SYMBOLS ∇=0 ∇=0 ∇=0 | GENERAL TOLERANCES (UNLESS SPECIFIED) <table border="1"> <tr> <th></th> <th>mm</th> <th>INCH</th> </tr> <tr> <td>4 PLACES</td> <td>± .010</td> <td>± .0004</td> </tr> <tr> <td>3 PLACES</td> <td>± .012</td> <td>± .0005</td> </tr> <tr> <td>2 PLACES</td> <td>± .015</td> <td>± .0006</td> </tr> <tr> <td>1 PLACE</td> <td>± .020</td> <td>± .0008</td> </tr> </table> | | mm | INCH | 4 PLACES | ± .010 | ± .0004 | 3 PLACES | ± .012 | ± .0005 | 2 PLACES | ± .015 | ± .0006 | 1 PLACE | ± .020 | ± .0008 | DIMENSION STYLE IN/MM DRAWN BY: MAB DATE: 08/19/94 CHECKED BY: KBP DATE: 08/19/94 APPROVED BY: RAS DATE: 08/19/94 | SCALE: 10:1 DESIGN UNITS: INCH THIRD ANGLE PROJECTION | TITLE: TERMINAL, PUSH-ON CRIMP |
|---|--|--------------------------------------|--|---|----|------|----------|--------|---------|----------|--------|---------|----------|--------|---------|---------|--------|---------|---|---|---------------------------------------|
| | | mm | INCH | | | | | | | | | | | | | | | | | | |
| | 4 PLACES | ± .010 | ± .0004 | | | | | | | | | | | | | | | | | | |
| | 3 PLACES | ± .012 | ± .0005 | | | | | | | | | | | | | | | | | | |
| 2 PLACES | ± .015 | ± .0006 | | | | | | | | | | | | | | | | | | | |
| 1 PLACE | ± .020 | ± .0008 | | | | | | | | | | | | | | | | | | | |
| MATERIAL NO. SEE CHART DOCUMENT NO. SD-41422-5*** | SHEET NO. 1 OF 1 | | | | | | | | | | | | | | | | | | | | |
| DRAFT WHERE APPLICABLE MUST REMAIN WITHIN DIMENSIONS | | SIZE: C | | THIS DRAWING CONTAINS INFORMATION THAT IS PROPRIETARY TO MOLEX INCORPORATED AND SHOULD NOT BE USED WITHOUT WRITTEN PERMISSION | | | | | | | | | | | | | | | | | |
| C2 | REV | | | | | | | | | | | | | | | | | | | | |