



Chipsmall Limited consists of a professional team with an average of over 10 year of expertise in the distribution of electronic components. Based in Hongkong, we have already established firm and mutual-benefit business relationships with customers from,Europe,America and south Asia,supplying obsolete and hard-to-find components to meet their specific needs.

With the principle of “Quality Parts,Customers Priority,Honest Operation,and Considerate Service”,our business mainly focus on the distribution of electronic components. Line cards we deal with include Microchip,ALPS,ROHM,Xilinx,Pulse,ON,Everlight and Freescale. Main products comprise IC,Modules,Potentiometer,IC Socket,Relay,Connector.Our parts cover such applications as commercial,industrial, and automotives areas.

We are looking forward to setting up business relationship with you and hope to provide you with the best service and solution. Let us make a better world for our industry!



## Contact us

Tel: +86-755-8981 8866 Fax: +86-755-8427 6832

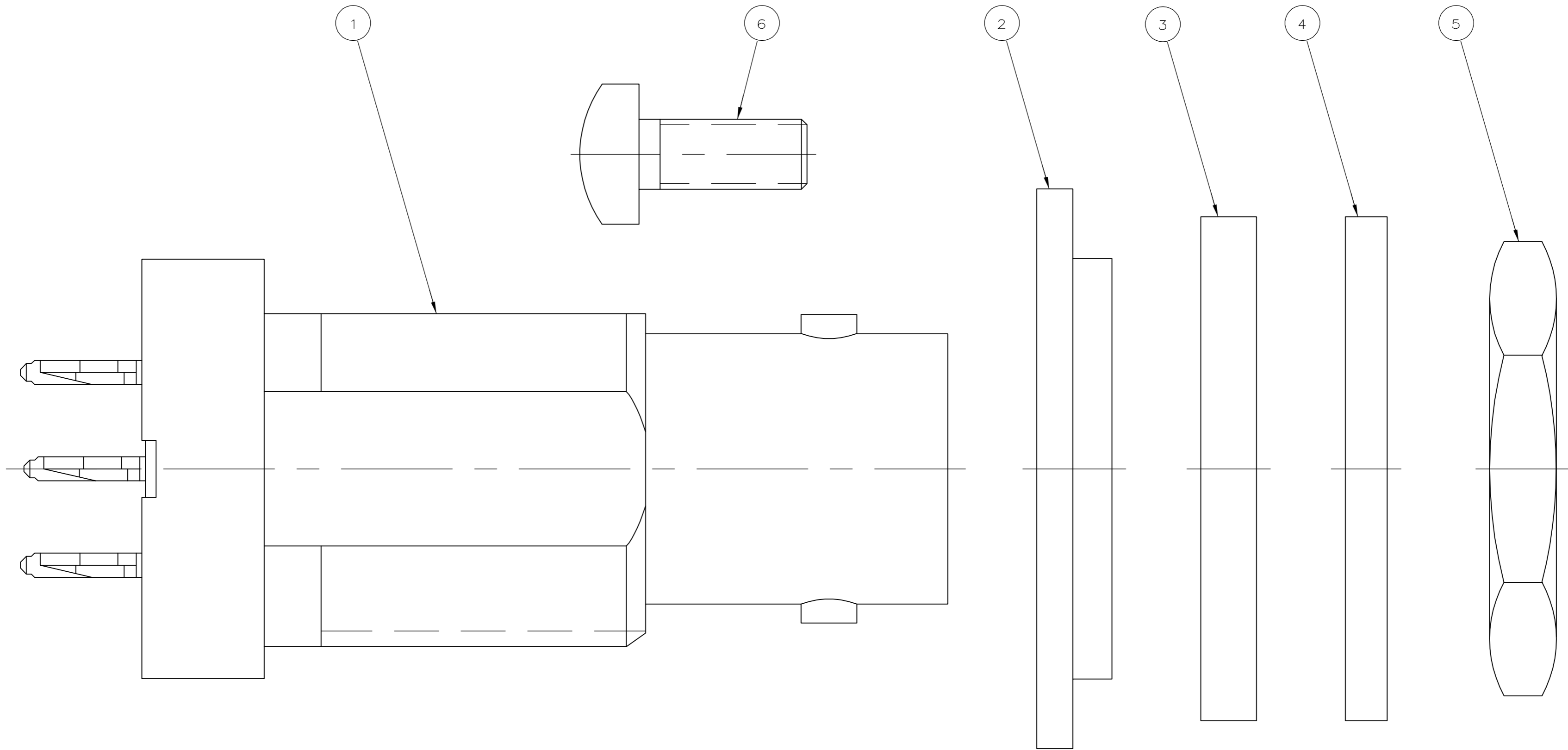
Email & Skype: info@chipsmall.com Web: www.chipsmall.com

Address: A1208, Overseas Decoration Building, #122 Zhenhua RD., Futian, Shenzhen, China



THIS DRAWING IS UNPUBLISHED. RELEASED FOR PUBLICATION  
 © COPYRIGHT BY TYCO ELECTRONICS CORPORATION. ALL RIGHTS RESERVED.

LOC	DIST	REVISIONS			
P	LTR	DESCRIPTION	DATE	DWN	APVD
AJ	16	B1	REVISED PER ECO-06-016534	11JUL2006	KS JL



5019807-3	1-329631-2	414993-1	414986-1	415459-1	415457-2	415456-1
⑥ SCREW QTY=2	⑤ JAM NUT QTY=1	④ WASHER QTY=1	③ WASHER, FLAT QTY=1	② WASHER, STEPPED QTY=1	① JACK ASSEMBLY, ACTION PIN QTY=1	PART NUMBER

THIS DRAWING IS A CONTROLLED DOCUMENT.

DWN	07JUN96	MICHAEL E. COWHER
CHK	07JUN96	MICHAEL J. TOMCHAK
APVD	07JUN96	MICHAEL J. TOMCHAK
PRODUCT SPEC		
APPLICATION SPEC		
WEIGHT	-	
CUSTOMER DRAWING		

**tyco** Electronics  
 Tyco Electronics Corporation  
 Harrisburg, PA 17105-3608

NAME: JACK, PRESS FIT, 75 OHM, PCB, BNC

SIZE	CAGE CODE	DRAWING NO	RESTRICTED TO
A2	00779	C=415456	-
SCALE	8:1	SHEET	1 of 1
REV	B1		