



Chipsmall Limited consists of a professional team with an average of over 10 year of expertise in the distribution of electronic components. Based in Hongkong, we have already established firm and mutual-benefit business relationships with customers from,Europe,America and south Asia,supplying obsolete and hard-to-find components to meet their specific needs.

With the principle of “Quality Parts,Customers Priority,Honest Operation,and Considerate Service”,our business mainly focus on the distribution of electronic components. Line cards we deal with include Microchip,ALPS,ROHM,Xilinx,Pulse,ON,Everlight and Freescale. Main products comprise IC,Modules,Potentiometer,IC Socket,Relay,Connector.Our parts cover such applications as commercial,industrial, and automotives areas.

We are looking forward to setting up business relationship with you and hope to provide you with the best service and solution. Let us make a better world for our industry!



## Contact us

Tel: +86-755-8981 8866 Fax: +86-755-8427 6832

Email & Skype: info@chipsmall.com Web: www.chipsmall.com

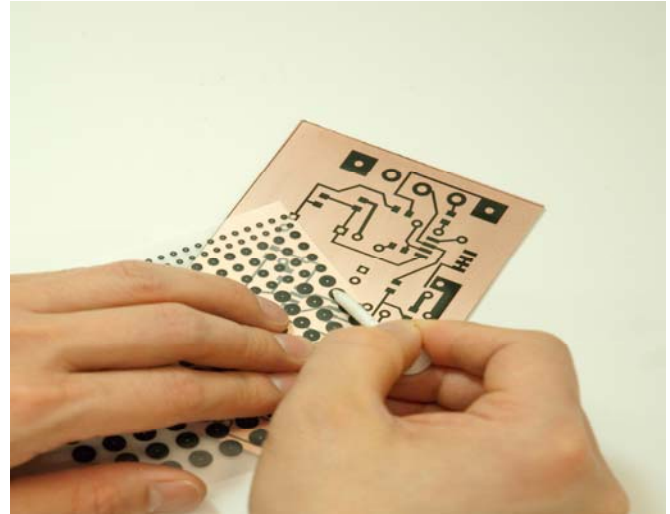
Address: A1208, Overseas Decoration Building, #122 Zhenhua RD., Futian, Shenzhen, China



## Rub-On Etch Resist 416ER

Simply Rub-On and etch!

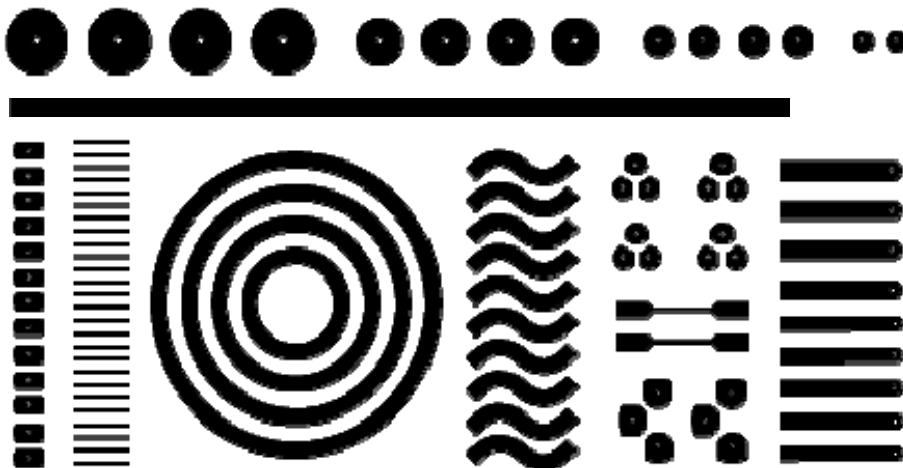
Now you can create your very own circuit with little investment in money and time. Our Rub-On Etch Resist commonly used shapes in circuit board creation. It even comes with a sheet for you to custom cut your own shape. All you need to do is Rub-On the shapes and lines onto a plain copper clad board and you are ready for etching. You will be amazed with the quality of your circuit!



- Perfect finish every time
- Sharp edges
- No printing or exposure required

For small production runs and creation of boards with plated through holes, please our website at [www.mgchemicals.com](http://www.mgchemicals.com)

### Shapes included in package:



### Available Sizes

Catalog Number	Sizes Available	Description
416ER	8 Sheets	10 cm x 15 cm sheets